

Appendix

ADAM17 selectively activates the IL-6 trans-signaling/ERK MAPK axis in KRAS-addicted lung cancer

Mohamed I. Saad, Sultan Alhayyani, Louise McLeod, Liang Yu, Mohammad Alanazi, Virginie Deswaerte, Ke Tang, Thierry Jarde, Julian A. Smith, Zdenka Prodanovic, Michelle D. Tate, Jesse J. Balic, D. Neil Watkins, Jason E. Cain, Steven Bozinovski, Elizabeth Algar, Tomohiro Kohmoto, Hiromichi Ebi, Walter Ferlin, Christoph Garbers, Saleela Ruwanpura, Irit Sagi, Stefan Rose-John, Brendan J. Jenkins

Table of contents

Appendix Figure S1. Genetic reduction of ADAM17 expression suppresses the 12-week-old LAC phenotype of *Kras*^{G12D} mice.

Appendix Figure S2. Unaltered expression status of ADAM17 and its regulators in the lungs of *Kras*^{G12D} mice.

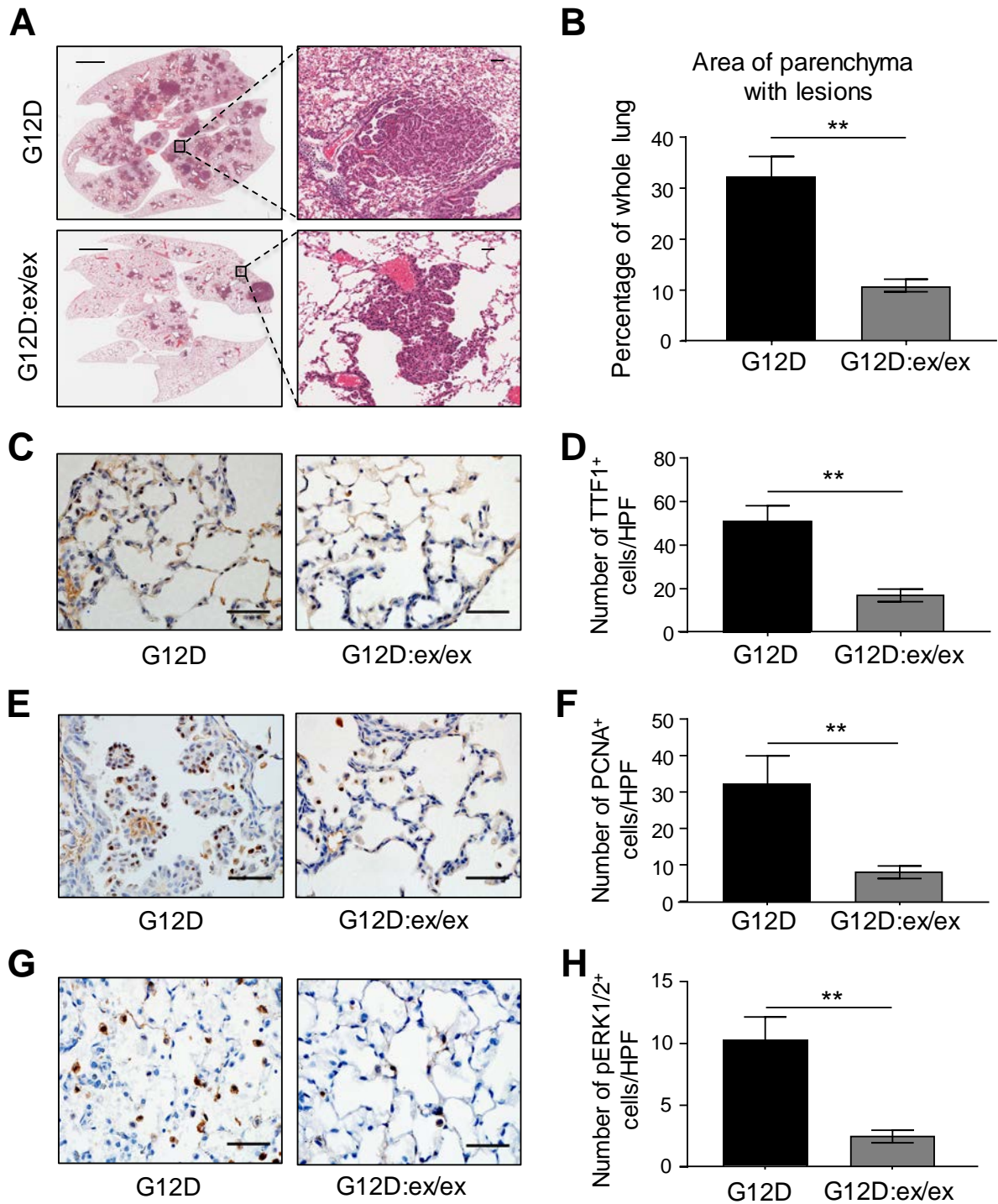
Appendix Figure S3. Reduced proliferation, but not apoptosis or angiogenesis, is associated with suppressed tumorigenesis in an A17 pro-treated *KRAS* mutant LAC PDX.

Appendix Table S1. Clinicopathological features of patients used for immunohistochemical staining of pADAM17 and pERK1/2.

Appendix Table S2. Antibody dilutions used for immunoblotting, immunofluorescence and immunohistochemistry.

Appendix Table S3. Primer sequences used for qPCR.

Appendix Table S4. *P* values for differences between experimental groups in figures.



Appendix Figure S1. Genetic reduction of ADAM17 expression suppresses the 12-week-old LAC phenotype of *Kras*^{G12D} mice.

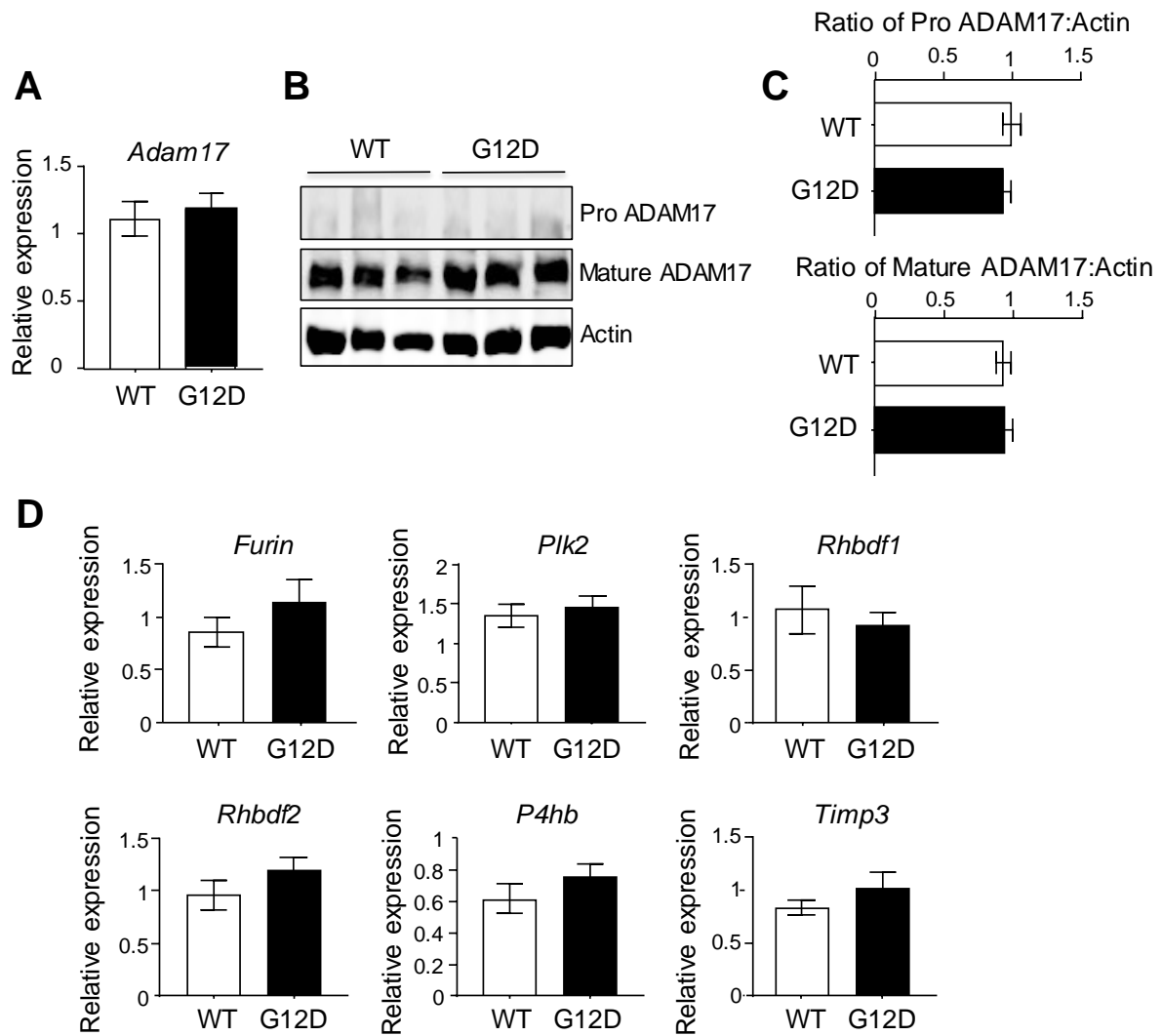
A Representative low power (left) and high power (right) photomicrographs of H&E-stained lung cross-sections from *Kras*^{G12D} and *Kras*^{G12D}:*Adam17*^{ex/ex} mice at 12 weeks following Ad-Cre inhalation. Scale bars, 3mm (left) and 300μm (right).

B Quantification of lung parenchyma area occupied by tumor lesions in the indicated genotypes from (A). Data are presented as the mean \pm SEM (n = 6). ** $P < 0.01$, Student's *t*-test.

C, E, G Representative high power photomicrographs of lung cross-sections from *Kras*^{G12D} and *Kras*^{G12D}:*Adam17*^{ex/ex} mice at 12 weeks following Ad-Cre inhalation that were stained with antibodies against TTF-1 (C), PCNA (E) and pERK1/2 MAPK (G). Scale bars, 100 μ m.

D, F, H Quantification of positive cells per high power field (HPF) stained for TTF-1 (D), PCNA (F) and pERK1/2 MAPK (H) in lungs of the indicated genotypes from (C), (E) and (G), respectively, at 12 weeks post Ad-Cre inhalation. Data are presented as the mean \pm SEM (n = 5). ** $P < 0.01$, Student's *t*-test.

Exact *P* values are specified in Appendix Table S4.



Appendix Figure S2. Unaltered expression status of ADAM17 and its regulators in the lungs of *Kras*^{G12D} mice.

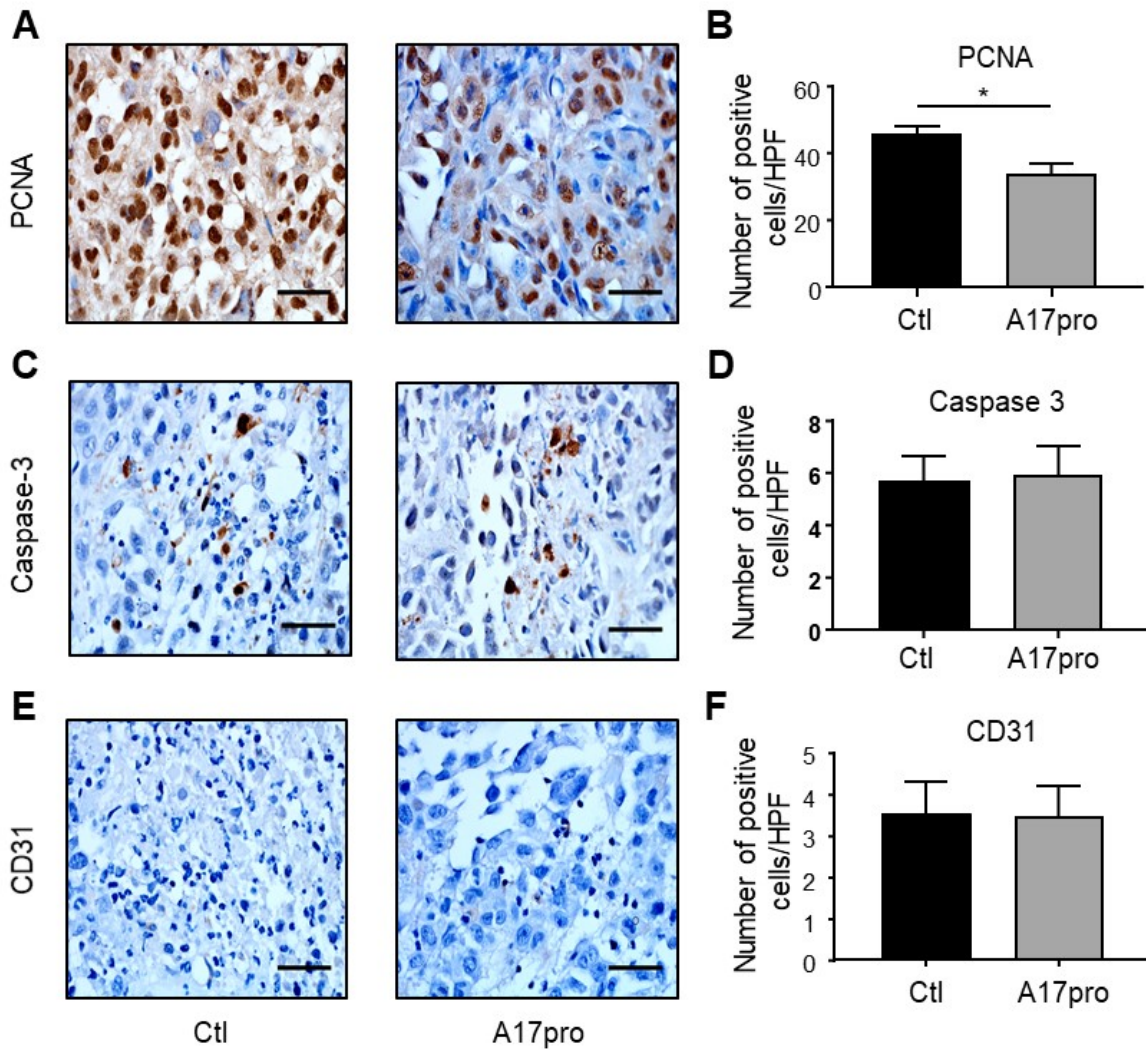
A qPCR gene expression analysis of *Adam17* on lung cDNA from *Kras*^{WT} and *Kras*^{G12D} mice at 6 weeks post inhalations. Expression data are normalized against *18S rRNA*. Data are presented as the mean ± SEM (n = 6 per genotype).

B Immunoblots of representative *Kras*^{WT} and *Kras*^{G12D} lung lysates with antibodies against ADAM17 (detecting pro and mature forms) and Actin. Note that for the Actin blot, lanes 4-6 are reproduced in lanes 1-3 of the Actin blot in Fig 4L.

C Densitometric semi-quantitative analysis of pro and mature ADAM17 protein levels in lung lysates from the mice indicated in (B). Relative expression was determined against Actin. Data are presented as the mean \pm SEM (n = 6 per genotype).

D qPCR expression analysis of the indicated genes in lungs of *Kras*^{WT} and *Kras*^{G12D} mice at 6 weeks post inhalations. Expression data are normalized against *18S rRNA*. Data are presented as the mean \pm SEM (n = 6 per genotype).

Exact *P* values are specified in Appendix Table S4.



Appendix Figure S3. Reduced proliferation, but not apoptosis or angiogenesis, is associated with suppressed tumorigenesis in an A17 pro-treated *KRAS* mutant LAC PDX.

A, C, E Representative high power photomicrographs of lung cross-sections from a *KRAS* mutant PDX treated with vehicle control (Ctl) or A17pro (1mg/kg) every second day that were stained with antibodies against PCNA (A), cleaved Caspase-3 (C) and CD31 (E). Scale bars, 100µm.

B, D, F Quantification of positive cells per high power field (HPF) stained for PCNA (B), cleaved Caspase-3 (D) and CD31 (F) in the above treated *KRAS* mutant PDX. Data are presented as the mean \pm SEM (n = 5 per genotype). * $P < 0.05$, Student's *t*-test.

Exact *P* values are specified in Appendix Table S4.

Appendix Table S1. Clinicopathological features of patients used for immunohistochemical staining of pADAM17 and pERK1/2.

	LAC	Non-LAC
Mean age		
Years (range)	69.8 (58-87)	62.0 (47-71)
Sex [number (%)]		
Male	10 (55.6)	6 (75)
Female	8 (44.4)	2 (25)
Smoking history [number (%)]		
Never	4 (22.2)	2 (25)
Former	10 (55.6)	6 (75)
Current	2 (11.1)	0 (0)
Unknown	2 (11.1)	0 (0)
Tumor stage¹ [number (%)]		
I	12 (66.7)	NA
II	4 (22.2)	NA
Unknown	2 (11.1)	NA
KRAS status [number (%)]		
Wild-type	13 (72.2)	NA
Mutant	5 (27.8)	NA

¹American Joint Committee on Cancer staging for non-small cell lung cancer based on tumor (T)/node (N)/metastasis (M) classification; Stage I (IA/IB), Stage II (IIA/IIB), Stage III (IIIA/IIIB), Stage IV. NA, not applicable.

Appendix Table S2. Antibody dilutions used for immunoblotting, immunofluorescence and immunohistochemistry.

Immunohistochemistry	
Antibody	Dilution
pThr ⁷³⁵ -ADAM17	1:100
pThr ²⁰² /pTyr ²⁰⁴ -ERK1/2	1:100
pThr ¹⁸⁰ /pTyr ¹⁸² -p38 MAPK	1:100
B220	1:100
CD3	1:100
CD45	1:100
Ly6G	1:100
CD31	1:100
TTF-1	1:100
PCNA	1:5000
Cleaved Caspase-3	1:100
F4/80	1:150
Cleaved Notch1	1:100
Immunofluorescence	
Antibody	Dilution
ADAM17	1:100
CD31	1:100
pThr ⁷³⁵ -ADAM17	1:100
CD45	1:100
CC10	1:100
SP-C	1:100
IL-6R	1:100
TGF α	1:100

Nrg1	1:100
EGF	1:100
Podoplanin	1:100
Alexa Fluor secondary antibodies	1:200

Immunoblotting

Antibody	Dilution
ADAM17	1:500
pThr ⁷³⁵ -ADAM17	1:500
Myc	1:1000
pTyr ⁷⁰⁵ -STAT3	1:1000
pSer ⁷²⁷ -STAT3	1:1000
STAT3	1:1000
pSer ⁴⁷³ -AKT	1:1000
AKT	1:1000
pThr ²⁰² /pTyr ²⁰⁴ -ERK1/2	1:1000
ERK1/2	1:1000
pThr ¹⁸⁰ /pTyr ¹⁸² -p38 MAPK	1:1000
p38 MAPK	1:1000
pTyr ¹⁰⁶⁸ -EGFR	1:1000
EGFR	1:1000
pSer ⁸² -HSP27	1:1000
Cleaved Notch1	1:500
IL-6R	1:500
Nrg1	1:1000
pTyr ¹²⁸⁹ -ErbB3	1:1000
ErbB3	1:1000
TGF α	1:500

Actin

1:500

Appendix Table S3. Primer sequences used for qPCR.

Gene	Forward	Reverse
<i>Ccnd1</i>	AGTGCGTGCAGAAGGAGATT	AGGAAGCGGTCCAGGTAGTT
<i>Ccnb1</i>	TAGGGTGTCTTCTCGAATCGGGG	ACGCTTGGCGCCTGCCATA
<i>Cdc42</i>	GAAAATGTGAAAGAAAAGTGG	TCTGGAGTAATAGGCTTCTGT
<i>Myc</i>	CGGACACACAACGTCTTGGA	AGGATGTAGGCGGTGGCTTTT
<i>Il1b</i>	CAACCAACAAGTGATATTCTCCATG	GATCCACACTCTCCAGCTGCA
<i>Il7a</i>	ACCGCAATGAAGACCCTGAT	TCCCTCCGCATTGACACA
<i>Il6</i>	ATGGATGCTACCAAAGTGGAT	TGAAGGACTCTGGCTTTGTCT
<i>Cxcl2</i>	AACATCCAGAGCTTGAGTGTGA	TTCAGGGTCAAGGCAAAGT
<i>Vegf</i>	GCACACAGGACGGCTTGAAGA	CCCACGACAGAAGAGCAGA
<i>Mmp2</i>	GCTCTATGGGCCCTCCCCCG	CGTGGTGTCACTGTCCGCCA
<i>Il6r</i>	AAGCAGCAGGCAATGTTACC	CATAAATAGTCCCCAGTGTCTG
<i>Hes1</i>	ACCTTCCAGTGGCTCCTC	TTTAGTGTCCGTCAGAAGAGAG
<i>Hey1</i>	GCCGAAGTTGCCCGTTATCTG	TGTGTGGGTGATGTCCGAAGG
<i>Furin</i>	GGCTCTAAGAAAGGGGGTTG	TGCAAAAGGCACATCAGAAG
<i>Plk2</i>	CGGTGCTGAAATACTTTTCTCAT	TCGGGAGATCACCACCAT
<i>Rhbdf1</i>	AGCTATGTCAAGCGGCAGAT	TTCCGAAGTACCGAGTCCAC
<i>Rhbdf2</i>	TGCCTGACGATGTCTTTGAG	TAGCTTCGGTTGAGCCAGTT
<i>P4hb</i>	TGACCTGGCTCAGCAGTATG	AAACCGATGACCGTCACTTC
<i>Timp3</i>	TCCTAGACCCAGTTCCATATACACTTC	TTGGACTTCTGCCAACTTCCTT

Appendix Table S4. *P* values for differences between experimental groups in figures.

Figure 1B				
Student's <i>t</i>-test		Significant?	Summary	<i>P</i> value
G12D	G12D:ex/+	Yes	*	0.0347
G12D	G12D:ex/ex	Yes	***	0.0001
G12D:ex/+	G12D:ex/ex	Yes	***	0.0001
Figure 1C				
Student's <i>t</i>-test		Significant?	Summary	<i>P</i> value
G12D	G12D:ex/+	No	ns	0.1236
G12D	G12D:ex/ex	Yes	***	0.0001
G12D:ex/+	G12D:ex/ex	Yes	*	0.0260
Figure 1E				
Student's <i>t</i>-test		Significant?	Summary	<i>P</i> value
WT	G12D	Yes	**	0.0022
WT	G12D:ex/+	Yes	**	0.0022
WT	G12D:ex/ex	No	ns	0.3939
G12D	G12D:ex/+	Yes	**	0.0043
G12D	G12D:ex/ex	Yes	**	0.0022
G12D:ex/+	G12D:ex/ex	Yes	*	0.0152
Figure 2B				
Student's <i>t</i>-test		Significant?	Summary	<i>P</i> value
WT	G12D	Yes	**	0.0022
WT	G12D:ex/ex	No	ns	0.2403
G12D	G12D:ex/ex	Yes	**	0.0022
Figure 2C				
Student's <i>t</i>-test		Significant?	Summary	<i>P</i> value
<i>Ccnd1</i>				
WT	G12D	Yes	*	0.0181
WT	G12D:ex/ex	No	ns	0.3374
G12D	G12D:ex/ex	Yes	*	0.0428
<i>Ccnb1</i>				
WT	G12D	Yes	*	0.0110
WT	G12D:ex/ex	No	ns	0.0635
G12D	G12D:ex/ex	Yes	**	0.0034
<i>Cdc42</i>				
WT	G12D	Yes	*	0.0124
WT	G12D:ex/ex	No	ns	0.4533
G12D	G12D:ex/ex	Yes	*	0.0462
<i>Myc</i>				
WT	G12D	Yes	*	0.0181
WT	G12D:ex/ex	No	ns	0.4026
G12D	G12D:ex/ex	Yes	*	0.0290
Figure 2E				
Student's <i>t</i>-test		Significant?	Summary	<i>P</i> value
G12D	G12D:ex/ex	Yes	**	0.0079
Figure 2G				
Student's <i>t</i>-test		Significant?	Summary	<i>P</i> value
WT	G12D	Yes	**	0.0022
WT	G12D:ex/ex	Yes	**	0.0022
G12D	G12D:ex/ex	Yes	**	0.0022
Figure 3H				
Student's <i>t</i>-test		Significant?	Summary	<i>P</i> value
Kras ^{Kras}	Kras ^{Kras:ex/ex}	No	ns	0.8502

Figure 4B				
Student's <i>t</i>-test		Significant?	Summary	<i>P</i> value
WT	G12D	Yes	**	0.0079
Figure 4D				
Student's <i>t</i>-test		Significant?	Summary	<i>P</i> value
WT	G12D	Yes	*	0.0317
Figure 4F				
Student's <i>t</i>-test		Significant?	Summary	<i>P</i> value
WT	G12D	Yes	**	0.0079
WT	G12D	No	ns	0.8413
Figure 4H				
Student's <i>t</i>-test		Significant?	Summary	<i>P</i> value
Ctl	SB	Yes	**	0.0079
Ctl	U0	No	ns	>0.9999
SB	U0	Yes	*	0.0317
Figure 4J				
Student's <i>t</i>-test		Significant?	Summary	<i>P</i> value
Ctl	SB	Yes	**	0.0079
Ctl	SB	Yes	*	0.0317
Figure 4K				
Student's <i>t</i>-test		Significant?	Summary	<i>P</i> value
Ctl	SB	Yes	**	0.0012
Ctl	SB	Yes	**	0.0095
Figure 4N				
Student's <i>t</i>-test		Significant?	Summary	<i>P</i> value
G12D	G12D:ex/ex	Yes	**	0.0079
Figure 5A				
Student's <i>t</i>-test		Significant?	Summary	<i>P</i> value
sIL-6R				
WT	G12D	Yes	*	0.0334
WT	G12D:ex/ex	No	ns	0.3577
G12D	G12D:ex/ex	Yes	**	0.0016
TNFα				
WT	G12D	No	ns	0.8481
WT	G12D:ex/ex	No	ns	0.4436
G12D	G12D:ex/ex	No	ns	0.4931
Figure 5E				
Student's <i>t</i>-test		Significant?	Summary	<i>P</i> value
Ctl	1F7	Yes	*	0.0357
Ctl	25F10	No	ns	0.1429
1F7	25F10	No	ns	0.1000
Figure 6B				
Student's <i>t</i>-test		Significant?	Summary	<i>P</i> value
Norm	LAC	Yes	*	0.0228
Figure 6C				
Student's <i>t</i>-test		Significant?	Summary	<i>P</i> value
WT	MUT	Yes	*	0.0228
WT	MUT	Yes	**	0.0056
Figure 6H				
Student's <i>t</i>-test		Significant?	Summary	<i>P</i> value
HBEC	A549	Yes	**	0.0012
HBEC	H23	Yes	**	0.0043
HBEC	H2228	Yes	**	0.0012
A549	H23	No	ns	0.1490

A549	H2228	Yes	**	0.0012
H23	H2228	Yes	**	0.0025
Figure 6I				
Student's <i>t</i>-test		Significant?	Summary	<i>P</i> value
Ctl	KO	Yes	**	0.0043
Figure 6J				
Student's <i>t</i>-test		Significant?	Summary	<i>P</i> value
Ctl	KO	Yes	*	0.0286
Figure 6K				
Student's <i>t</i>-test		Significant?	Summary	<i>P</i> value
Ctl	KO	Yes	***	0.0006
Figure 6L				
Multiple Student's <i>t</i>-test		Significant?	Summary	<i>P</i> value
(0) Ctl	KO	No	ns	0.2838
(3) Ctl	KO	No	ns	0.3088
(6) Ctl	KO	Yes	*	0.0475
(9) Ctl	KO	Yes	*	0.0246
(12) Ctl	KO	Yes	*	0.0320
(15) Ctl	KO	Yes	*	0.0445
(18) Ctl	KO	Yes	*	0.0180
(21) Ctl	KO	Yes	*	0.0256
Figure 6M				
Student's <i>t</i>-test		Significant?	Summary	<i>P</i> value
Ctl	KO	Yes	**	0.0079
Figure 7B				
Student's <i>t</i>-test		Significant?	Summary	<i>P</i> value
Ctl	A17pro	Yes	**	0.0057
Figure 7D				
Student's <i>t</i>-test		Significant?	Summary	<i>P</i> value
Ctl	A17pro	Yes	**	0.0072
Figure 7F				
Student's <i>t</i>-test		Significant?	Summary	<i>P</i> value
Ctl	A17pro	Yes	**	0.0022
Figure 7H				
Student's <i>t</i>-test		Significant?	Summary	<i>P</i> value
Ctl	A17pro	Yes	*	0.0481
Figure 7I				
Student's <i>t</i>-test		Significant?	Summary	<i>P</i> value
Ctl	A17pro	Yes	*	0.0411
Figure 7J				
Multiple Student's <i>t</i>-test		Significant?	Summary	<i>P</i> value
(0) Ctl	A17pro	No	ns	0.6895
(2) Ctl	A17pro	No	ns	0.2255
(4) Ctl	A17pro	No	ns	0.4237
(6) Ctl	A17pro	Yes	*	0.0065
(8) Ctl	A17pro	Yes	*	0.0017
(10) Ctl	A17pro	Yes	*	0.0069
(12) Ctl	A17pro	Yes	*	0.0065
(14) Ctl	A17pro	Yes	*	0.0062
Figure 7K				
Student's <i>t</i>-test		Significant?	Summary	<i>P</i> value
Ctl	A17pro	Yes	*	0.0411
Figure 7M				
Student's <i>t</i>-test		Significant?	Summary	<i>P</i> value

Ctl	A17pro	Yes	*	0.0240
Figure EV1A				
Student's <i>t</i>-test		Significant?	Summary	<i>P</i> value
G12D	G12D:ex/ex	Yes	**	0.0022
Figure EV1C				
Student's <i>t</i>-test		Significant?	Summary	<i>P</i> value
G12D	G12D:ex/ex	Yes	*	0.0152
Figure EV1D				
Student's <i>t</i>-test		Significant?	Summary	<i>P</i> value
G12D	G12D:ex/ex	Yes	**	0.0043
Figure EV1E				
Student's <i>t</i>-test		Significant?	Summary	<i>P</i> value
G12D	G12D:ex/ex	Yes	*	0.0433
Figure EV1F				
Student's <i>t</i>-test		Significant?	Summary	<i>P</i> value
G12D	G12D:ex/ex	Yes	*	0.0455
Figure EV2B				
Student's <i>t</i>-test		Significant?	Summary	<i>P</i> value
WT	G12D	Yes	**	0.0022
WT	G12D:ex/ex	Yes	**	0.0043
G12D	G12D:ex/ex	Yes	*	0.0411
Figure EV2D				
Student's <i>t</i>-test		Significant?	Summary	<i>P</i> value
WT	G12D	Yes	**	0.0022
WT	G12D:ex/ex	Yes	*	0.0411
G12D	G12D:ex/ex	No	ns	0.0931
Figure EV2F				
Student's <i>t</i>-test		Significant?	Summary	<i>P</i> value
WT	G12D	Yes	*	0.0260
WT	G12D:ex/ex	No	ns	0.5887
G12D	G12D:ex/ex	Yes	*	0.0152
Figure EV2H				
Student's <i>t</i>-test		Significant?	Summary	<i>P</i> value
WT	G12D	No	ns	0.1667
WT	G12D:ex/ex	No	ns	0.9069
G12D	G12D:ex/ex	No	ns	0.2900
Figure EV2I				
<i>Il1b</i>				
Student's <i>t</i>-test		Significant?	Summary	<i>P</i> value
G12D	G12D:ex/ex	Yes	**	0.0032
<i>Il17a</i>				
Student's <i>t</i>-test		Significant?	Summary	<i>P</i> value
G12D	G12D:ex/ex	Yes	*	0.0353
<i>Il6</i>				
Student's <i>t</i>-test		Significant?	Summary	<i>P</i> value
G12D	G12D:ex/ex	Yes	*	0.0489
Figure EV2K				
Student's <i>t</i>-test		Significant?	Summary	<i>P</i> value
G12D	G12D:ex/ex	No	ns	0.3651
Figure EV2M				
Student's <i>t</i>-test		Significant?	Summary	<i>P</i> value
G12D	G12D:ex/ex	No	ns	0.1688
Figure EV2N				
<i>Cxcl2</i>				

Student's <i>t</i> -test		Significant?	Summary	<i>P</i> value
G12D	G12D:ex/ex	No	ns	0.1775
<i>Vegf</i>				
Student's <i>t</i> -test		Significant?	Summary	<i>P</i> value
G12D	G12D:ex/ex	No	ns	0.5887
<i>Mmp2</i>				
Student's <i>t</i> -test		Significant?	Summary	<i>P</i> value
G12D	G12D:ex/ex	No	ns	0.6623
Figure EV3C				
Student's <i>t</i> -test		Significant?	Summary	<i>P</i> value
G12D	G12D:ex/ex	No	ns	0.0649
Figure EV3D				
<i>Hes1</i>				
Student's <i>t</i> -test		Significant?	Summary	<i>P</i> value
G12D	G12D:ex/ex	No	ns	0.1797
<i>Hey1</i>				
Student's <i>t</i> -test		Significant?	Summary	<i>P</i> value
G12D	G12D:ex/ex	No	ns	0.3095
Figure EV5A				
Student's <i>t</i> -test		Significant?	Summary	<i>P</i> value
Ctl	KO	Yes	**	0.0012
Figure EV5B				
Student's <i>t</i> -test		Significant?	Summary	<i>P</i> value
Ctl	KO	Yes	**	0.0043
Figure EV5C				
Student's <i>t</i> -test		Significant?	Summary	<i>P</i> value
Ctl	KO	Yes	**	0.0022
Figure EV5D				
Student's <i>t</i> -test		Significant?	Summary	<i>P</i> value
Ctl	A17pro	Yes	**	0.0022
Ctl	A17pro	Yes	***	0.0003
Figure EV5E				
Student's <i>t</i> -test		Significant?	Summary	<i>P</i> value
Ctl	A17pro	Yes	*	0.0254
Ctl	A17pro	Yes	***	0.0007
Figure EV5F				
Student's <i>t</i> -test		Significant?	Summary	<i>P</i> value
Ctl	A17pro	Yes	*	0.0424
Ctl	A17pro	Yes	**	0.0022
Figure EV5H				
Student's <i>t</i> -test		Significant?	Summary	<i>P</i> value
Ctl	KO	Yes	*	0.0286
Ctl	GW	Yes	*	0.0286
Ctl	A17pro	Yes	*	0.0286
KO	GW	No	ns	0.2739
KO	A17pro	No	ns	0.7490
GW	A17pro	No	ns	0.1402
Figure EV5I				
Student's <i>t</i> -test		Significant?	Summary	<i>P</i> value
Ctl	GW	Yes	*	0.0496
Ctl	GW	Yes	*	0.0295
Figure EV5J				
Student's <i>t</i> -test		Significant?	Summary	<i>P</i> value
Ctl	GW	Yes	*	0.0466

Ctl	GW	Yes	*	0.0357
Figure EV5K				
Student's <i>t</i>-test		Significant?	Summary	<i>P</i> value
Ctl	GW	Yes	**	0.0079
Ctl	GW	Yes	**	0.0079
Figure S1B				
Student's <i>t</i>-test		Significant?	Summary	<i>P</i> value
G12D	G12D:ex/ex	Yes	**	0.0022
Figure S1D				
Student's <i>t</i>-test		Significant?	Summary	<i>P</i> value
G12D	G12D:ex/ex	Yes	**	0.0022
Figure S1F				
Student's <i>t</i>-test		Significant?	Summary	<i>P</i> value
G12D	G12D:ex/ex	Yes	**	0.0079
Figure S1H				
Student's <i>t</i>-test		Significant?	Summary	<i>P</i> value
G12D	G12D:ex/ex	Yes	**	0.0079
Figure S2A				
Student's <i>t</i>-test		Significant?	Summary	<i>P</i> value
WT	G12D	No	ns	0.7221
Figure S2C				
Student's <i>t</i>-test		Significant?	Summary	<i>P</i> value
WT	G12D	No	ns	0.2046
WT	G12D	No	ns	0.9372
Figure S2D				
<i>Furin</i>				
Student's <i>t</i>-test		Significant?	Summary	<i>P</i> value
WT	G12D	No	ns	0.5476
<i>Plk2</i>				
Student's <i>t</i>-test		Significant?	Summary	<i>P</i> value
WT	G12D	No	ns	0.8413
<i>Rhbd1</i>				
Student's <i>t</i>-test		Significant?	Summary	<i>P</i> value
WT	G12D	No	ns	>0.9999
<i>Rhbd2</i>				
Student's <i>t</i>-test		Significant?	Summary	<i>P</i> value
WT	G12D	No	ns	0.4206
<i>P4hb</i>				
Student's <i>t</i>-test		Significant?	Summary	<i>P</i> value
WT	G12D	No	ns	0.2783
<i>Timp3</i>				
Student's <i>t</i>-test		Significant?	Summary	<i>P</i> value
WT	G12D	No	ns	0.3326
Figure S3B				
Student's <i>t</i>-test		Significant?	Summary	<i>P</i> value
Ctl	A17pro	Yes	*	0.0133
Figure S3D				
Student's <i>t</i>-test		Significant?	Summary	<i>P</i> value
Ctl	A17pro	No	ns	0.8468
Figure S3F				
Student's <i>t</i>-test		Significant?	Summary	<i>P</i> value
Ctl	A17pro	No	ns	0.9496