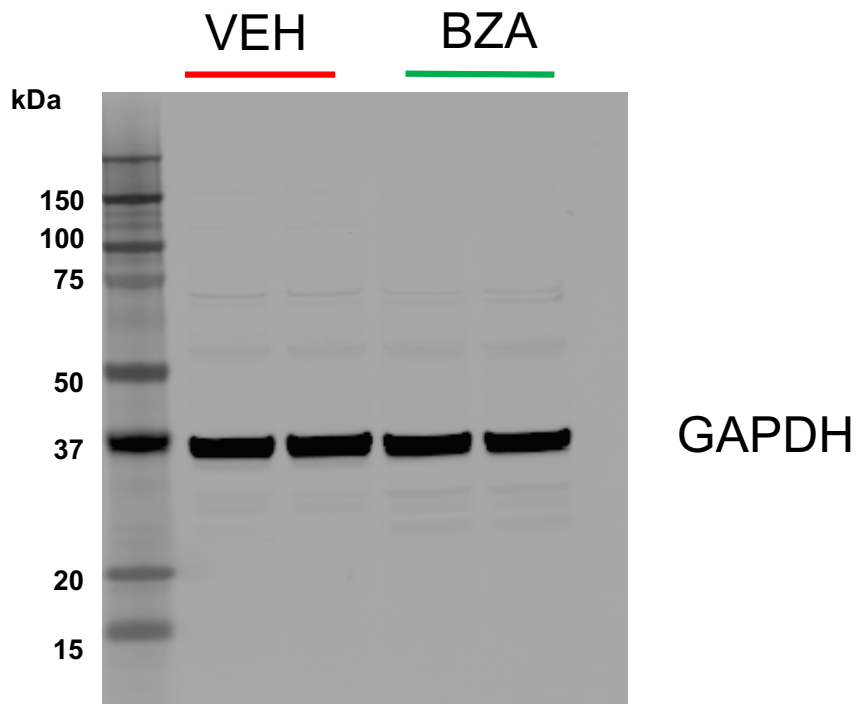
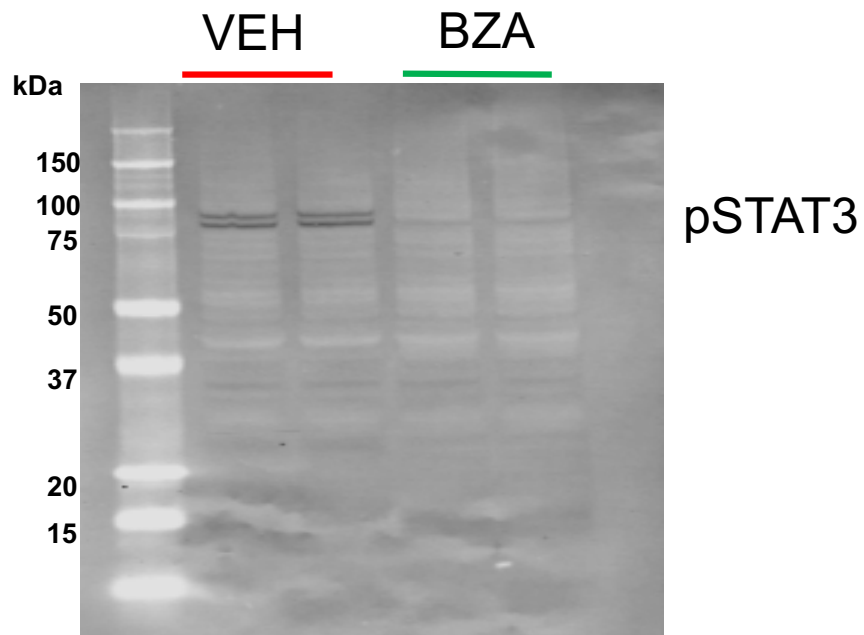


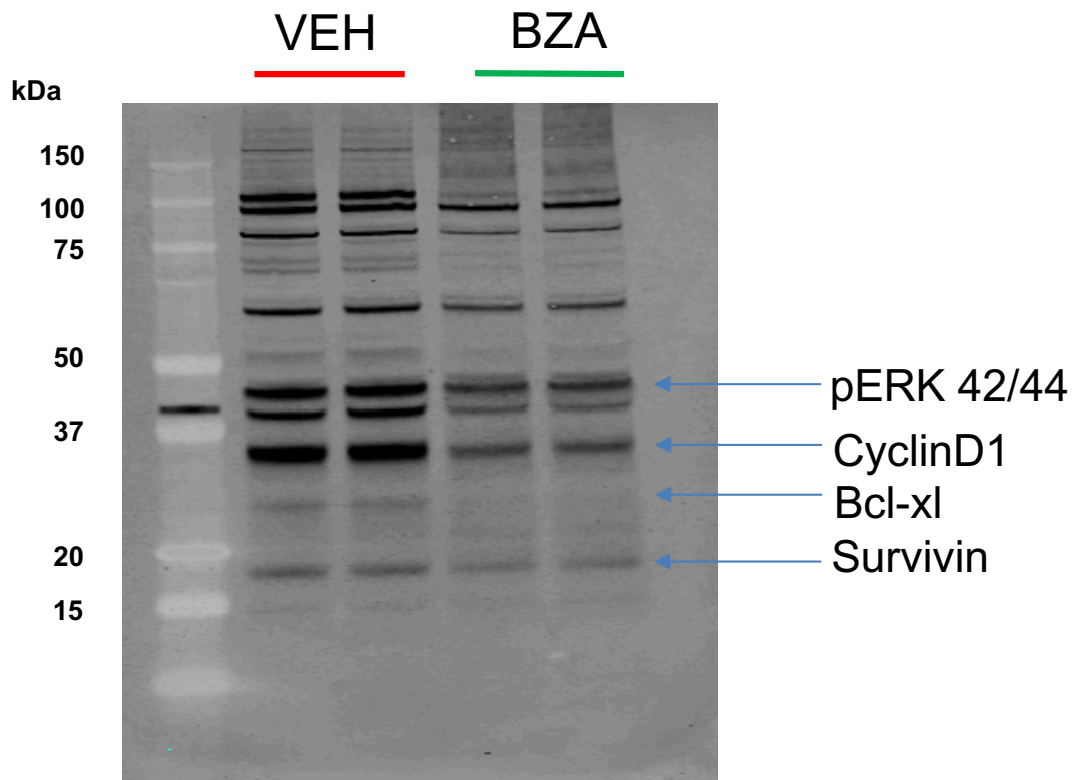
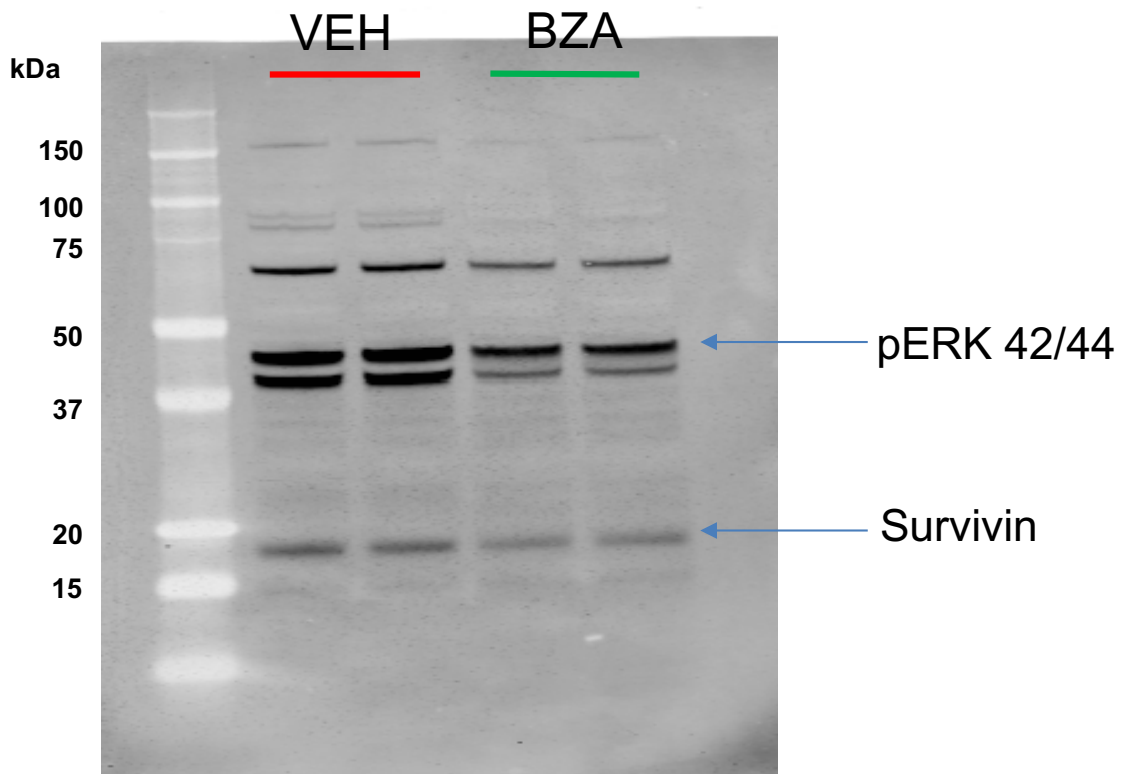
Source Data

**Repurposing the selective estrogen receptor modulator
bazedoxifene to suppress gastrointestinal cancer growth**

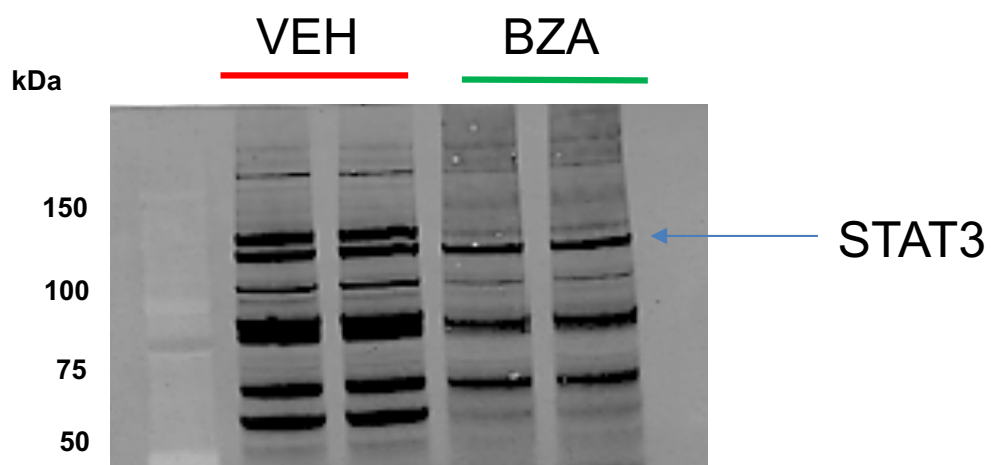
Thilakasiri *et al*



Thilakasiri *et al* **Figure 5G** Western blot images of Cdx2^{CRE}APC^{fllox} tumour lysates



Thilakasiri *et al* **Figure 5G** Western blot images of Cdx2^{CRE}APC^{fl}ox tumour lysates



Thilakasiri *et al* **Figure 5G** Western blot images of Cdx2^{CRE}APC^{fllox} tumour lysates