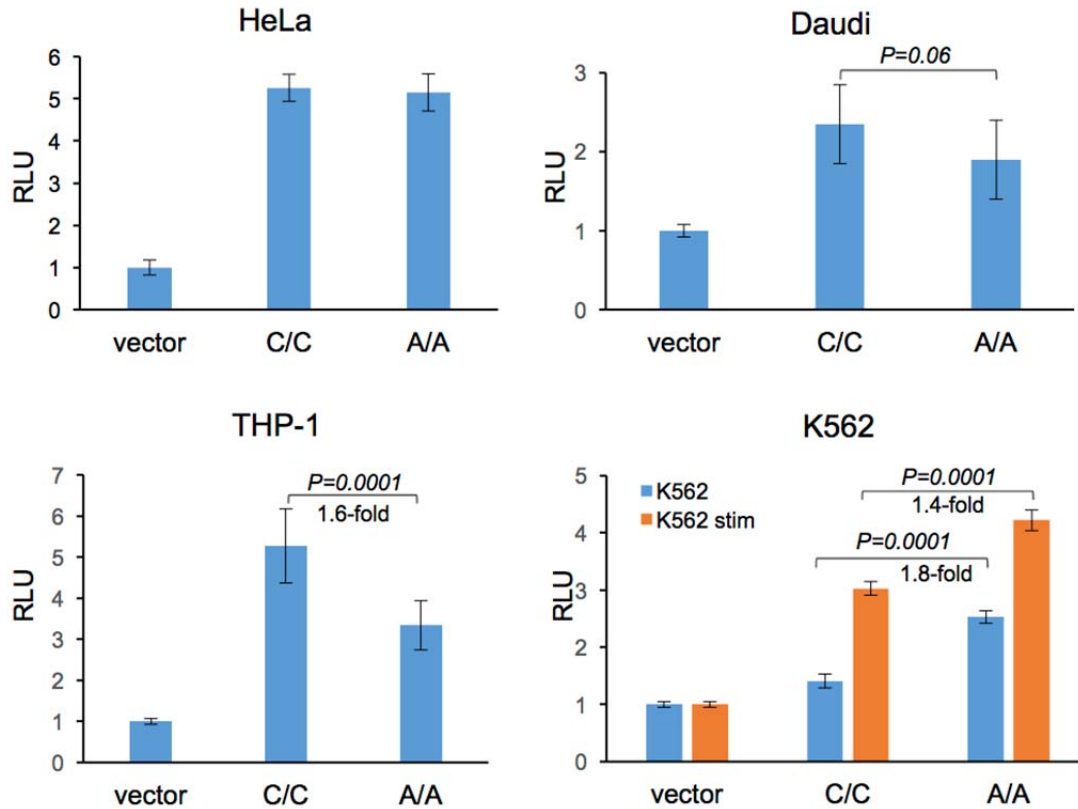
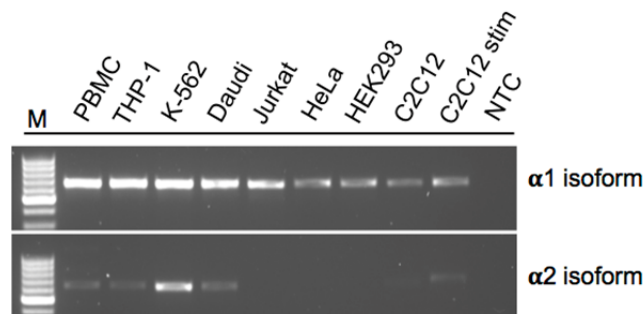


## Supplementary Figures

**Supplementary Figure 1:** The regulatory potential of SNP rs200395694 was assessed by luciferase reporter assay in different cell lines. Bars represent mean values  $\pm$ SD. RLU, relative light units. Statistical analysis was done using an unpaired t test.



**Supplementary Figure 2:** Expression of *MEF2D* isoforms in different cells. M-100 bp DNA ladder, NTC-no template control. C2C12 stimulation was performed for 3 days with 2% horse serum. In case of mouse C2C12, the annealing temperature was lowered from 64°C to 58°C to allow amplification with human-specific primers.



**Supplementary Figure 3:** Expression of *MEF2D* isoforms from minigenes transfected in Jurkat and HEK293 cells. Jurkat cells were stimulated with PMA and ionomycin for 12 hours. Bars represent mean values  $\pm$ SEM. Statistical analysis was done using an unpaired t test.

