

Supplementary Materials for
“Analysis of combined incident and prevalent cohort data
under a proportional mean residual life model”

Chi Hyun Lee, Jing Ning, Richard J. Kryscio, and Yu Shen

Supplementary Figures

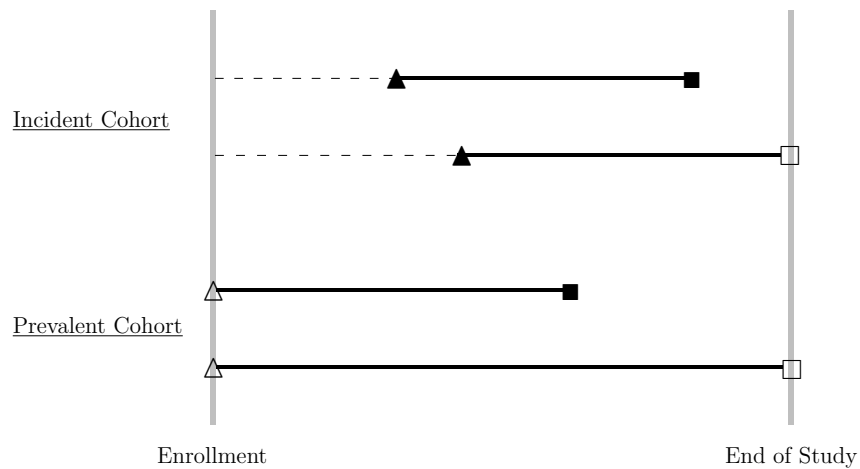


Figure S1: Combined incident and prevalent cohort data from the Nun Study. The observed time of dementia diagnosis (▲), the observed time of death (■), the left-censored time of dementia diagnosis (△), and the right-censored time of death (□).

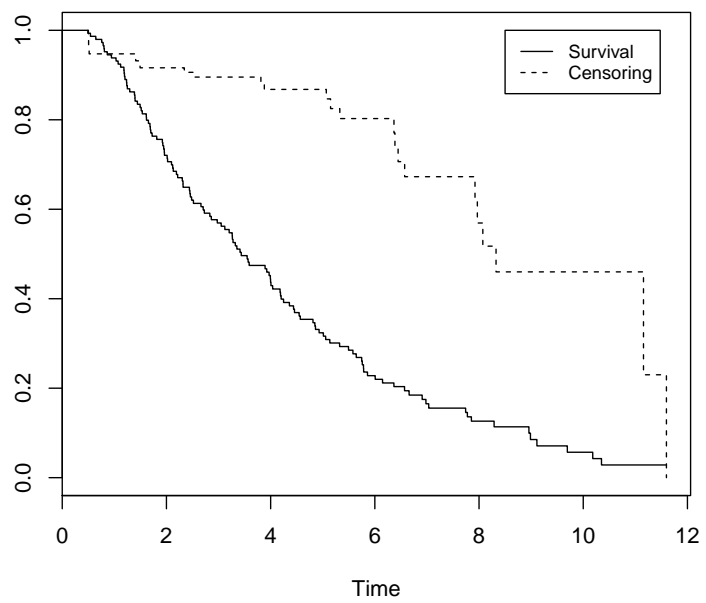


Figure S2: The estimated survival and censoring distributions.