



Cell Line Authentication Report

GENEWIZ, Inc.

C3 Building, 218 Xinghu Road
Suzhou Industrial Park, 215123

Suzhou, China

Tel: 400-8100-669

www.genewiz.com

www.genewiz.com.cn

Cell Line Authentication Report

Customer: Qingxia hu

Institution: Southern University of Science and Technology

Quotation Number: 80-269564405

Completion Date: 3/6/2019

1. Sample ID: LNCaP

2. Original Material: Cell pellets

3. Methods:

- 1). Genomic DNA was extracted from the cell pellets provided by the customer.
- 2). Samples, together with positive and negative control were amplified using GenePrint 10 System (Promega).
- 3). Amplified products were processed using the ABI3730xl Genetic Analyzer.
- 4). Data were analyzed using GeneMapper4.0 software and then compared with the ATCC, DSMZ, JCRB and

RIKEN etc. databases for reference matching.

4. Results:

1) 10 Loci STR Profile:

Genetic Site (Locus)	Customer sample	
	LNCaP	
Amelogenin	X	Y
CSF1PO	10	11
D13S317	10	12
D16S539	11	11
D5S818	11	12
D7S820	9.1	10.3
THO1	9	9
TPOX	8	9
vWA	16	18
D21S11	29	32.2

<<< Search for reference matching with the Cell Bank databases and add the match results.

Result of STR matching analysis by your data.

- DSMZ Profile Database -

A graphical presentation is shown at the bottom of this page.

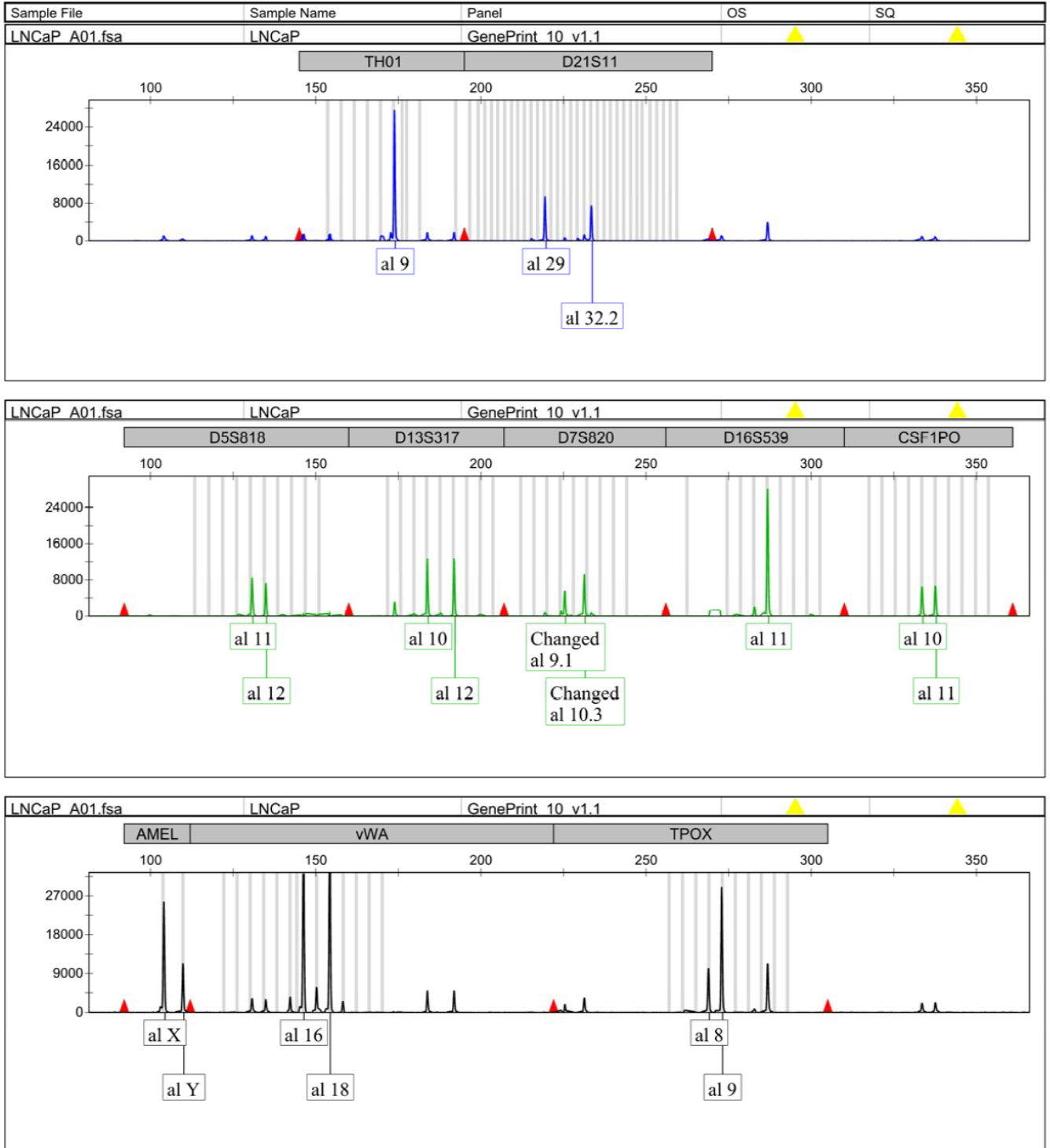
EV	Cell No.	Cell name	Locus names									Figures
			D5S818	D13S317	D7S820	D16S539	VWA	TH01	AM	TPOX	CSF1PO	
		<i>Query (Your Cell)</i>	<i>11,12</i>	<i>10,12</i>	<i>9.1,10.3</i>	<i>11,11</i>	<i>16,18</i>	<i>9,9</i>	<i>X,Y</i>	<i>8,9</i>	<i>10,11</i>	
1.00(36/36)	256	LNCAP	11,12	10,12	9.1,10.3	11,11	16,18	9,9	X,Y	8,9	10,11	-
1.00(36/36)	CRL-1740	LNCaP clone FGC	11,12	10,12	9.1,10.3	11,11	16,18	9,9	X,Y	8,9	10,11	-
0.86(32/37)	RCB2144	LNCap.FGC	11,12	10,12	9,9	11,11	16,17,18	9,9	X,Y	8,9	10,11	-
0.78(28/36)	RCB2266	HE50	11,12	10,12	8,9	11,11	17,17	9,9	X,Y	8,9	10,11	-
0.67(24/36)	CRL-2220	CA-HPV-10	11,12	11,12	10,11	11,11	16,17	6,8	X,Y	8,9	10,11	-
0.67(24/36)	JCRB0041	HLCL-1	11,13	10,12	8,12	11,11	16,17	9,9	X,Y	9,11	11,12	-
0.61(22/36)	237	IGR-37	11,12	12,12	10,11	11,11	17,21	9,9	X,Y	8,11	11,12	-
0.61(22/36)	435	HSB-2	11,12	10,12	11,12	9,12	18,19	9,10	X,Y	8,8	10,11	-
0.61(22/36)	676	NGP	11,12	8,12	11,11	8,11	16,21	9,9	X,Y	6,9	11,12	-
0.61(22/36)	714	KASUMI-3	12,12	11,12	10,11	11,11	16,18	6,9	X,Y	8,8	11,11	-
0.61(22/36)	CRL-1110	Sal Mat	11,12	9,12	8,11	11,12	16,18	7,9	X,Y	7,8	7,11	-
0.61(22/36)	CRL-1834	GK-5	10,12	12,12	10,10	11,11	16,19	9,9,3	X,Y	8,8	10,11	-
0.61(22/36)	CRL-7062	Hs 93.T	10,11	11,12	11,13	11,11	14,16	7,9	X,Y	8,9	10,12	-

>>>

2) Electrophoretogram

Applied Biosystems
GeneMapper 4.0

GENEWIZ_2



Note: Raw data in appendix