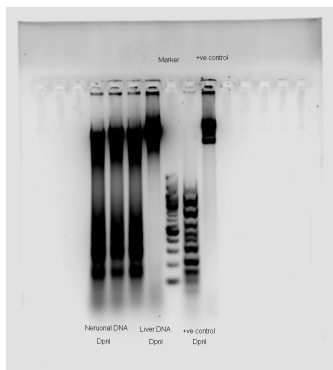
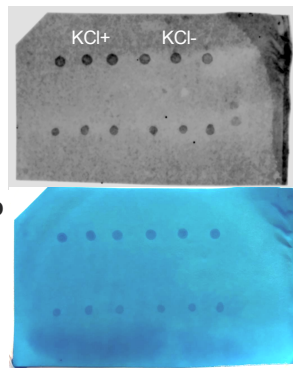


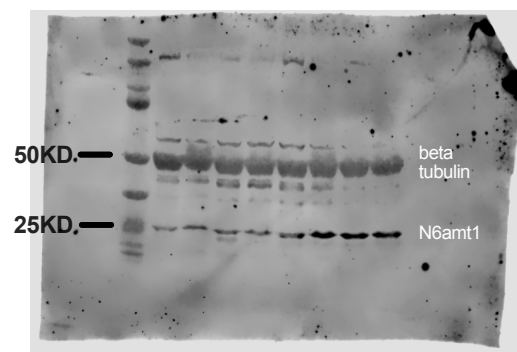
A



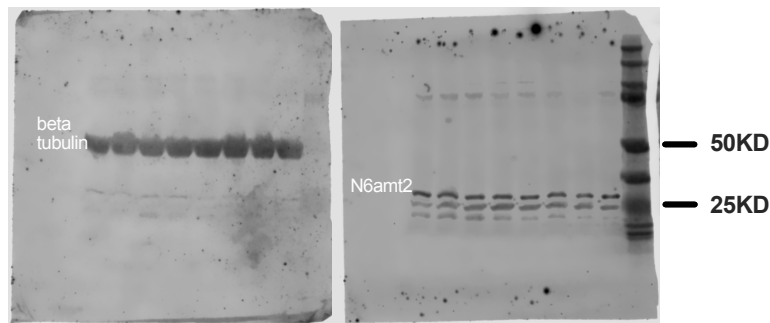
B



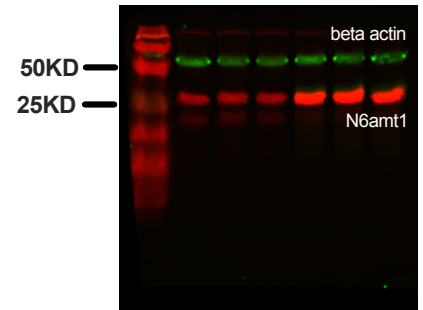
C



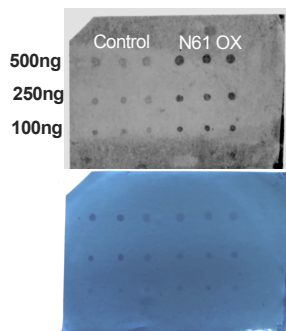
D



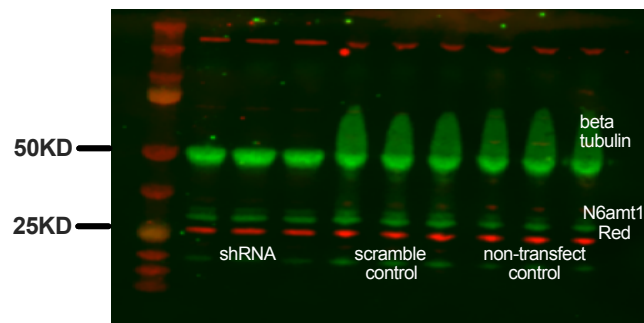
E



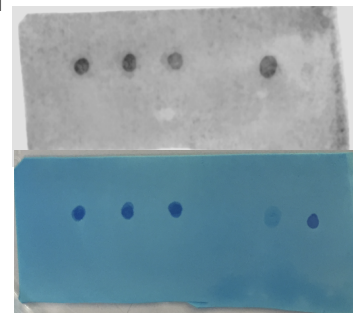
F



G



H



**Suppl. Information. original images for blots and gels.** (A) full gel scan of DpnI treatment. (B) full scan of m6A dot blot under KCl treatment. (C) full scan of N6amt1 western blot under *in vivo* condition. (D) full scan of N6amt1 western blot under *in vivo* condition left: beta tubulin, right: N6amt2. (E) full scan of western blot for N6amt1 overexpression in HEK293t cells. (F) full scan of m6A dot blot under N6amt1 overexpression. (G) full scan of N6amt1 western blot for N6amt1 shRNA KD. (H) full scan of m6A dot blot under N6amt1 shRNA KD.