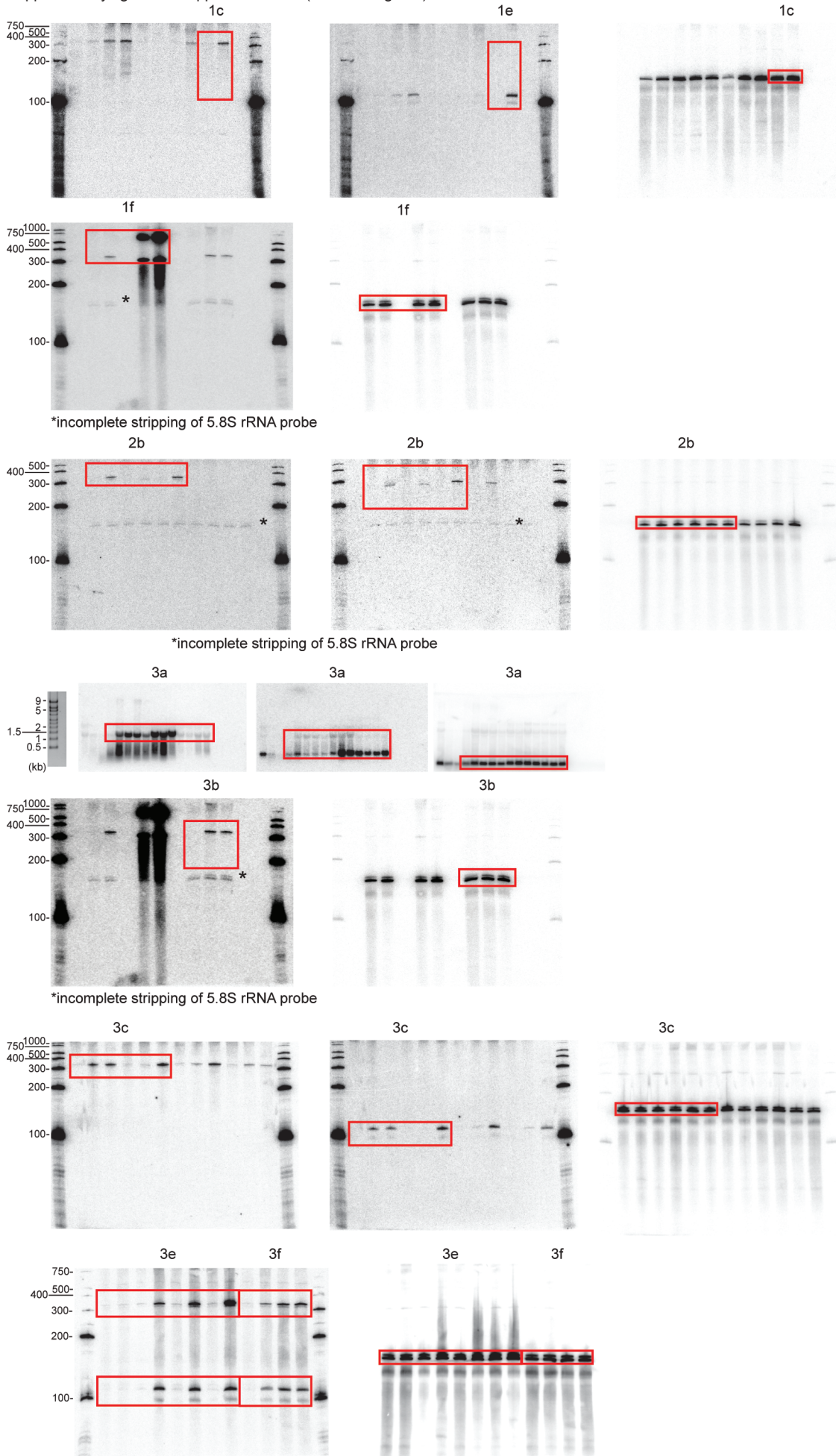
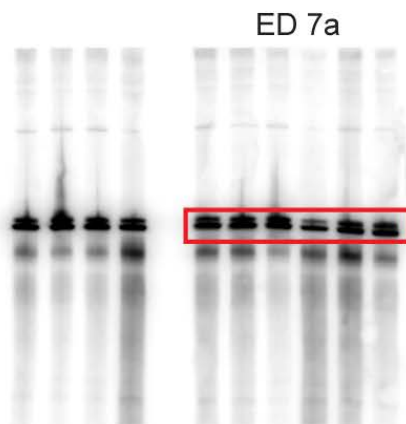
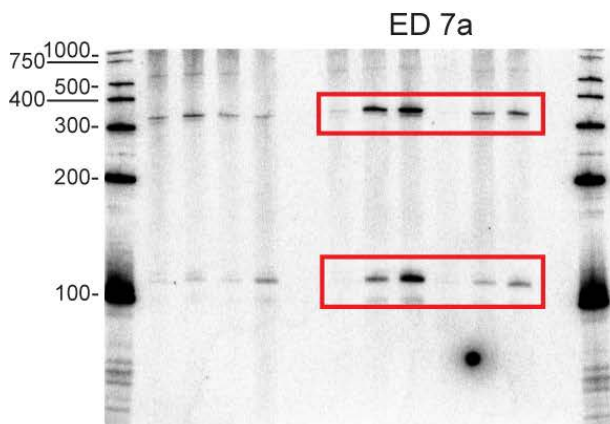
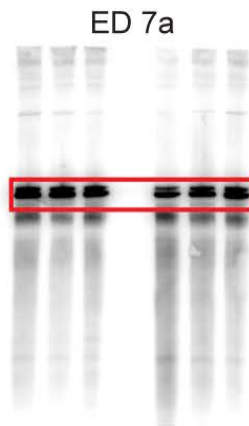
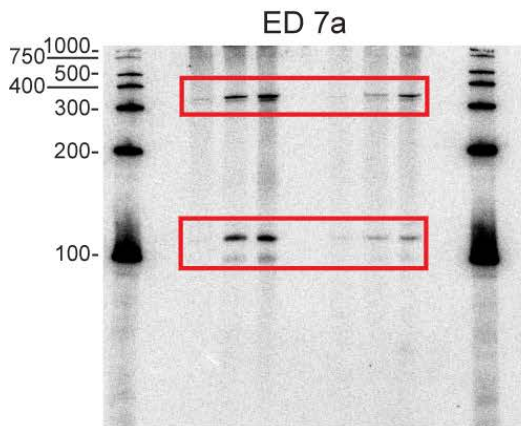
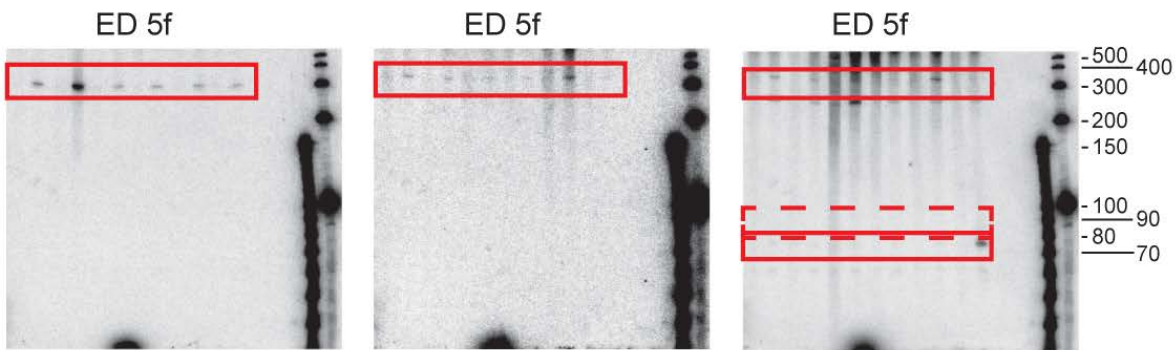
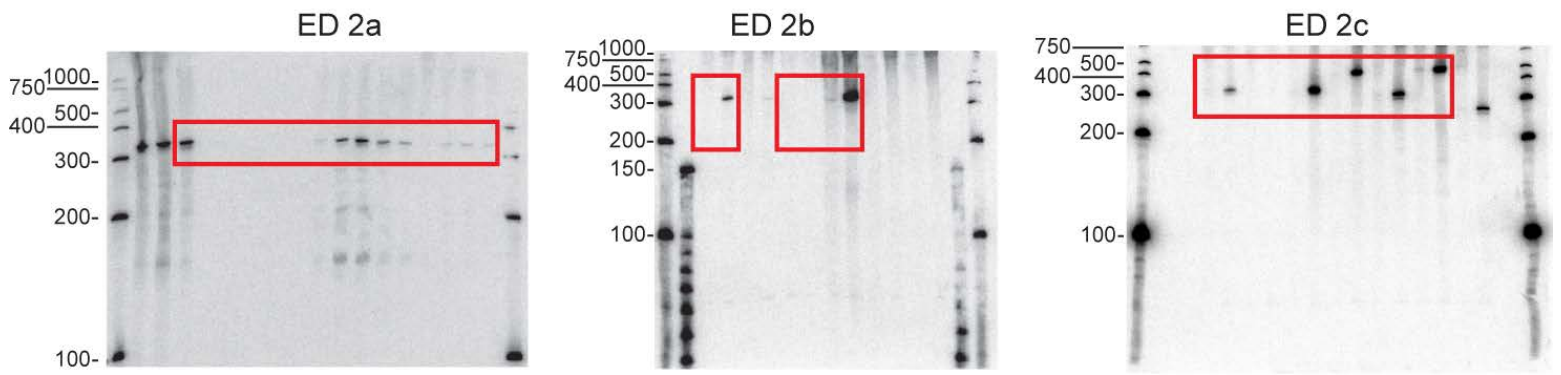


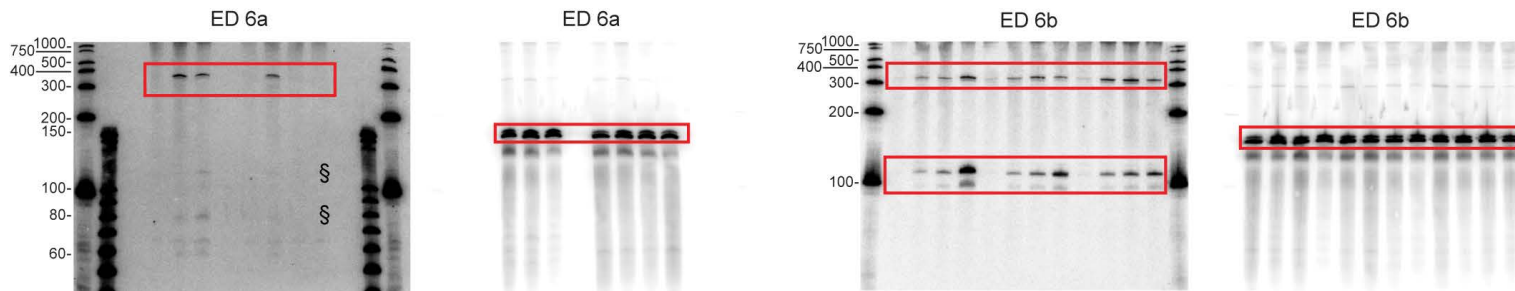
Supplementary figure: uncropped RNA blots (main-text figures)



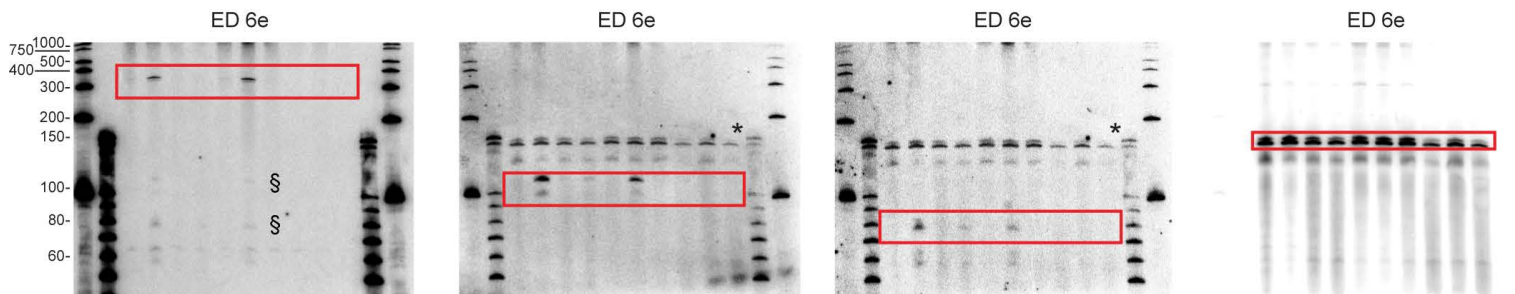
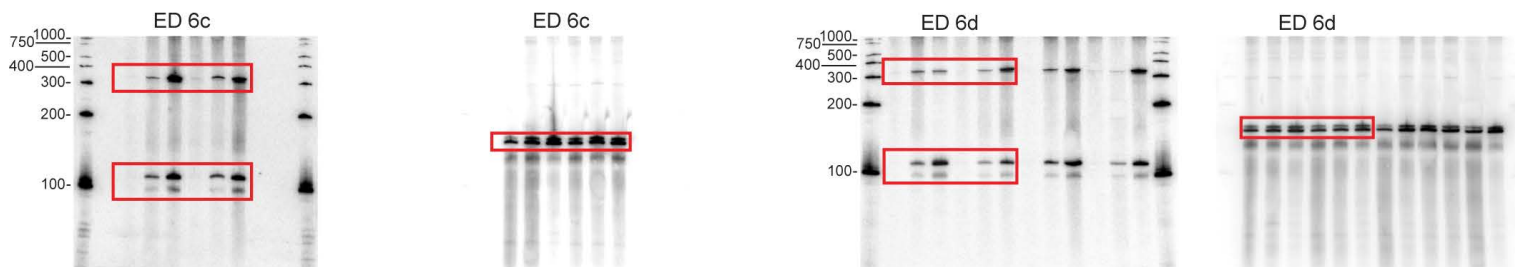
Supplementary figure: uncropped RNA blots (extended-data figures 2,5,7)



Supplementary figure: uncropped RNA blots (extended-data figure 6)



§insufficient specific activity
on *SAC6*, *USV1* intron probes; blot was not re-probed.



§insufficient specific activity
on *SAC6*, *USV1* intron probes; re-probed (right).

*incomplete stripping of 5.8S rRNA probe

