

Figure S1. YLD Counts likely benefiting from physical rehabilitation along with the “best fit” regression models.

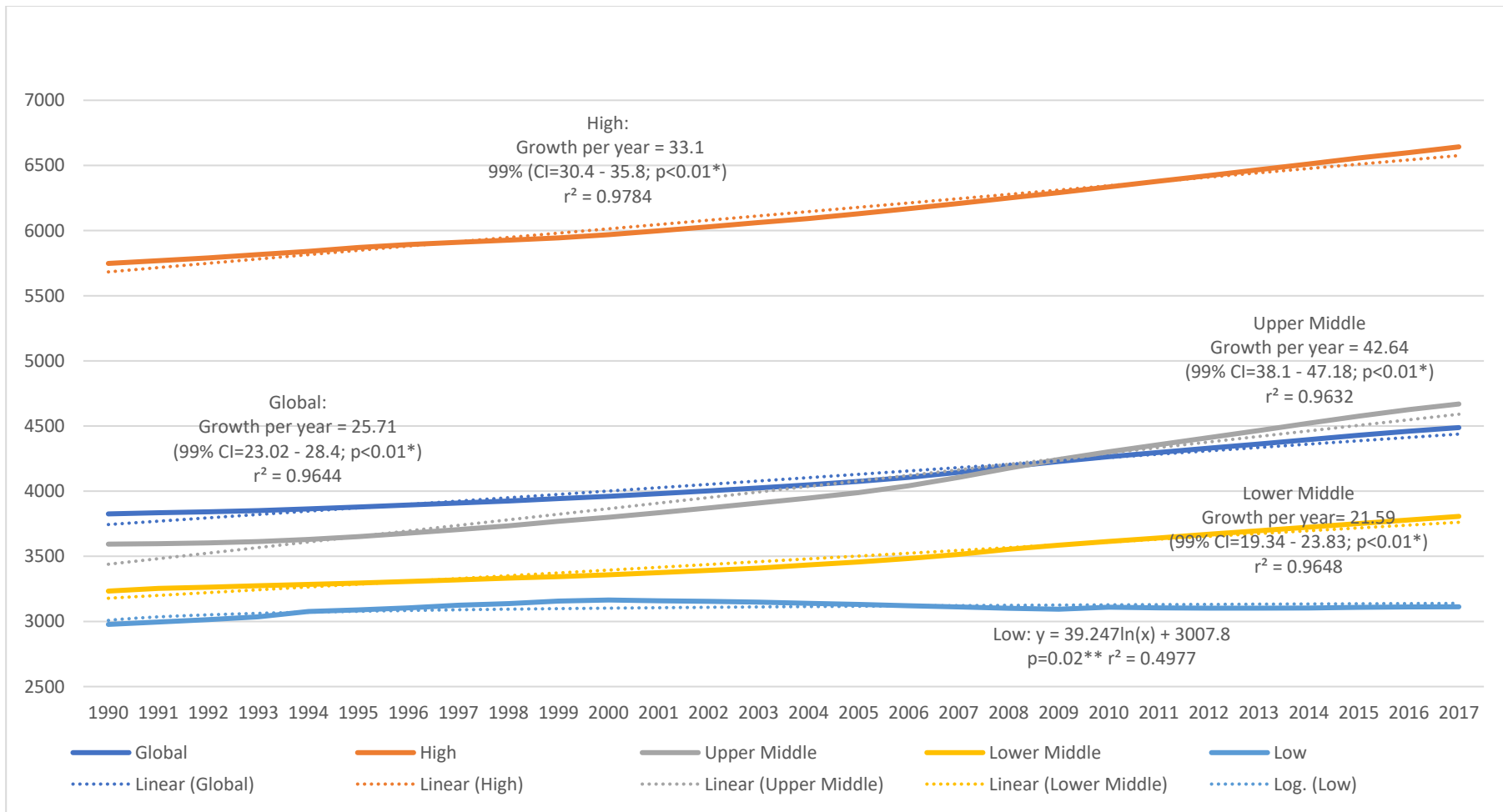


Figure S2. YLD Rates (per 100,000 People) likely benefiting from physical rehabilitation along with the “best fit” regression models.

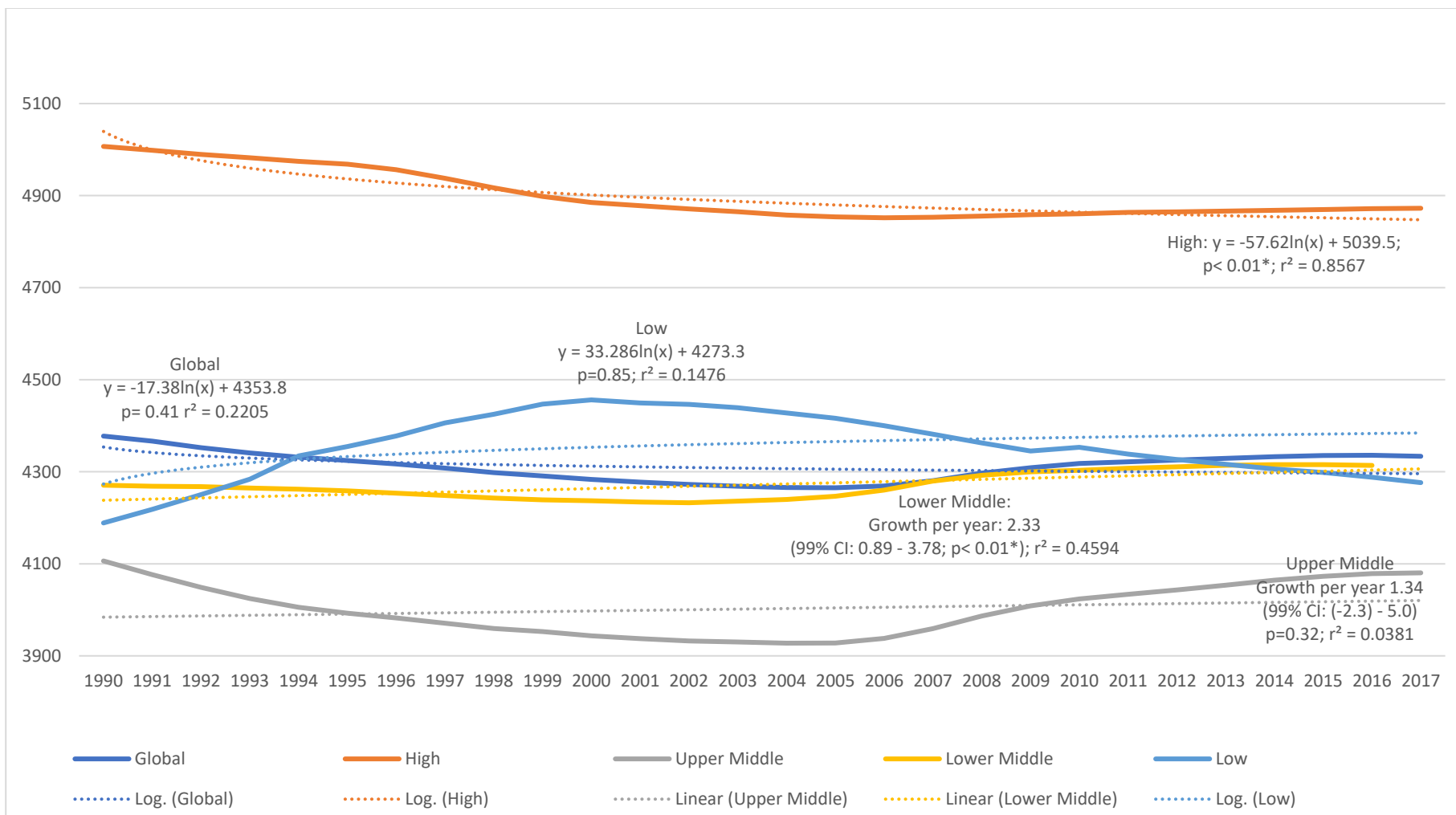


Figure S3: Age-standardized YLD Rates likely benefiting from physical rehabilitation along with the “best fit” regression models.