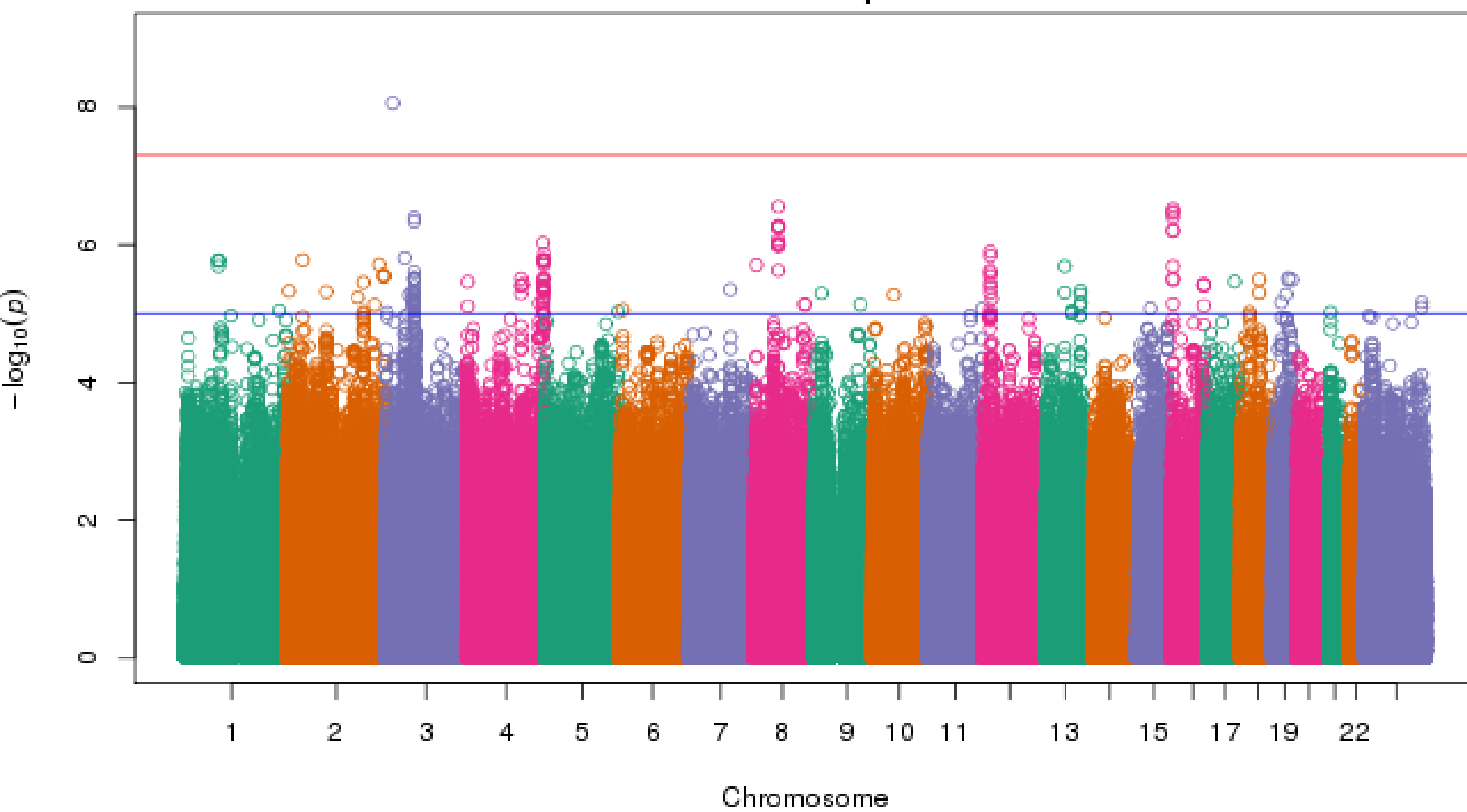
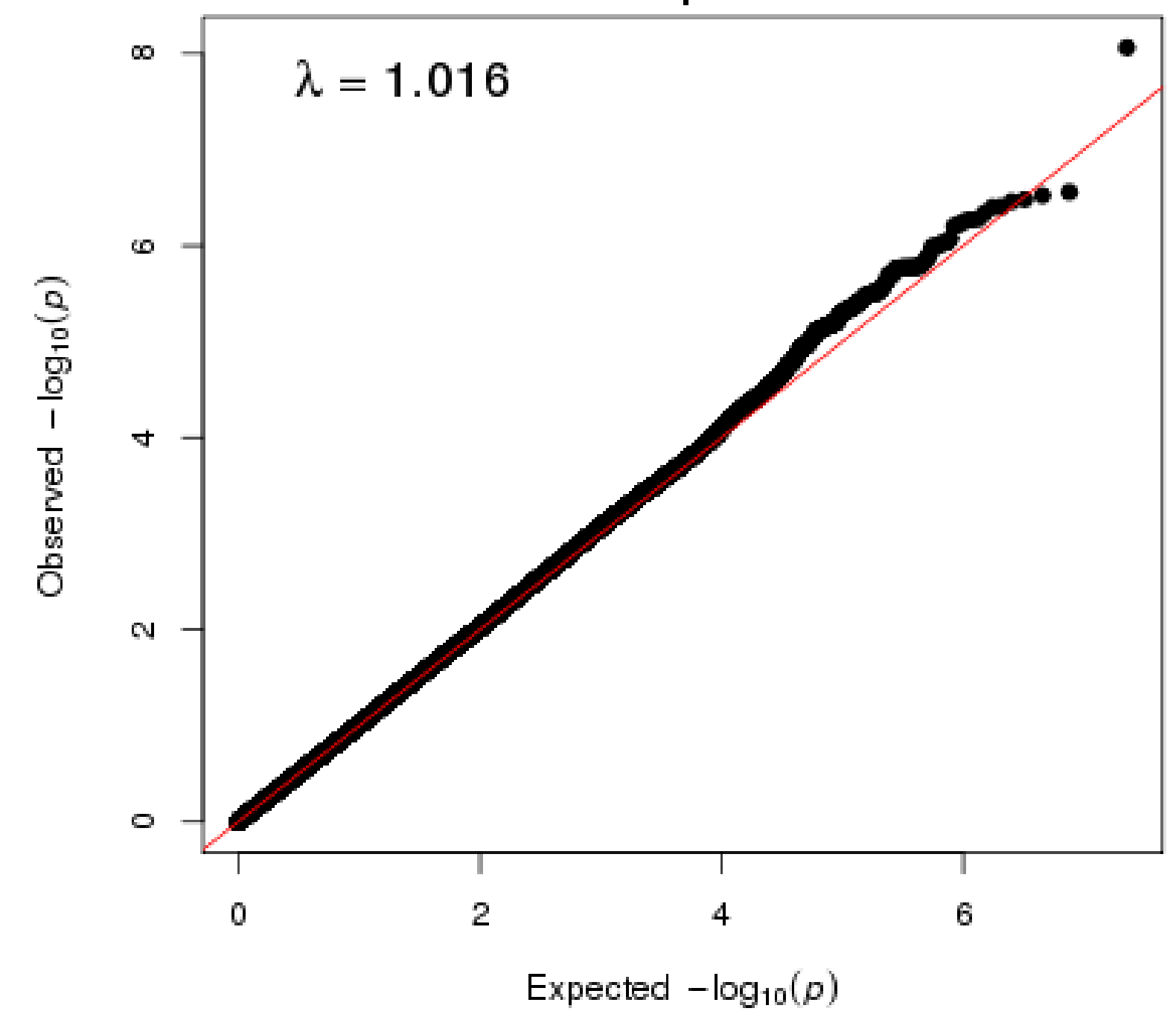


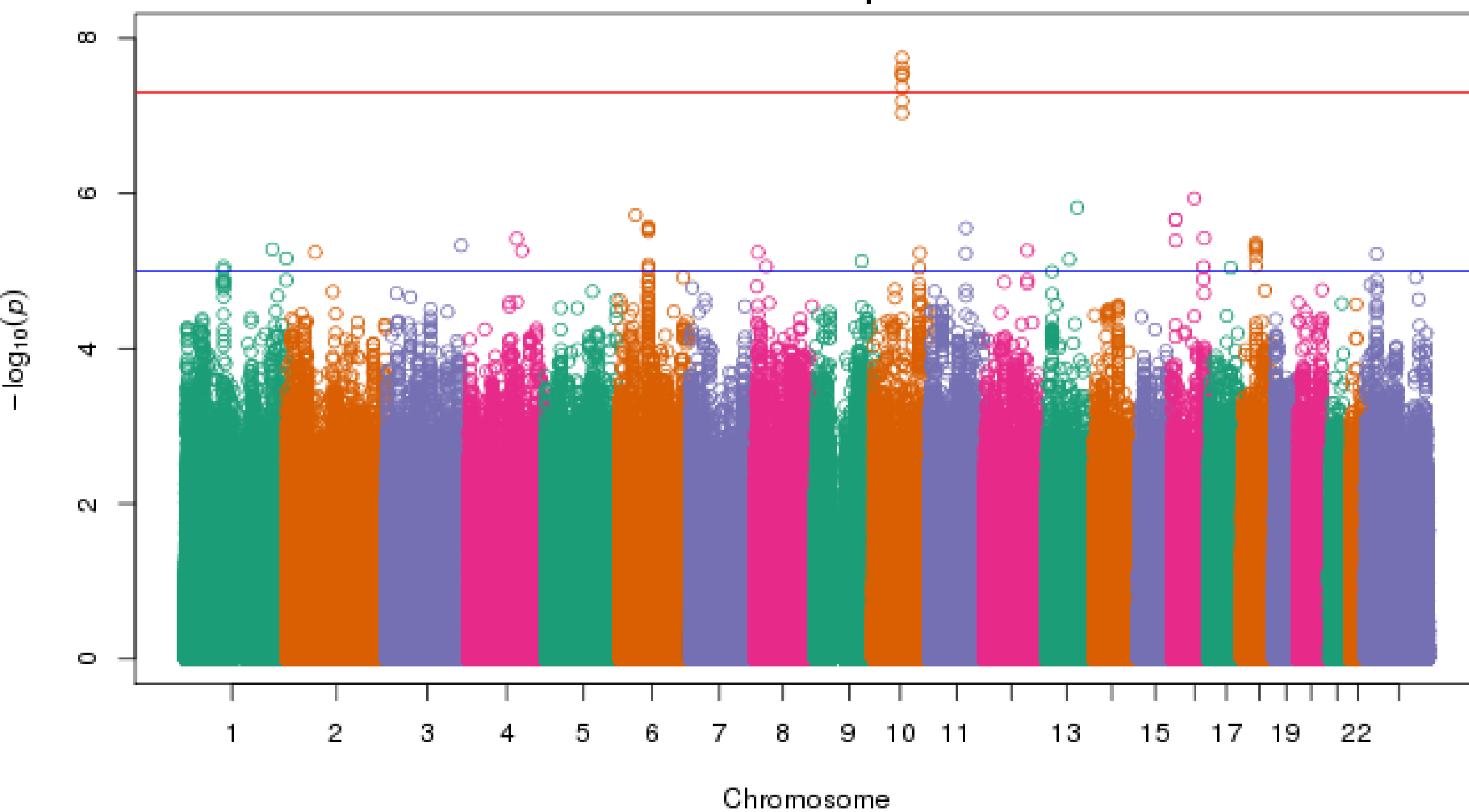
African-Americans Percent Sleep <90% SpO2
Rank-normalized, BMI-adjusted
Manhattan plot



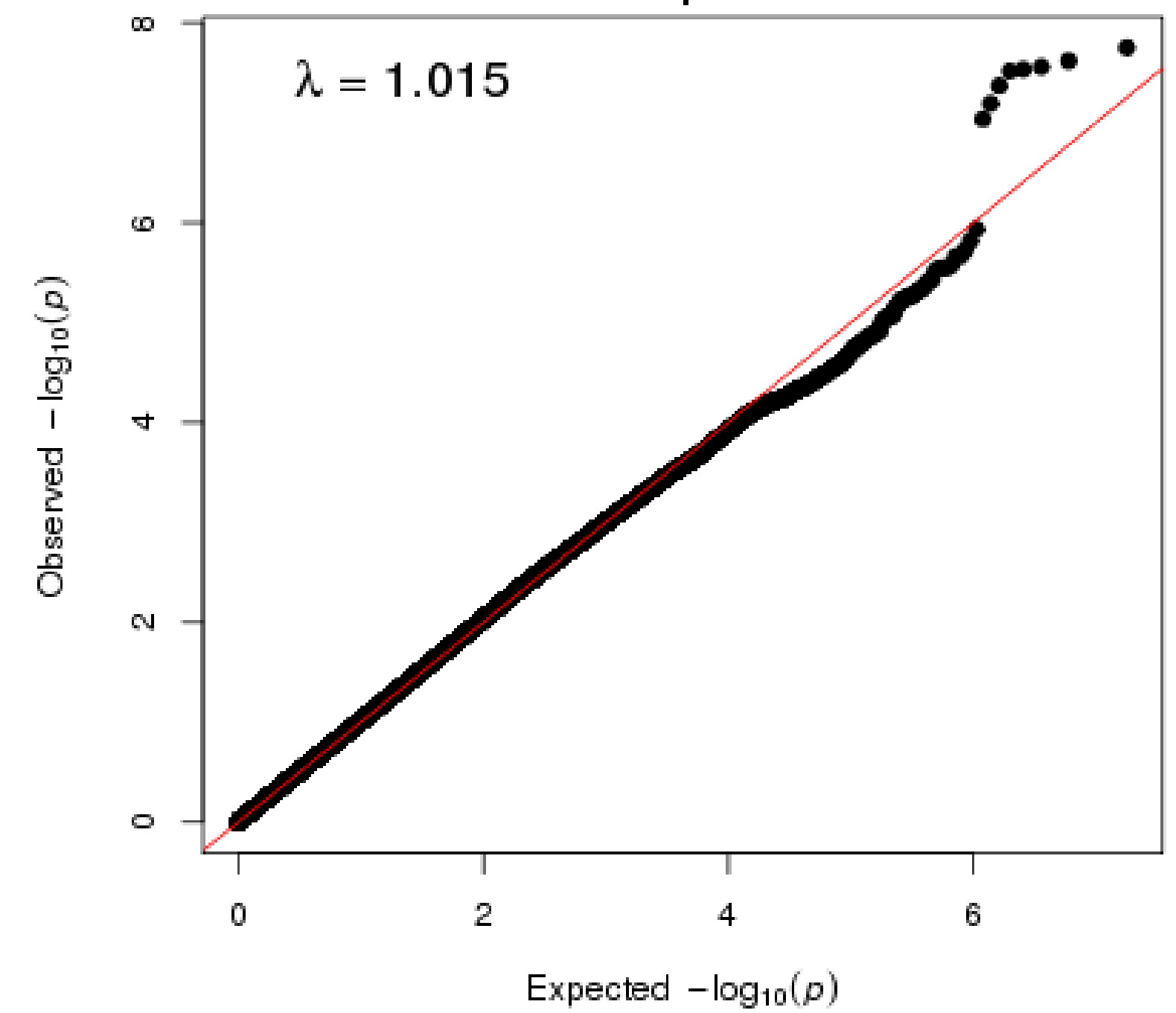
African-Americans Percent Sleep <90% SpO2
Rank-normalized, BMI-adjusted
QQ plot



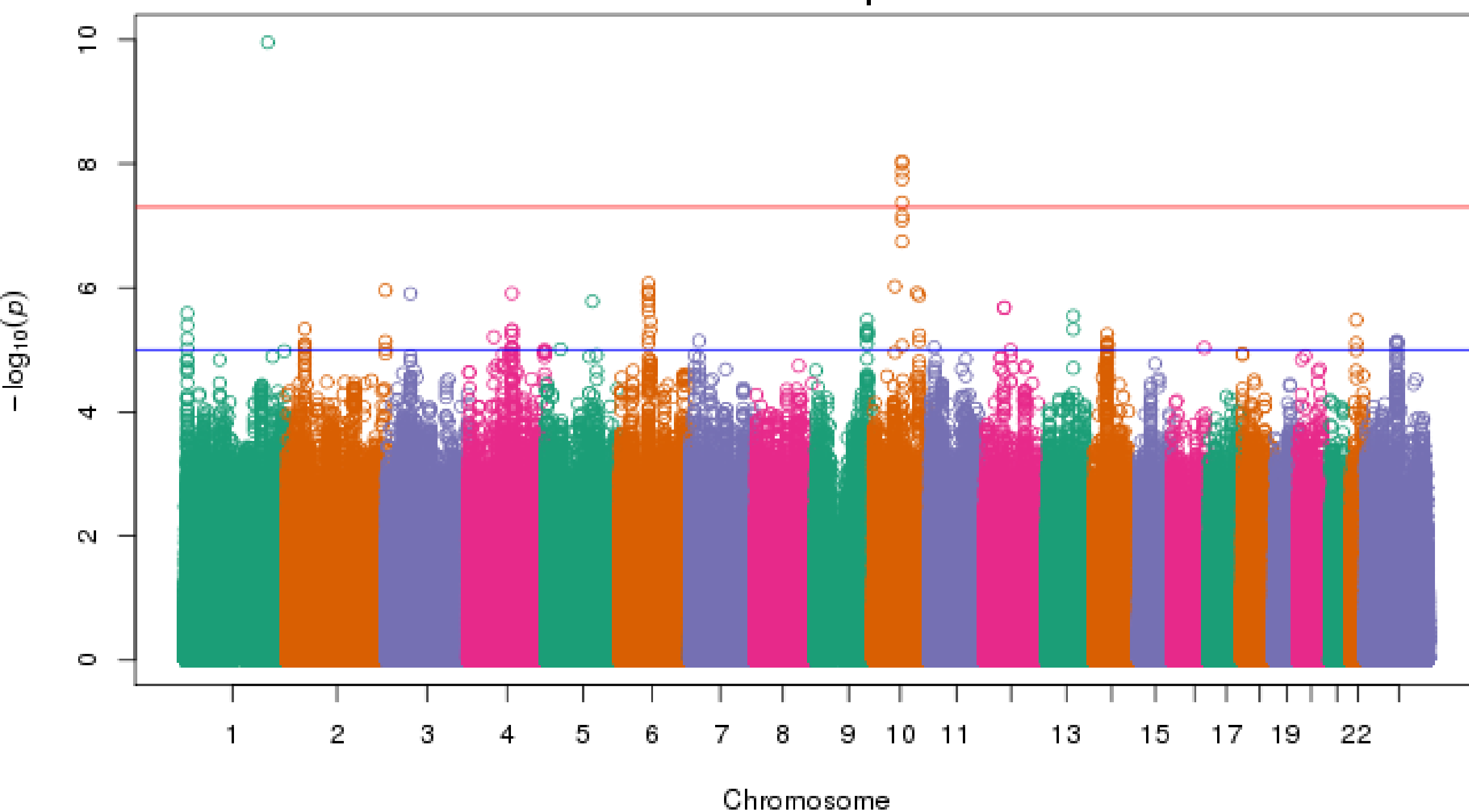
European-Americans Percent Sleep <90% SpO2
Rank-normalized, BMI-adjusted
Manhattan plot



European-Americans Percent Sleep <90% SpO2
Rank-normalized, BMI-adjusted
QQ plot



Combined (2+ Pop) Percent Sleep <90% SpO2
Rank-normalized, BMI-adjusted
Manhattan plot



Combined (2+ Pop) Percent Sleep <90% SpO2
Rank-normalized, BMI-adjusted
QQ plot

