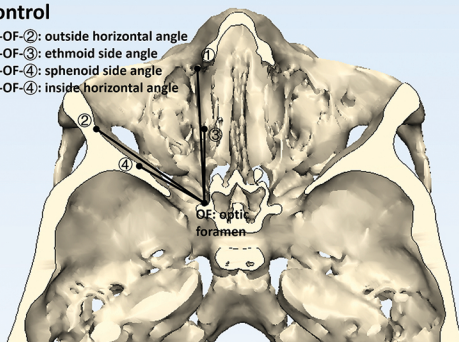
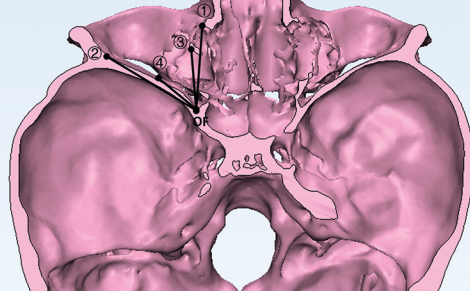


control

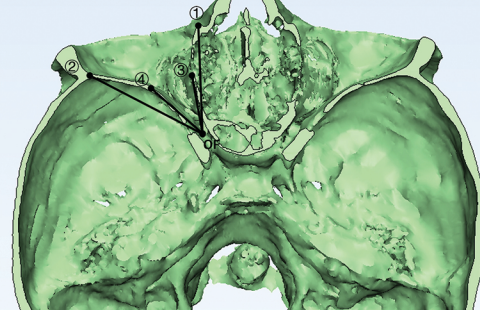
- ①-OF-②: outside horizontal angle
- ①-OF-③: ethmoid side angle
- ②-OF-④: sphenoid side angle
- ③-OF-④: inside horizontal angle



Class I. Bilateral coronal synostosis

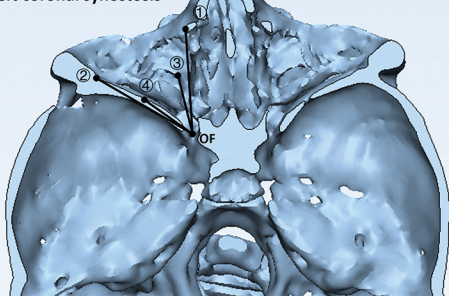


Class II. Pansynostosis

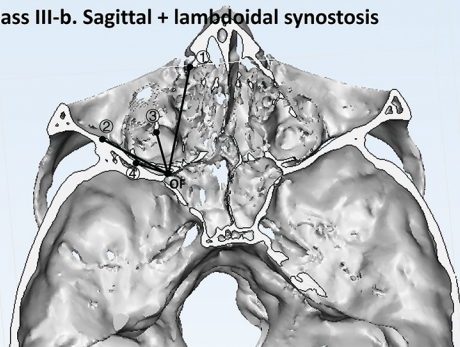


Class III-a. Unilateral coronal + metopic synostosis

Left coronal synostosis



Class III-b. Sagittal + lambdoidal synostosis



Class III-c. Others

