

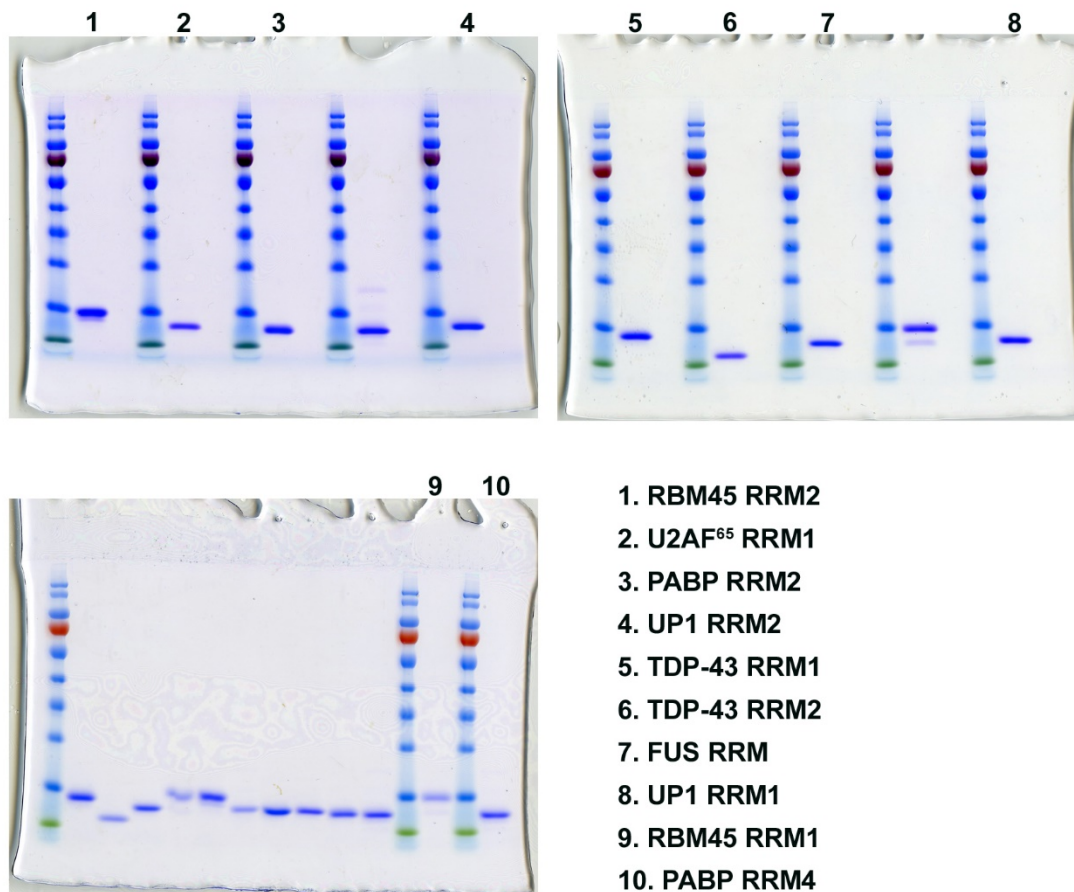
Supplementary Information

RNA recognition motifs of disease-linked RNA-binding proteins contribute to amyloid formation

Sashank Agrawal^{1,2}, Pan-Hsien Kuo², Lee-Ya Chu^{2,3,4}, Bagher Golzarroshan²,
Monika Jain^{1,2} and Hanna S. Yuan^{1,2*}

This file includes:

Supplementary Figure 1



Supplementary Figure 1. The full-length SDS-PAGE gels show that each of the ten RRMs was purified to a high homogeneity (cropped images are shown in Figure 1).