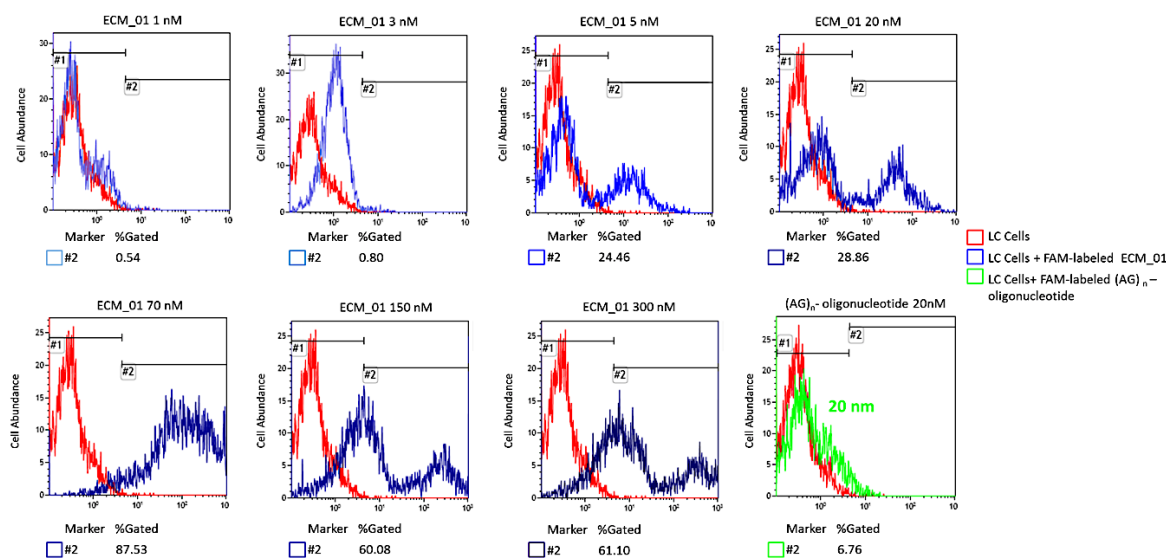


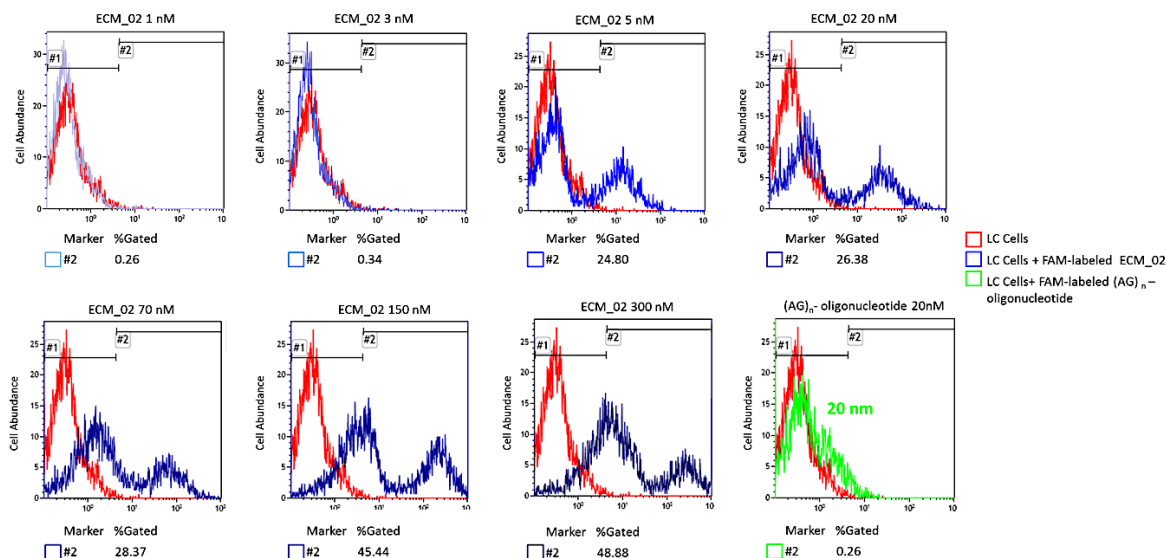
# Supplementary Materials: Development of DNA Aptamers to Native EpCAM for Isolation of Lung Circulating Tumor Cells from Human Blood

Galina S. Zamay, Olga S. Kolovskaya, Tatiana I. Ivanchenko, Tatiana N. Zamay, Dmitry V. Veprintsev, Valentina L. Grigorieva, Irina I. Garanzha, Alexey V. Krat, Yury E. Glazyrin, Ana Gargaun, Ivan N. Lapin, Valery A. Svetlichnyi, Maxim V. Berezovski and Anna S. Kichkailo

A



B



**Figure 1.** Binding of individual aptamers to cells. (A) Flow cytometry of LC cells and LC cells preincubated with FAM-labeled ECM\_01 in concentrations 1 nM, 3 nM, 5 nM, 20 nM, 70 nM, 150 nM and 300 nM or FAM-labeled (AG)<sub>40</sub>-oligonucleotide in concentration 20 nM. (B) Flow cytometry of LC cells and LC cells preincubated with FAM-labeled ECM\_02 in concentrations 1 nM, 3 nM, 5 nM, 20 nM, 70 nM, 150 nM and 300 nM or FAM-labeled (AG)<sub>40</sub>-oligonucleotide in concentration 20 nM.



© 2019 by the authors. Licensee MDPI, Basel, Switzerland. This article is an open access article distributed under the terms and conditions of the Creative Commons Attribution (CC BY) license (<http://creativecommons.org/licenses/by/4.0/>).