

Supplementary Materials

Mutated *Rnf43* Aggravates *Helicobacter Pylori*-Induced Gastric Pathology

Victoria Neumeyer, Michael Vieth, Markus Gerhard and Raquel Mejías-Luque

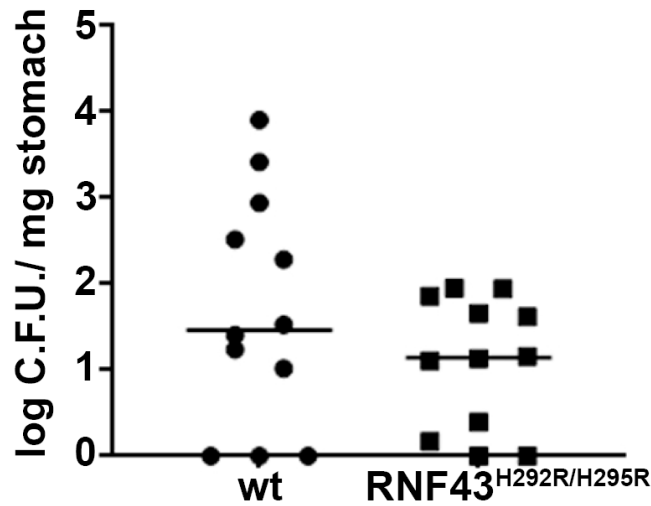


Figure S1. Colony forming units in the stomach of *H. pylori*-infected mice.

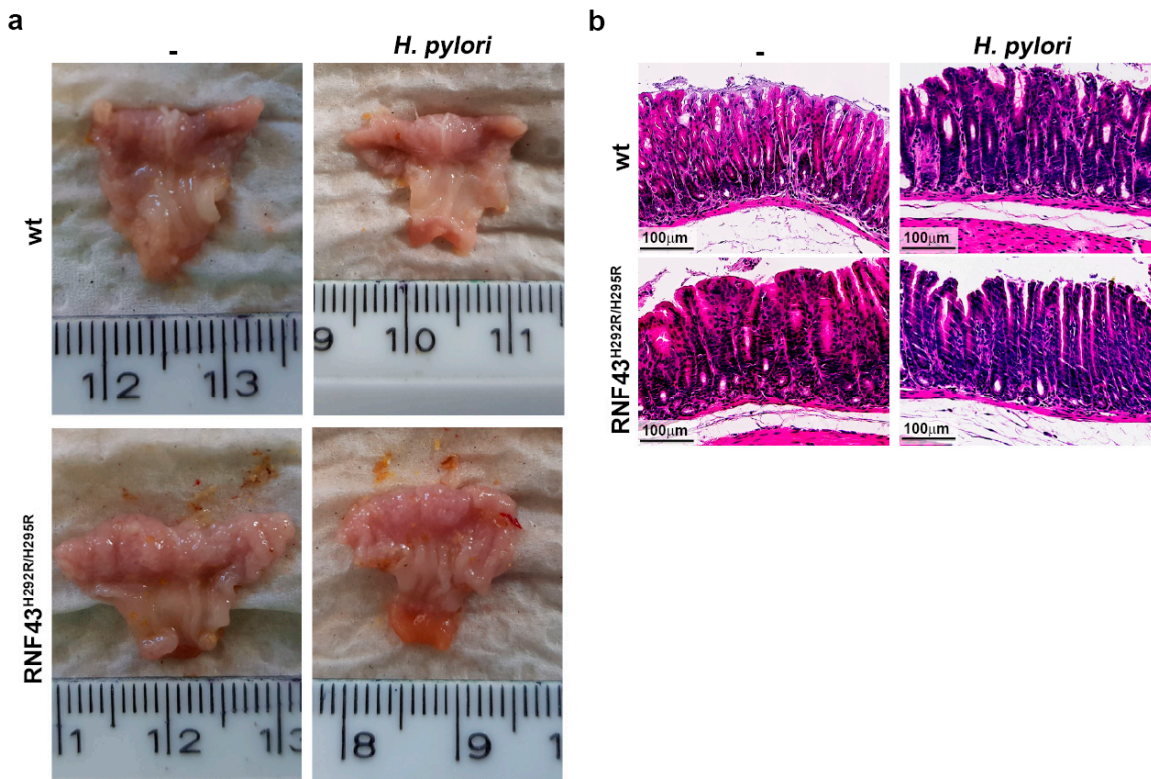


Figure S2. Gastric pathology in RNF43^{H292R/H295R} mice is mainly observed in the corpus. (a) Macroscopic images of whole stomachs. (b) Representative H&E stainings of stomach antrum.

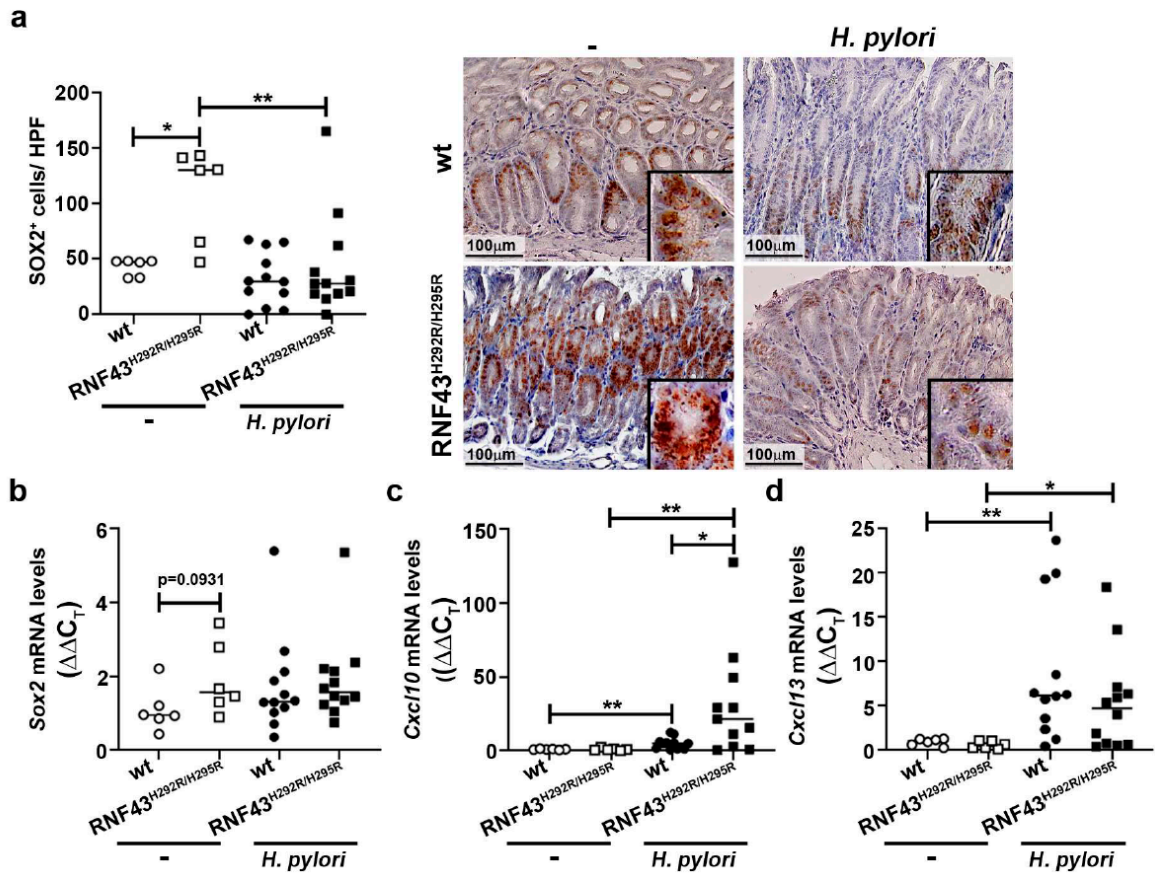


Figure S3. Representative images and quantification of SOX2 expression (a) and mRNA expression levels of *Sox2* (b), *Cxcl10* (c) and *Cxcl13* (d) in the stomach of control and infected mice.



© 2019 by the authors. Licensee MDPI, Basel, Switzerland. This article is an open access article distributed under the terms and conditions of the Creative Commons Attribution (CC BY) license (<http://creativecommons.org/licenses/by/4.0/>).