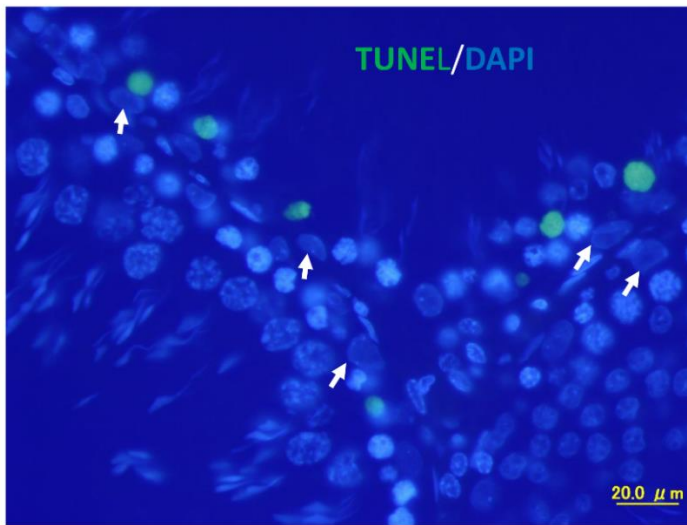


**Figure S1:** Low-power micrograph showing perinuclear accumulation of damaged mitochondria (broken arrows) and mitophagic vacuoles (arrows) in SC of ETRs. S: SC nucleus; LD: lipid droplet.



**Figure S2:** TUNEL positive germ cells (green labeling) of ETRs with non-apoptotic. Arrows mark SCs nuclei.

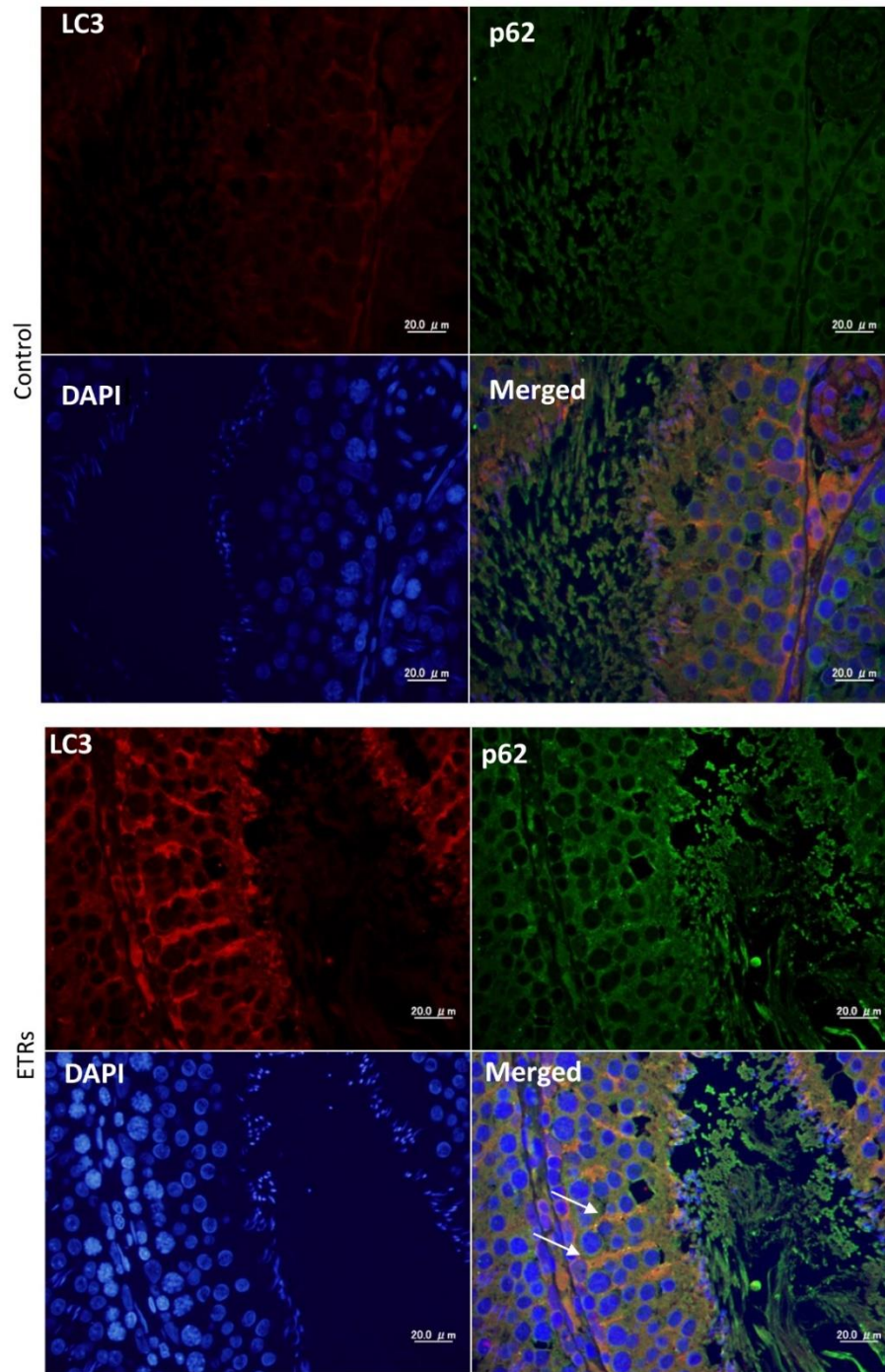
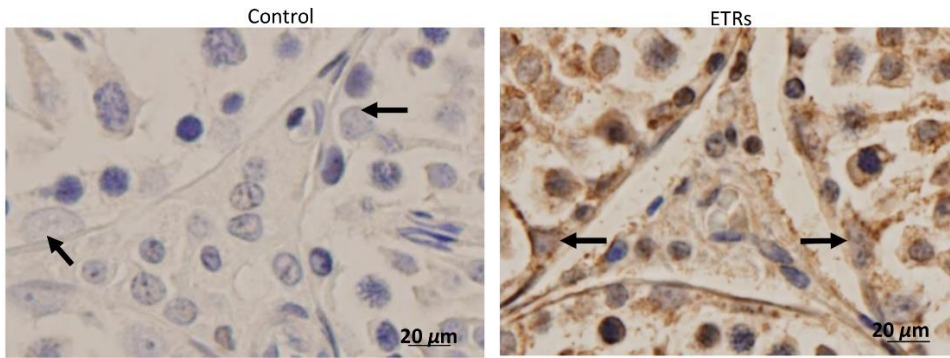
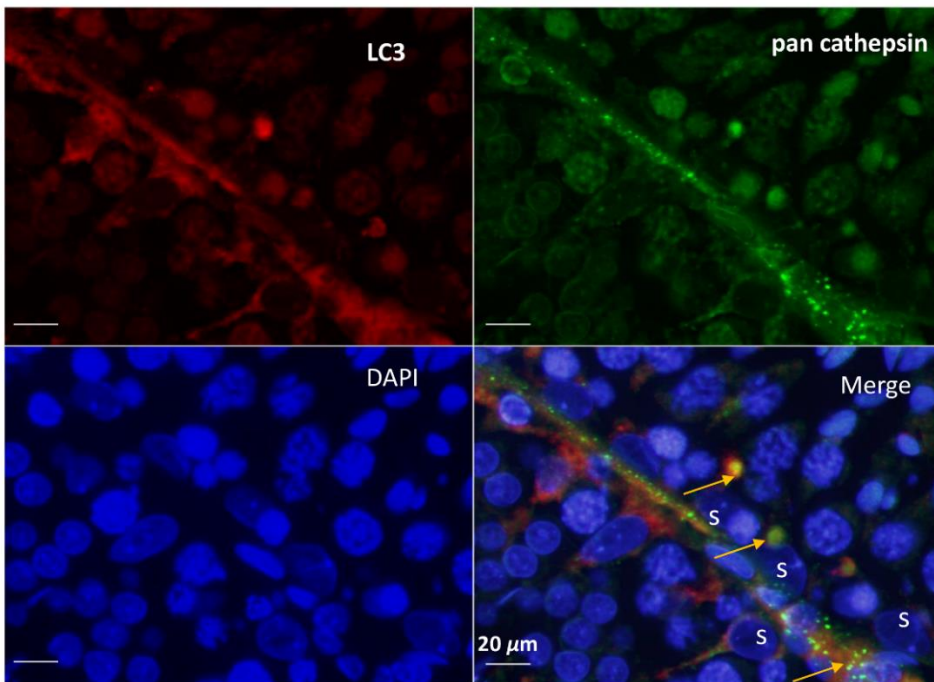


Figure S3. Enhanced LC3 (red) and p62 (green) colocalization in SCs of ETRs. The white arrows indicated colocalization signals upon merging (yellow-orange).



**Figure S4: Overexpression of PINK1 in ETR SCs. Arrows indicate SCs nuclei.**



**Figure S5: IF double labeling of LC3 (red) and Pan cathepsin (green) in ETRs. Arrows mark enhanced colocalization signals (yellow-orange) in SCs. S, SC nucleus.**