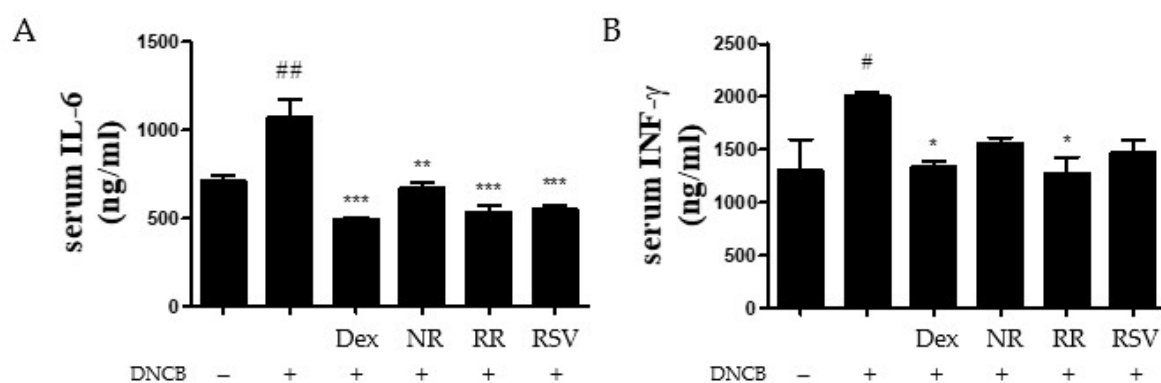
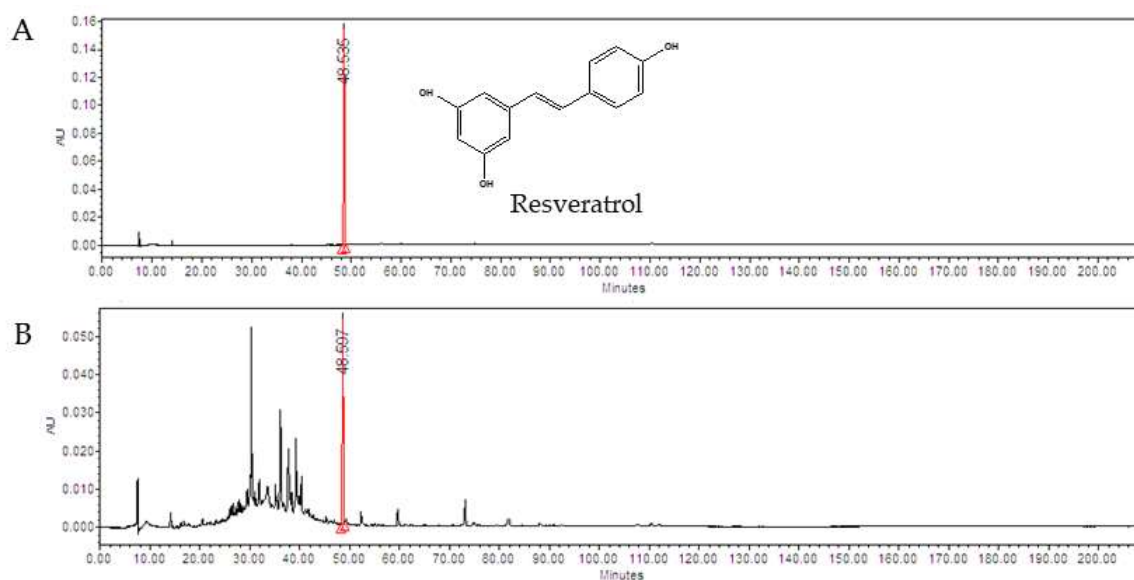


1 **Supplementary:**



2  
3 **Figure 1.** Inhibitory effects of RR on inflammatory cytokine expression in serum of DNCB-induced  
4 NC/Nga mice. The level of serum IL-6 (A) and INF-gamma (B) were measured using ELISA.



5

---

Content of resveratrol in RR extract ( $\mu\text{g}/1000$  mg of powdered) at 306 nm.

---

Sample	Resveratrol
RR extract	$3.59 \pm 0.65$

---

6 **Figure 2.** Contents of Resveratrol in the RR extract.