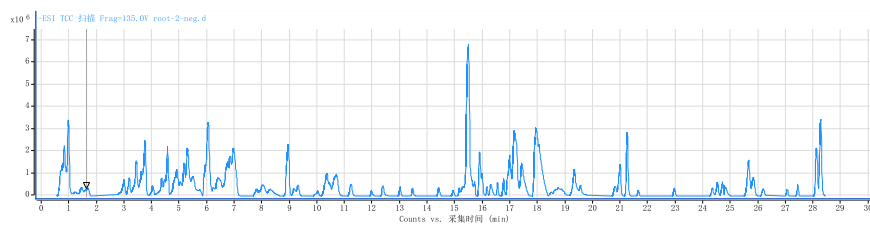
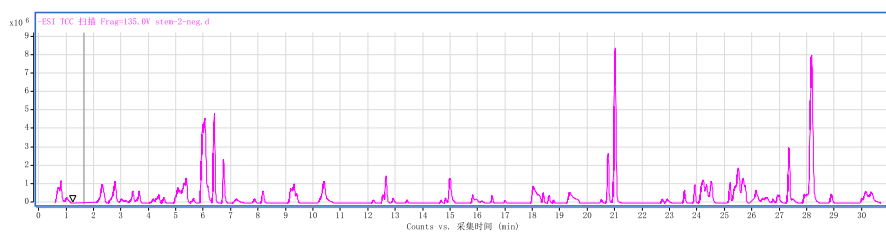


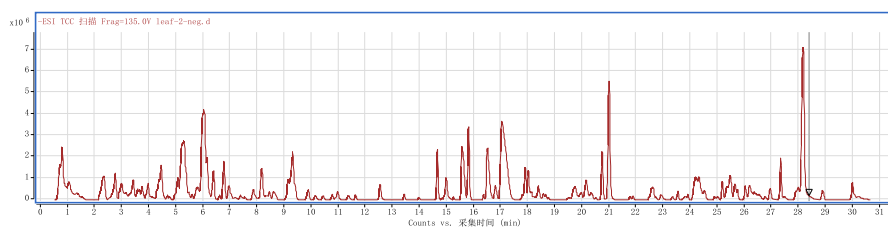
Figure S1. Typical LC-MS extracted ion chromatograms of metabolites that extracted from different tissues.



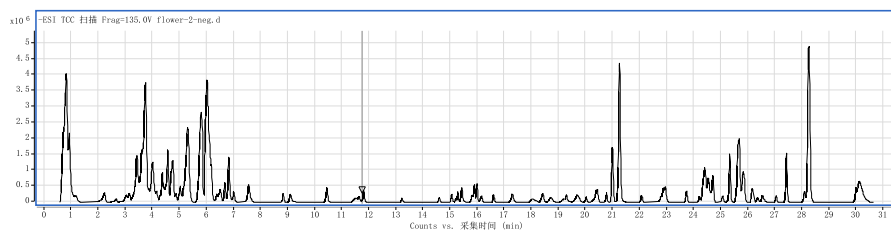
(a)



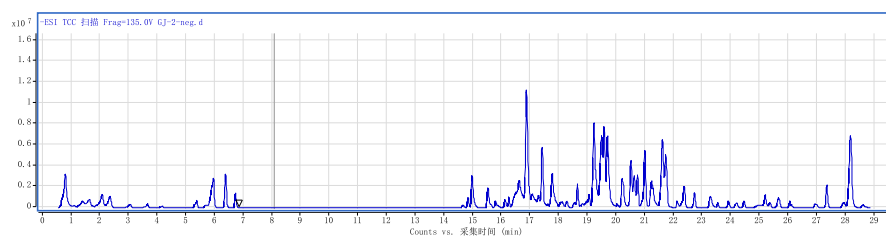
(b)



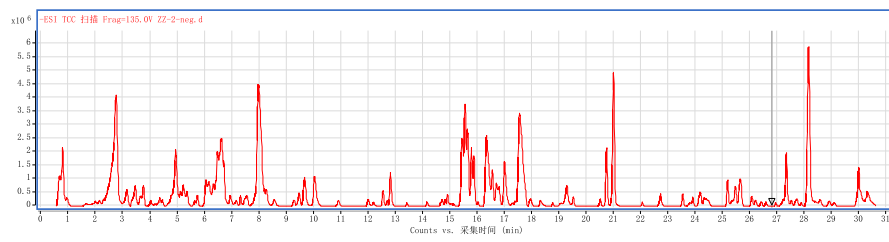
(c)



(d)



(e)



(f)

HPLC-MS (negative) total ion chromatograms (TIC) of different parts of *P. cuspidatum*.

(a) Root, (b) Stem, (c) Leaf, (d) Flower, (e) Rhizome, (f) Seed