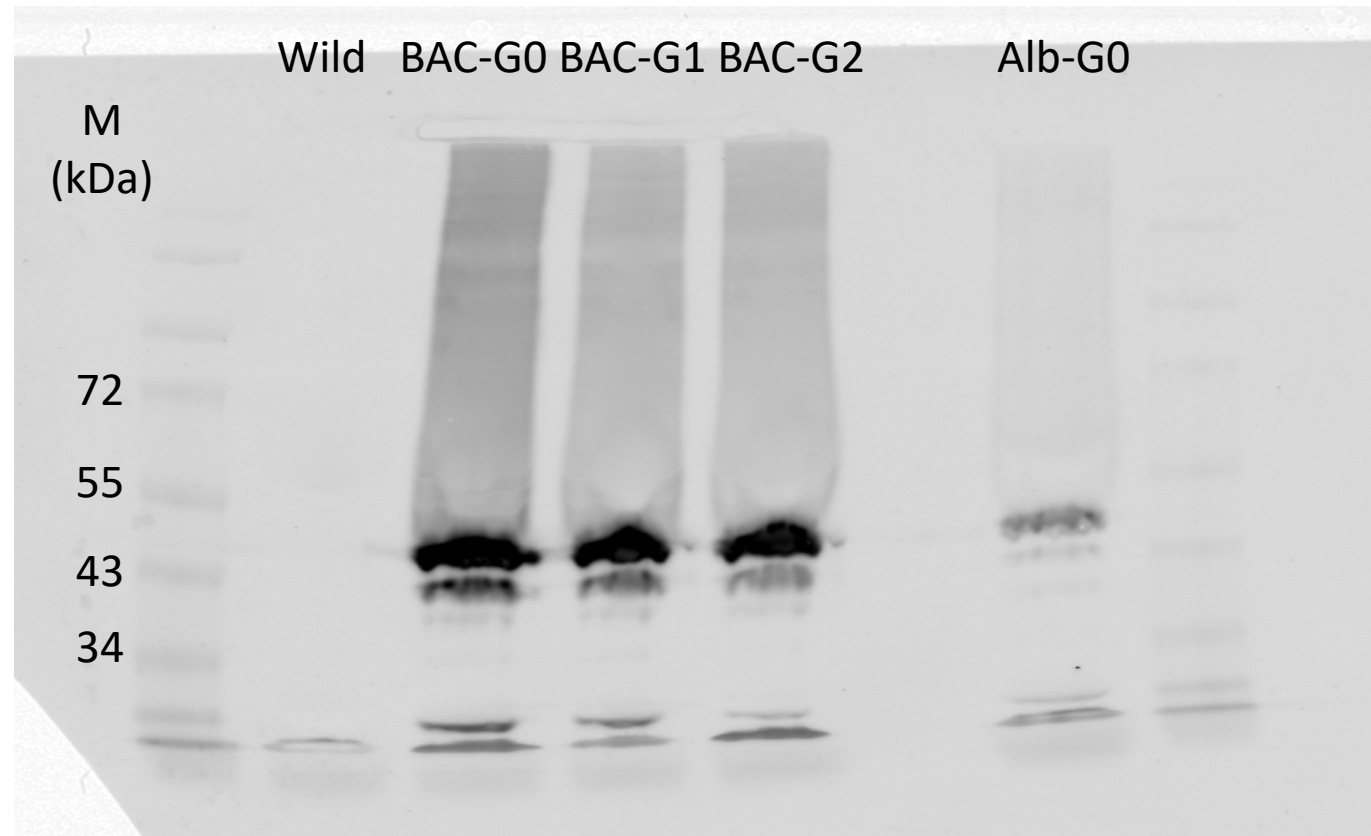


## Supplemental Figure 2



**Legend.** Shown is a Western blot for APOL1, which appears as a dimer located at approximately 42 and 44 kDa. Serum (2  $\mu$ l) from the following mice were run on the gel: wild-type mouse (as a negative control), BAC APOL1-G0 mouse, BAC APOL1-G1 mouse, BAC-APOL1G2 mouse and as a positive control, mouse expressing APOL1-G0 under the control of an albumin promoter.