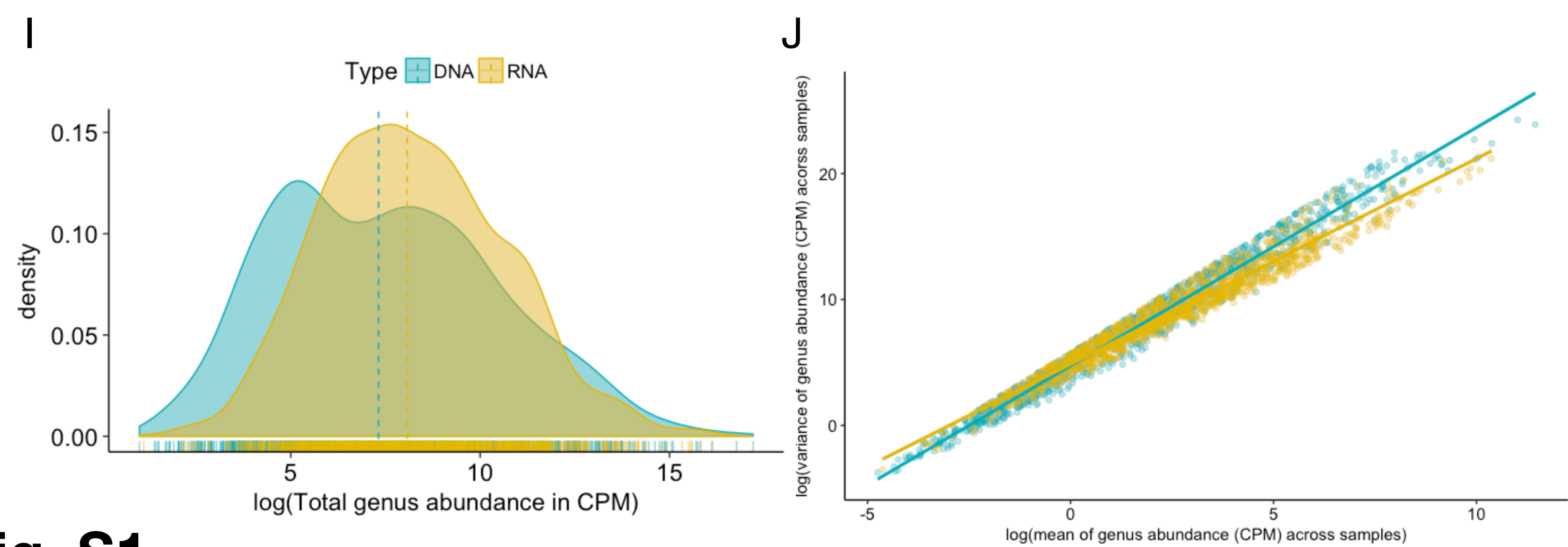
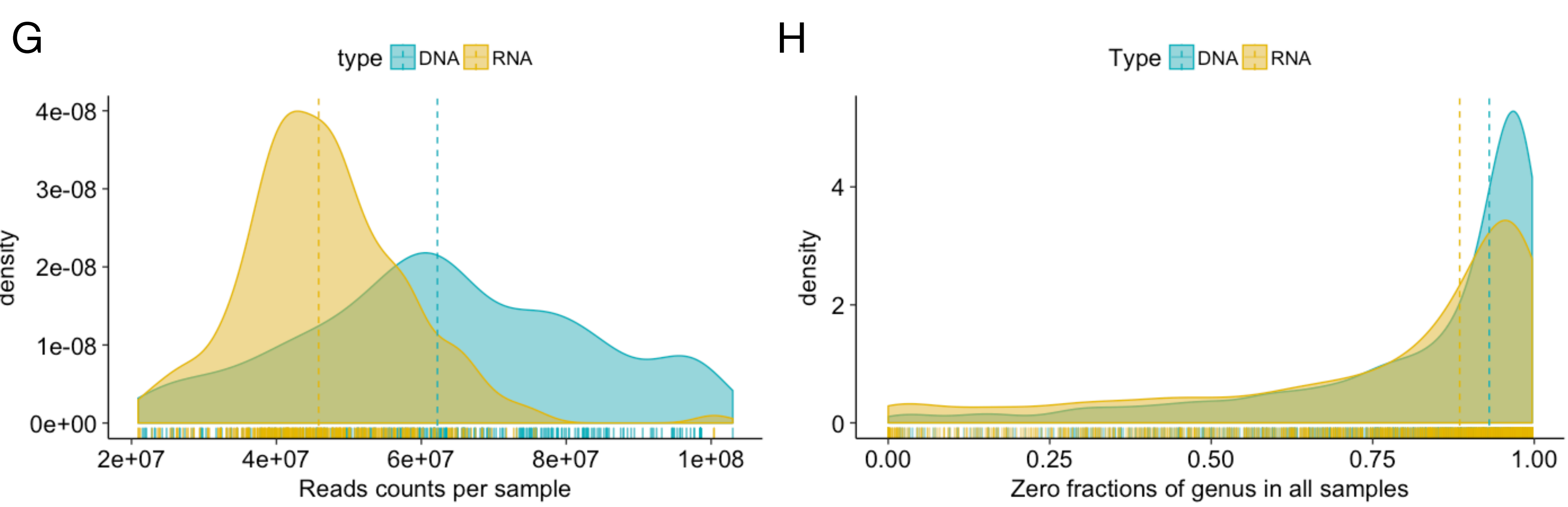
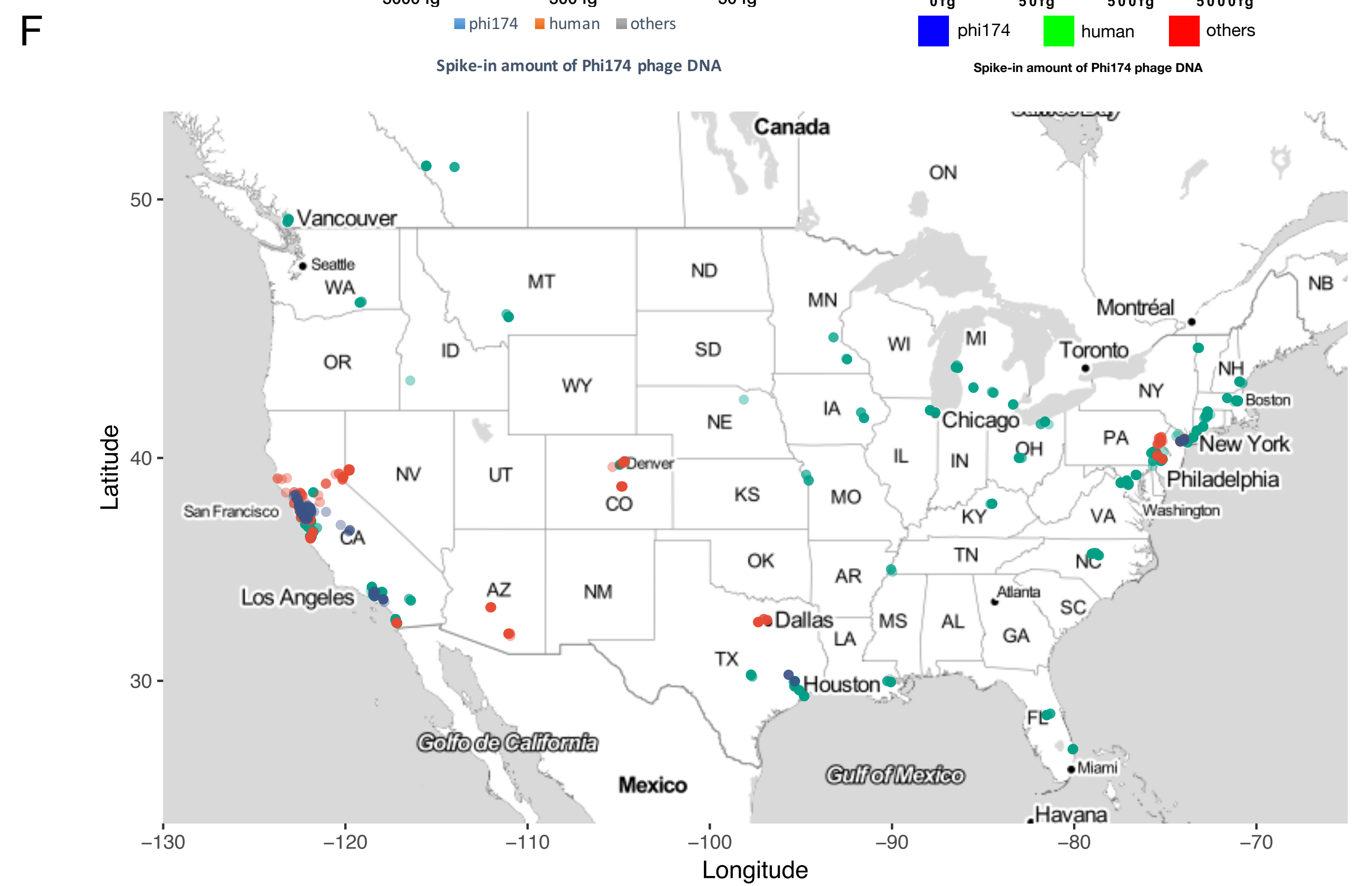
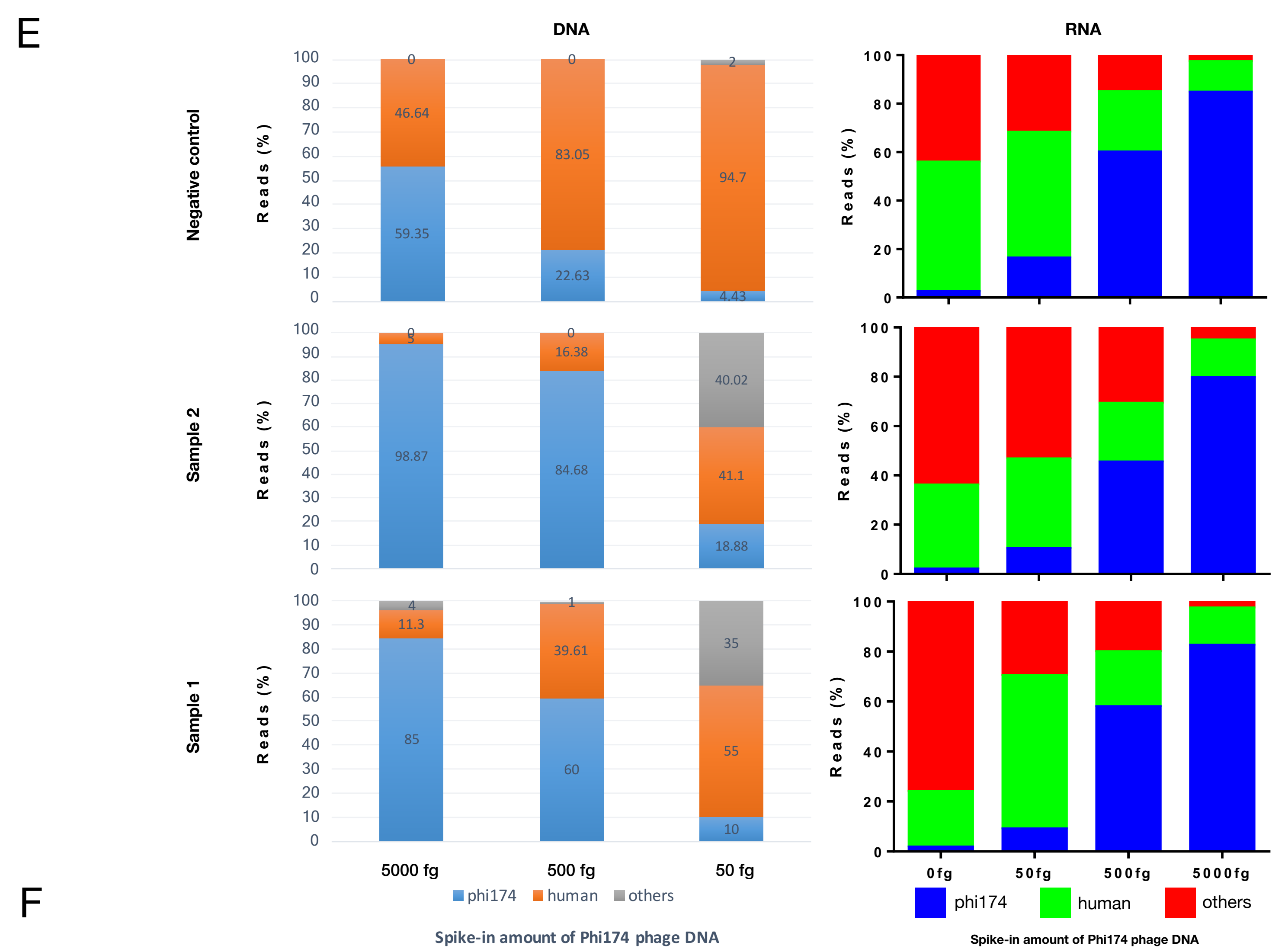


**C**

Copies	Name	Detection
200	Human parainfluenza virus 3	YES
200	Rhinovirus 1A	YES
400	Human metapneumovirus	YES
400	Betacoronavirus 1 (coronavirus OC43)	YES
400	Enterovirus B	YES
1000	Human respiratory syncytial virus	YES
1000	Coronavirus 229E (alphacoronavirus)	YES
1000	Human parainfluenza virus 2	YES
1000	Influenza B virus	YES
1400	Influenza A virus	YES
10000	Human immunodeficiency virus 1	YES
10000	Cowpea mosaic virus	YES



**Fig. S1**