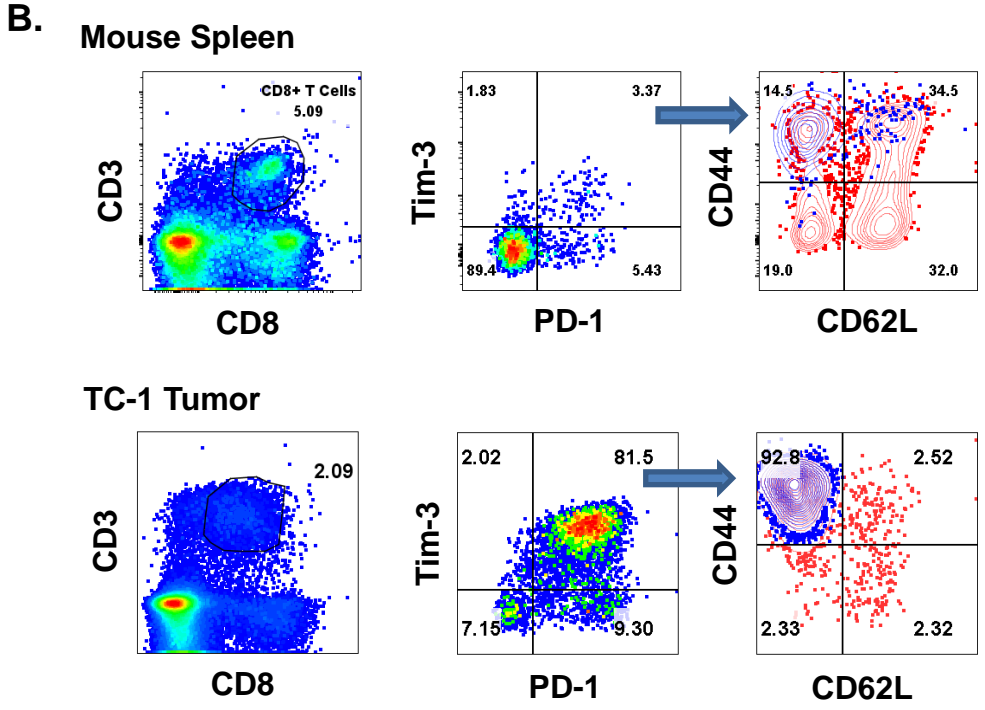
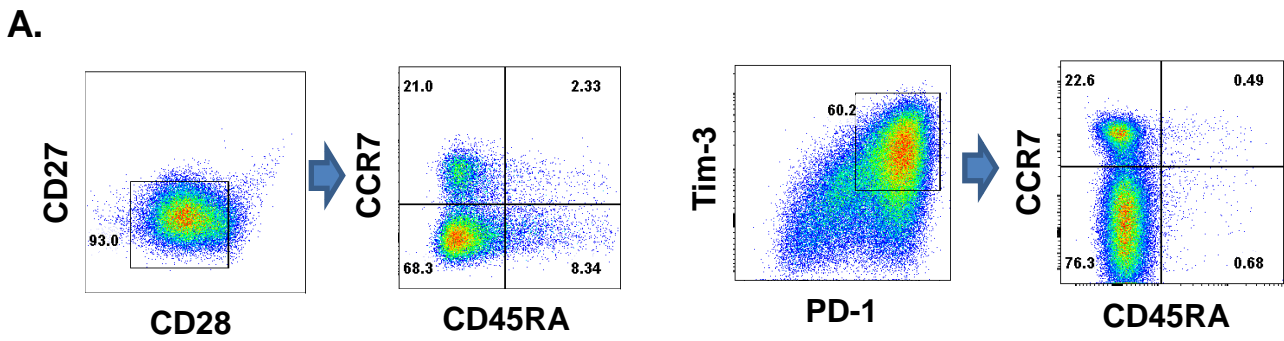


Supplementary Figure 2.



Supplementary Figure 2 **A.** Dissociated SCCHN tumor tissue was stained for the indicated antibodies. Displayed dot plots are gated on CD3+ CD8+ T cells. Arrow indicates the CD45RA/CCR7 plots derive from the indicated CD27/CD28- or PD-1+/Tim-3+ gate. **B.** Staining of freshly isolated mouse splenocytes or dissociated TC-1 tumor tissue. Middle dot plots are derived from CD3+ CD8+ gates drawn on left panels. Arrows indicate the PD-1+/Tim-3+ gated population (blue) that was overlaid on total CD3+ CD8+ cells comparing CD62L/CD44 expression