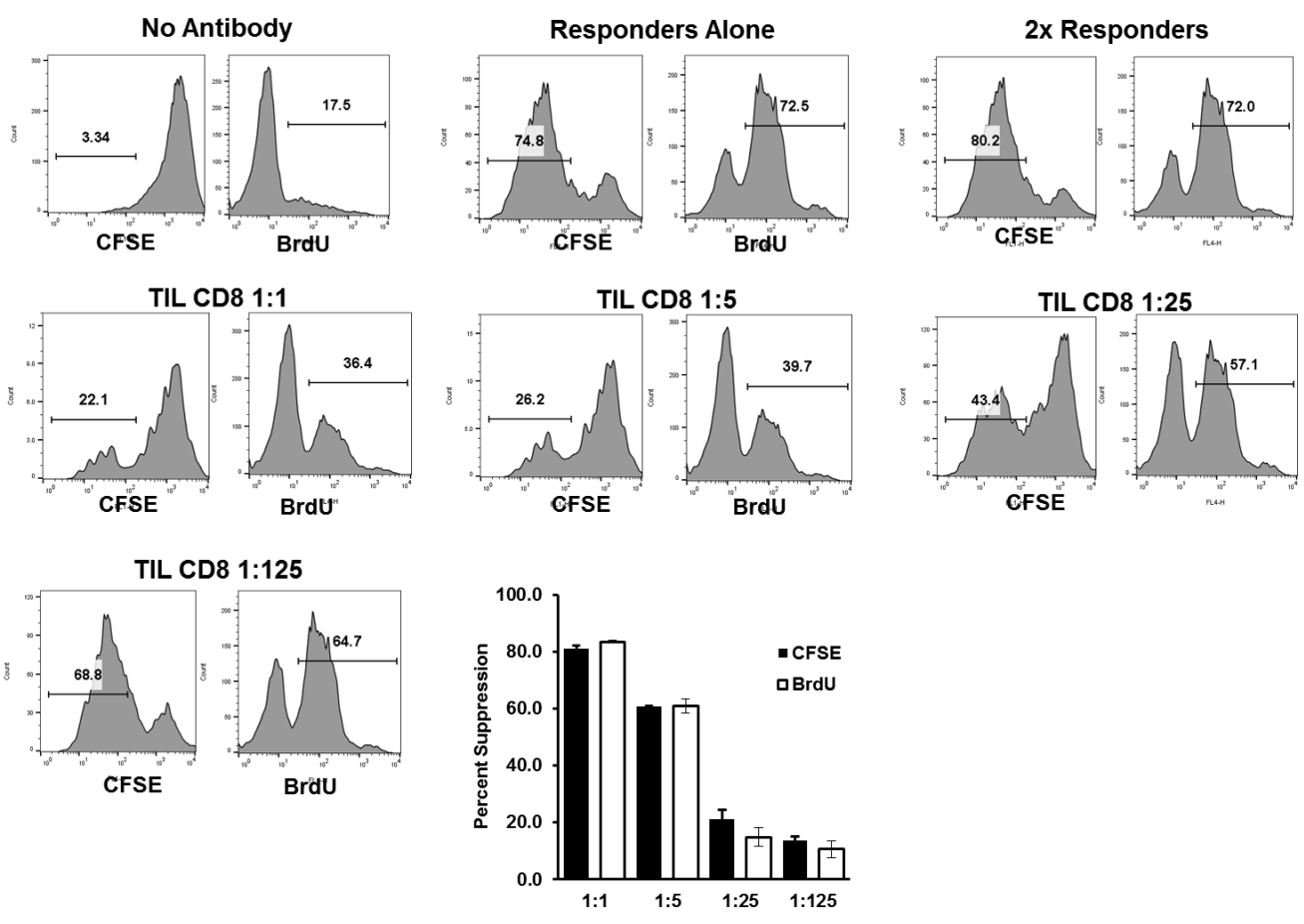


# Supplementary Figure 3.



**Supplementary Figure 3 .** CD3<sup>+</sup> CD8<sup>+</sup> PD-1<sup>+</sup> Tim-3<sup>+</sup> and CD3<sup>+</sup> CD8<sup>+</sup> CD27<sup>-</sup> CD28<sup>-</sup> cells were sorted from SCCHN tissue. Purified cells were then used in an *in vitro* suppression assays with autologous T cells. Ratios indicate the number of suppressors to responders. Controls are using equivalent numbers of responder cells alone. Responders were labeled with CFSE. BrdU was added during the final 18 hours of culture. Indicated data are representative of at least three independent experiments. Error bars represent SD of replicate wells for each condition.