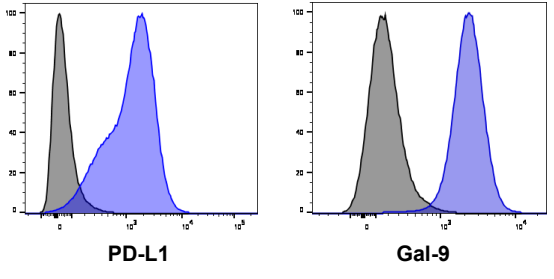
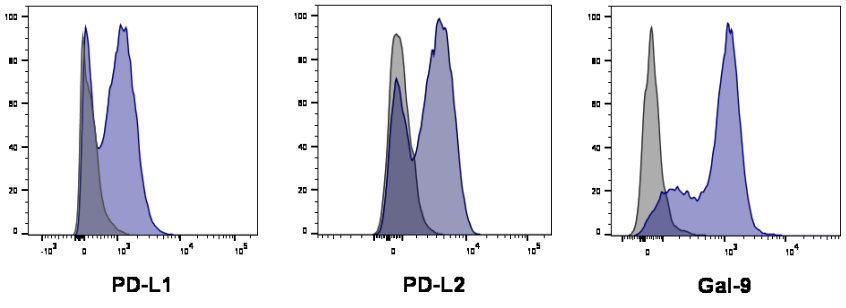


Supplementary Figure 6.

TC-1 Tumor Cells- *ex vivo*



TC-1 Tumor Cells- *in vitro*



Supplementary Figure 6. B. Histograms demonstrating PD-L1, PD-L2, or galectin-9 (Gal-9) expression on TC-1 tumor cells (purple) as compared to isotype controls (grey). Top, TC-1 tumors growing in mice were harvested and dissociated into a single cell suspension by collagenase/hyaluronidase digestion prior to staining and FACS analysis. Tumor cells were identified by gating on CD45 negative cells. Bottom, TC-1 cells growing *in vitro* were stained for the indicated proteins.