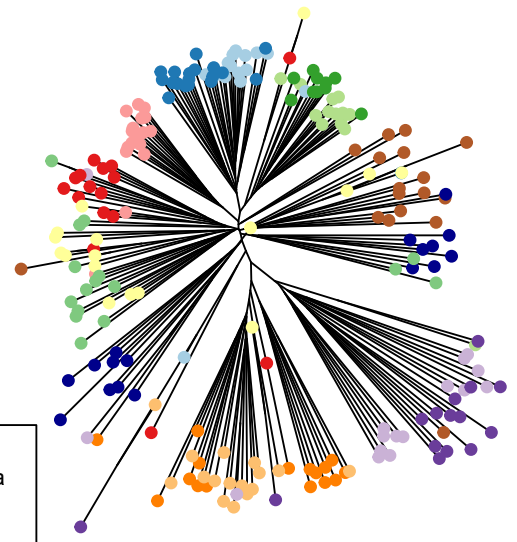
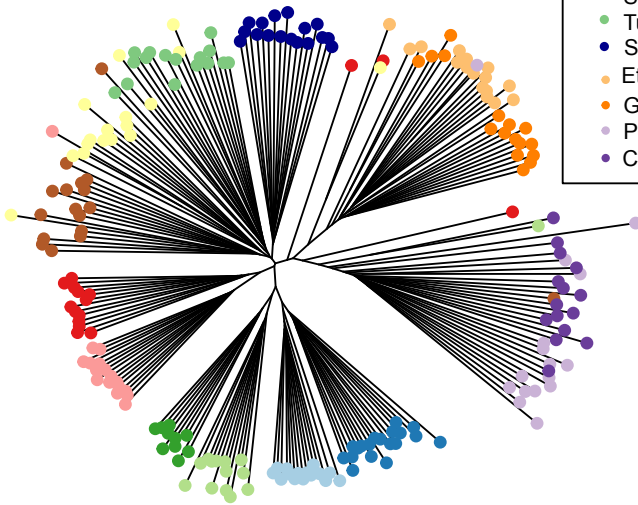


94%

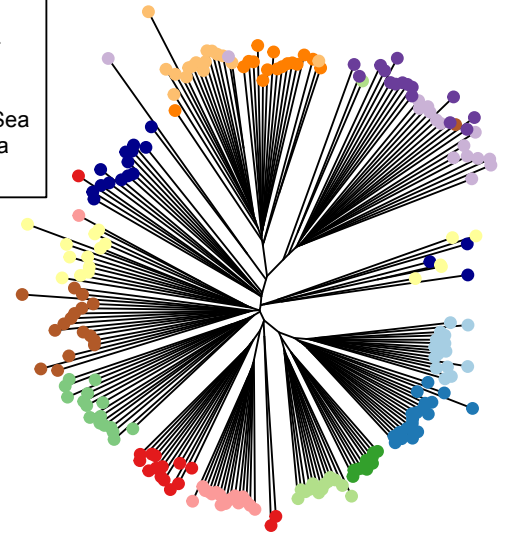


90%

- Tvärminne, Baltic Sea
- Gulf of Gdansk, Baltic Sea
- Sylt, North Sea
- Lake Verre, North Sea
- Arcachon Bay, Atlantic
- Ria Formosa, Atlantic
- Berre Lagoon, Western Med.
- Sardinia, Western Med.
- Tunis Bay, Western Med.
- Sicily, Western Med.
- Etolikon, Ionian Sea
- Gialova Lagoon, Ionian Sea
- Porto Lagos, Aegean Sea
- Constanta, Black Sea



85%



80%