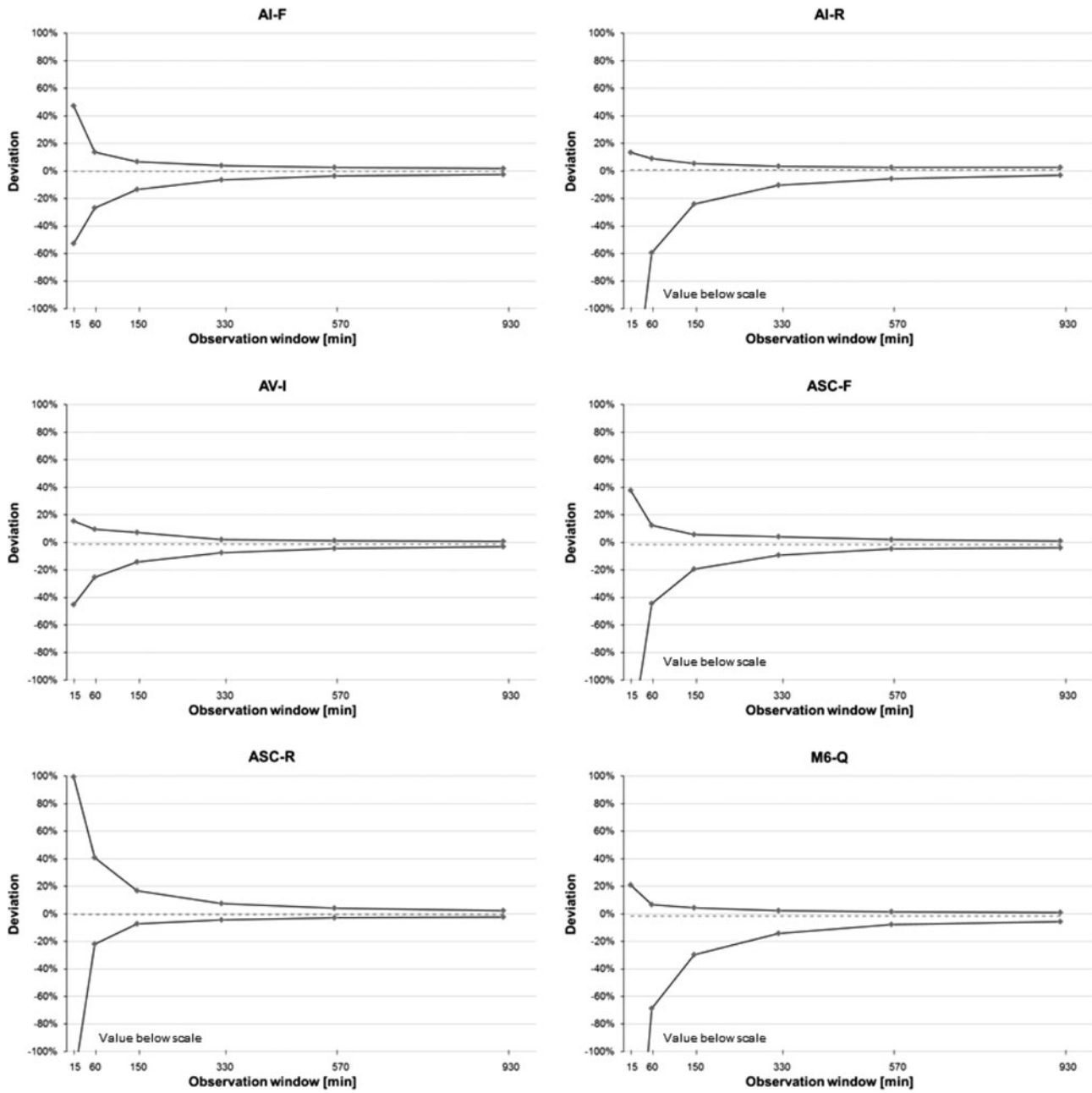
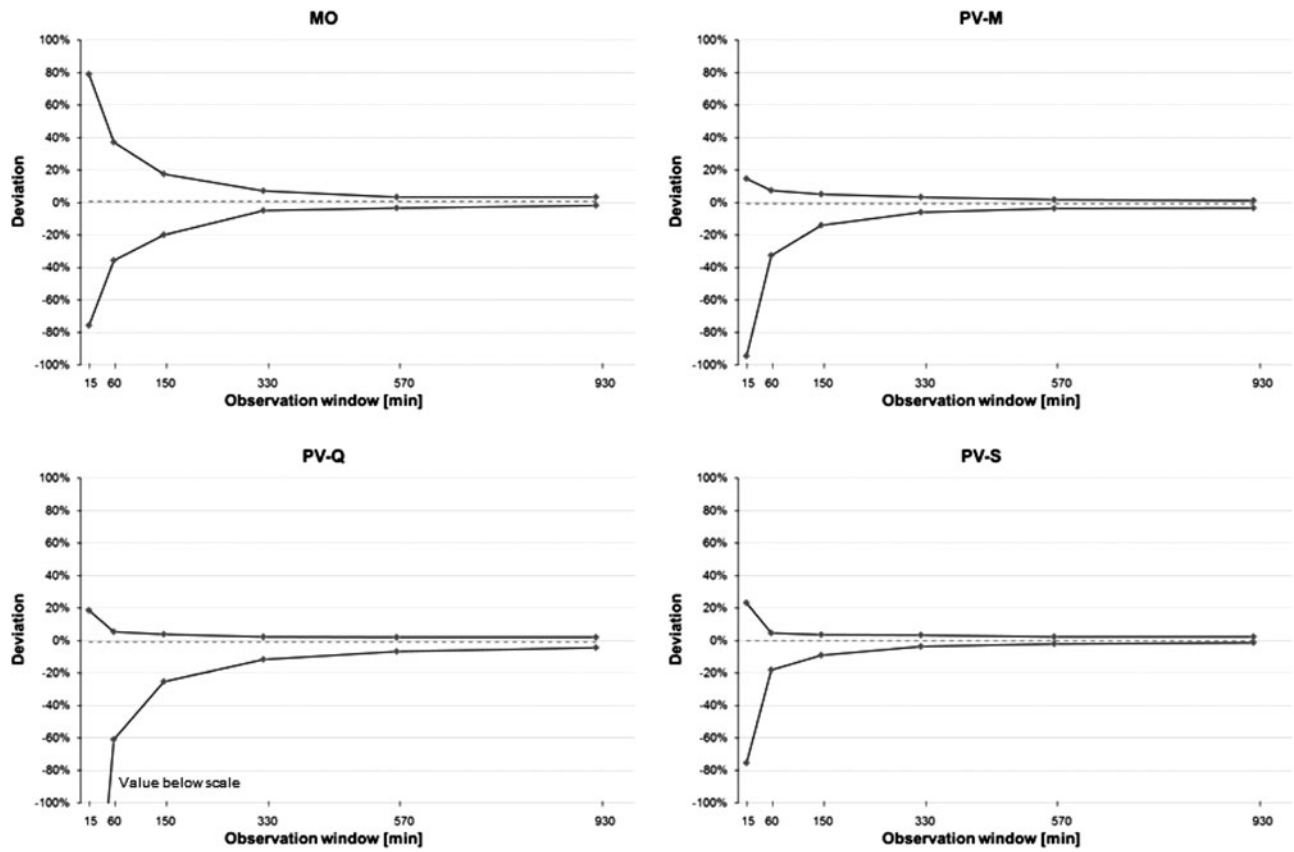


Supplementary Data



SUPPLEMENTARY FIG. S1. (Continued next page).



SUPPLEMENTARY FIG. S1. Trumpet curves according to IEC 60601-2-24 (first 24 h excluded) for a basal rate of 1 U/h. Connected dots show the minimal and maximal deviation of the nine data sets per insulin pump system within each observation window. Dotted lines show the total deviation for hours 25–72.