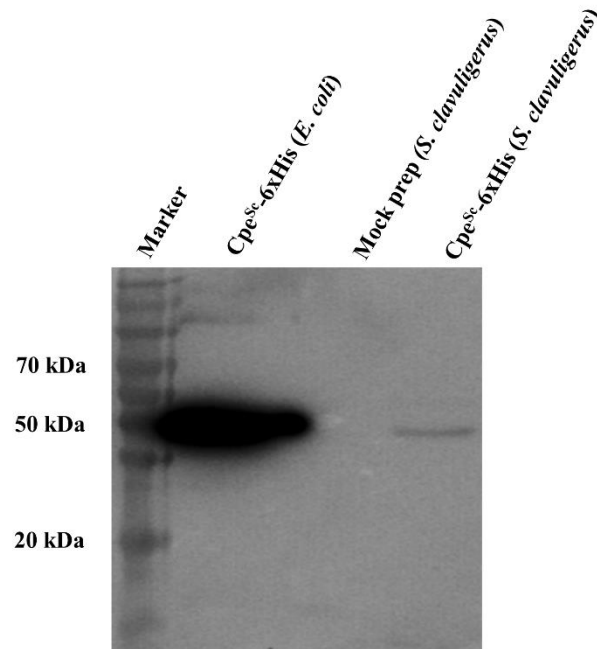


**S1 Fig.**

**S1 Fig.** Western blot analysis of C-terminal 6×His tagged Cpe (Cpe<sup>Sc-6×His</sup>) expressed and purified from *E. coli* (using pET 30b-*cpe*<sup>Sc</sup>) or expressed in *Streptomyces clavuligerus* (using pHM:*cpe*<sup>Sc-6×his</sup>). Purified protein (*E. coli*) or cell free lysates (*S. clavuligerus*) were used in the analysis along with anti-6×His antibodies for detecting epitope-tagged Cpe. The lane labeled as “Mock prep” contains *S. clavuligerus* pHM11a empty vector lysate as control to account for any non-specific antibody binding. The size of the band corresponding to Cpe<sup>Sc-6×His</sup> in all lanes was approximately 50-55 kDa, and the prestained protein ladder (Marker) was used as a reference for estimating molecular weights during 12% SDS-PAGE.