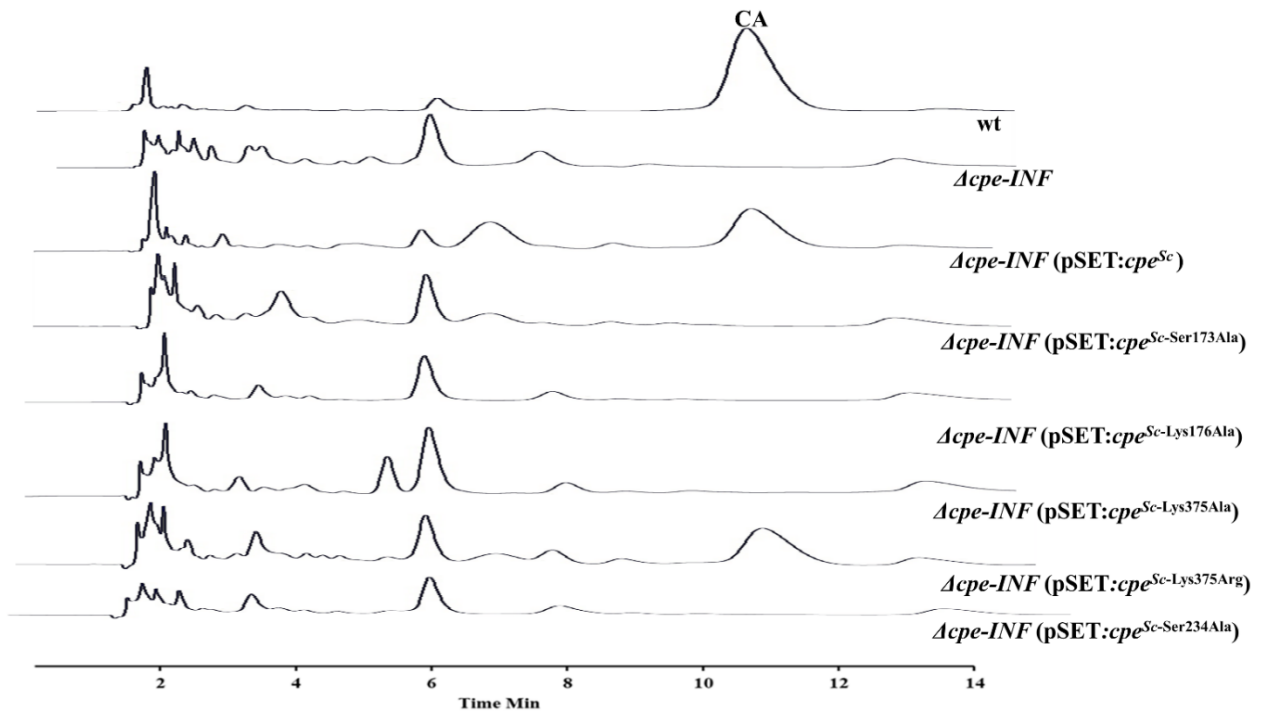


S6 Fig.



S6 Fig. HPLC analysis of 96 hour *S. clavuligerus* SA culture supernatants from the wt strain for comparison with the $\Delta cpe-INT$ mutant expressing Cpe^{Sc} or select single amino acid variants (Ser₁₇₃Ala, Lys₁₇₆Ala, Lys₃₇₅Ala, Lys₃₇₅Arg Ser₂₃₄Ala) of the protein *in trans* using plasmid pHM11a. Clavulanic acid (CA) production was monitored at 311nm following imidazole derivatization.