

Table S1. Clinical characteristics of patients.

Characteristics	Men	Women
Number of patients	30	
	16	14
Age, years	52,8±14,6	
	52,2±15,9	53,4±12,8
Hypertension, n (%)	13 (43,3%)	
Carbohydrate metabolism disorders, n (%)	0 (0%)	
Dyslipidemia, n (%)	0 (0%)	
Obesity, n (%)	0 (0%)	
BMI, kg/m ²	23,4±2,3	
	23,1±1,8	23,7±2,7
Smoker, n (%)	5 (16,7%)	

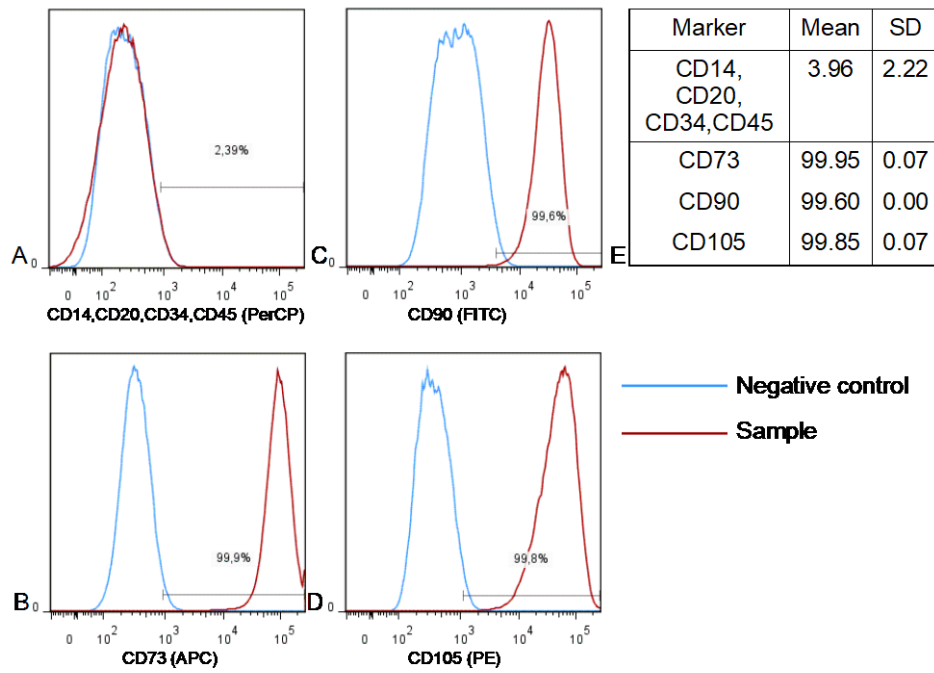


Figure S1. Phenotypic characterization of adipose-derived MSC. Flow cytometric analysis was performed as described in “Materials and Methods”. A – analysis of CD14, CD20, CD34, CD45 expression (PerCP); B – CD73 (APC); C – CD90 (FITC); D – CD105 (PE). E – Average percent and SD of cells stained positive for the markers. The results from 2 donors were presented in the table.

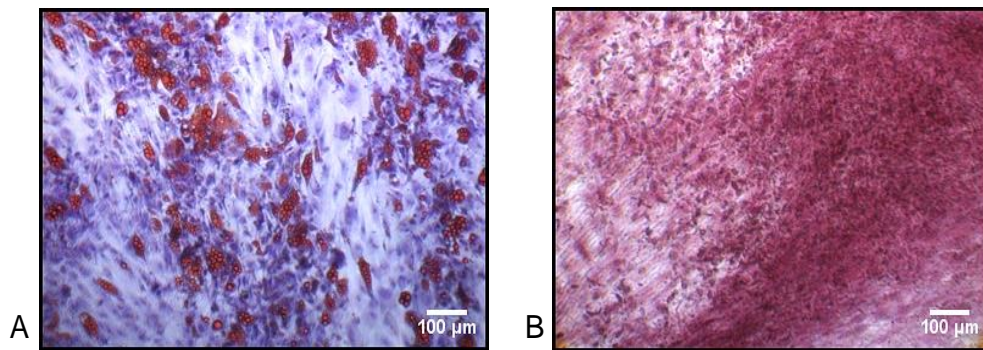


Figure S2. Adipogenic (A) and osteogenic (B) differentiation of human adipose-derived MSC. Scalebars mark 100 μm.