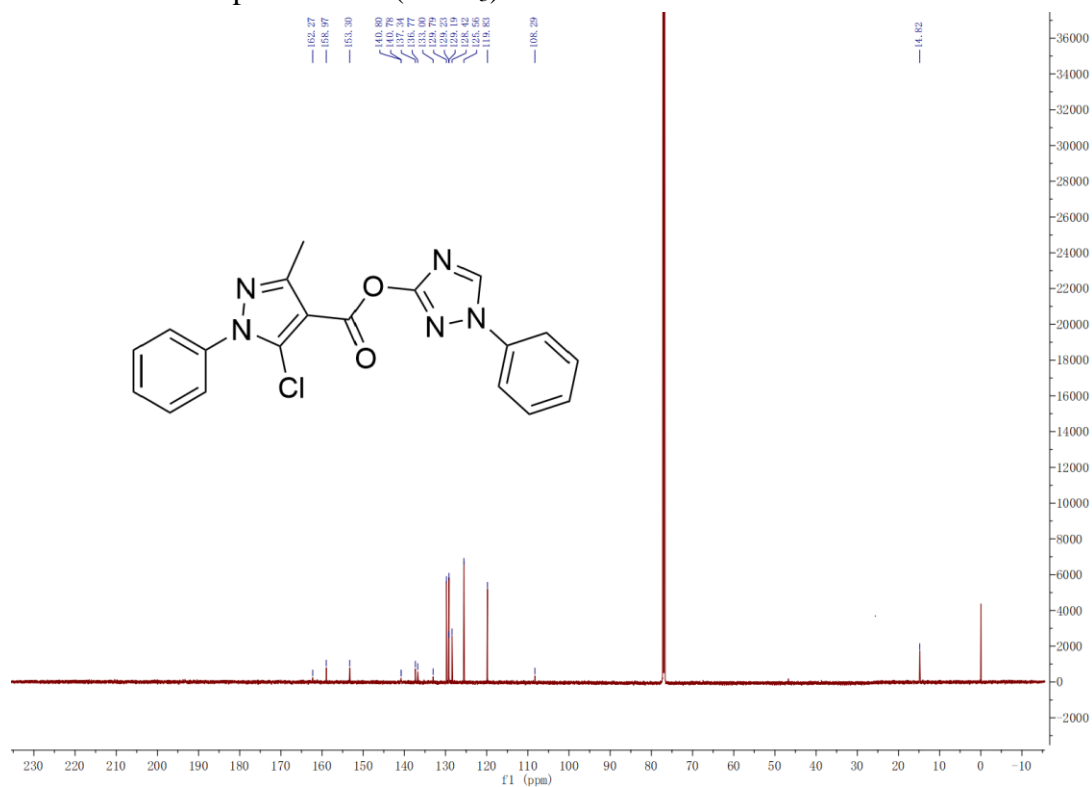
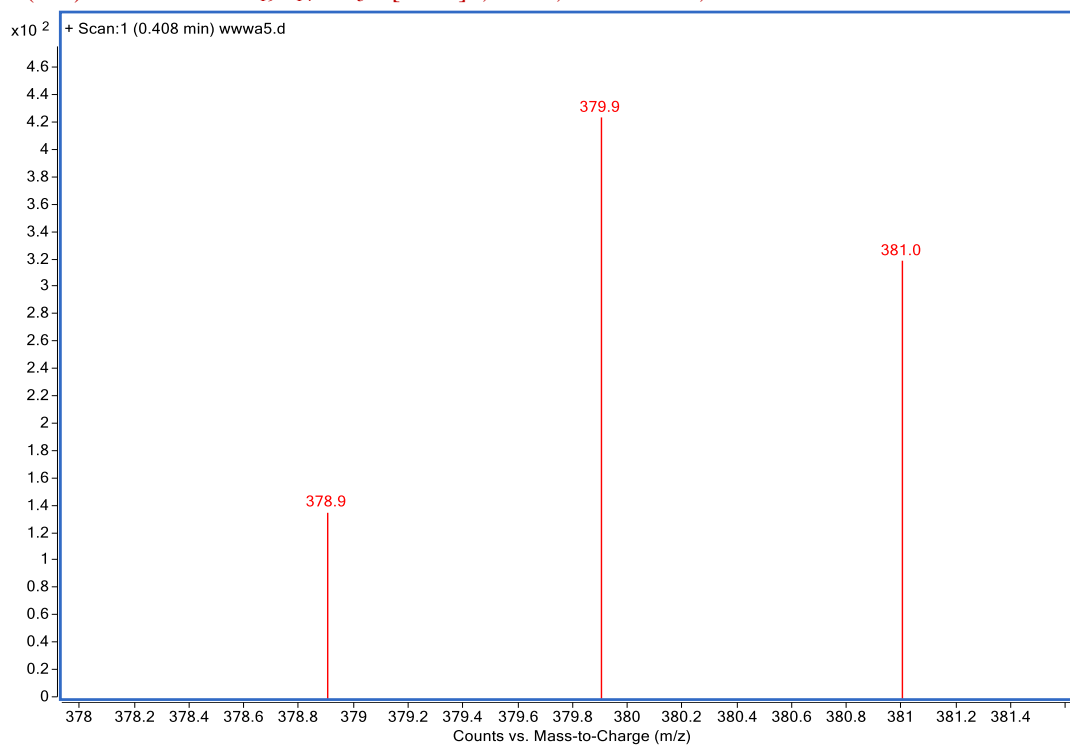


4a

^{13}C NMR of compound of 4a (CDCl_3)

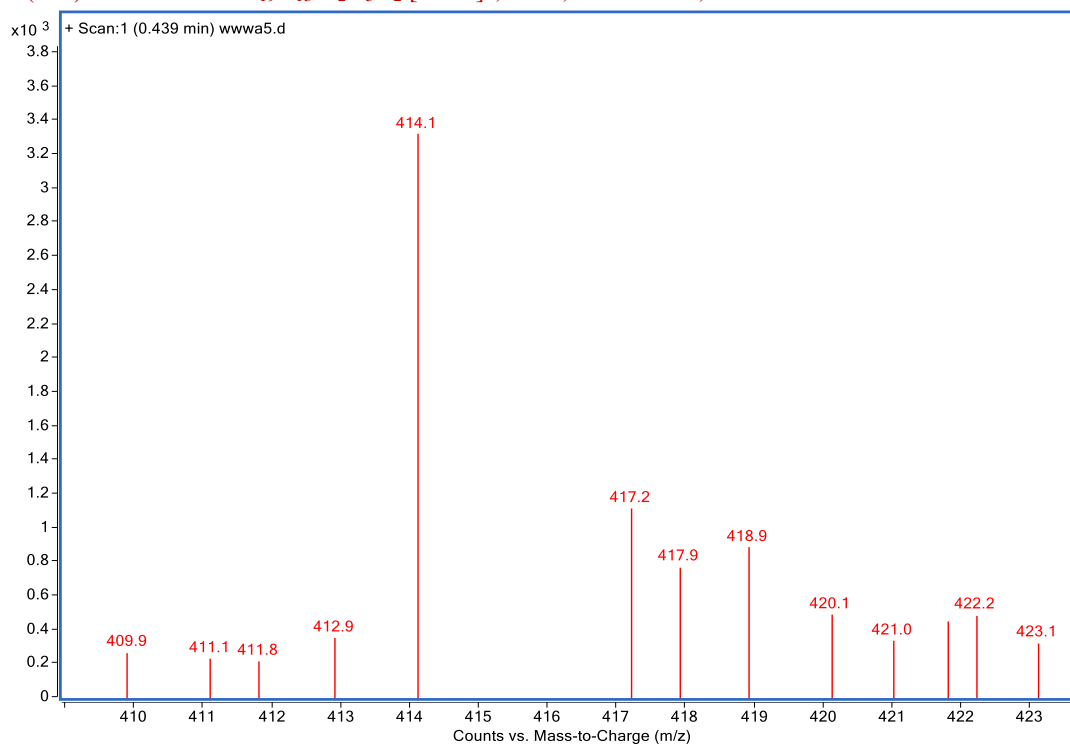


MS (ESI) calculated for $\text{C}_{19}\text{H}_{14}\text{ClN}_5\text{O}$ $[\text{M}+\text{H}]^+$, 380.1, found 379.9;

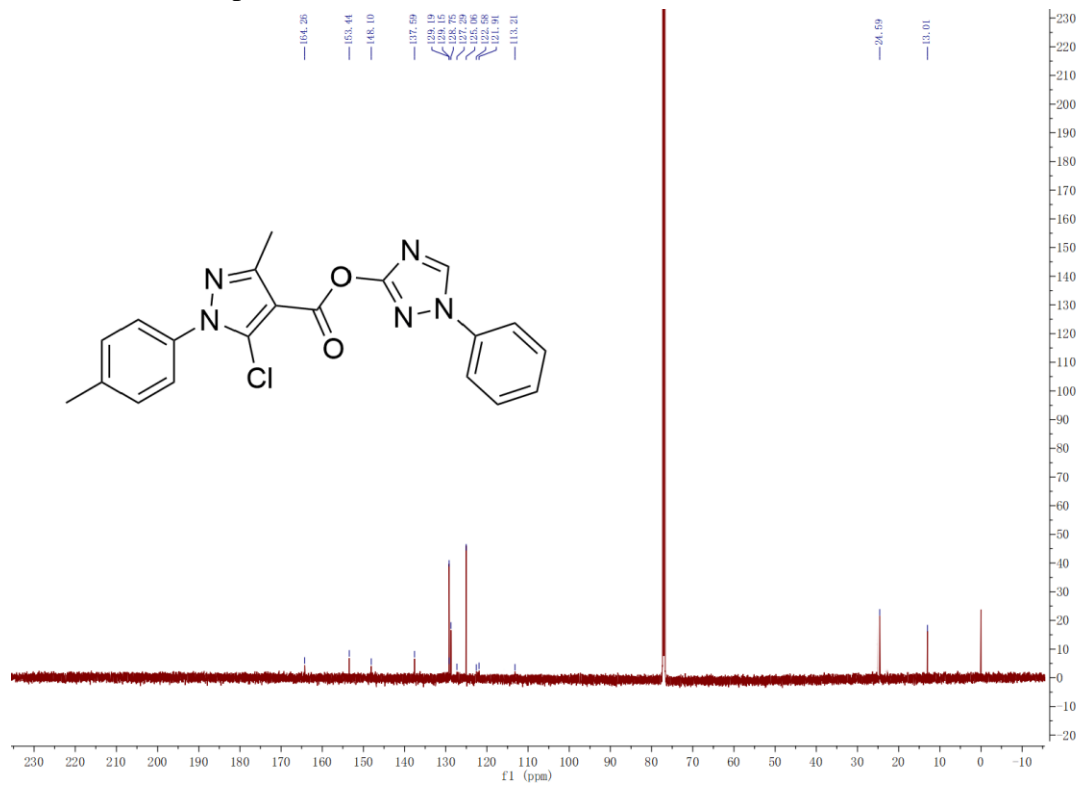


4c

MS (ESI) calculated for $C_{19}H_{13}Cl_2N_5O_2 [M+H]^+$, 414.1, found 414.1;

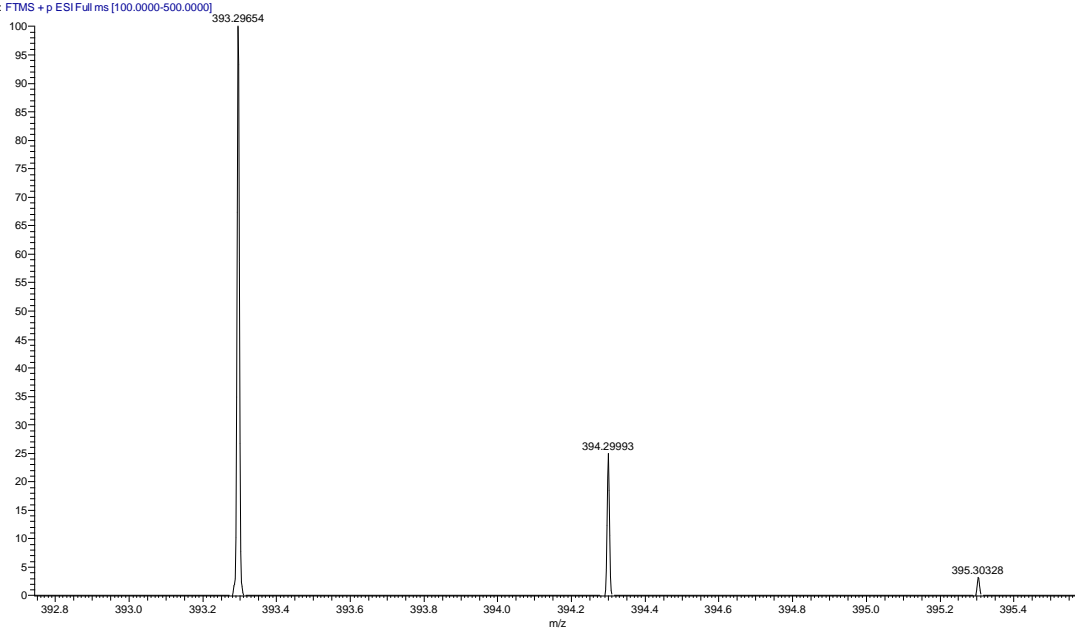


^{13}C NMR of compound of 4d (CDCl_3)



HRMS of compound of 4d

Sample #39 RT: 0.17 AV: 1 NL: 9.60E6
T: FTMS + p ESI Full ms [100.0000-500.0000]



4k

^{13}C NMR of compound 4k (CDCl_3)



MS (ESI) calculated for $\text{C}_{20}\text{H}_{16}\text{ClN}_5\text{O}_2$ $[\text{M}+\text{H}]^+$, 395.1, found 395.1;

