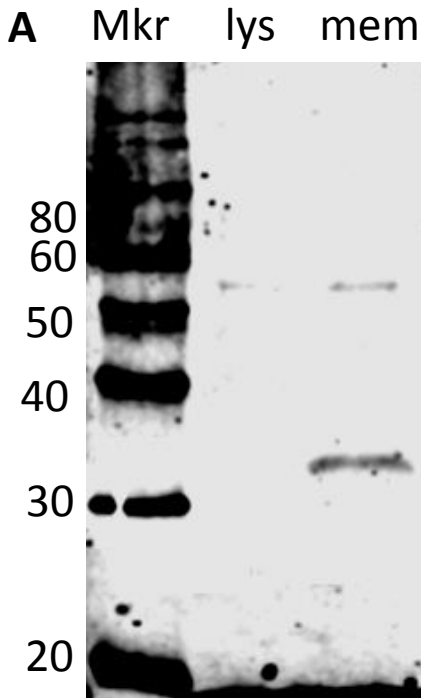


Supplementary Fig.1



Characteristics of Pgrmc1 and mPR α antibodies used in proximity ligation assay (A,B, C). Western blot analyses of zebrafish ovarian membrane (mem) and lysate (lys) with an antibody (1:1000) generated in mice against a peptide sequence in zebrafish Pgrmc1 (A) and an antibody (1:2000) generated in rabbits against a peptide sequences in zebrafish mPR α (B,C). Results of preincubation with the peptide antigen are shown in (C).

