

Figure A4: Graphical representation of scenarios S1 to S12: no conflict in terms of survival distributions - Weibull survival distribution for the historical control and the new trial data. Black curves represent the Kaplan-Meier EFS of hypothetical historical control survival data, colored curves represent EFS distribution in the control (plain line) and experimental (dashed line) arm of the new trial

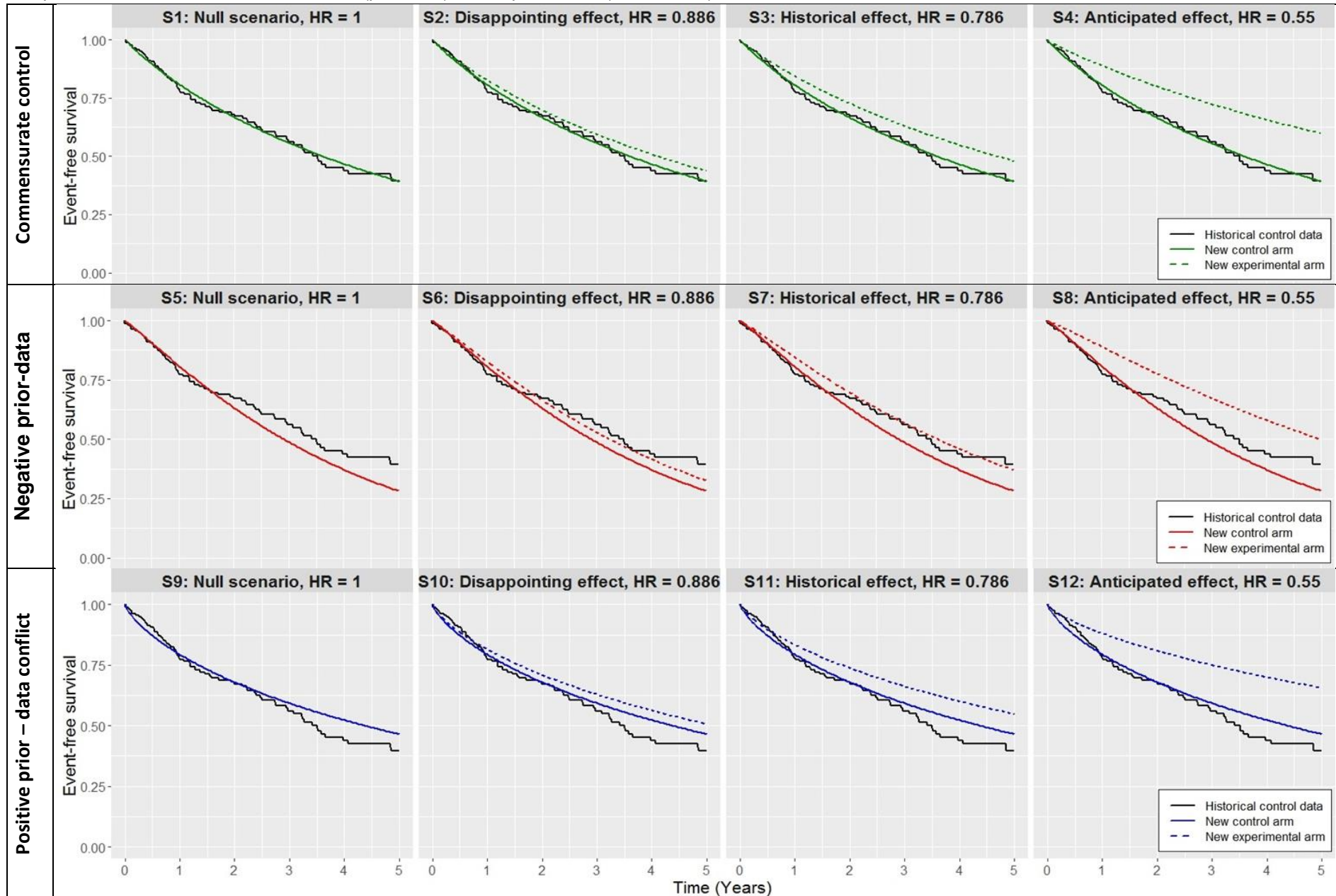


Figure A5: Graphical representations of scenarios S13 to S24: no conflict in terms of survival distribution - Piecewise exponential survival distribution for the historical control and the new trial data. Black curves represent the Kaplan-Meier EFS of hypothetical historical control survival data, colored curves represent EFS distribution in the control (plain line) and experimental (dashed line) arm of the new trial

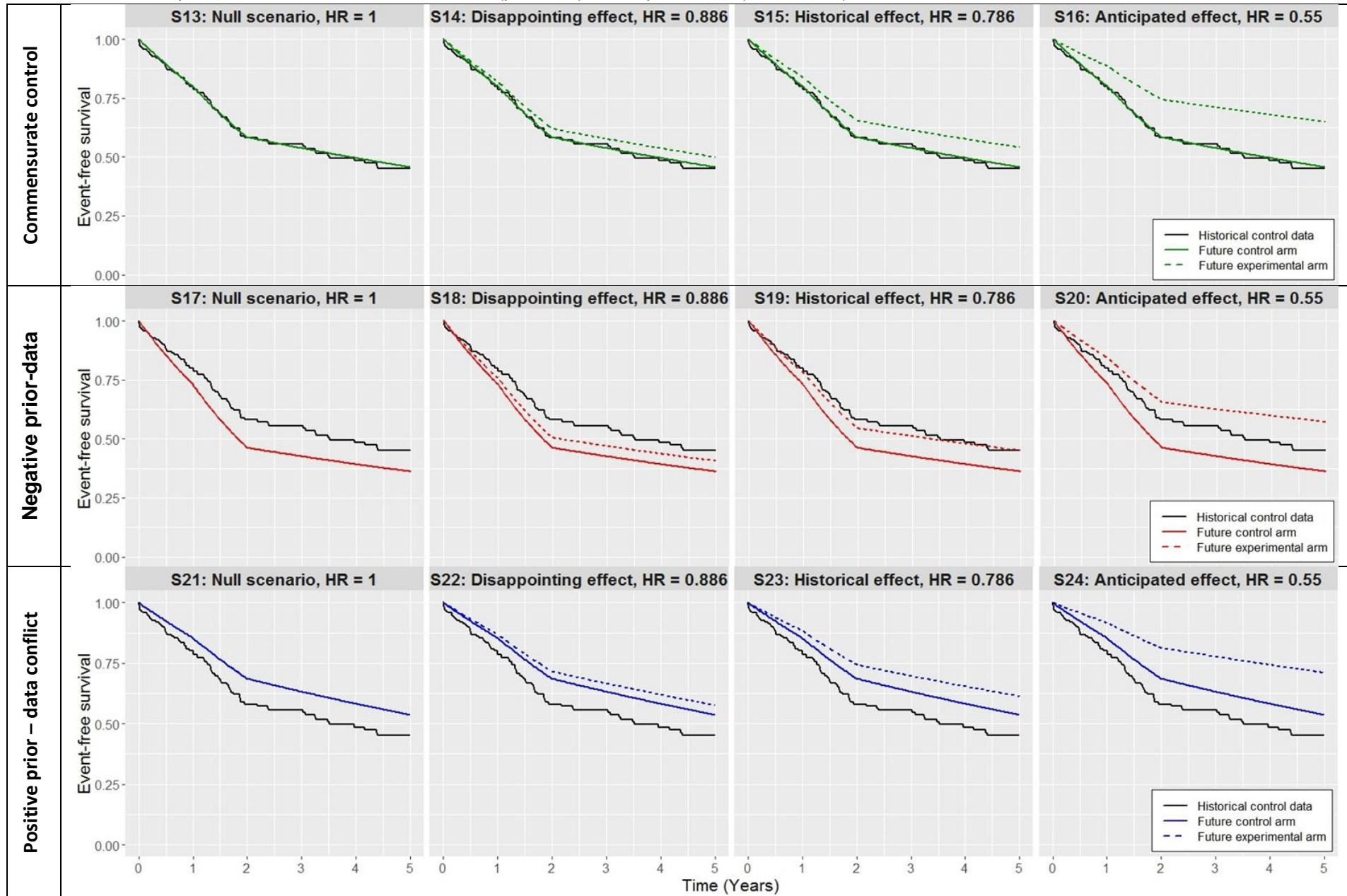


Figure A6: Graphical representations of scenarios S25 to S32: conflict in terms of survival distribution between historical and new trial data. Black curves represent the Kaplan-Meier EFS of hypothetical historical control survival data, colored curves represent EFS distribution in the control (plain line) and experimental (dashed line) arm of the new trial

