

Table S1. Genes selected and primer used for DRaCALA experiment

| Gene product | Putative function | Oligonucleotide Sequence |
|---------------------|------------------------------|---|
| <i>kupA</i> | Potassium transporter | (F) AAAGGATCCATGGGTTATGAATCTAATCGCTC (R) TTTGTCGACTTATGATTCTCCTTGATTTTCTTCTG |
| <i>kupB</i> | Potassium transporter | (F) AAAGGATCCCGTGGGTCAAGTACACTTACATAA (R) TTTGTCGACTTAATGAGTTGCTGAAGCTTCT |
| <i>lysP</i> | Lysine specific permease | (F) AAAGTCGACTTGAGTCTGAGTCAAACAAGTC (R) TTTAAGCTTTTAATCTTTATGACGACTTAAATCAACC |
| <i>lysQ</i> | Lysine specific permease | (F) AAAGGATCCATGGAAAATCAAAATCAGGTCAAG (R) TTTAAGCTTTTATTTTTCCCGACTCAAATCTACT |
| <i>yncB</i> | Uncharacterized protein | (F) AAAGGATCCATGAACTTATTA AAAACAAACTGGGA (R) TTTAAGCTTTTATTTTTCATAATTTATCTAAAATCTCCATTTT |
| <i>oppA</i> | Oligopeptide-binding protein | (F) TTTGGATCCATGAAAAAATTA AAAAGTAACTTTATTGGCA (R) AAAAAGCTTCTATTTGGTTGCCATCTTATCAGA |

| | | |
|-------------|---------------------------|---|
| <i>yrbD</i> | voltage gated channel | (F) TTT <u>GGATCC</u> ATGAAATTA AAA GATATAGAGAAATCAACAAA |
| | | (R) AAAA <u>AAGCTT</u> TTTTATTTTTTCATTTAAACCTGACGAAG |
| <i>yjdJ</i> | Potassium channel protein | (F) AAAG <u>GATCC</u> ATGTTTGAAAGTTTAATCGCTC |
| | | (R) TTTA <u>AAGCTT</u> TCATTTATTTTTCTATTATTTTCCTTCTAAGG |

(F) forward

(R) reverse

Underline restriction sites GGATCC (BamHI) and AAGCTT (HindIII)

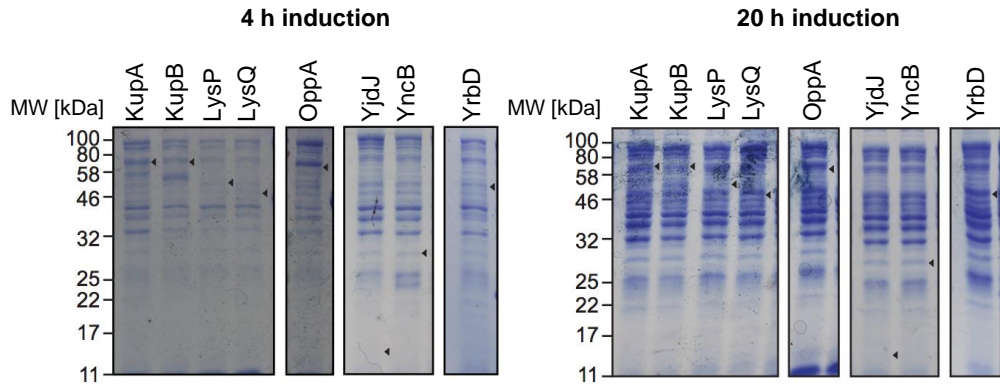


Figure S1: SDS PAGE of lysates from *E. coli* BL21 induced with 1 mM IPTG for either 4 or 20 hours. Black arrows point to positions corresponding to the indicated proteins' molecular weight (MW). IPTG-inducible expression was achieved by cloning the corresponding genes into the expression vector pWH844.

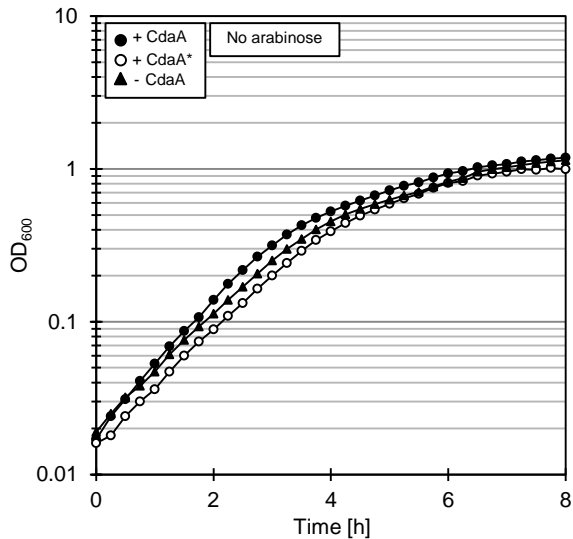
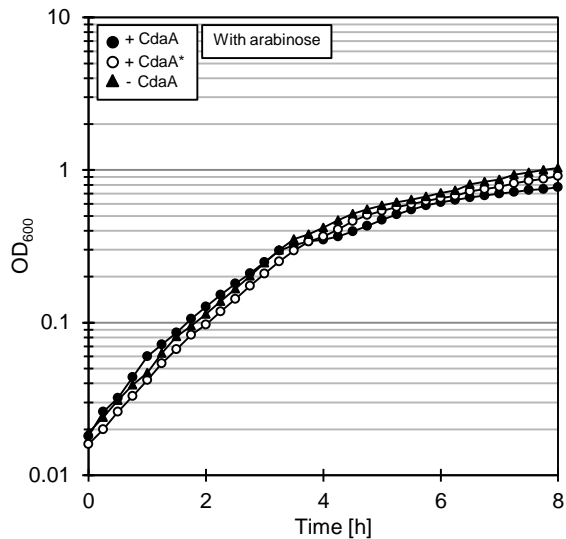
A**B**

Figure S2: *E. coli* LB2003 carrying the relevant plasmids was cultivated in minimal salt M9mod media containing 50 mM KCl without arabinose (left) or with 0.005% L-arabinose (right) for induction of the *cdaA* alleles. A, B. The strain carried the plasmids pBP370 (CdaA), pBP373 (CdaA*), or pBAD33 (empty vector control).