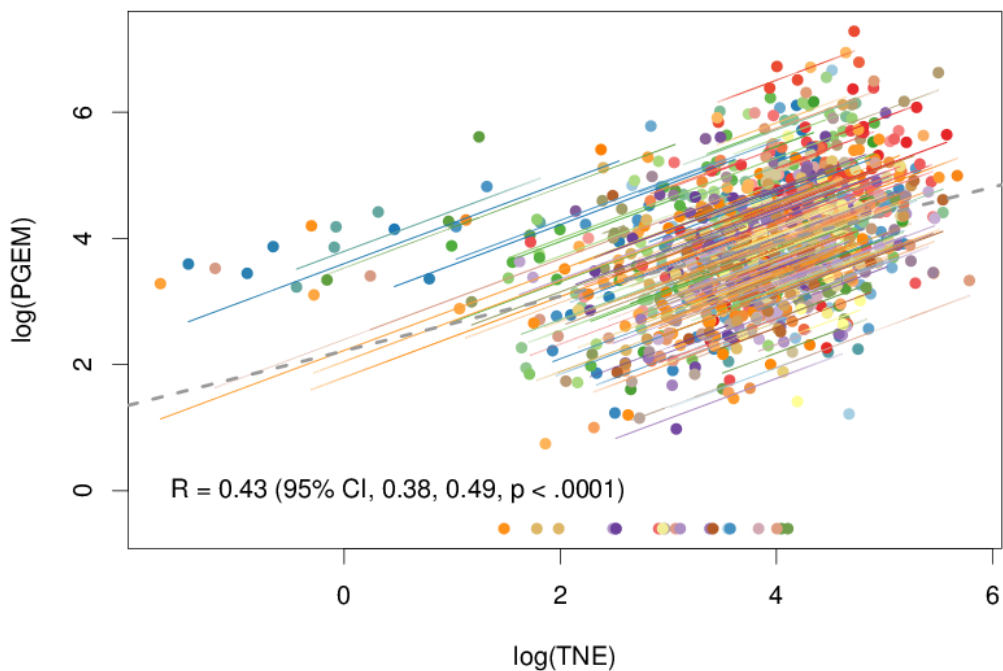


S5 Supporting Information. Correlation between log PGE-M and log TNE.

Correlation between log PGE-M (pmol/mL) and log TNE (nmol/mL)

R=0.43 (95% CI, 0.38, 0.49, p<.0001).



Reference

Hankinson SE, Manson JE, Spiegelman D, Willett WC, Longcope C, and Speizer FE. (1995). Reproducibility of plasma hormone levels in postmenopausal women over a 2-3-year period. *Cancer Epidemiology, Biomarkers & Prevention*, 4: 649-654.

Hertzmark E and Spiegelman D. (2010). The SAS ICC9 macro. <https://www.hsph.harvard.edu/donna-spiegelman/software/icc9/>

(If the 95% CI of CV is needed, then need the following reference)

Bland JM, Altman DG. (1996). Measurement error proportional to the mean. *BMJ*, 313:106-106.

Bland JM. How should I calculate a within-subject coefficient of variation? <https://www-users.york.ac.uk/~mb55/meas/cv.htm> (accessed on January 23, 2018).

Bakdash JZ and Marusich LR. (2017). Repeated measures correlation. *Front Psychol*. 2017; 8: 456.