

## **Supplementary Information for:**

### **SNAP-25 isoforms differently regulate synaptic transmission and long-term synaptic plasticity at central synapses**

Muhammad Irfan<sup>1\*</sup>, Katisha R. Gopaul<sup>2\*</sup>, Omid Miry<sup>2</sup>, Tomas Hökfelt<sup>3</sup>, Patric K. Stanton<sup>2†</sup>, Christina Bark<sup>1†</sup>

<sup>1</sup>The Rolf Luft Research Centre for Diabetes and Endocrinology, Department of Molecular Medicine and Surgery, Karolinska Institutet, 171 76 Stockholm, Sweden

<sup>2</sup>Department of Cell Biology & Anatomy, New York Medical College, Valhalla, NY 10595, USA.

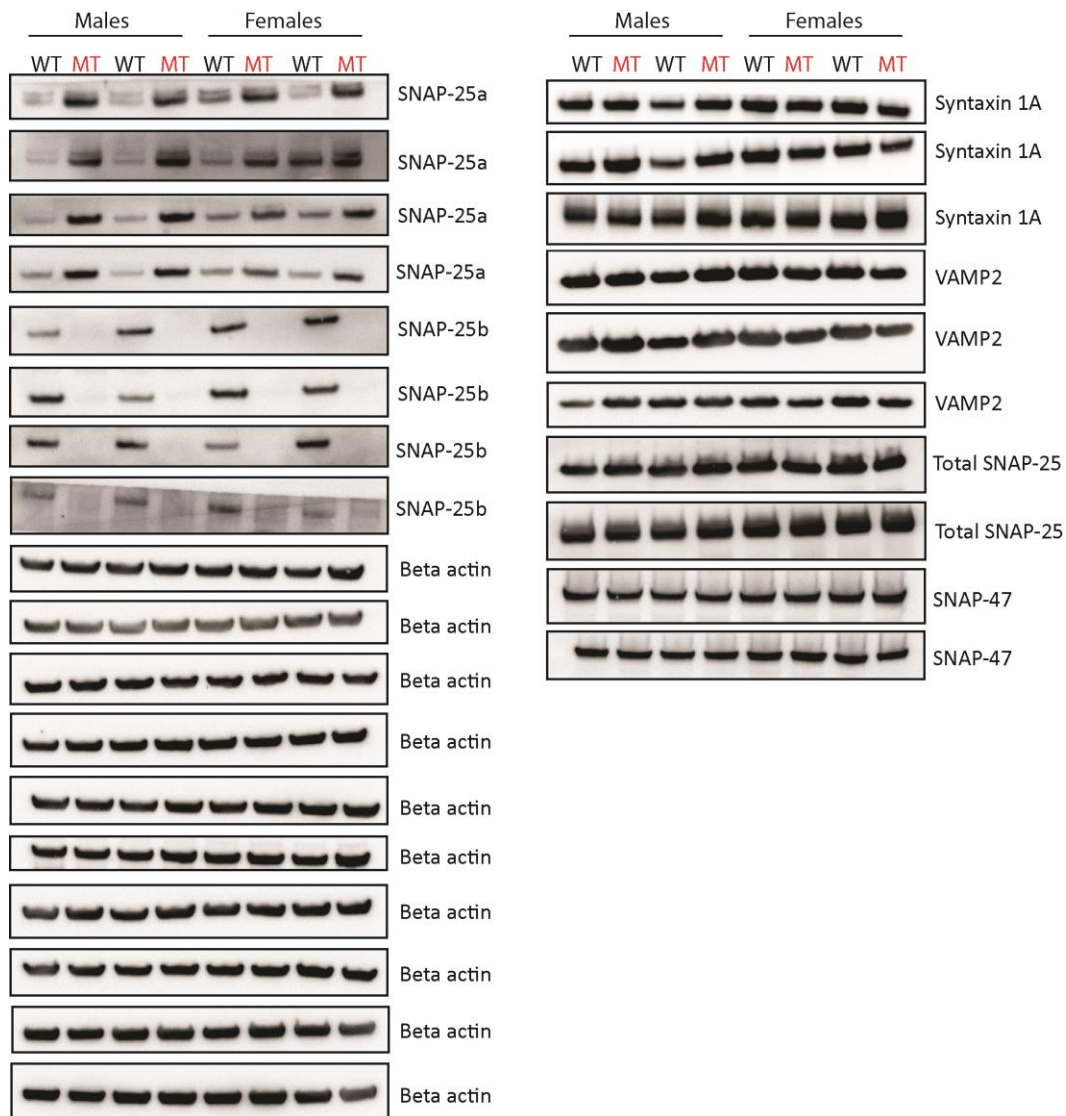
<sup>3</sup>Department of Neuroscience, Karolinska Institutet, 171 77 Stockholm, Sweden

#### **Contents:**

**Supplementary figure 1:** Western blots used in the analyses.

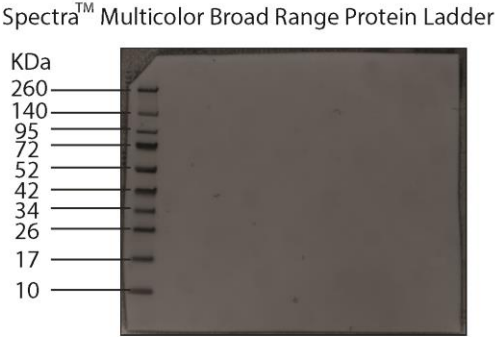
**Supplementary figure 2:** Uncropped chemiluminescent images of Western blots together with their corresponding digital images.

**Supplementary figure 1:** The western blots used in the analysis.

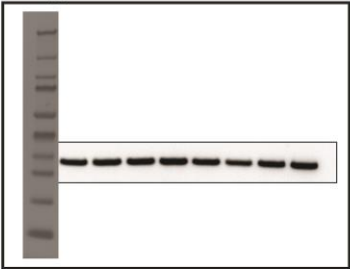


**Supplementary figure 1:** Western blots obtained using SNAP-25a, SNAP-25b, total SNAP-25, Syntaxin 1A, VAMP2, SNAP-47 and beta-actin primary antibodies. For dilutions of each primary antibody and secondary antibodies, see Methods. The analyses of SNAP-25a and SNAP-25b were run on n=4 in duplicates, for total SNAP-25 n=4, for Syntaxin 1A and VAMP2 n=4 (but also in duplicates for n=2), total SNAP-25 and SNAP-47 n=4.

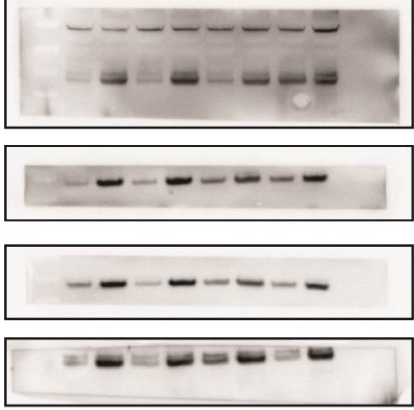
**Supplementary figure 2:** Uncropped chemiluminescent images of the Western blots together with their corresponding digital images.



Trial run to assess where total SNAP-25 blots appeared on the membrane



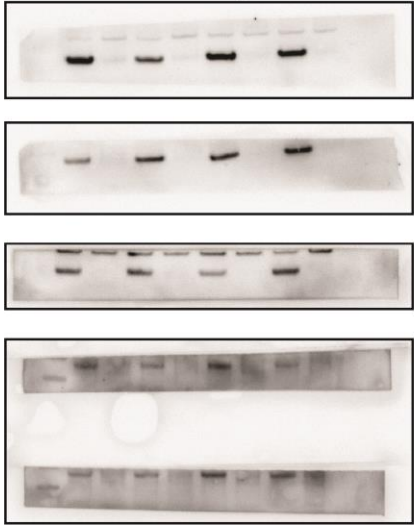
Uncropped chemiluminescent blots of SNAP-25a antibody



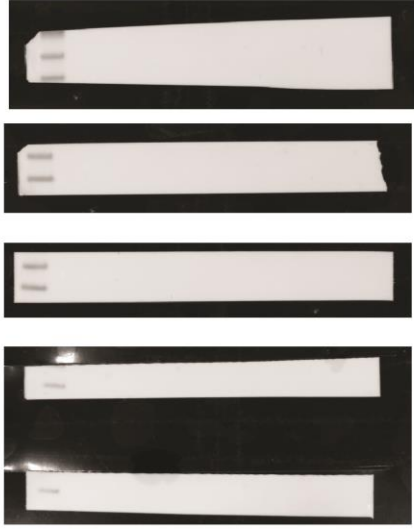
Corresponding digital image



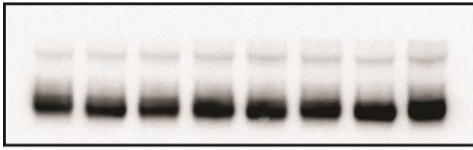
Uncropped chemiluminescent blots of SNAP-25b antibody



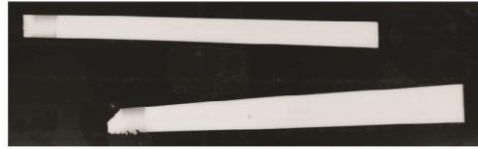
Corresponding digital image



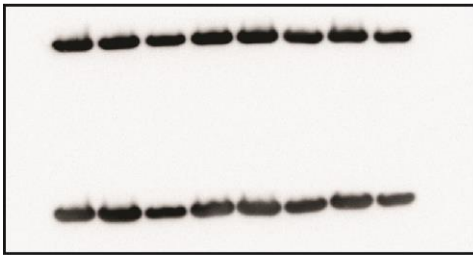
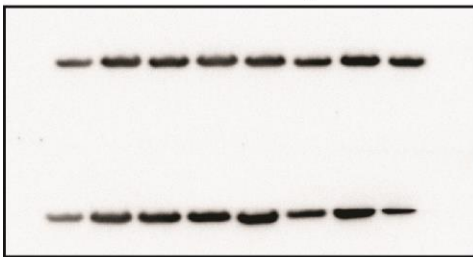
uncropped chemiluminescent blots for  
syntaxin 1A antibody



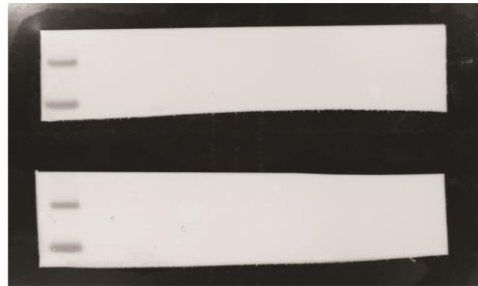
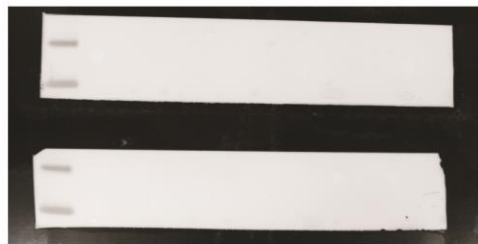
corresponding digital image



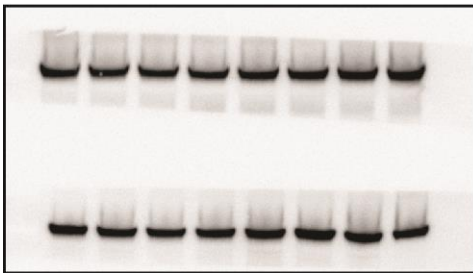
uncropped chemiluminescent blots for  
VAMP2 antibody



corresponding digital image



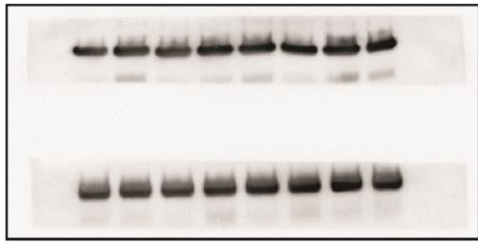
uncropped chemiluminescent blots for  
SNAP-47 antibody



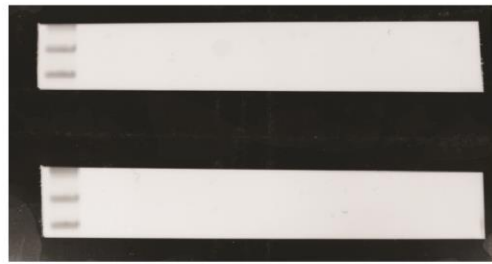
corresponding digital image



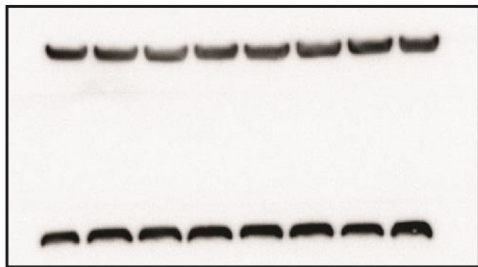
uncropped chemiluminescent blots for total SNAP-25 antibody



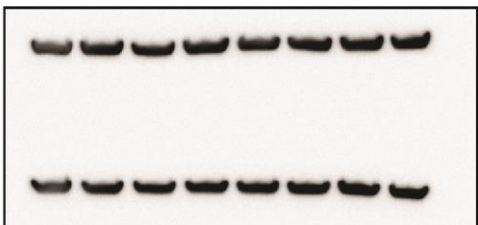
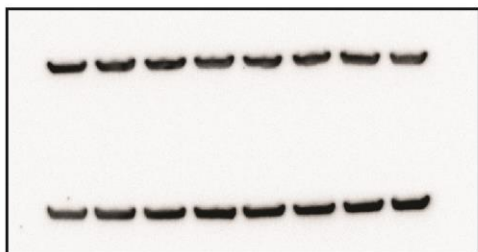
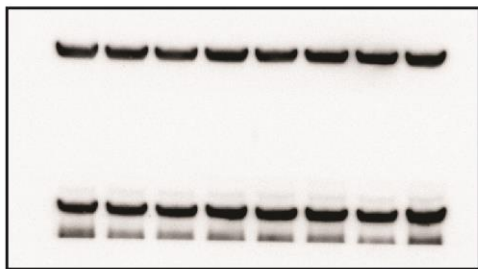
corresponding digital image



uncropped chemiluminescent blots for Beta actin antibody



corresponding digital image



**Supplementary figure 2:** Uncropped chemiluminescent images of all the Western blots together with their corresponding digital images as acquired.