

Solid-phase microextraction and on-fiber derivatization for assessment of mammalian and vegetable milks with emphasis on the content of major phytoestrogens

Antonella Aresta, Pietro Cotugno and Carlo Zambonin.

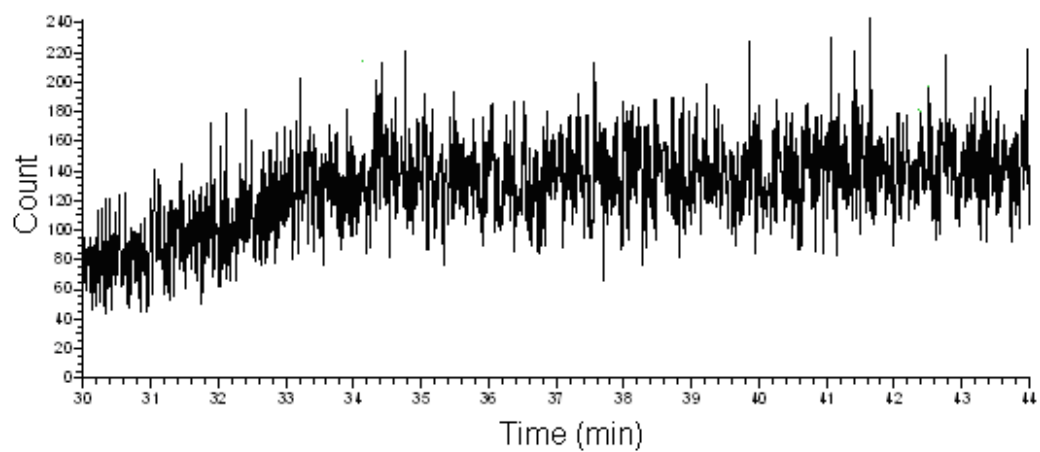


Fig 1S. GC-MS XICs (time window 29-49 min) relevant to the analysis of β -glucuronidase from almonds.