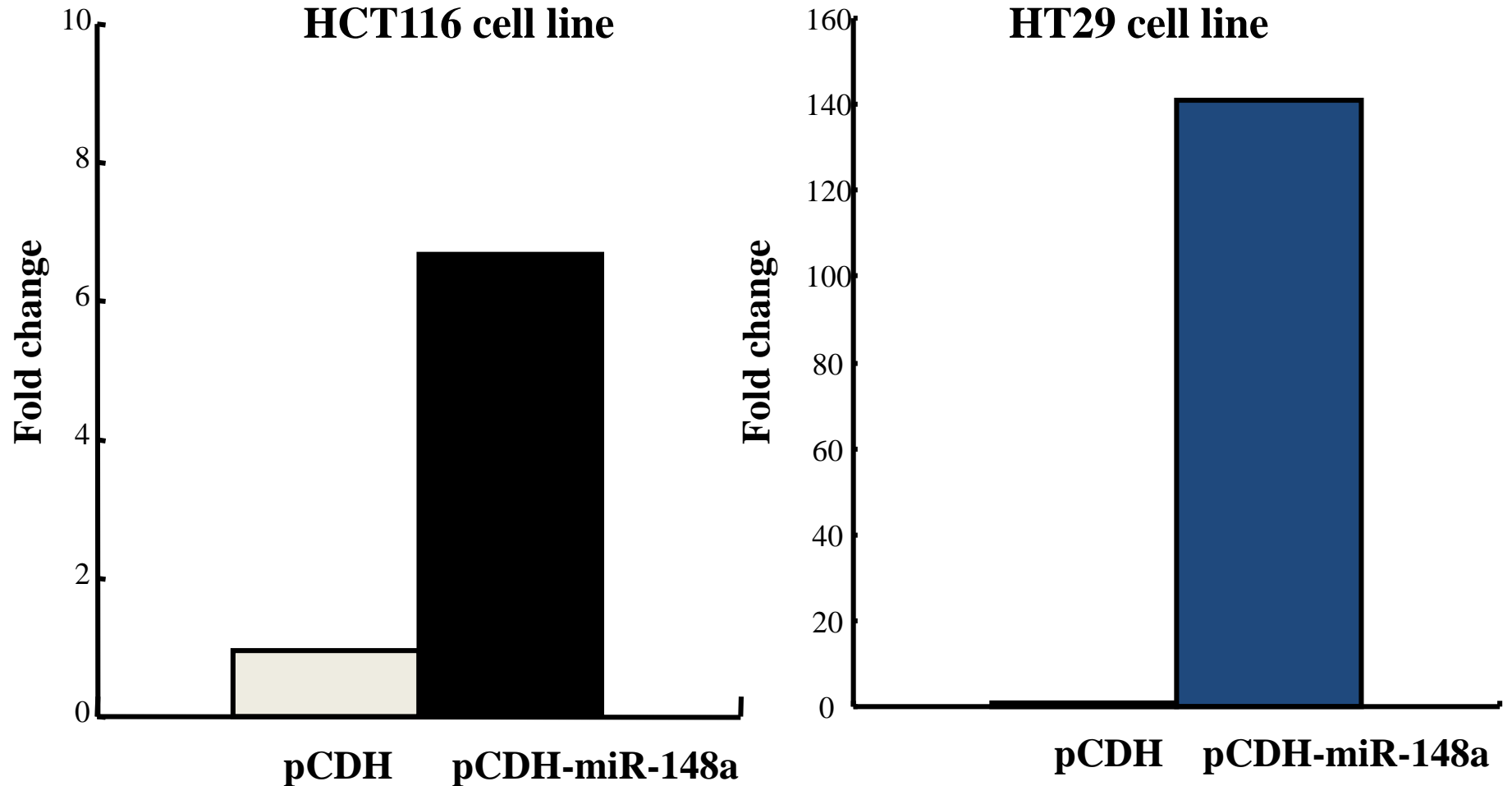


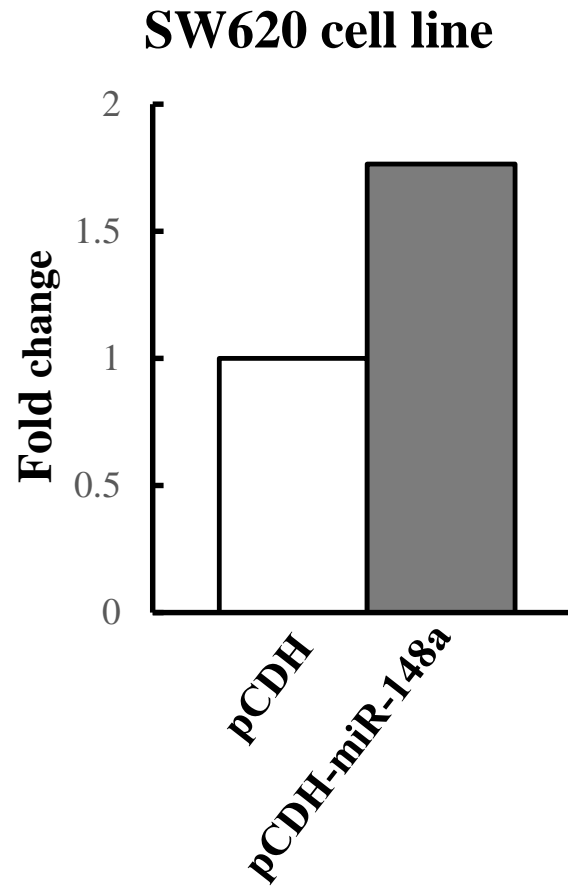
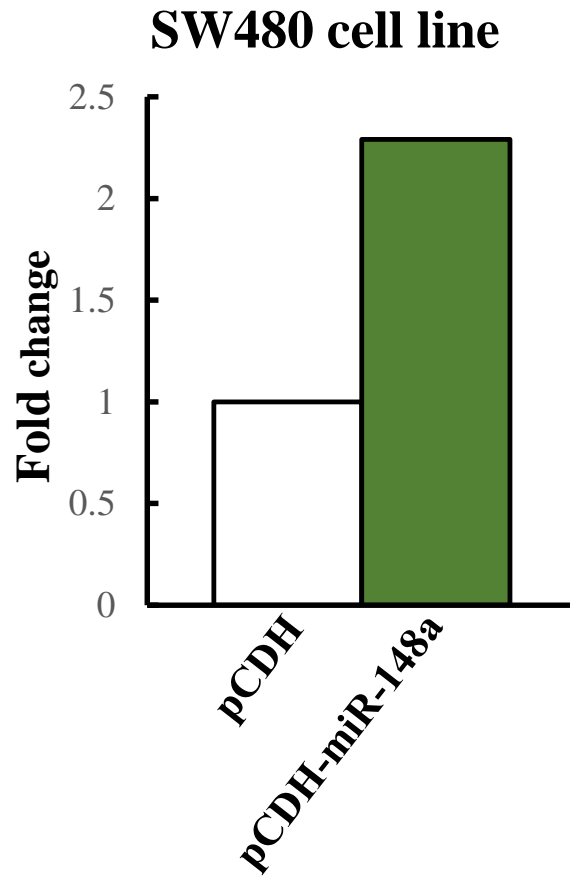
Supplementary Figure 1A

miR-148a level after pCDH-*miR-148a* vector transfected into HCT116 and HT29



Supplementary Figure 1B

miR-148a level after pCDH-*miR-148a* vector transfected into SW480, SW620, and Caco-2



Caco-2 cell line

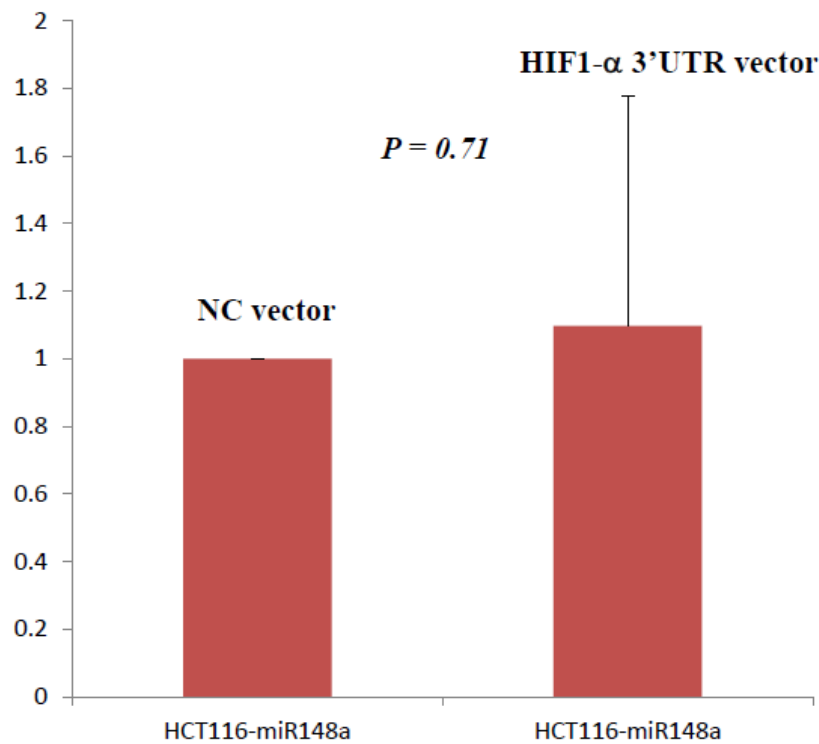
pCDH-*miR-148a* vector transfected into Caco-2 cell line was not successfully performed. Therefore, constant *miR-148a* level in transfected Caco-2 was not determined.

Supplementary Figure 2

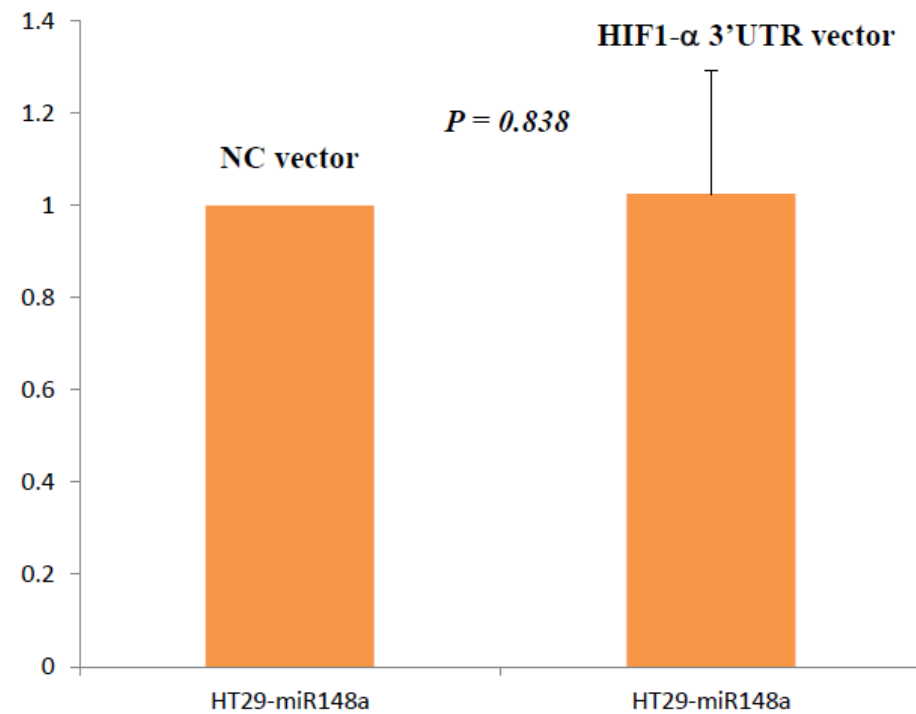
miR-148a indirectly inhibits the HIF-1 α by luciferase assay in HCT116 and HT29 cell lines

Reporter assay (Luciferase assay):

A

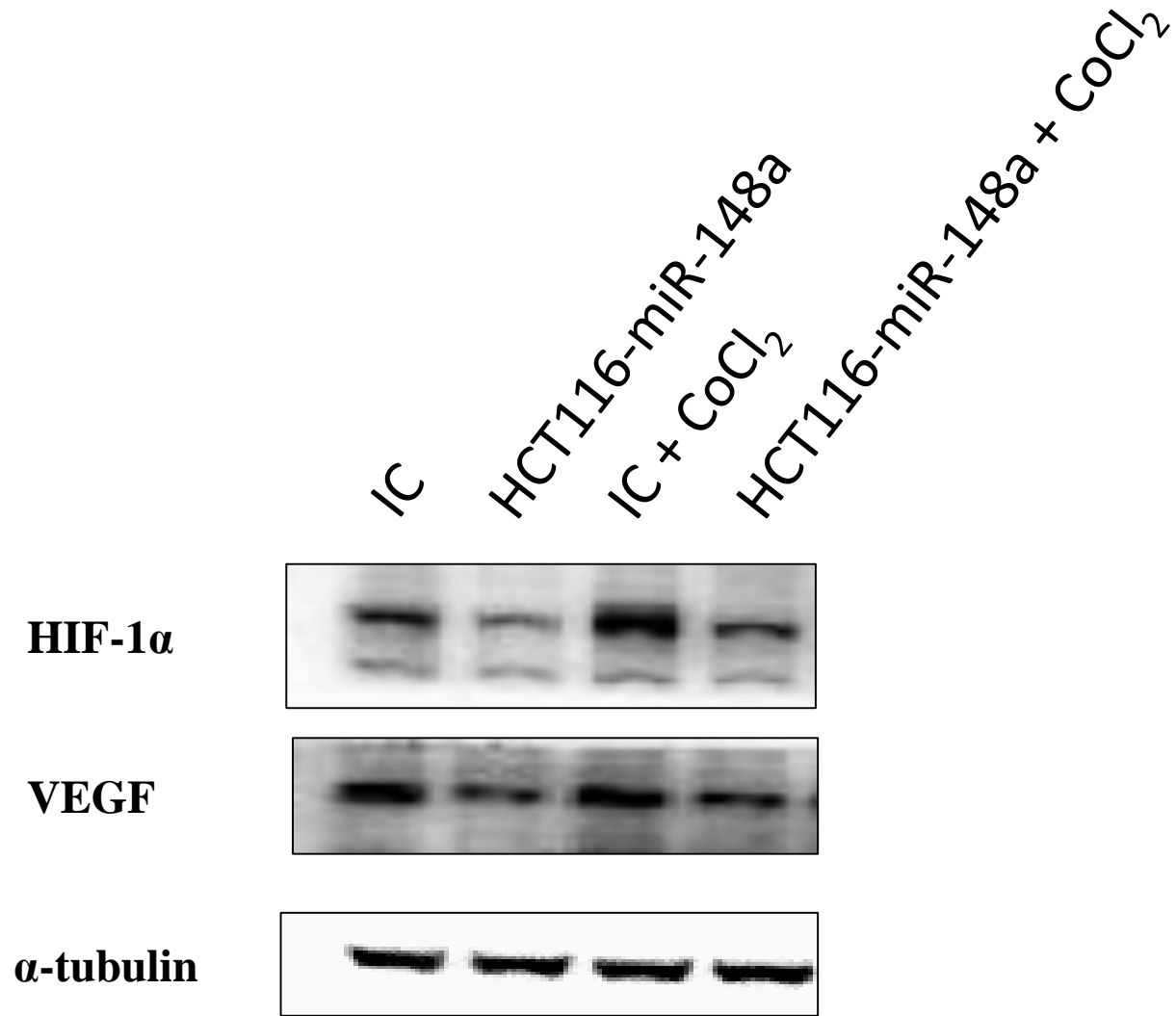


B



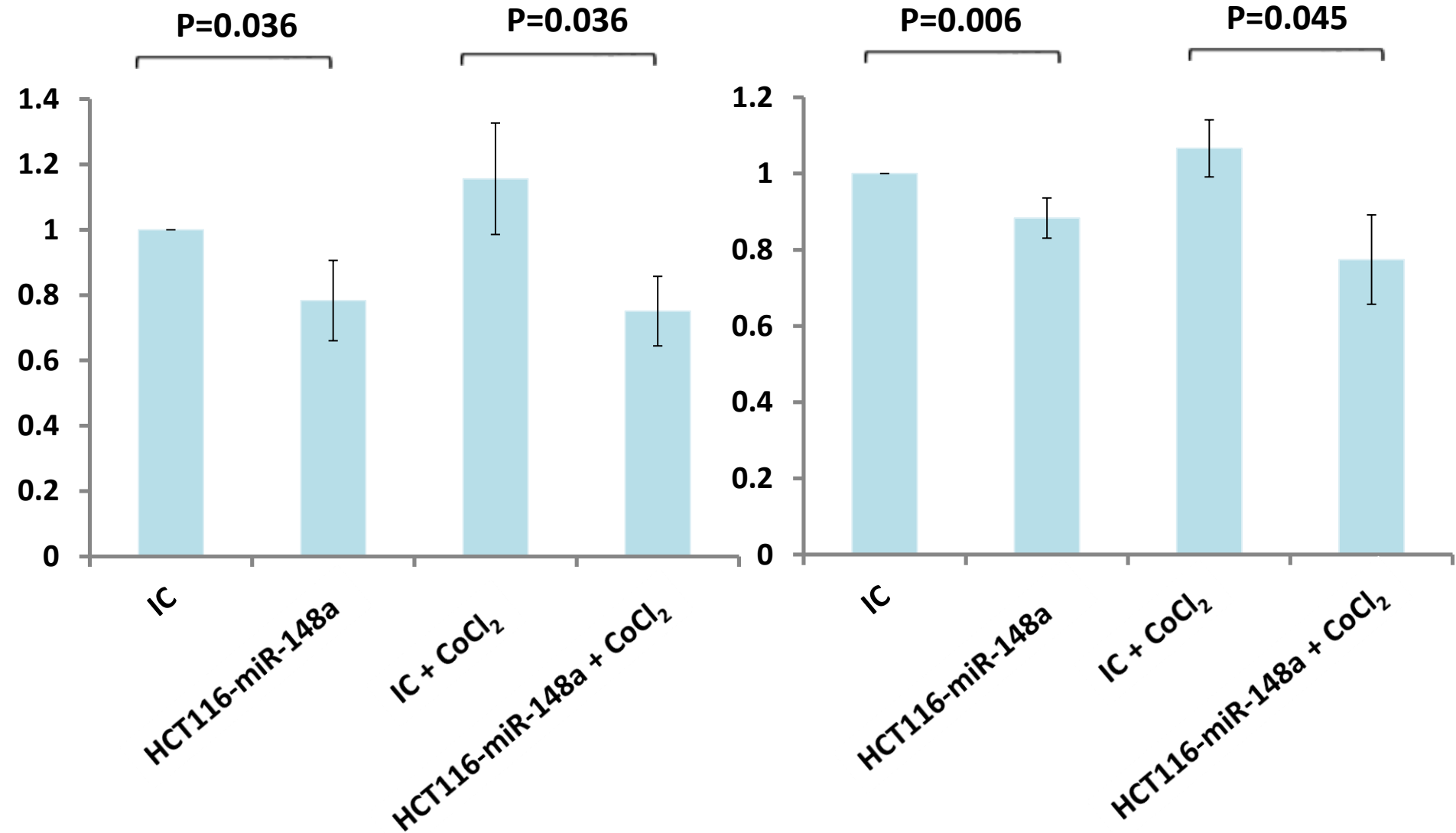
Supplementary Figure 3

A HCT116 (Full-length blots/gels are presented in Supplementary Figure 4A)

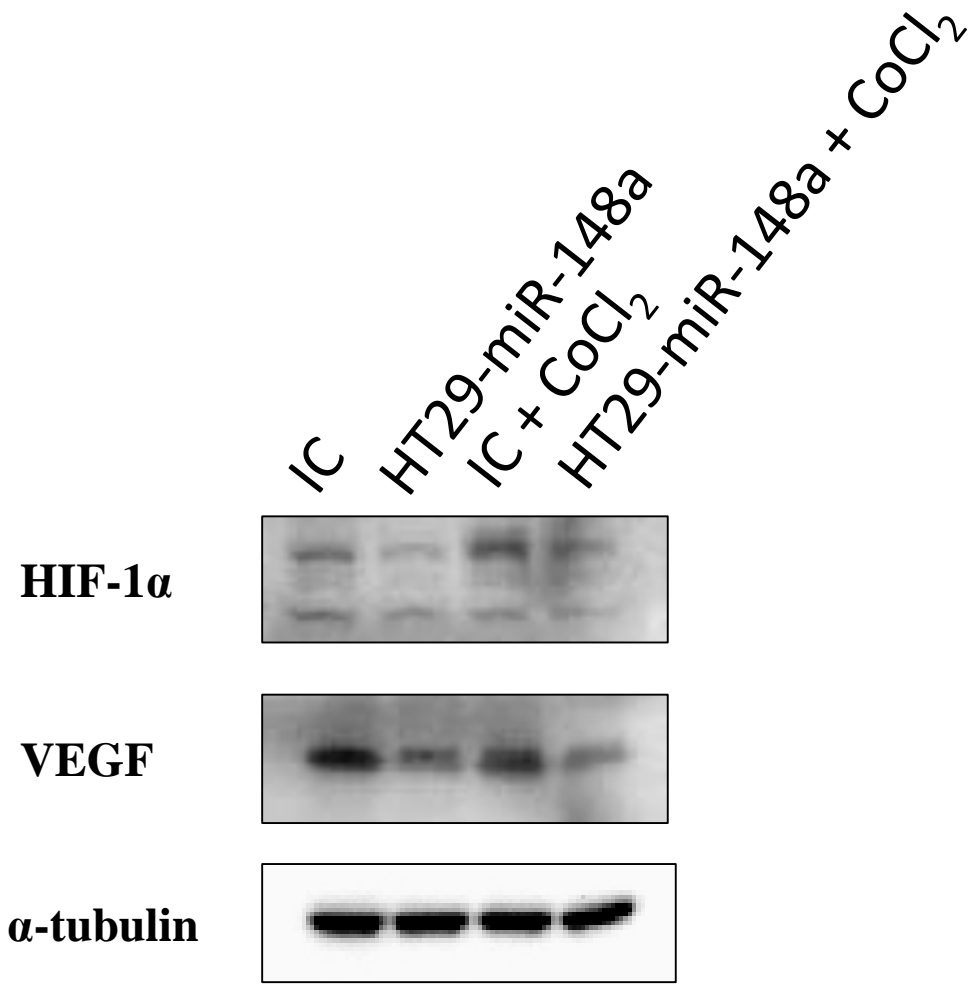


HCT116 HIF-1 α

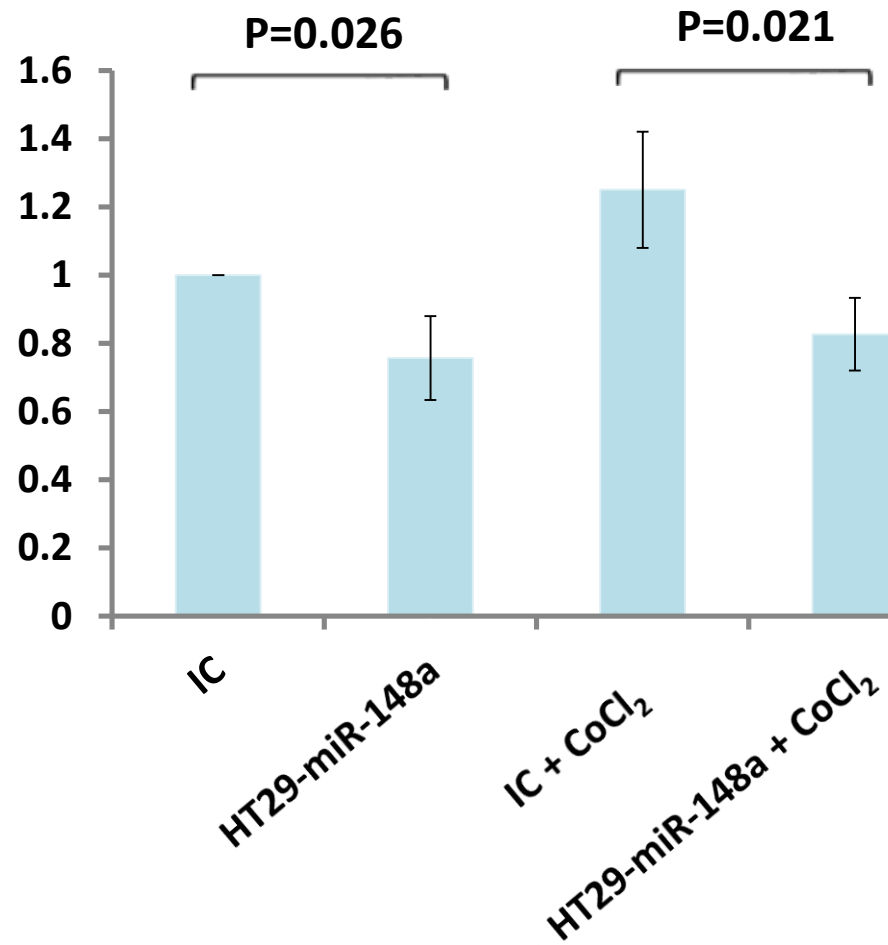
HCT116 VEGF



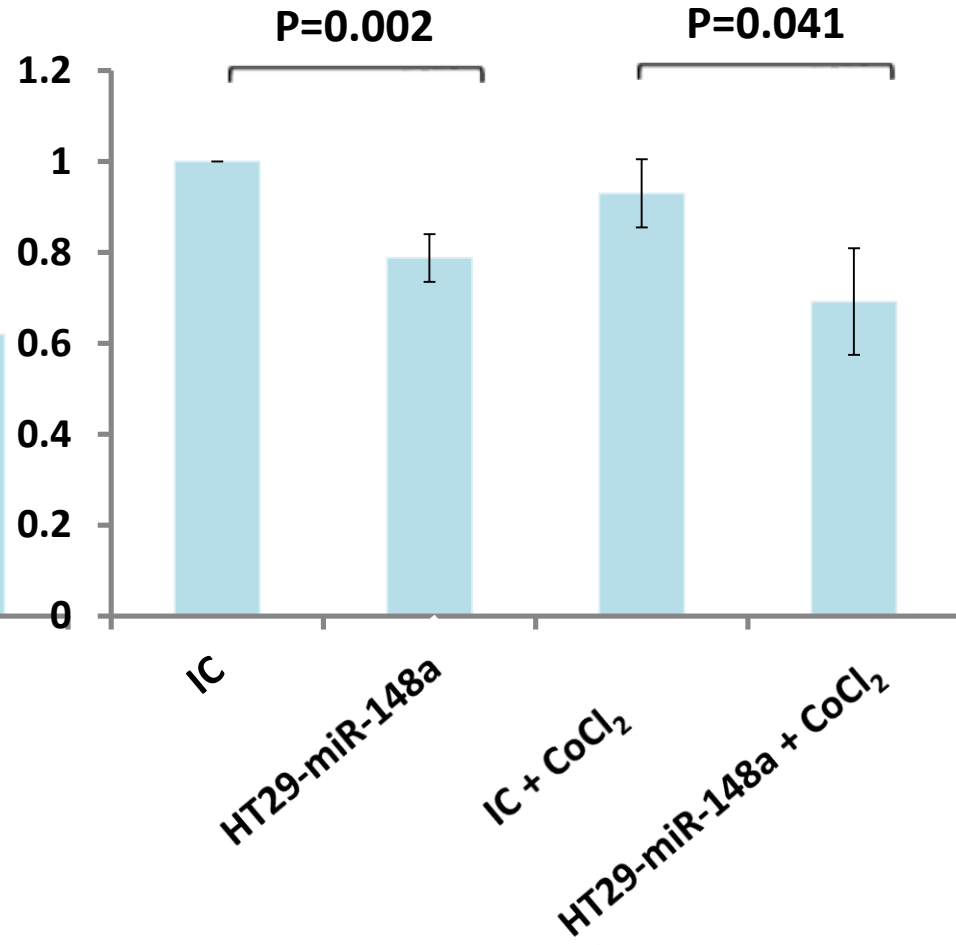
B HT29 (Full-length blots/gels are presented in Supplementary Figure 4B)



HT29 HIF-1 α



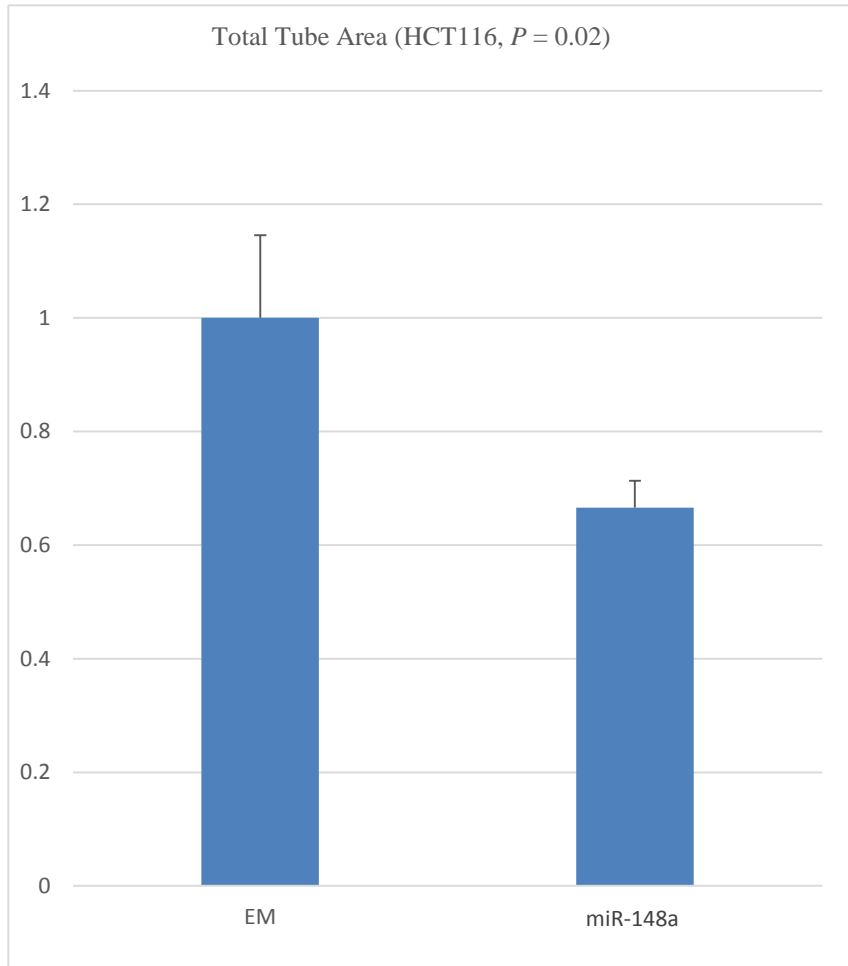
HT29 VEGF



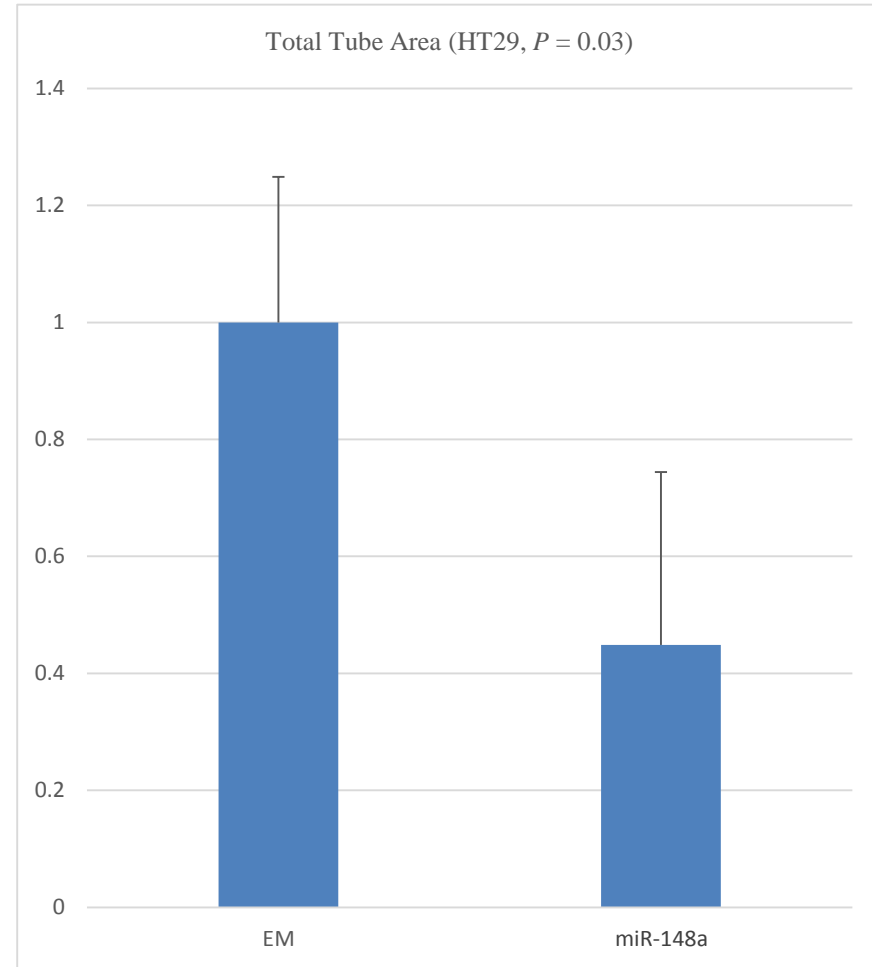
Supplementary Figure 4

HUVEC tube formation assay:

A



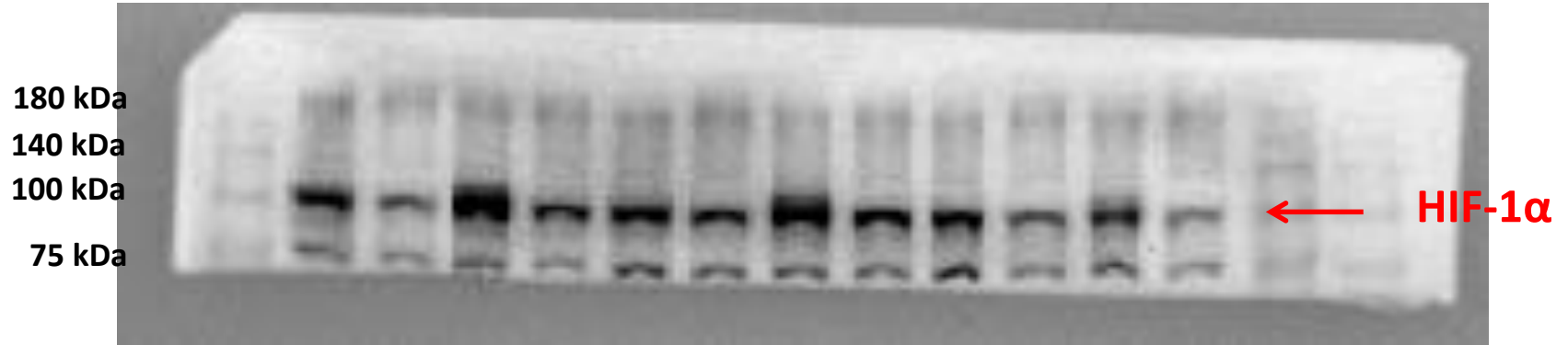
B



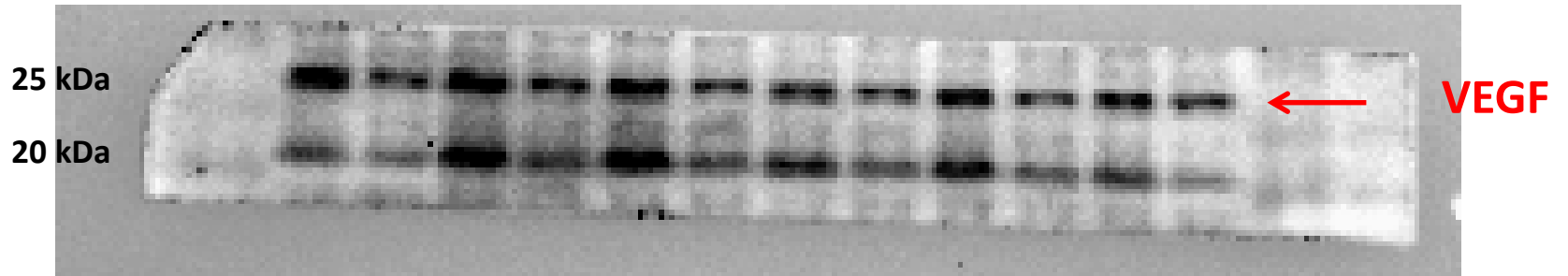
Supplementary Figure 5

A HCT116 (Full-length blots/gels)

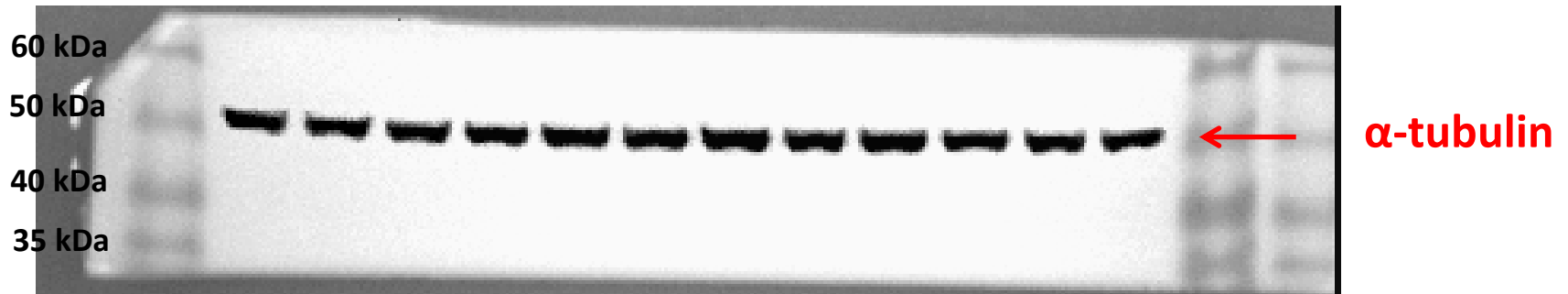
HIF-1 α



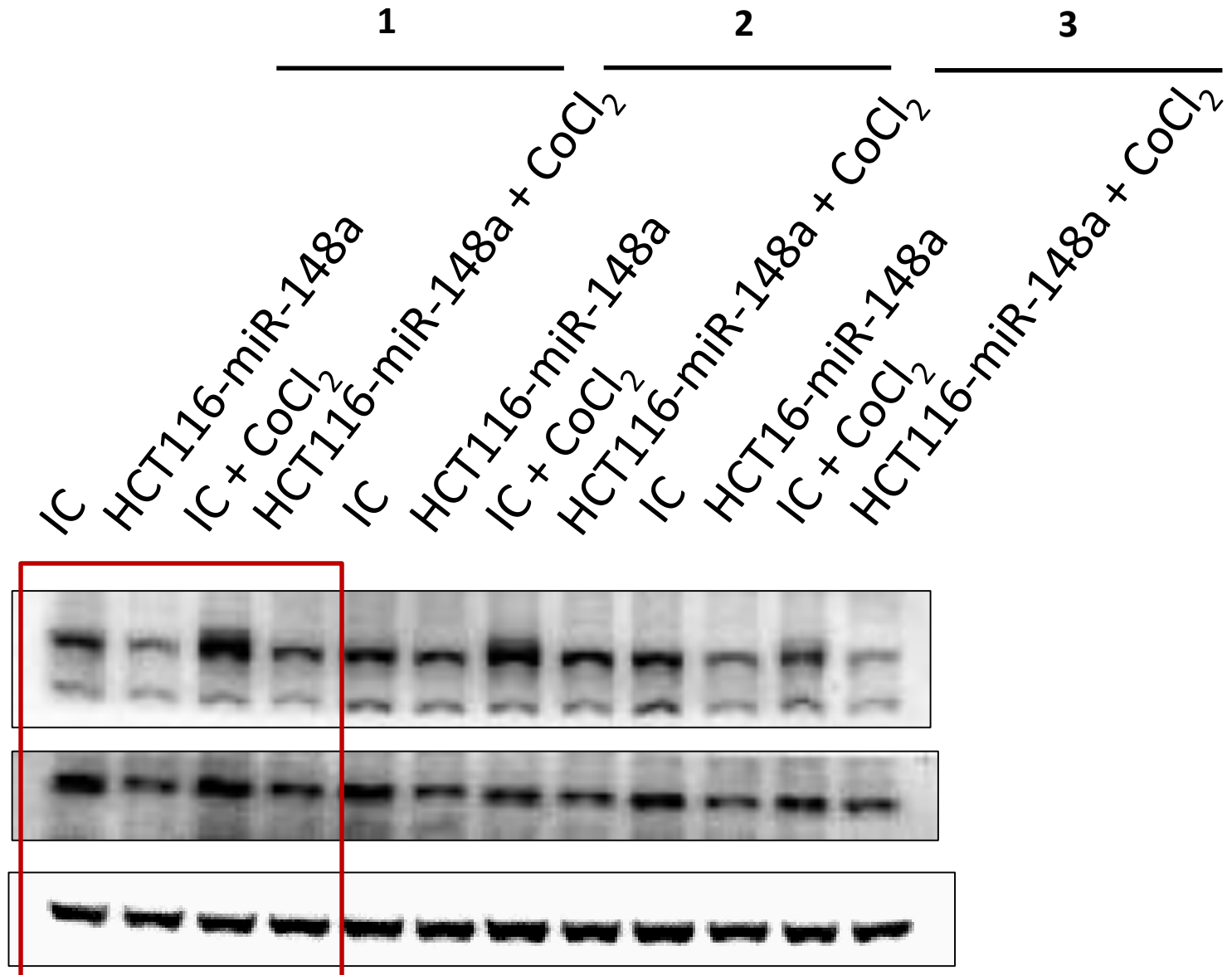
VEGF



α -tubulin

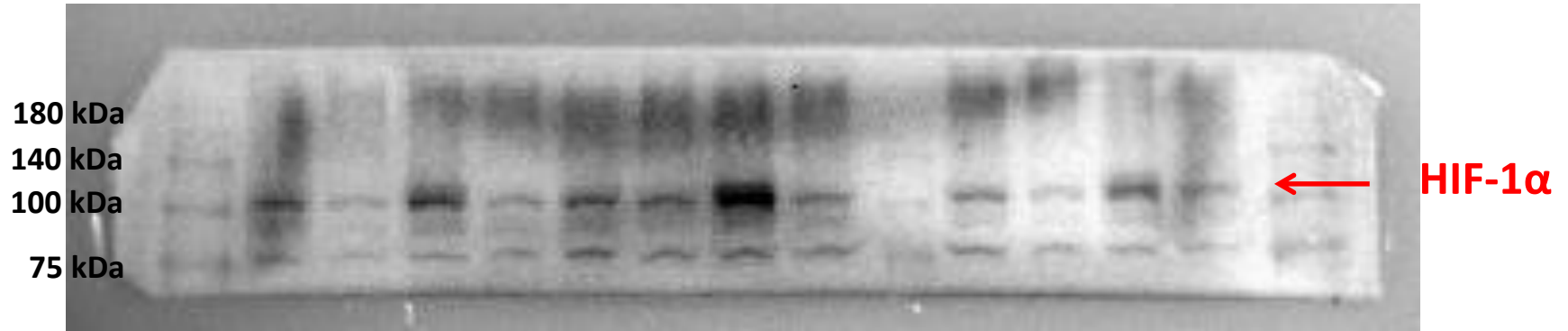


HCT116 (N=3)

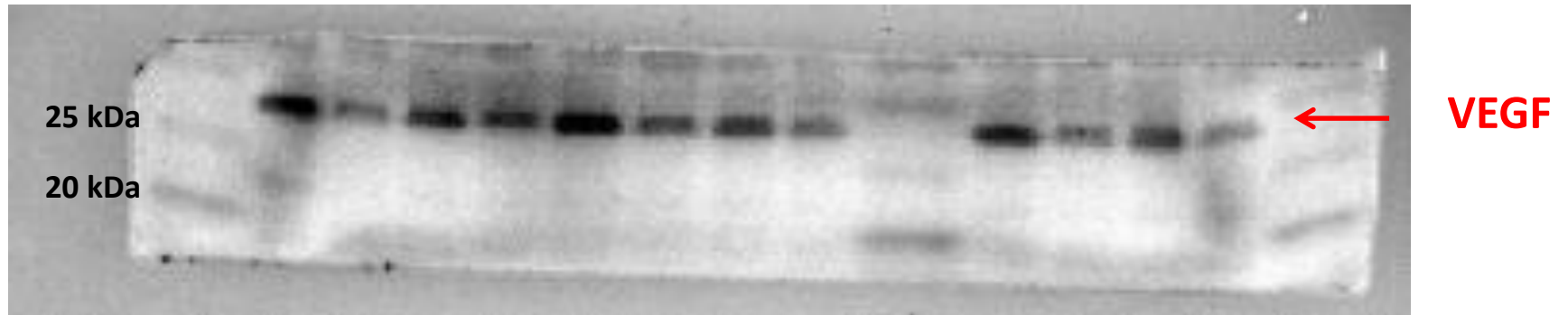


B HT29 (Full-length blots/gels)

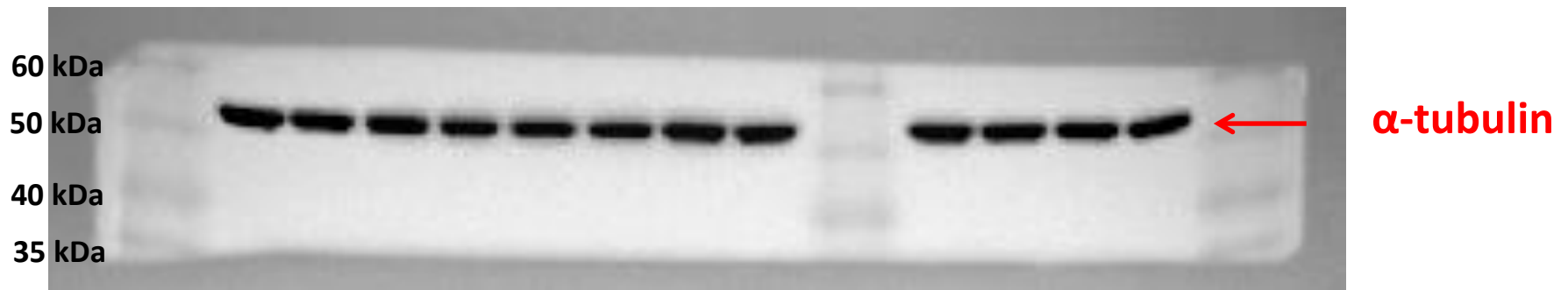
HIF-1 α



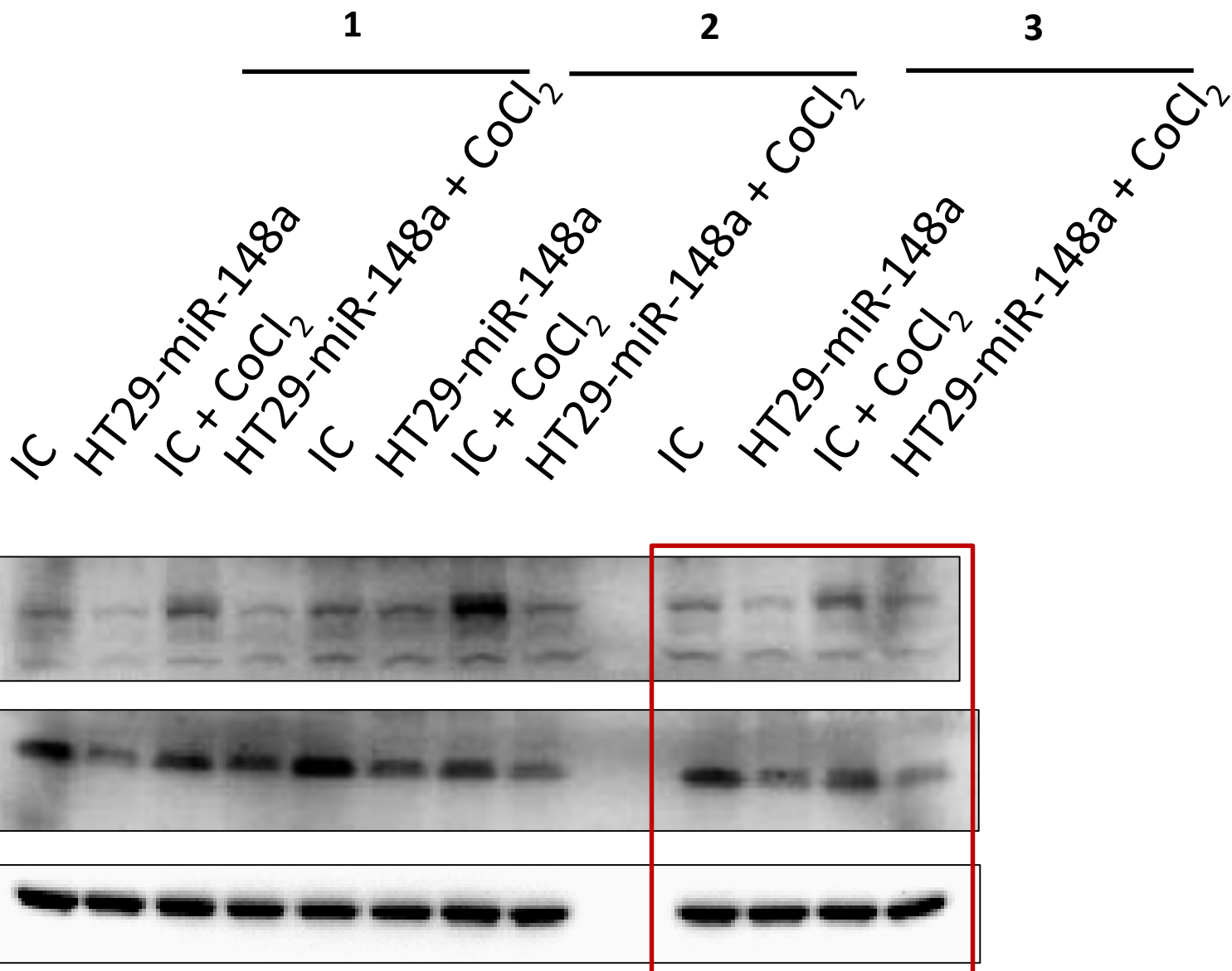
VEGF



α -tubulin



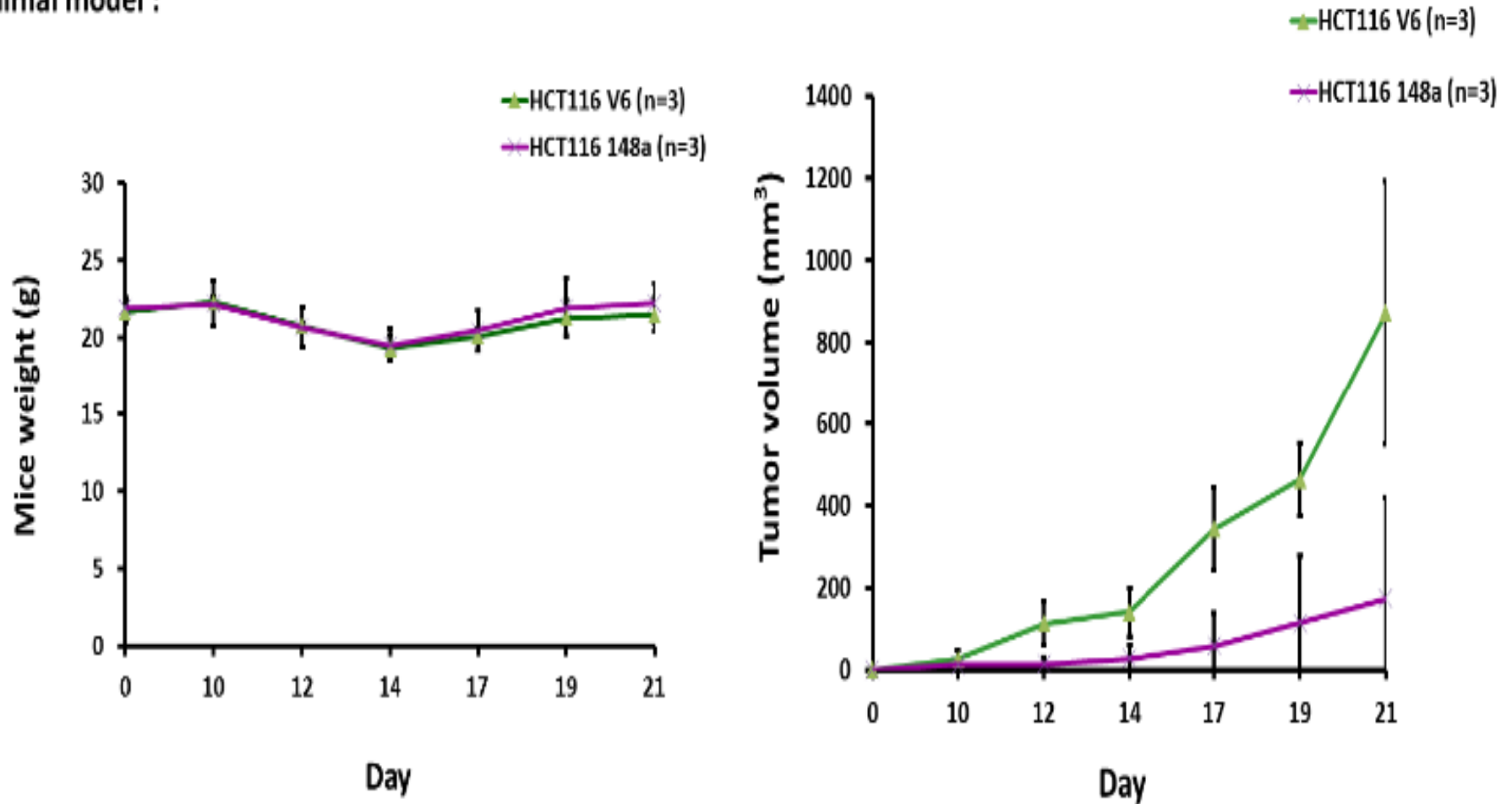
HT29 (N=3)



Supplementary Figure 6

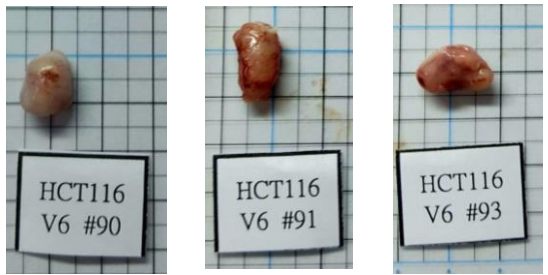
A HCT116 (N=3)

Animal model :

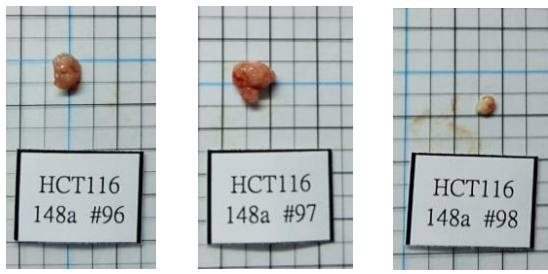


Tumor burden :

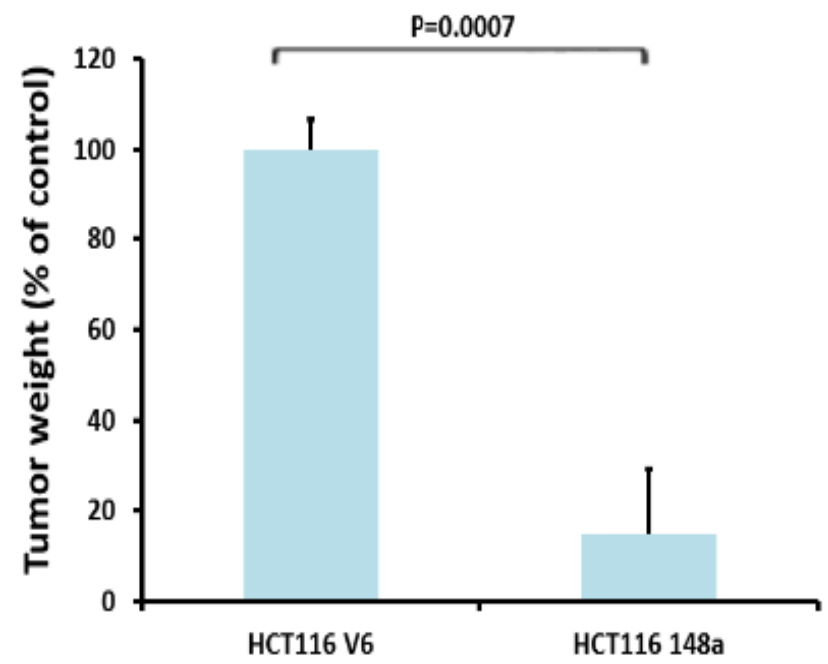
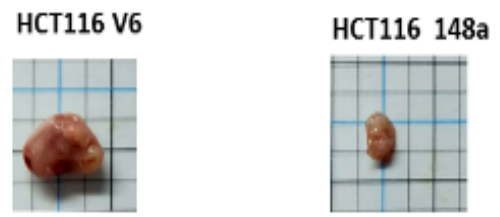
HCT116 V6



HCT116 148a

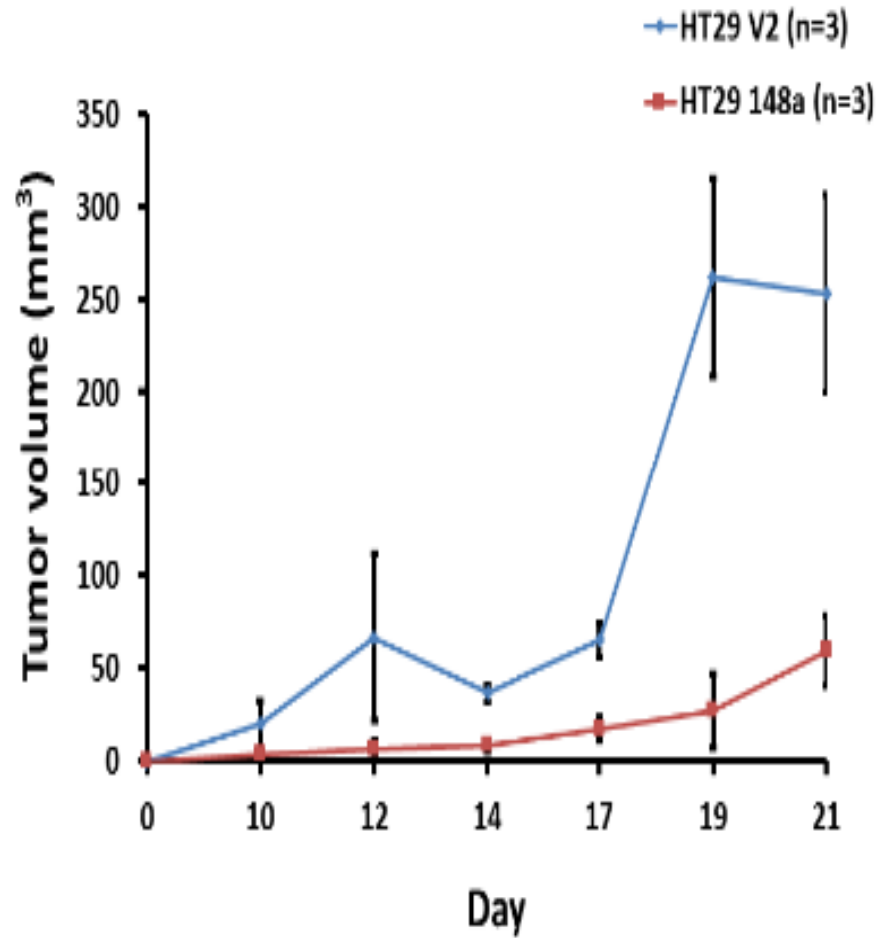
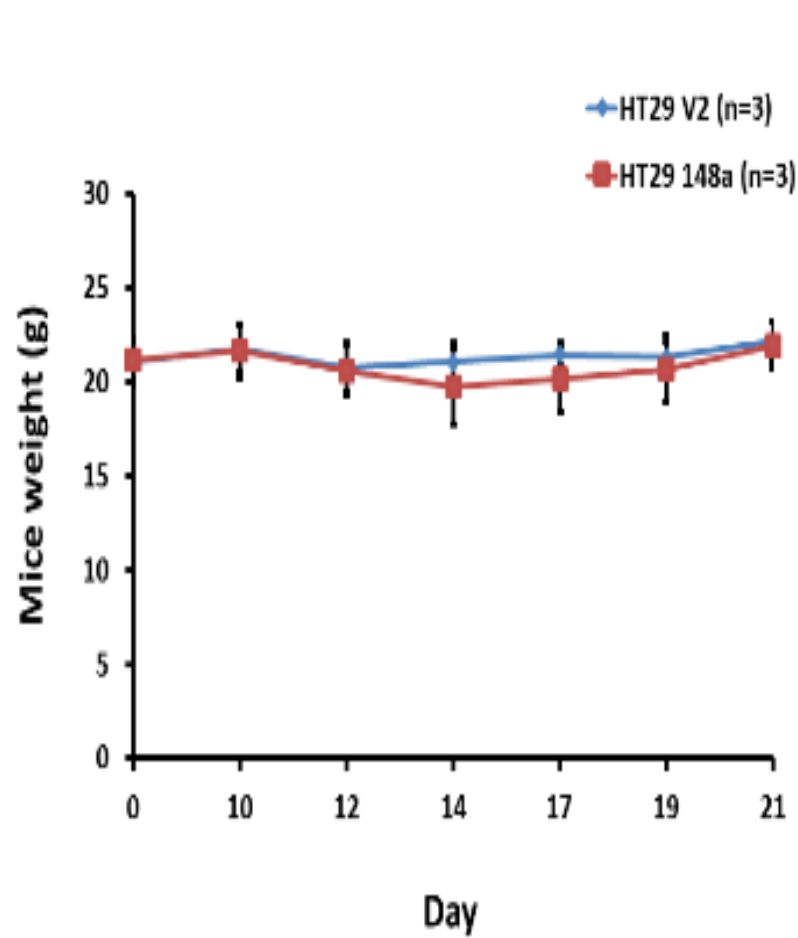


Tumor lumps were smaller in miR-148a group



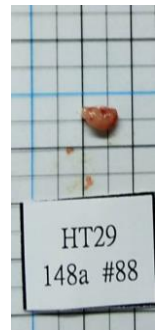
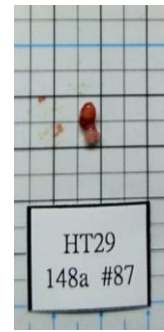
B HT 29 (N=3)

Animal model : HT29



Tumor burden :

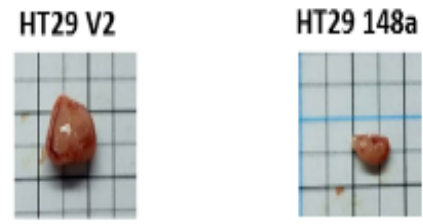
HT29 V2



HT29 148a



Tumor lumps were smaller in miR-148a group



P=0.0037

