

Appendix Figures

Appendix Figure S1: Reduction in Plet1 and Atp6v1c2 expression on loss of Gata6 in K14 Δ NLef1 tumors.

Appendix Figure S2: Reduction in Mlh1 and Msh2 expression on loss of Gata6 in K14 Δ NLef1 tumors.

Appendix Figure S3: Gata6 expression in a range of human skin tumors.

Appendix Figure legends

Appendix Figure S1: Reduction in Plet1 and Atp6v1c2 expression on loss of Gata6 in K14 Δ NLef1 tumors.

Digital tissue microarray of WT, K14 Δ NLef1 and K14 Δ NLef1:cKO mouse skin tumor sections labelled with antibodies to Plet1 and Atp6v1c2. Some of these images are also depicted in Fig 4D. Scale bar: 100 μ m.

Appendix Figure S2: Reduction in Mlh1 and Msh2 expression on loss of Gata6 in K14 Δ NLef1 tumors.

(A) Digital tissue microarray of K14 Δ NLef1 and K14 Δ NLef1:cKO mice skin tumor sections labelled with Mlh1 antibody. Technical controls are displayed (without primary antibody incubation). A positive control (UVB-irradiated WT mice) and a negative control (WT mice) are also included. Some of these images are also depicted in Fig 5D.

(B) Digital tissue microarray of K14 Δ NLef1 and K14 Δ NLef1:cKO mice skin tumor sections labelled with Msh2 antibody with similar controls as in (A). Some of these images are also depicted in Fig 5E.

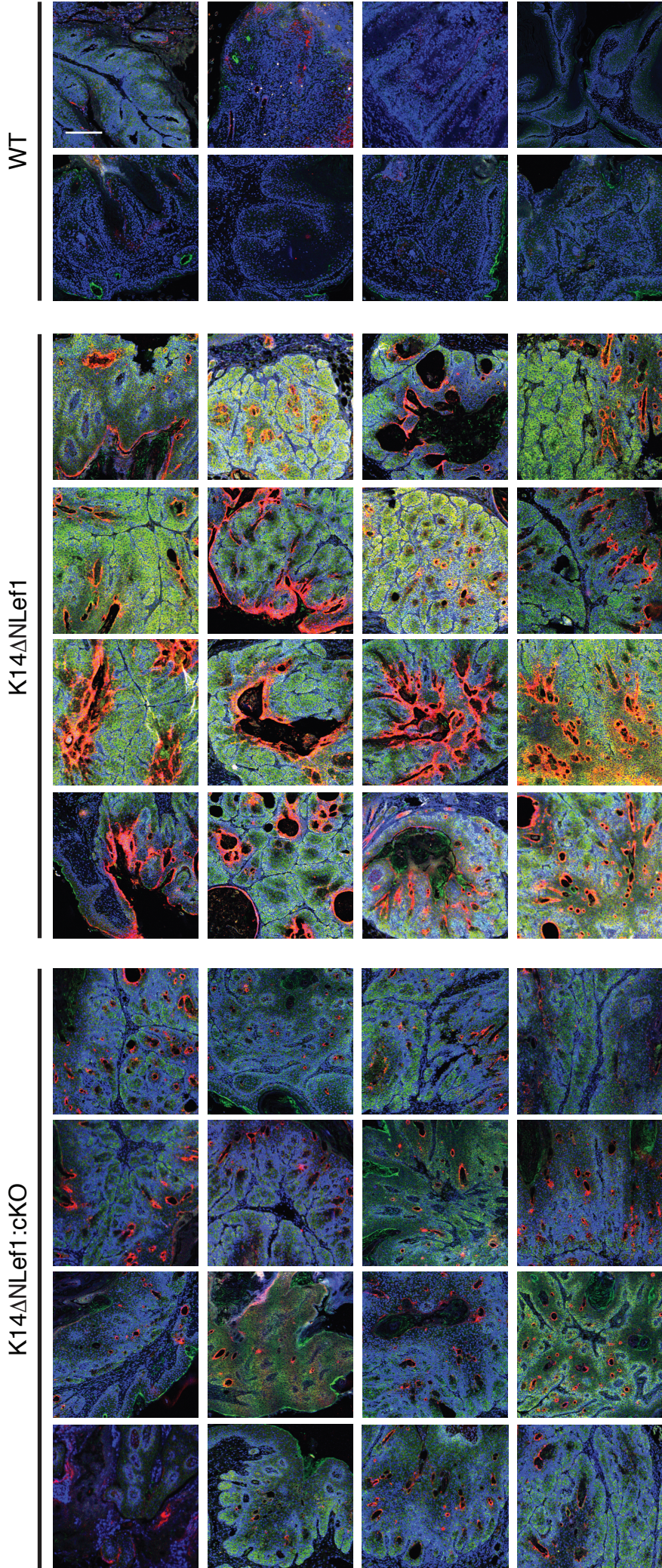
Data information: (A and B) Scale bar: 250 μ m.

Appendix Figure S3: Gata6 expression in a range of human skin tumors.

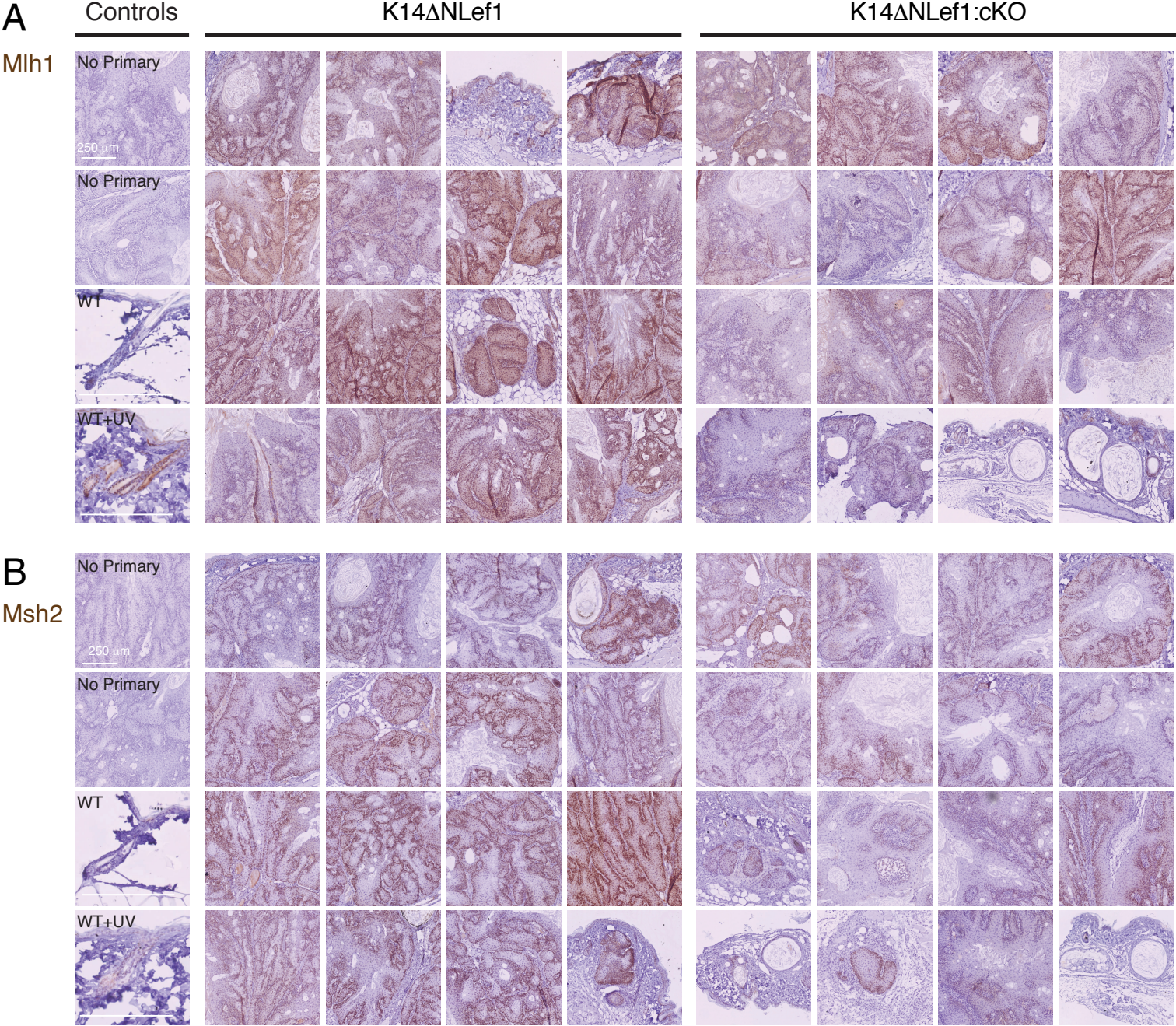
Digital tissue microarray of human skin tumors sections labelled with Gata6 and PanKeratin antibodies. Some of these images are also depicted in Fig 6B. Scale bar: 100 μ m.

Appendix Figure S1

Plet1 Atp6v1c2



Appendix Figure S2



Appendix Figure S3

Human skin tumors

Gata6 PanKeratin

