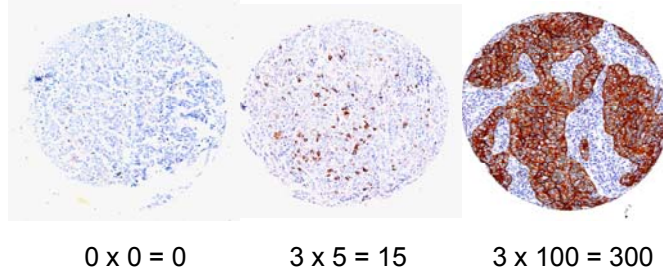


Supplementary
Figure 1

I (intensity 0 to 3) x P (percentage 0-100%) = score



Supplementary Figure 1: examples of staining obtained for sLe^x in TMA to illustrate the calculation of the score. Intensity of the staining was determined by cross-examination of all the cores stained for each given slide. Percentage represents the proportion of tumour cells positively stained excluding the non tumoural content of the core.