

Cell Reports, Volume 27

Supplemental Information

A Comprehensive *Drosophila melanogaster*

Transcription Factor Interactome

Leila Shokri, Sachi Inukai, Antonina Hafner, Kathryn Weinand, Korneel Hens, Anastasia Vedenko, Stephen S. Gisselbrecht, Riccardo Dainese, Johannes Bischof, Edy Furger, Jean-Daniel Feuz, Konrad Basler, Bart Deplancke, and Martha L. Bulyk

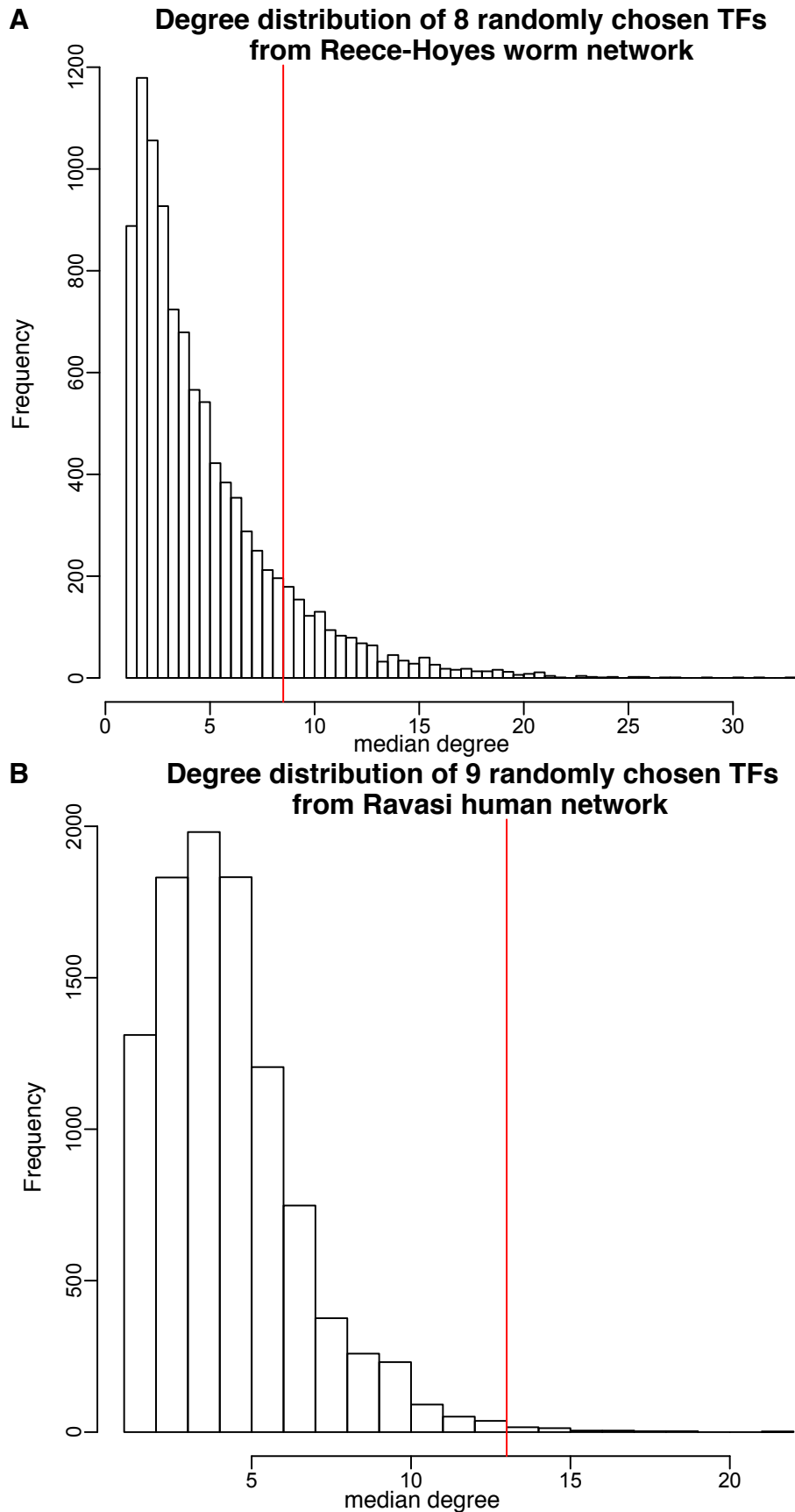


Figure S1. Degree distributions of hub TFs' orthologs in (A) *C. elegans* (Reece-Hoyes et al., 2013) and (B) human (Ravasi et al., 2010) TF–TF interaction networks, related to Figure 1. There were 8 worm orthologs and 9 human orthologs of fly hub TFs, corresponding to the numbers of TFs that were randomly sampled as a set in each panel. Red vertical lines indicate the median degree for hub orthologs.

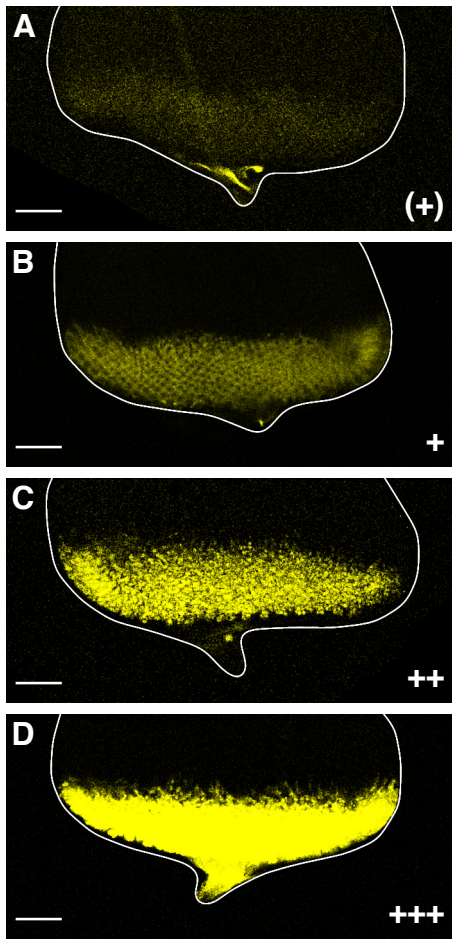


Figure S2. Example images of BiFC corresponding to different interaction signal intensity calls in Table S4. Related to Figure 2. Scale bars are 50 μm .

Table S3: *Drosophila* TF–TF PRS pairs, Related to Figure 2.

Gene 1 FBgn ID	Gene 1 Gene Symbol	Gene 2 FBgn ID	Gene 2 Gene Symbol	# PubmedIDs supporting interaction	Pubmed ID (MasterNet)	PPI found in Y2H	Tested in Y2H
FBgn0001168	h	FBgn0001139	gro	9	8001118 12154126 9371806 10213677 15935776 21343912 17898168 19805071 9892668	No	Yes
FBgn0000611	exd	FBgn0001235	hth	6	10215621 12408801 9346235 10704852 17981120 14605208	Yes	Yes
FBgn0001077	ftz	FBgn0001078	ftz-f1	5	15823536 11157757 16051145 11592991 14605208	No	Yes
FBgn0004837	Su(H)	FBgn0001169	H	5	20231316 15710747 14605208 22036573 10079358	No	Yes
FBgn0001168	h	FBgn0020496	CtBP	4	9524128 21343912 9892668 10973955	No	Yes
FBgn0001320	kni	FBgn0020496	CtBP	4	17972097 19805071 14605208 22036573	No	Yes
FBgn0000588	esc	FBgn0015805	Rpd3	4	11124122 12697833 12533794 15896722	No	Yes
FBgn0020496	CtBP	FBgn0003448	sna	4	17972097 18309295 14605208 22036573	No	Yes

FBgn0000575	emc	FBgn0004170	sc	3	9371806 14605208 1525829	Yes	Yes
FBgn0000022	ac	FBgn0002609	E(spl)m3- HLH	2	9371806 14605208	No	Yes
FBgn0039044	p53	FBgn0035357	CG1244	2	15575970 15710747	No	Yes
FBgn0000575	emc	FBgn0267821	da	2	9371806 14605208	No	Yes
FBgn0000591	E(spl)m8- HLH	FBgn0001139	gro	2	9371806 14605208	No	Yes
FBgn0002734	E(spl)mdelta- HLH	FBgn0001139	gro	2	9371806 14605208	Yes	Yes
FBgn0002631	E(spl)m5- HLH	FBgn0001139	gro	2	9371806 14605208	No	Yes
FBgn0002633	E(spl)m7- HLH	FBgn0001139	gro	2	9371806 9751710	No	Yes
FBgn0002609	E(spl)m3- HLH	FBgn0001139	gro	2	9371806 14605208	No	Yes
FBgn0001291	Jra	FBgn0001291	Jra	3	11554782 14605208 20813260	No	Yes
FBgn0017578	Max	FBgn0023215	Mnt	2	14605208 22036573	No	Yes
FBgn0262656	dm	FBgn0017578	Max	2	17898168 14605208	No	Yes
FBgn0043002	Chrac-14	FBgn0043001	Chrac-16	3	10856248 14605208 22036573 22036573	Yes	Yes
FBgn0024250	brk	FBgn0020496	CtBP	2	14605208 22036573	Yes	Yes
FBgn0001325	Kr	FBgn0020496	CtBP	2	19049982 14605208	No	Yes
FBgn0032202	CG18619	FBgn0039209	CG13624	2	14605208 22036573	No	Yes
FBgn0033998	row	FBgn0015602	BEAF-32	2	14605208 22036573	No	Yes
FBgn0001291	Jra	FBgn0001297	kay	2	14605208 22036573 22036573	Yes	Yes
FBgn0004837	Su(H)	FBgn0031759	lid	2	19782028 20231316	No	Yes
FBgn0266452	CG6854	FBgn0020496	CtBP	2	14605208 22036573	No	Yes
FBgn0023094	cyc	FBgn0023076	Clk	2	19376119 9616122	No	Yes

FBgn0085432	pan	FBgn0001139	gro	2	9751710 17113388	No	Yes
FBgn0004666	sim	FBgn0264075	tgo	3	22036573 9403694 9409674	Yes	Yes
FBgn0000588	esc	FBgn0020887	Su(z)12	4	12408864 15896722 16537908 12697833	No	Yes
FBgn0000546	EcR	FBgn0003964	usp	3	12556479 7644522 14592980 0	No	Yes
FBgn0034534	maf-S	FBgn0262975	cnc	2	23661758 14605208	No	Yes
FBgn0000964	tj	FBgn0000964	tj	2	14605208 23661758	No	Yes
FBgn0003300	run	FBgn0013753	Bgb	2	8622696 14605208 0	No	Yes
FBgn0003870	ttk	FBgn0262519	Mi-2	2	22036573 20733004 0	No	Yes
FBgn0020496	CtBP	FBgn0001169	H	2	12154126 14605208	No	Yes
FBgn0000611	exd	FBgn0003339	Scr	2	17981120 22745600	No	Yes
FBgn0015799	Rbf	FBgn0033846	mip120	2	15479636 15545624	No	Yes
FBgn0035357	CG1244	FBgn0262519	Mi-2	2	19165147 20733004	No	Yes