

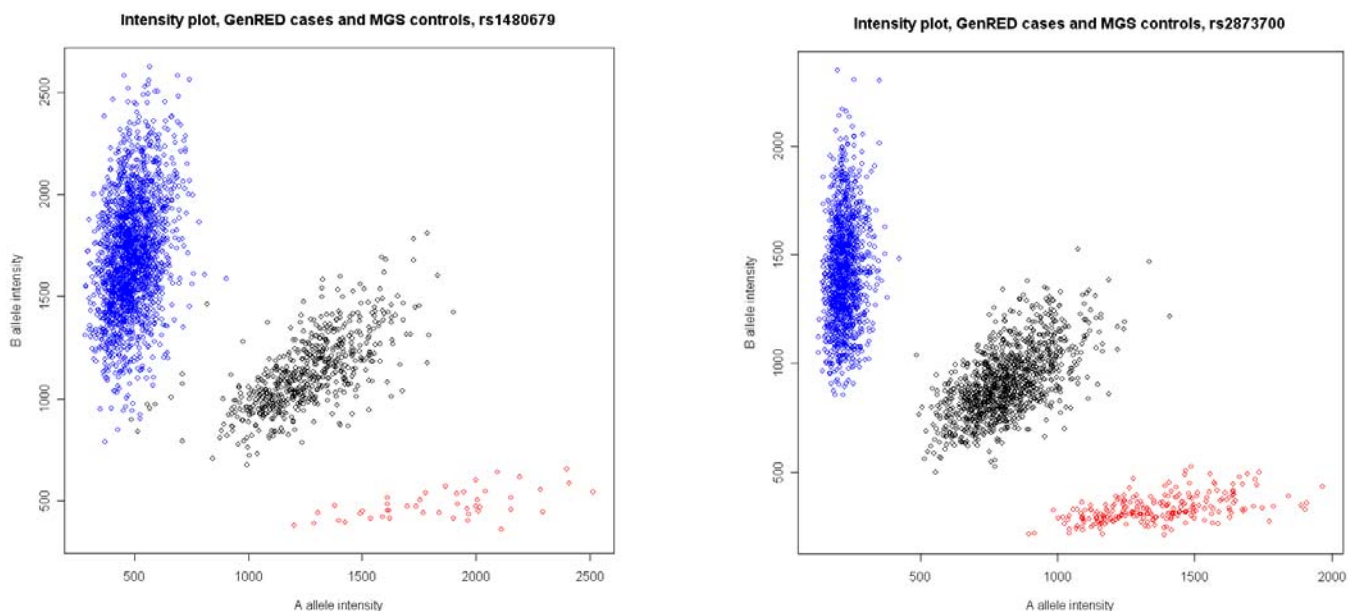
**GenRED GWAS Intensity plots.** In this file, we provide intensity plots for the best SNPs in the GenRED GWAS and the meta-analysis.

First, we provide plots for six genotyped SNPs and one imputed SNP (rs17077540) in GenRED GWAS Table 2 with p-value <  $10^{-6}$  in at least one analysis. For the imputed SNP rs17077540, we present intensity plots of its three best tag SNPs: rs1480679, rs2873700 and rs379982.

We visually checked intensity plots for all other SNPs listed in Table 2 (plots not shown here) and all demonstrated acceptable separation of genotype clusters.

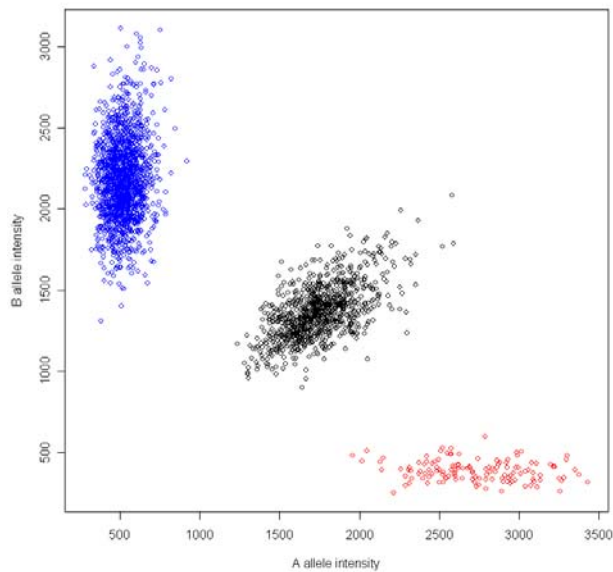
**Table S9: SNPs with intensity plots (GenRED GWAS)**

Band	Tested SNP	BP	Tagging SNPs
18q22.1	rs17077540	63436259	rs1480679, rs2873700, rs379982
21q21.2	rs2828520	24064990	Genotyped
16q12.2	rs2631522	53782584	Genotyped
12p12.3	rs12581840	19725418	Genotyped
3p14.2	rs12633494	61120090	Genotyped
1q24.3	rs17657363	170068039	Genotyped
2p23.2	rs882632	29134265	Genotyped

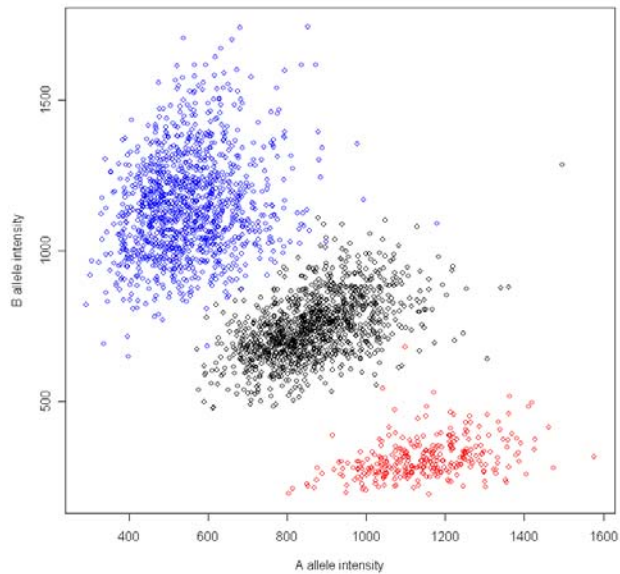


**Figure S19: GenRED sample intensity plots, GenRED GWAS best SNPs (or tags) (continues on following pages).**

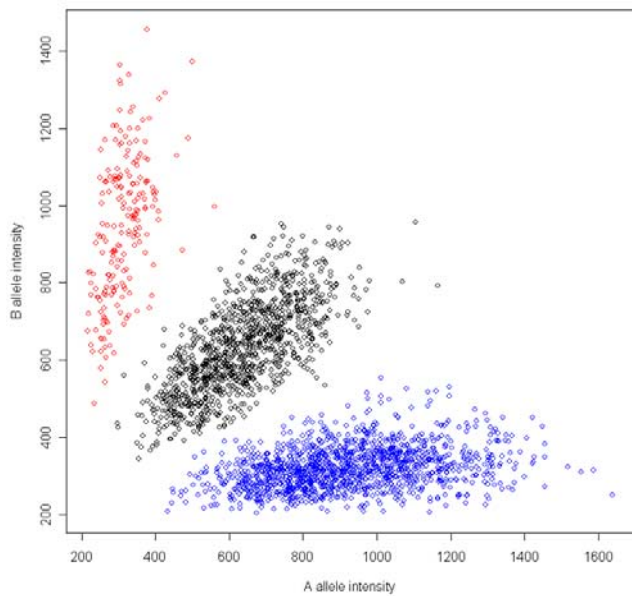
Intensity plot, GenRED cases and MGS controls, rs379982



Intensity plot, GenRED cases and MGS controls, rs2828520



Intensity plot, GenRED cases and MGS controls, rs2631522



Intensity plot, GenRED cases and MGS controls, rs12581840

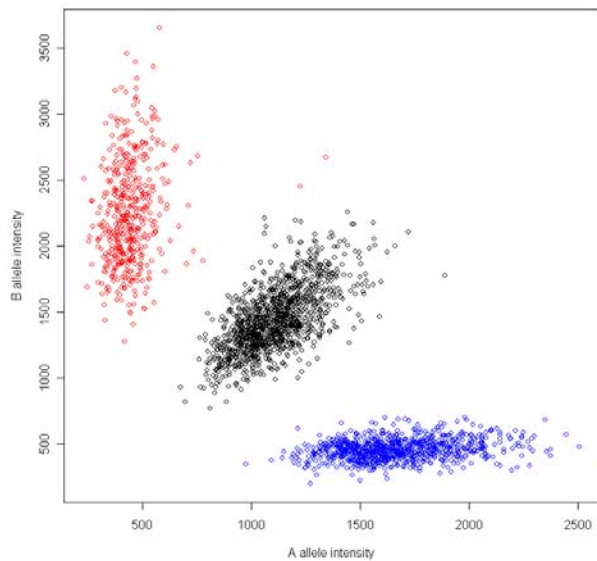
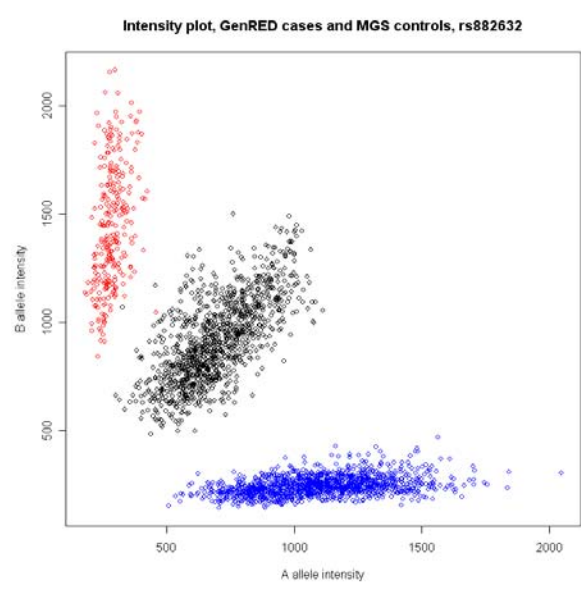
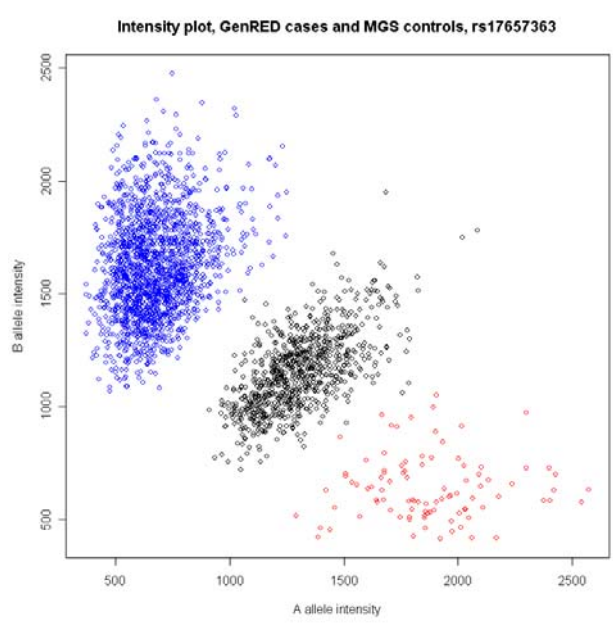
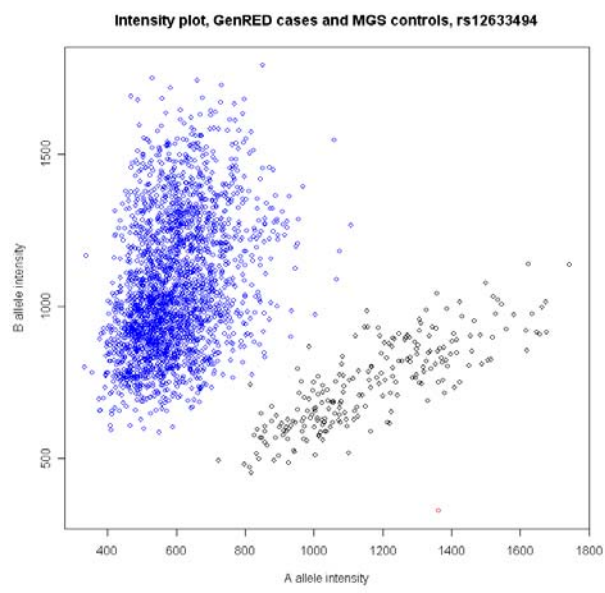


Figure S19: GenRED sample intensity plots for GenRED GWAS, continued (continues on following page)

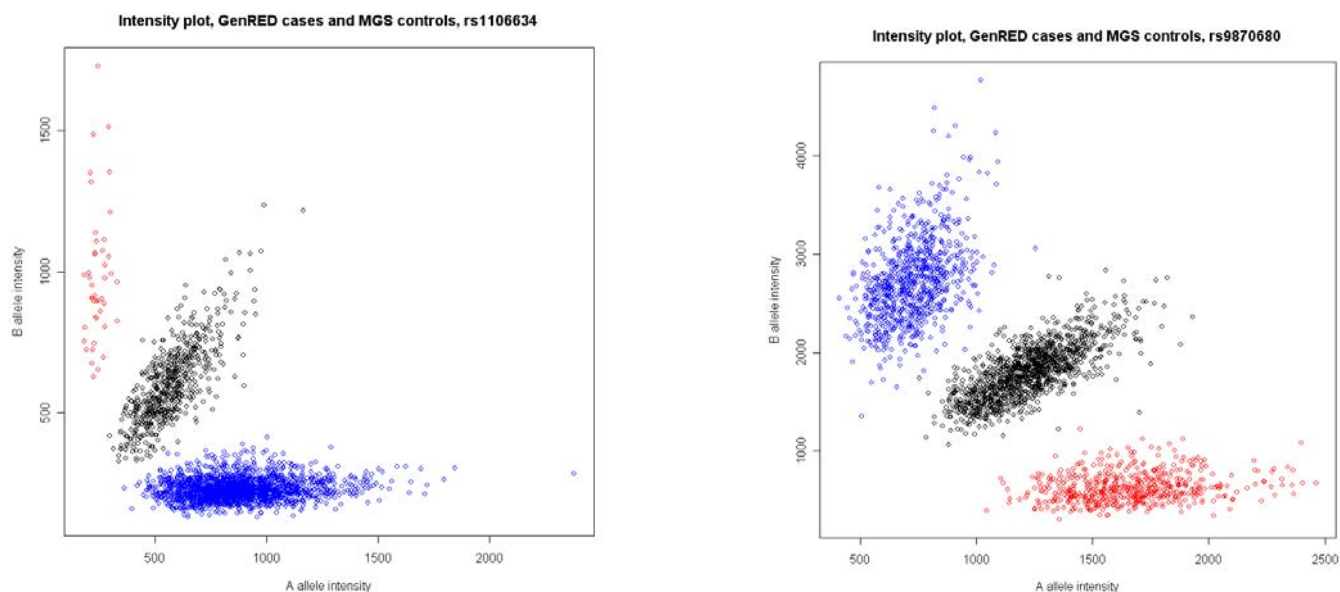


**Figure S19: GenRED sample intensity plots for GenRED GWAS, continued.**

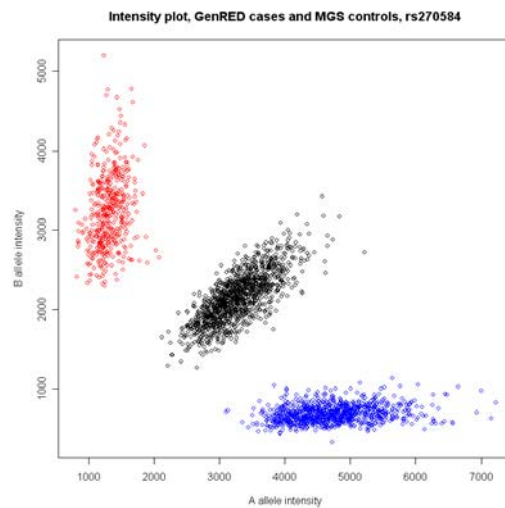
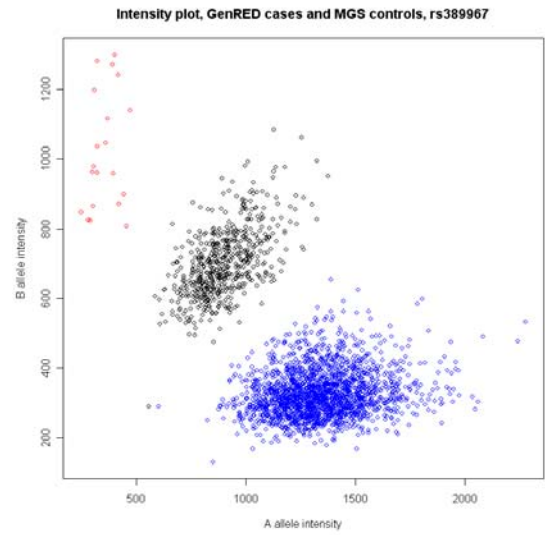
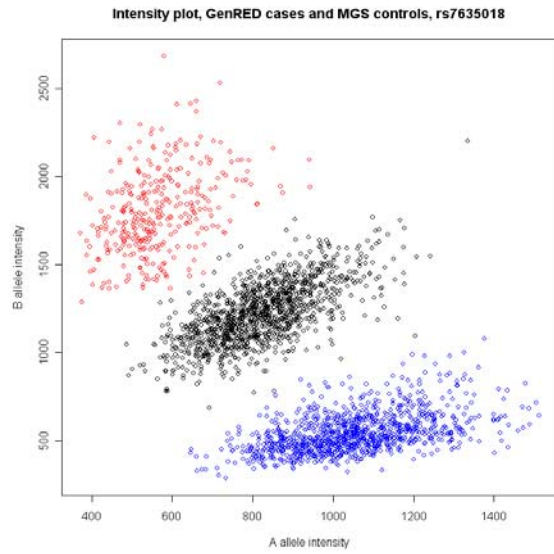
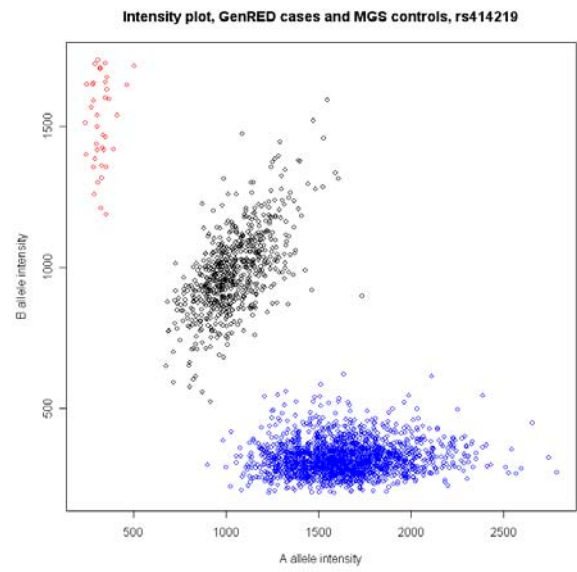
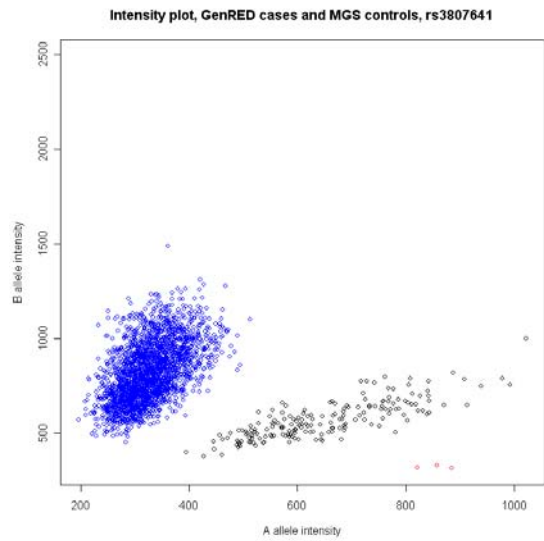
**GenRED Intensity plots for top meta-analysis findings.** We provide below the plots of intensity values underlying genotype calling, for the GenRED sample, for SNPs with  $p < 10^{-6}$  in any of the analyses in the meta-analysis (Tables 5 and 6 of that paper). Three of the seven relevant SNPs were genotyped; for the four for which imputed data were used for GenRED, we provide plots for the best genotyped tag SNPs. Note that for imputed SNP rs17077540, the intensity plots for GenRED tag SNPs are available in the set of intensity plots for the best GenRED findings. For other SNPs in Tables 2 and 3 (with  $P > 10^{-6}$ ), we checked intensity plots of genotyped or tag SNPs and found that they had acceptable clustering (plots not shown here).

**Table S10: SNPs with intensity plots (meta-analysis)**

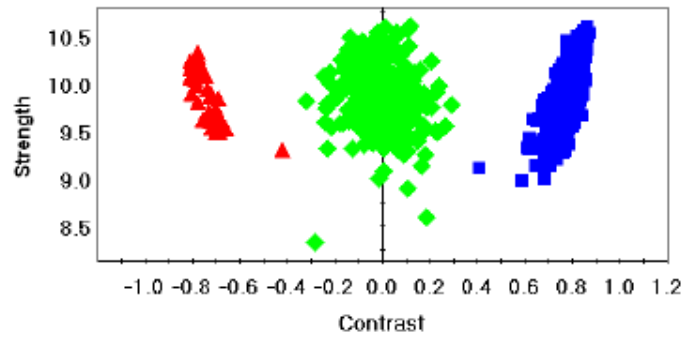
Band	Tested SNP	BP	Tag SNPs
8p21.3	rs1106634	20110329	Genotyped
3p26.1	rs9870680	7504555	Genotyped
7p15.3	rs17144465	21470952	rs3807641
11p15.1	rs435206	16859754	rs414219
18q22.1	rs17077540	63436259	See GenRED plots (above)
3p14.1	rs11710109	6836364	rs7635018
11p15.1	rs389967	16831186	genotyped
5p13.2	rs270584	38110611	rs270584



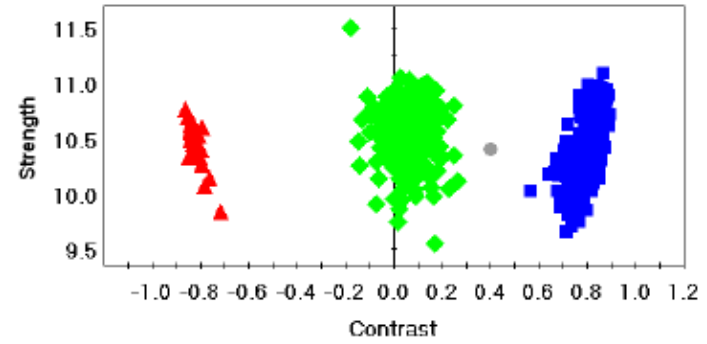
**Figure M18: GenRED sample intensity plots for meta-analysis best SNPs (continues on next page).**



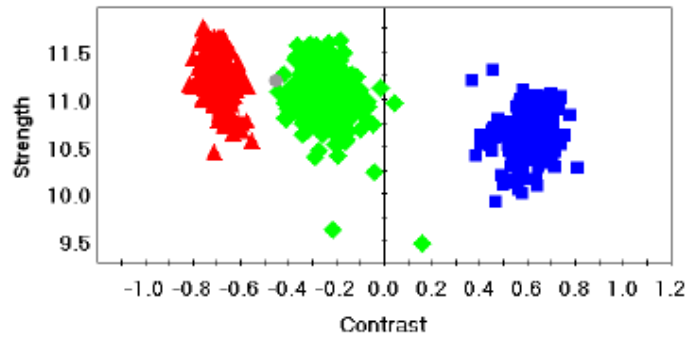
**Figure M18: GenRED sample intensity plots for meta-analysis best SNPs (continued).**



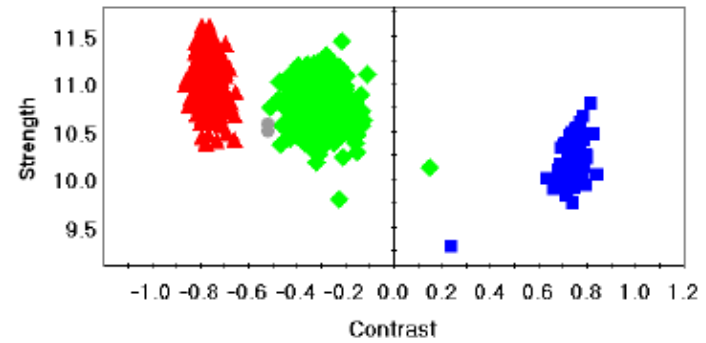
rs1106634



rs414219 (tags rs435206 with  $r^2 = 1.0$ )

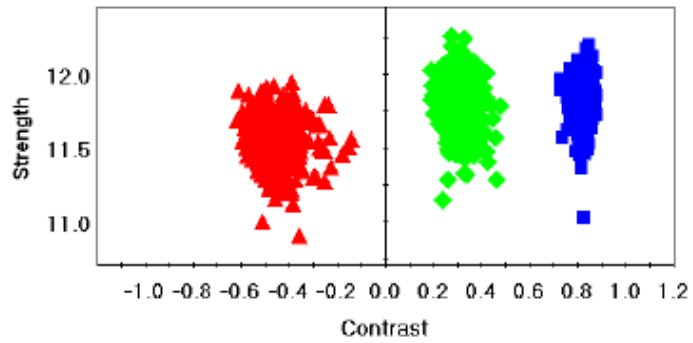


rs9870680

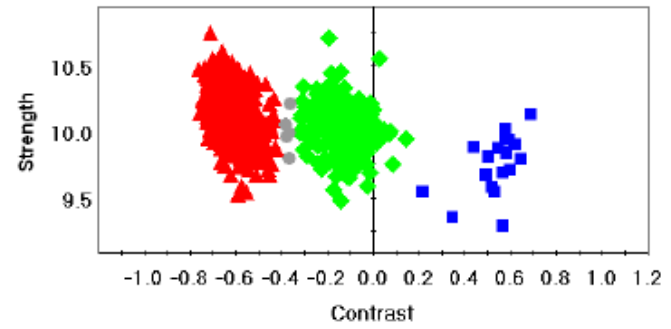


rs6774173 (tags rs11710109 with  $r^2 \geq 0.5$ )

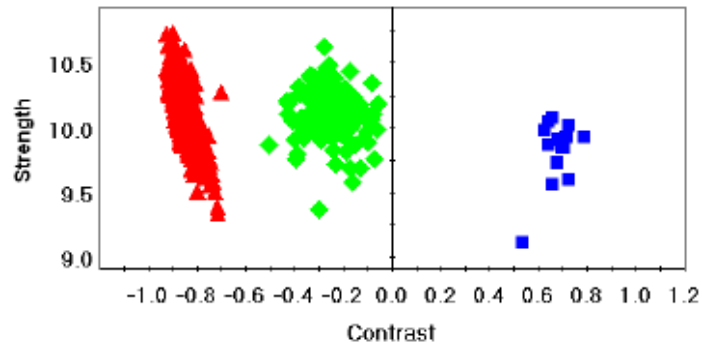
**Figure S21: STAR\*D intensity plots for meta-analysis best SNPs (or tags).** Shown are genotype cluster plots for the STAR\*D dataset for the SNPs with  $P < 10^{-6}$  in meta-analysis Tables 5 and 6, or tags for those SNPs. (continued on next pages)



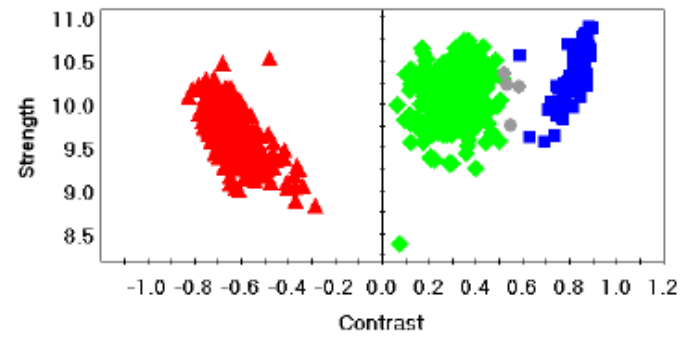
rs270584



rs417406 (tags rs389967 with  $r^2 = 1.0$ )

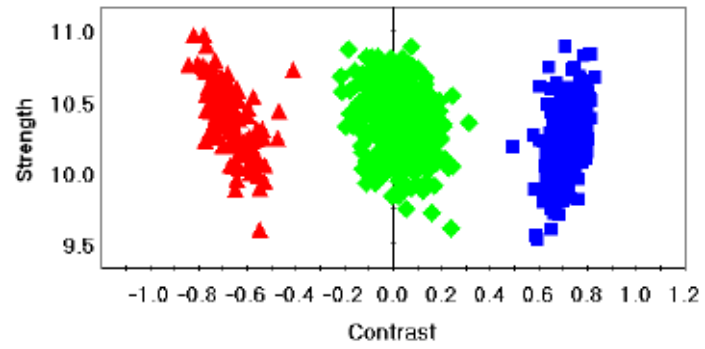


rs10950852 (tags rs17144465 with  $r^2 \geq 0.2$ )

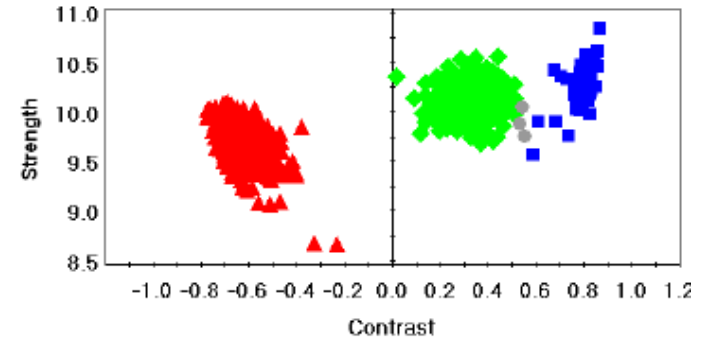


rs3844176 (tags rs644695 with  $r^2 \geq 0.1$ )

Figure S21: STAR\*D intensity plots for meta-analysis best SNPs (or tags) (continued)



rs594372 (tags rs644695 with  $r^2 \geq 0.1$ )



rs1444106 (tags rs17077540 with  $r^2 \geq 0.05$ )

**Figure S21: STAR\*D intensity plots for meta-analysis best SNPs (or tags) (continued)**