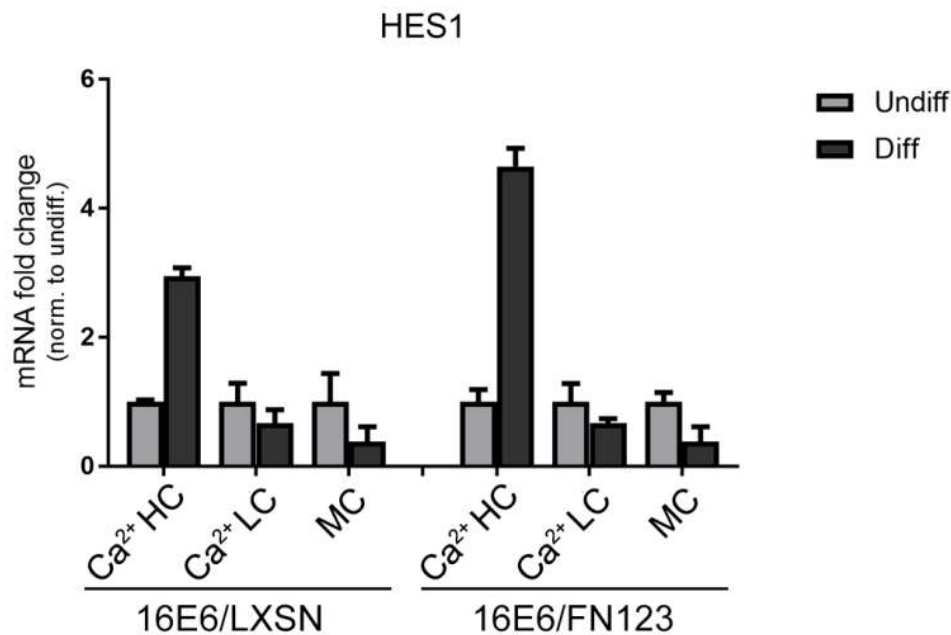


A

Supplementary Figure 2. Induction of canonical Notch1 pathway gene Hes1 with differentiation stimuli. (A and B) 1×10^6 16E6/LXSN and 16E6/FN123 HFKs were plated and treated with 1.8mM Ca^{2+} for 0 or 72 hours (Ca^{2+} HC); 3×10^5 16E6/LXSN and 16E6/FN123 HFKs were plated and were treated with 1.8mM Ca^{2+} for 0 or 72 hours (Ca^{2+} LC); 1×10^6 16E6/LXSN and 16E6/FN123 HFKs were suspended in methylcellulose (MC) for 0 or 24 hours. Total mRNA was collected for each. mRNA levels of Hes1 were measured by qPCR and normalized to each undifferentiated control. One representative experiment is shown from at least three conducted in biologically independent HFK cell lines. All qPCRs were normalized to the housekeeping gene 36B4, and all error bars represent 95% confidence intervals from replicates.