

## Supplementary Table 1.

Question	Results	Figure/ Table
What cells in the human omentum and human omental metastasis of ovarian cancer (OvCa) express fascin?	Mesothelial cells (HPMCs), cancer-associated fibroblasts (CAFs) and OvCa cells (higher at stromal-interface) express fascin in human omentum and omental metastases of OvCa. In primary tumors fascin expression is higher in the stromal compartment versus the cancer compartment of tumors.	1a, 1b, ST1
Are fascin levels in OvCa tumors associated with survival or clinicopathologic data?	Fascin levels are negatively correlated with survival in non-serous OvCa patients. Fascin levels in serous papillary OvCa are not associated with survival of patients. Fascin levels were significantly correlated with histology type, pathology type and FIGO stage.	1c, 1d, S1, ST2, ST3
In culture, do HPMCs, CAFs and OvCa cells express fascin?	HPMCs, CAFs and OvCa cells express fascin. OvCa cells express fascin at different levels. The cell lines used in this manuscript express high (Tyk-nu), medium (HeyA8), low (Ovcar5) and no (Snu119) fascin.	2a, 2b, 2c
Does inhibition or knockdown of fascin effect OvCa or stromal cell adhesion, migration, invasion, proliferation, viability or apoptosis?	Inhibition of fascin with G2 or knockdown of fascin inhibits OvCa and stromal cell migration in multiple migration assays. Inhibition or knockdown of fascin does not effect cellular adhesion, invasion, viability or apoptosis.	migration:3a, 3b, 4a, 4b, 4c, 4d, 4e; adhesion: S2a, S2b; invasion: S3a, S3b, S3c, S3d; proliferation: S4a, S4b; viability: S5; apoptosis: S6
Does inhibition of fascin block actin-bundling?	Inhibition of fascin with G2 blocks actin-bundling.	5a
Does inhibition of fascin block GTPase activity?	Inhibition of fascin with G2 inhibits CDC42 and Rac1 GTPase activity	5b, 5c, 5d, 5e
Does inhibition or knockdown of fascin effect OvCa metastasis?	Knockdown of fascin in OvCa cells inhibits metastasis to a lesser extent than treatment with the fascin inhibitor, G2. Inhibition of fascin with G2 blocks OvCa metastasis and prevents OvCa metastasis to the mouse omentum. Inhibition of fascin with G2 blocks OvCa colonization of human omentum in ex vivo culture.	6a, 6b, 6c, 4f
Does inhibition or knockdown of fascin in vivo effect OvCa proliferation, OvCa apoptosis or angiogenesis in tumors?	Knockdown of fascin in OvCa cells increased proliferation and apoptosis in OvCa cells in vivo, while no effect on vessel formation was detected. Inhibition of fascin with G2 has no effect on OvCa cell proliferation, OvCa cell apoptosis or vessel formation in vivo.	S7a, S7b

## Supplementary Table 2.

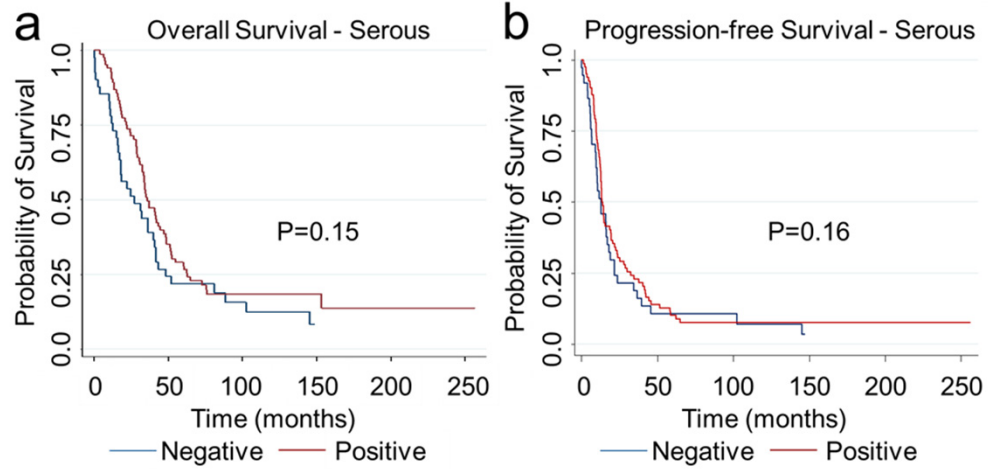
<b>Cancer Fascin Expression Score (Mean)</b>	<b># of Patients</b>	<b>Percentage of Patients</b>
0	76	37.8
0.5	16	8.0
1	36	17.9
1.5	5	2.5
2	38	18.9
2.5	4	2.0
3	26	12.9
Total	201	100

<b>Stroma Fascin Expression Score (Mean)</b>	<b># of Patients</b>	<b>Percentage of Patients</b>
0	12	6.0
0.5	2	1.0
1	61	30.3
1.5	15	7.5
2	59	29.3
2.5	17	8.5
3	35	17.4
Total	201	100

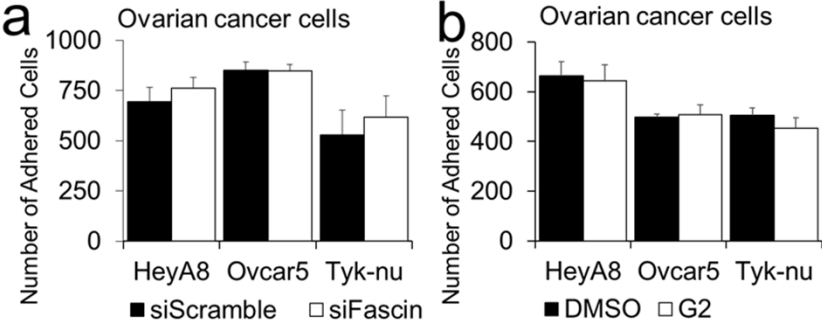
### Supplementary Table 3.

	Overall (n=201)	Negative (0) (n=76)	Positive (>0) (n=125)	P value
Tumor Site				0.31
Fallopian Tube	22 (10.9)	5	17	
Ovary	170 (84.6)	68	102	
Peritoneum	9 (4.5)	3	6	
Histology type				0.002
ccc-ovary	17 (8.5)	12	5	
endom ca-ovary	21 (10.4)	8	13	
ftp-fal tube	21 (10.4)	5	16	
muc ca-ovary	10 (5.0)	8	2	
ppp-perit	7 (3.5)	2	5	
serpap ca-ovary	125 (62.2)	41	84	
Pathology type				<0.001
Clear cell	16 (8.0)	12	4	
Endom	21 (10.4)	7	14	
Mucinous	11 (5.5)	9	2	
Serpap	153 (76.1)	48	105	
FIGO Stage				0.047
I	26 (12.9)	16	10	
II	9 (4.5)	2	7	
III	120 (59.7)	44	76	
IV	46 (22.9)	14	32	
Ascites Volume				0.65
No	105 (55.3)	37	68	
Yes	85 (44.7)	33	52	
Chemo Class				0.56
Gemcitabine	2 (1.1)	1	1	
Other/Platinum	2 (1.1)	1	1	
Phase 1	3 (1.6)	2	1	
Platinum only	6 (3.3)	1	5	
Taxane Taxane/Platinum	2 (1.1)	0	2	
	168 (91.8)	58	110	
Grade				0.32
G1	10 (5.0)	6	4	
G2	44 (21.9)	17	27	
G3	147 (73.1)	53	94	
Platinum Sensitivity				0.67
Resistant	71 (39.4)	22	49	
Sensitive	82 (45.6)	31	51	
Intermediate	27 (15.0)	9	18	
Residual Tumor				0.55
> 1cm	74 (36.8)	30	44	
≤ 1cm	127 (63.2)	46	81	
Chemo Type				1.00
Adjuvant/1 <sup>st</sup> line	155 (84.7)	53	102	

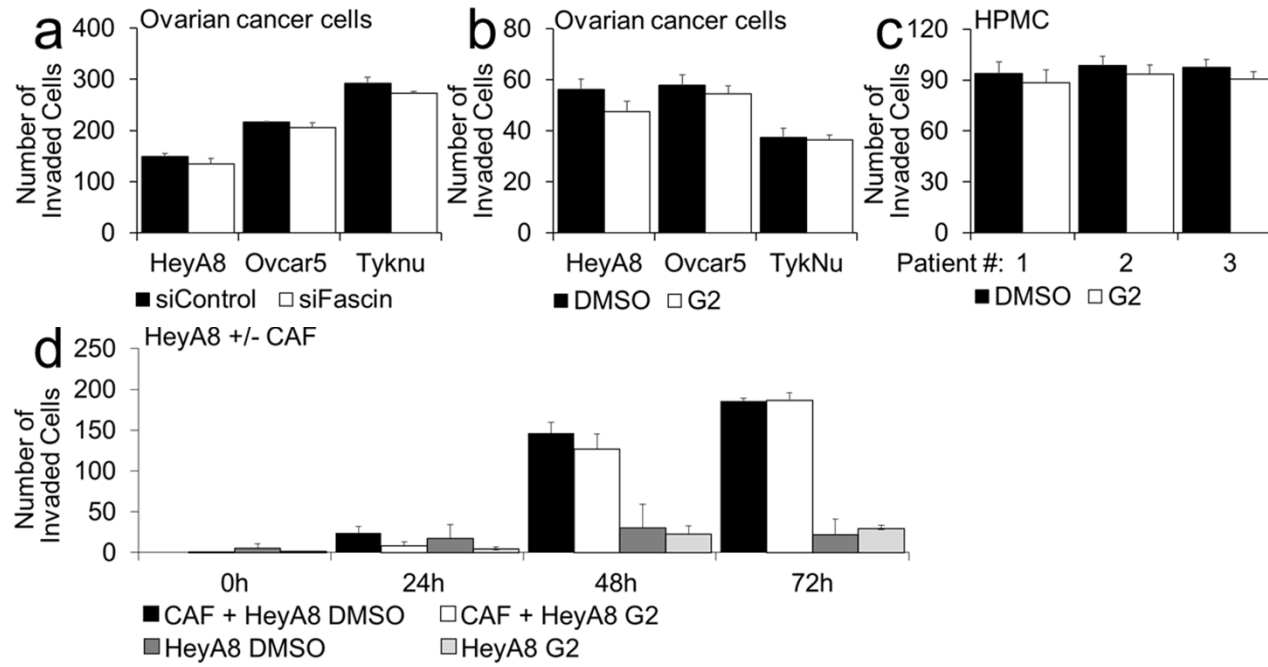
# Supplementary Figure 1.



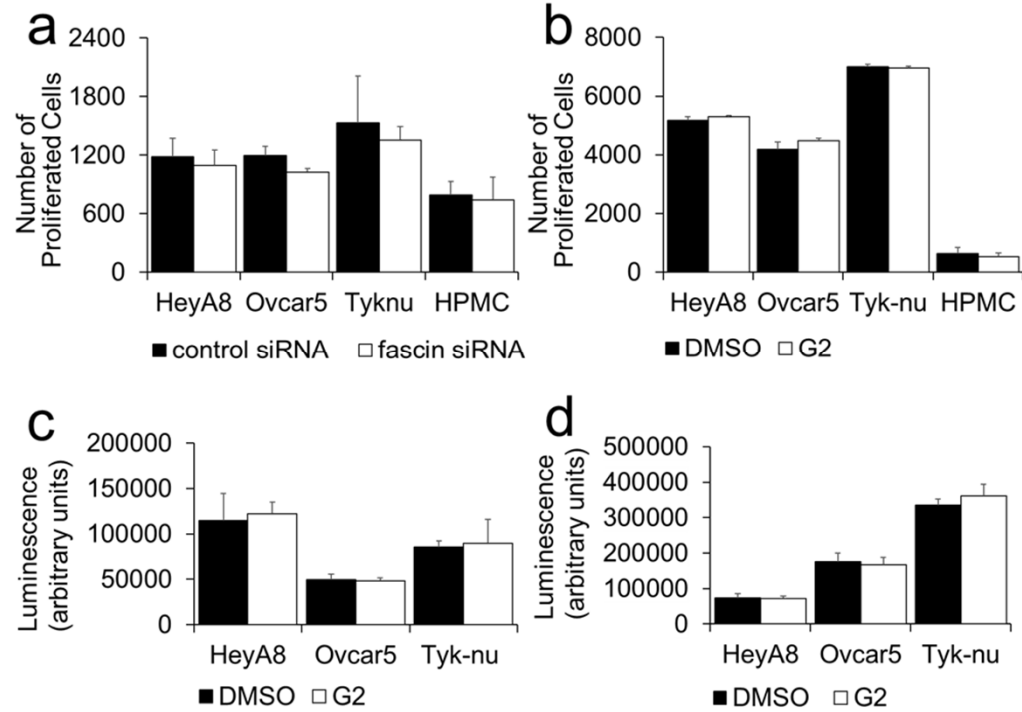
# Supplementary Figure 2.



## Supplementary Figure 3.



## Supplementary Figure 4.



## Supplementary Figure 5.

