

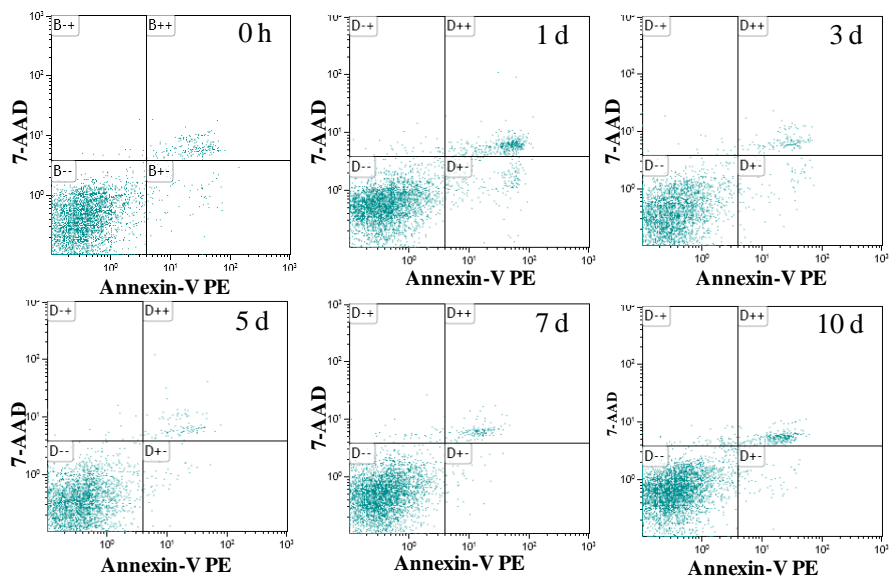
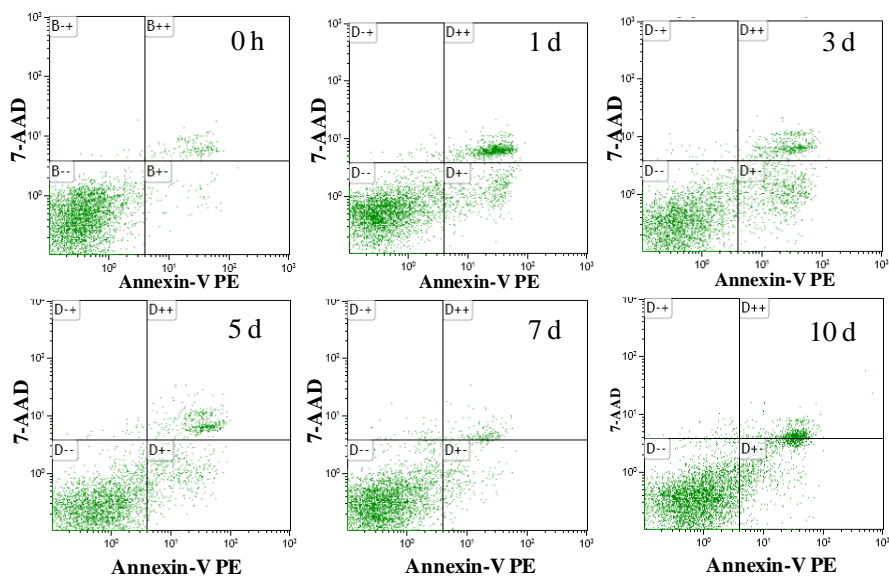
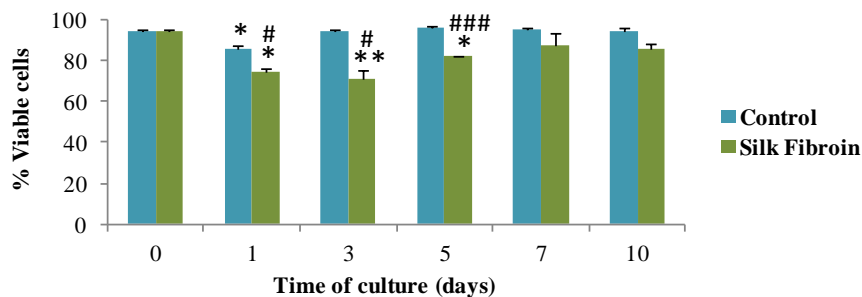
A**Control****Silk Fibroin****B**

Fig. S2. Viability of Wj-MSCs cultured on electrospun SF scaffolds for different times. **(A)** Percentages of Annexin-V/7-AAD⁺ cells were analyzed by flow cytometry. **(B)** Percentage of viable cells significantly decreased compared to values obtained at time 0 ($*p < 0.05$, $**p < 0.01$), according to one-way ANOVA. Also, percentages of viable cells significantly decreased after culture on SF patches compared to the control group at each time point ($#p < 0.05$, $###p < 0.001$). Results are shown as mean \pm SD of three independent experiments performed in triplicates.