

Supplemental Online Content

Jack SM, Boyle M, McKee C, et al. Effect of addition of an intimate partner violence intervention to a nurse home visitation program on maternal quality of life: a randomized clinical trial. *JAMA*. doi:10.1001/jama.2019.3211

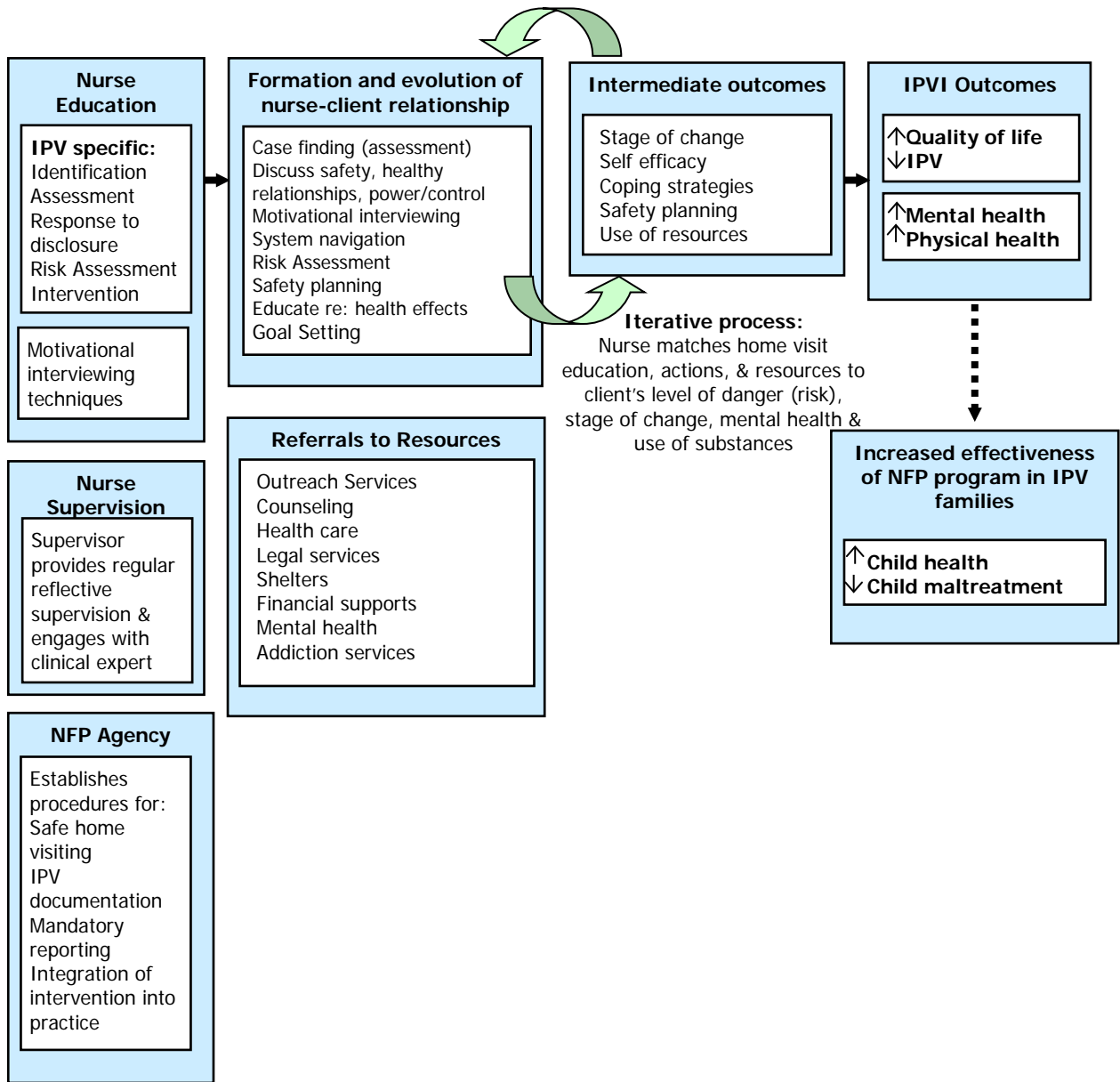
eFigure. Conceptual Model of Intimate Partner Violence Intervention

eTable. Intimate Partner Violence Intervention Characteristics

eReferences

This supplementary material has been provided by the authors to give readers additional information about their work.

eFigure. Conceptual Model of Intimate Partner Violence Intervention



eTable. Intimate Partner Violence (IPV) Intervention Components

Process of Recognizing and Responding to IPV	Intervention Activity	Tools/Resources Used
Identification and Assessment	<ul style="list-style-type: none"> • Universal assessment of safety completed with all women in pregnancy (around 4th home visit) to discuss and explore: childhood experiences, social supports (number, quality and type), feelings of safety in intimate relationships, and attributes of healthy/unhealthy relationships. • With no IPV disclosure, guidance to repeat Universal assessment of safety during postpartum period, and when child 16 months of age. • Guidance for indicator-based (case-finding) assessments provided to nurses to prompt assessment for IPV upon observation of IPV associated risk indicators, clinical signs and symptoms, or behavioral cues (e.g. increased use of health care services, pattern of cancelled visits) • Guidance for responding to client initiated IPV disclosures 	<ul style="list-style-type: none"> • Life history calendar • Ecomap • Power and Control Wheel • Equality Wheel
“Diagnosis” or confirmation of experiences of past/current IPV	<ul style="list-style-type: none"> • Conduct assessment of IPV experiences • Documentation • Provide empathic response to disclosures of IPV experiences (e.g. actively listen, addressing immediate concerns, identify strengths, validate experiences, offer support not advice) 	<ul style="list-style-type: none"> • Clinical IPV assessment • Community resource card • Guidance for providing immediate empathic response
For clients who disclose current or past history of IPV - development of tailored, client-centred, plan of care to respond to IPV	<ul style="list-style-type: none"> • Risk and lethality assessment • Modified brief empowerment intervention¹, including tailored safety planning and discussion of cycle of abuse • Mental health assessment and referrals • Substance use assessment and referrals • Identification of client stage of readiness to address safety 	<ul style="list-style-type: none"> • Danger Assessment² • Cycle of Abuse • Mental health assessments (e.g. PHQ-9³, Edinburgh Postnatal Depression Scale⁴) • Substance use (home visitation program specific) assessment tool • Community resource card • Woman’s stories of strength and survival (mapped to Domestic Survivor Assessment Tool⁵)
Process of Recognizing and Responding to IPV	Intervention Activity	Tools/Resources Used
Tailored Intervention – timing, number and type of activities tailored to client’s stage of readiness to address safety, level of danger, presence of mental health or substance use issues and client-expressed needs	<ul style="list-style-type: none"> • Motivational interviewing • Safety planning • Education about IPV and health effects on women and infants • Goal setting • System navigation- provide instrumental support (as required) to facilitate referral process to range of domestic violence, health, or social services, advocate for client access to services, accompany client to appointment, provide assistance in preparing for meeting etc. • Anticipatory guidance 	<ul style="list-style-type: none"> • Safety planning tools (tailored to client context and social situation) • IPV educational content about related reproductive/maternal/infant health effects of exposure to IPV • Goal setting activities to promote self-efficacy (home visitation guidelines & facilitators) • Review process/goals for accessing community resources

eReferences

1. McFarlane J, Parker B, Moran BA. Abuse during pregnancy: a protocol for prevention and intervention (2nd ed). March of Dimes; White Plains, NY.
2. Campbell J, Webster D, Glass N. The Danger Assessment: validation of a lethality risk assessment instrument for intimate partner femicide. *J Interpers Violence*. 2009;24:4653-674.
3. Kroenke K, Spitzer RL, Williams JB. The PHQ-9: validity of a brief depression severity measure. *J Gen Intern Med*. 2001;16(9):606-13.
4. Cox JL, Holden JM, Sagovsky R. Detection of postnatal depression. Development of the 10-item Edinburgh Postnatal Depression Scale. *Br J Psychiatry*. 1987;150(6):782-6.
5. Dienemann J, Campbell J, Landenburger K, Curry MA. The domestic violence survivor assessment: a tool for counseling women in intimate partner violence relationships. *Patient Educ Counsel* 2002; 46: 221-8.