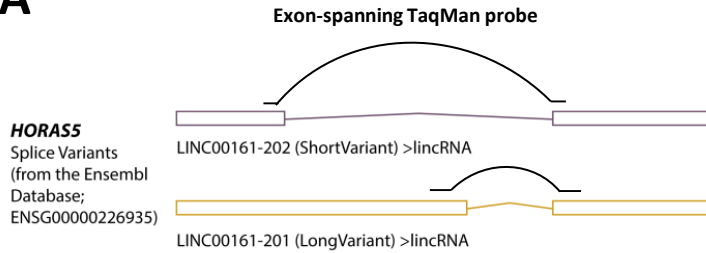
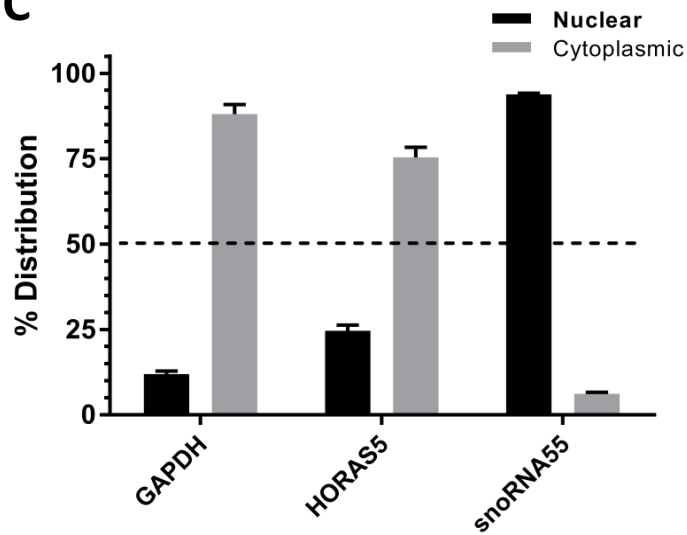
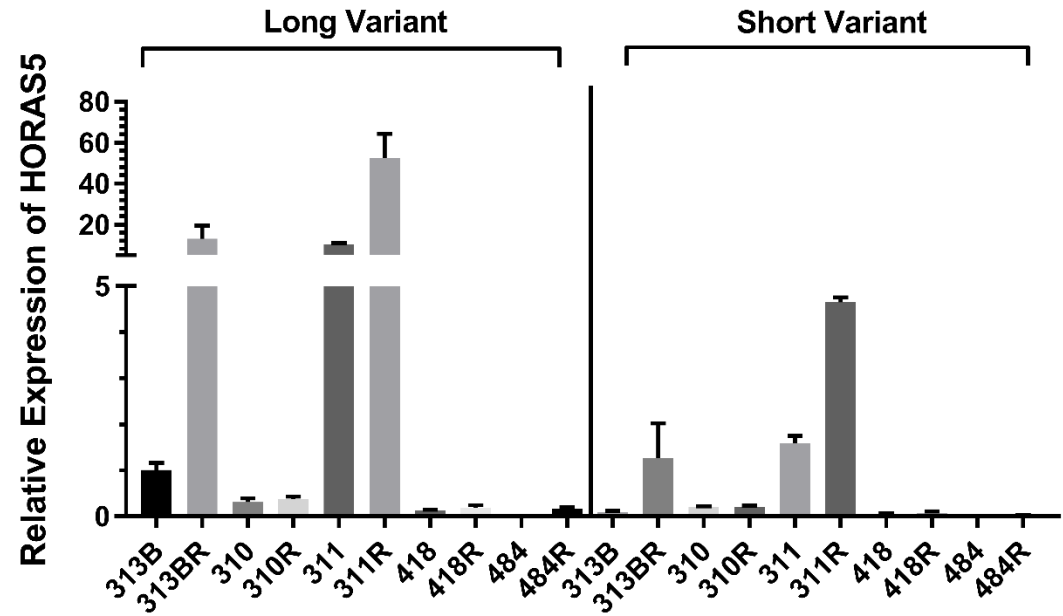


**A****C****B**

**Supplementary Figure 3: Expression of Long and short *HORAS5* splice variants in PCa cell lines and LTL PDXs.** (A) Schematic showing the two *HORAS5* splice variants and the exon-spanning TaqMan probes used for qPCR to distinguish the two variants. (B) Basal expression (TaqMan qPCR) of both *HORAS5* transcript variants in 5 different paired hormone-sensitive/-resistant LTL PDXs. Data is plotted as mean  $\pm$  S.D. from a representative sample and is normalized to the *HORAS5* long transcript variant expression in the 313B sample for clarity. (C) qPCR expression of *HORAS5* in the nuclear and cytoplasmic sub-cellular fractions of AR-positive C4-2 cells. *GAPDH* and *snoRNA55* are used as controls for cytoplasmic and nuclear fractions, respectively. Results from two independent experiments are plotted.