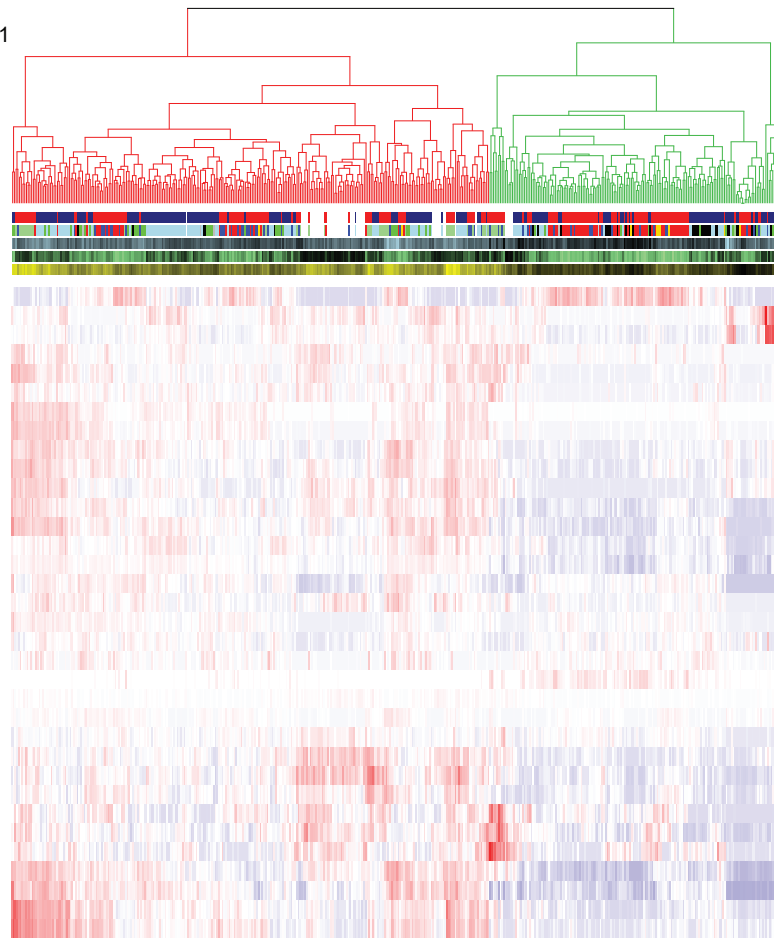
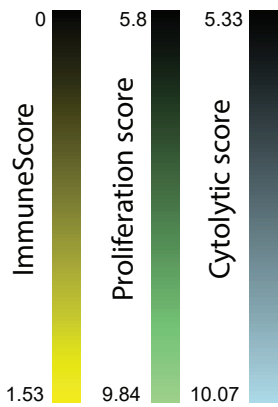
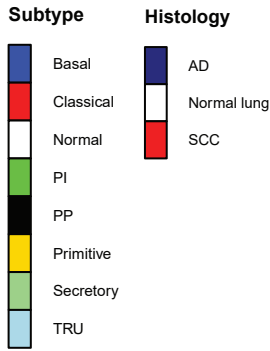
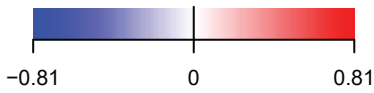


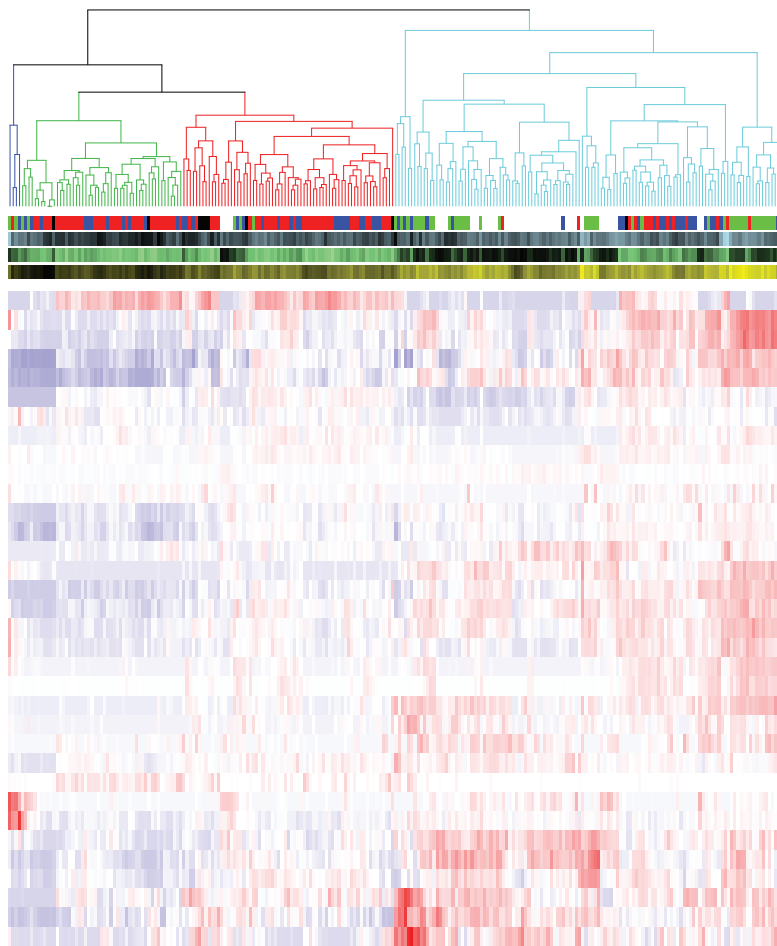
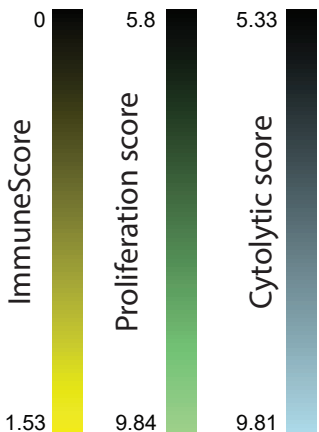
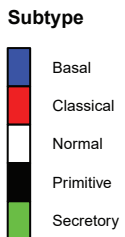
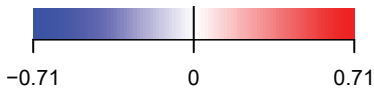
### A: All samples



Histology (P = 2e-04)  
 Subtype (P = 2e-04)  
 Cytolytic score (P = 6.491e-26)  
 Proliferation score (P = 8.495e-12)  
 ImmuneScore (P = 8.969e-77)

- B-cells
- Class-switched memory B-cells
- CD4+ memory T-cells
- CD8+ Tem
- Basophils
- NKT
- Eosinophils
- Macrophages
- Macrophages M2
- Monocytes
- Neutrophils
- Macrophages M1
- Mast cells
- CD8+ naive T-cells
- Plasma cells
- Th2 cells
- pro B-cells
- NK cells
- Tgd cells
- aDC
- DC
- CD4+ T-cells
- pDC
- CD4+ Tem
- CD8+ T-cells
- CD8+ Tcm
- Memory B-cells
- naive B-cells
- Tregs
- CD4+ naive T-cells
- CD4+ Tcm
- iDC
- cDC
- Th1 cells

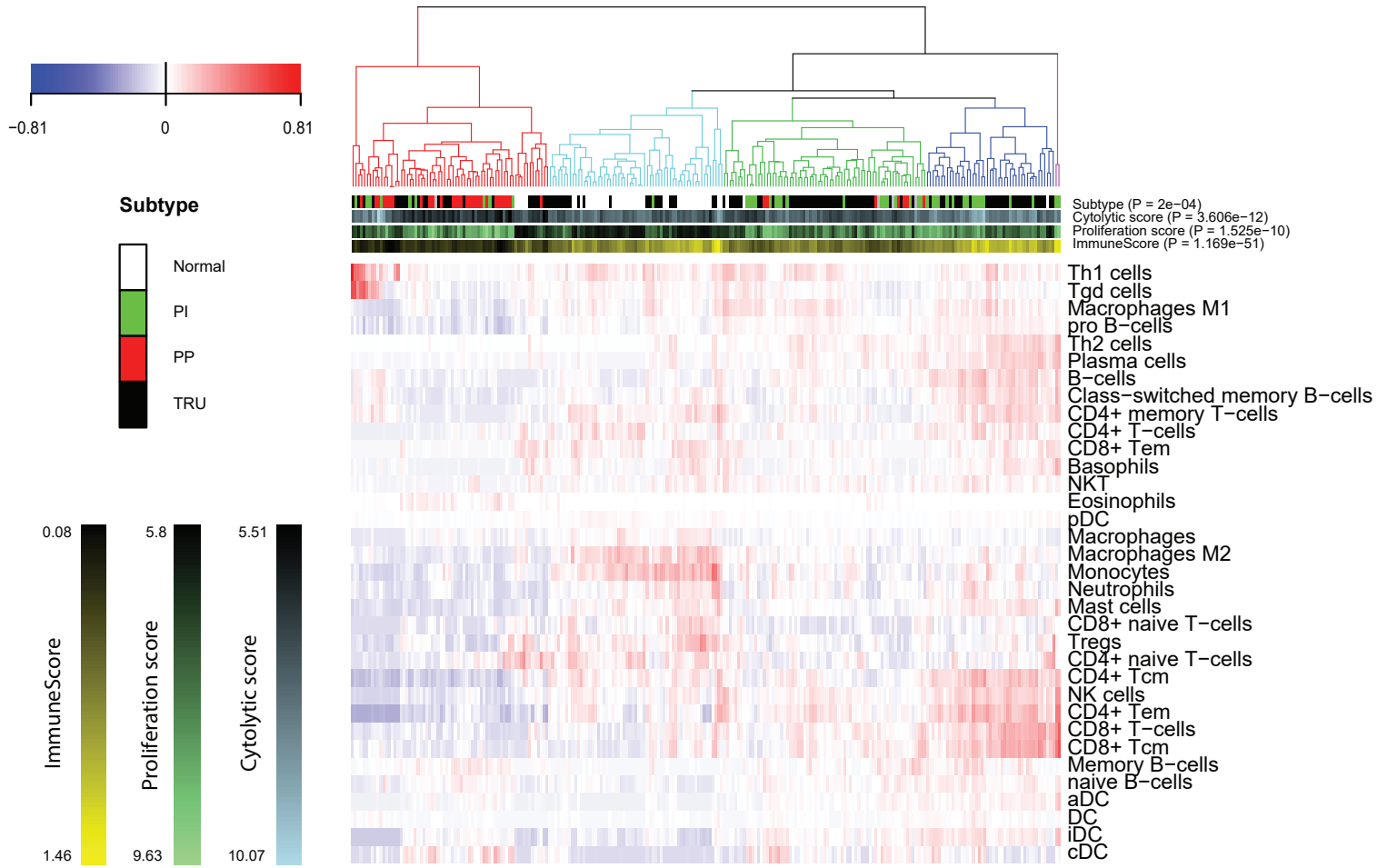
### B: Squamous cell carcinoma



Subtype (P = 2e-04)  
 Cytolytic score (P = 5.516e-13)  
 Proliferation score (P = 1.625e-30)  
 ImmuneScore (P = 1.066e-26)

- Basophils
- NKT
- Eosinophils
- Macrophages
- Macrophages M2
- Monocytes
- iDC
- cDC
- CD8+ naive T-cells
- Neutrophils
- CD4+ Tcm
- Tregs
- CD4+ naive T-cells
- naive B-cells
- Memory B-cells
- CD8+ Tcm
- CD8+ T-cells
- pDC
- CD4+ T-cells
- CD4+ Tem
- NK cells
- aDC
- DC
- Plasma cells
- Mast cells
- Macrophages M1
- pro B-cells
- Th2 cells
- Tgd cells
- CD8+ Tem
- CD4+ memory T-cells
- Class-switched memory B-cells
- B-cells
- Th1 cells

### C: Adenocarcinoma



### D: All samples

