

Figure S1. Impact of age on GLAD.

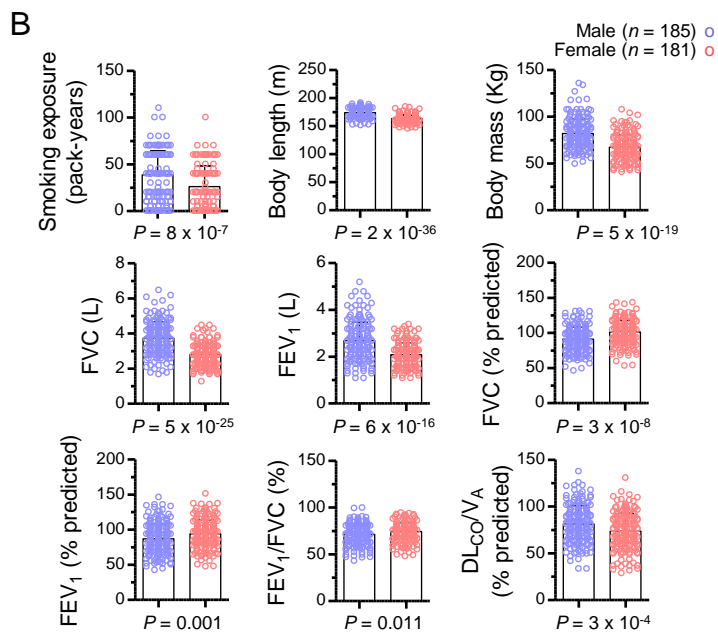
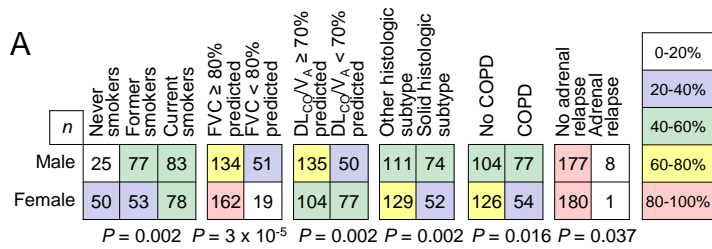


Figure S2. Associations with sex in the GLAD cohort.

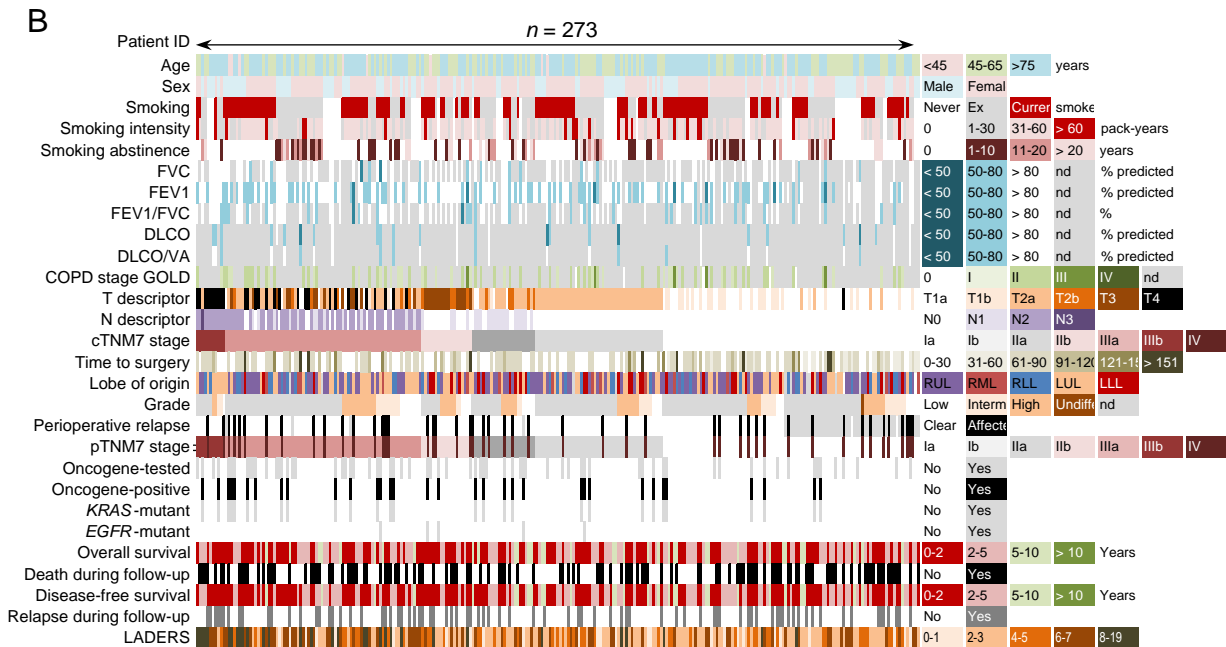
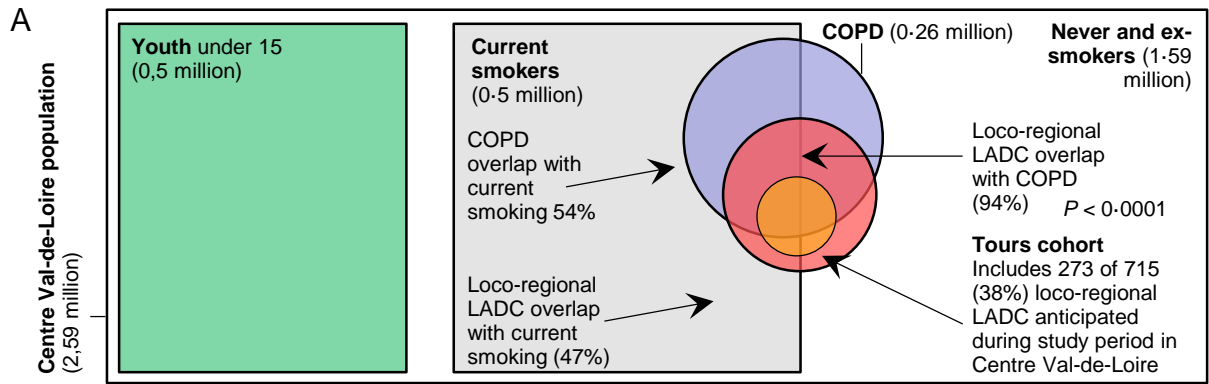


Figure S3. The Tours locoregional lung adenocarcinoma donors cohort.

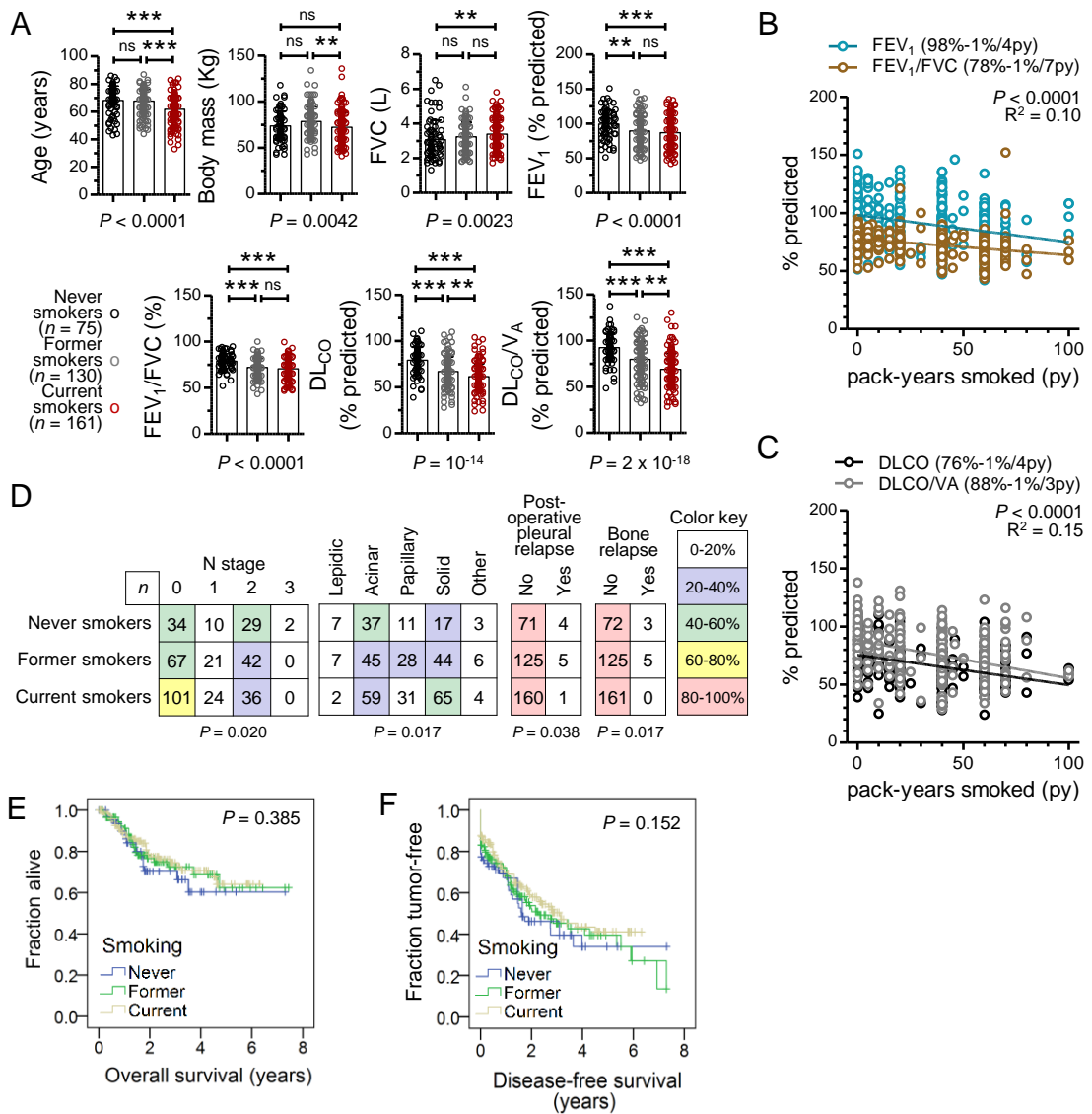


Figure S4. Smoking status, exposure, and effects in the GLAD cohort.

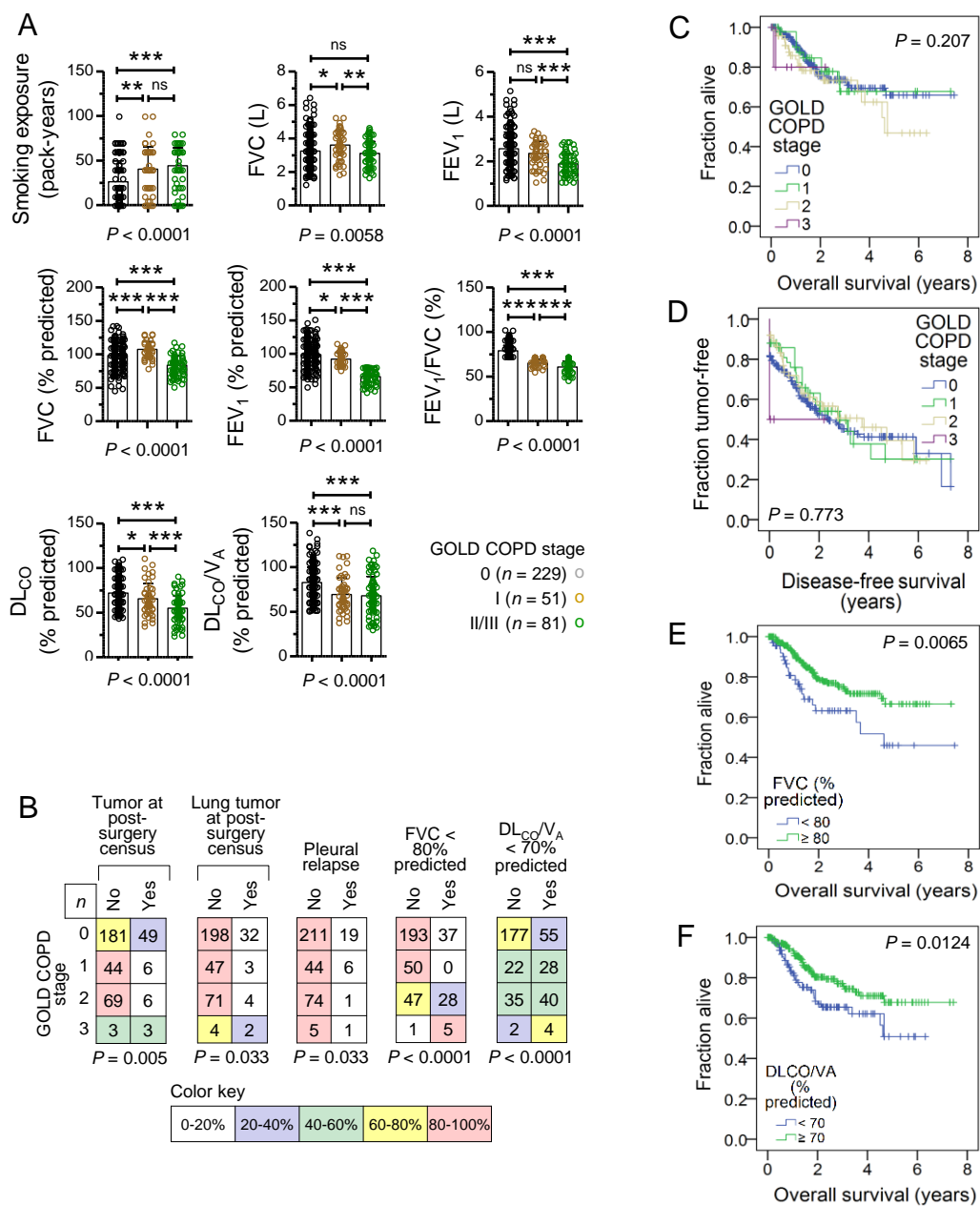


Figure S5. Chronic obstructive pulmonary disease (COPD) in the GLAD cohort.

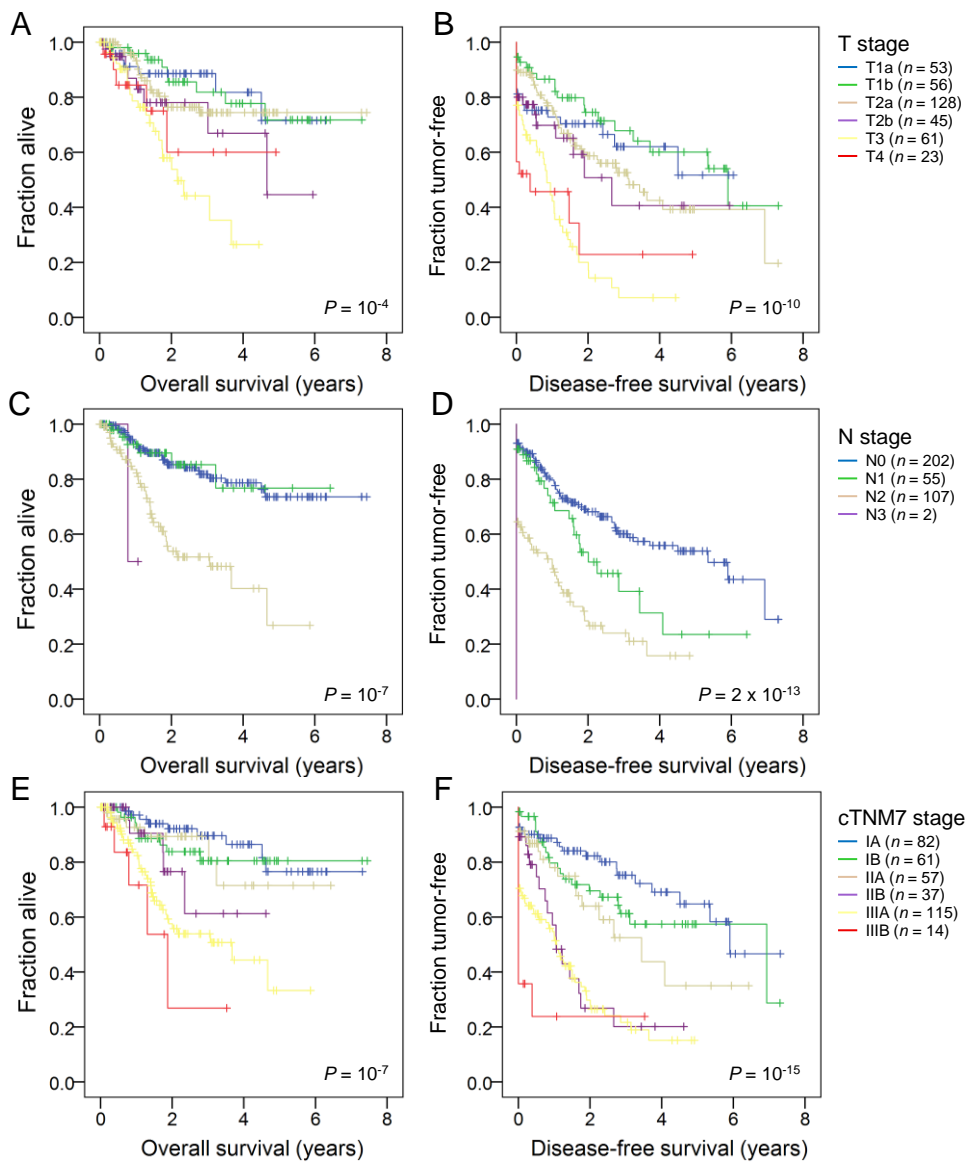


Figure S6. Validation of GLAD cTNM7 staging.

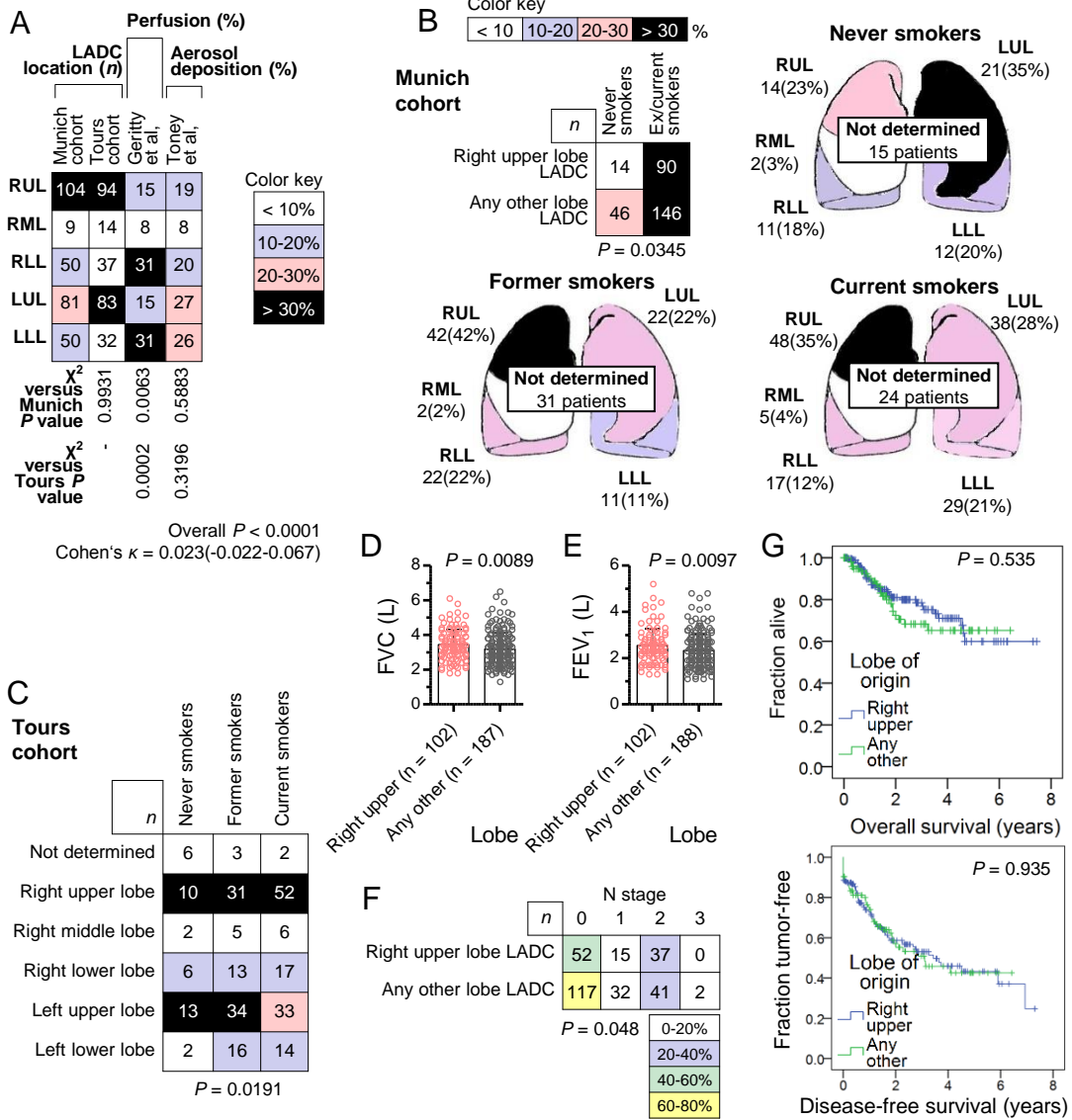


Figure S7. Tumor location on the GLAD and Tours cohorts.

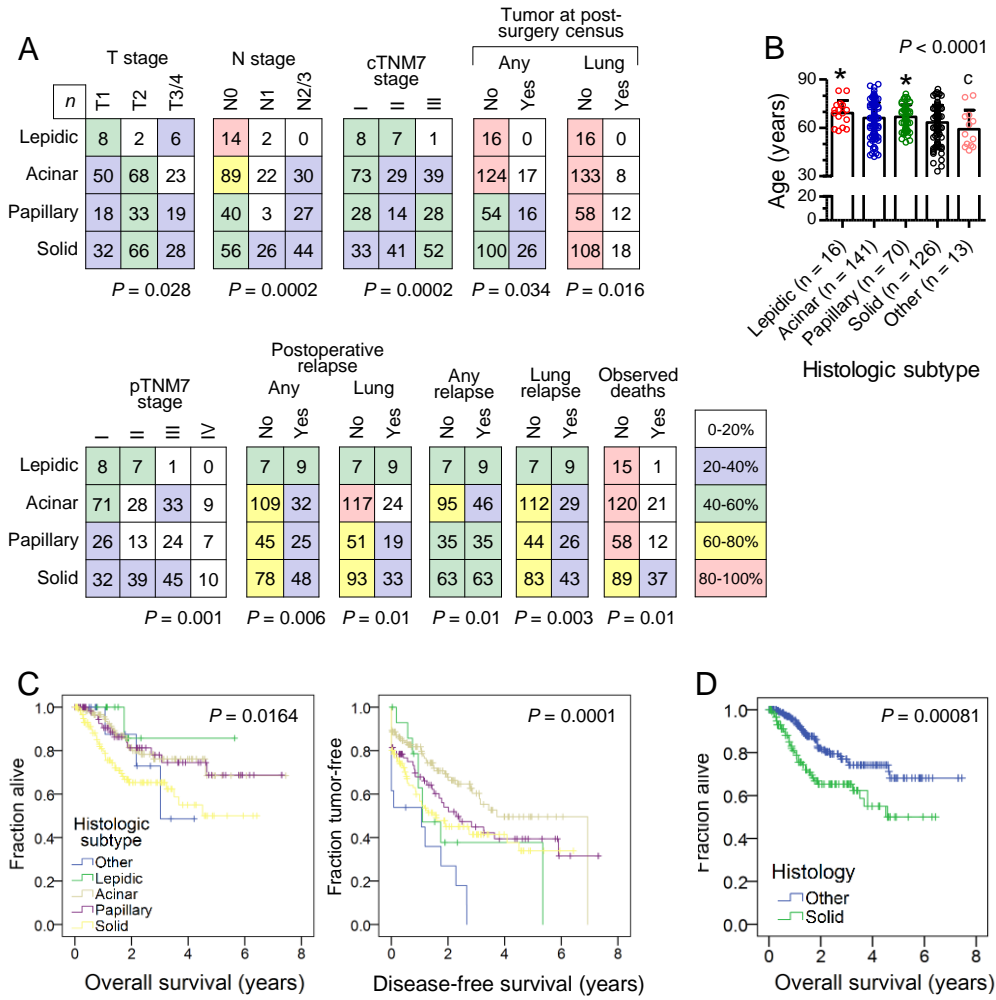


Figure S8. Impact of histologic subtype on outcomes in the GLAD cohort.

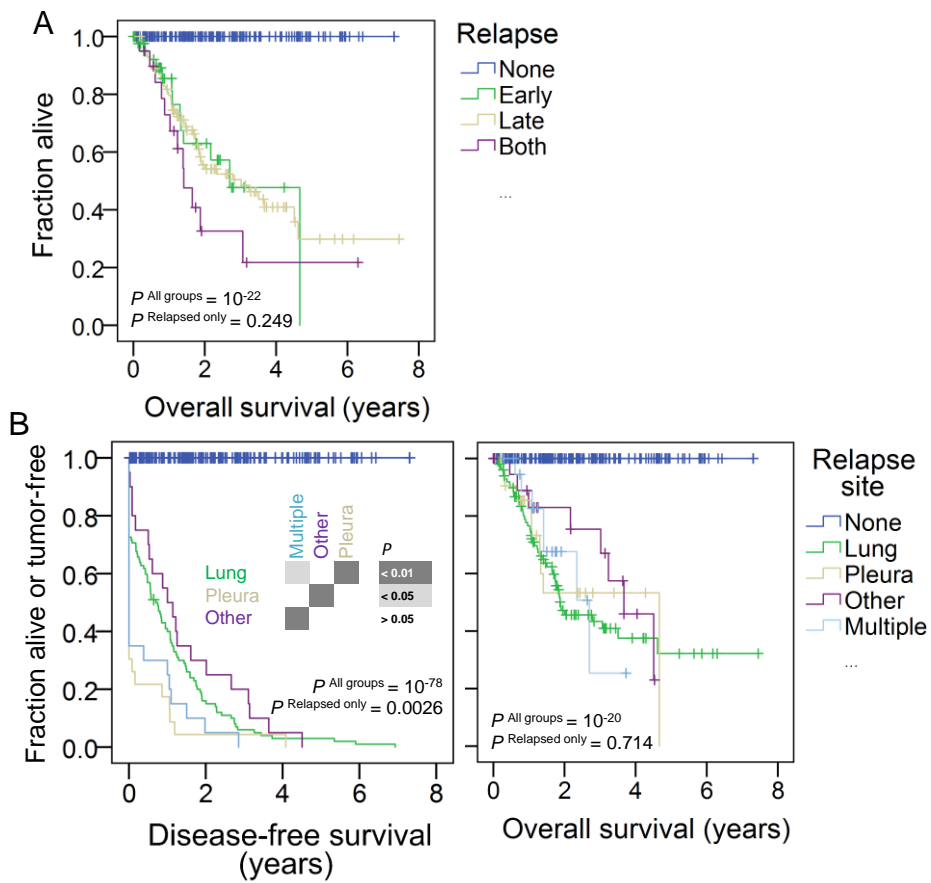


Figure S9. Patterns of relapse of GLAD..

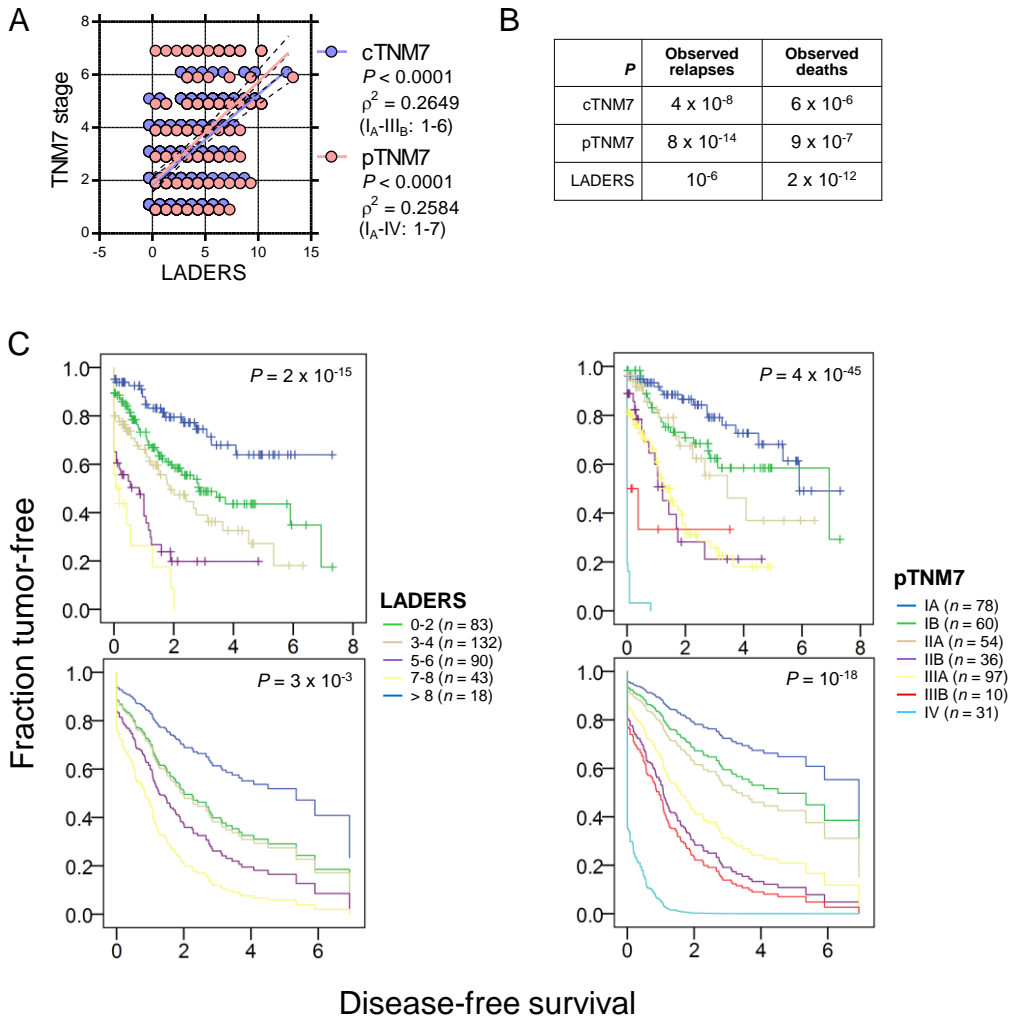


Figure S10. Comparison of the lung adenocarcinoma death risk score (LADERS) to TNM systems and their impact on disease-free survival.