

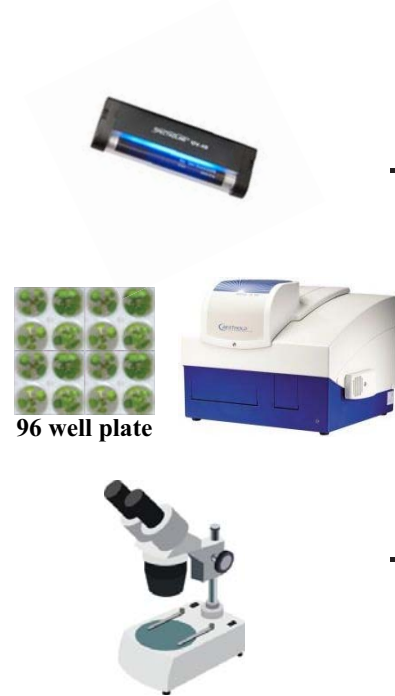
A. Generating a screening pool

Col-0 *pRAB18::GFP*
+ EMS (M1)

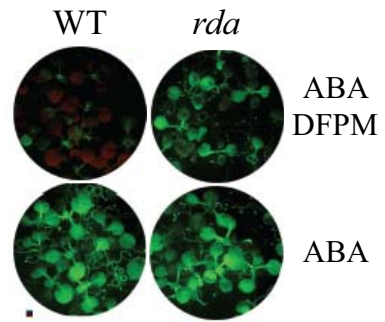
B. Screening for high GFP fluorescence

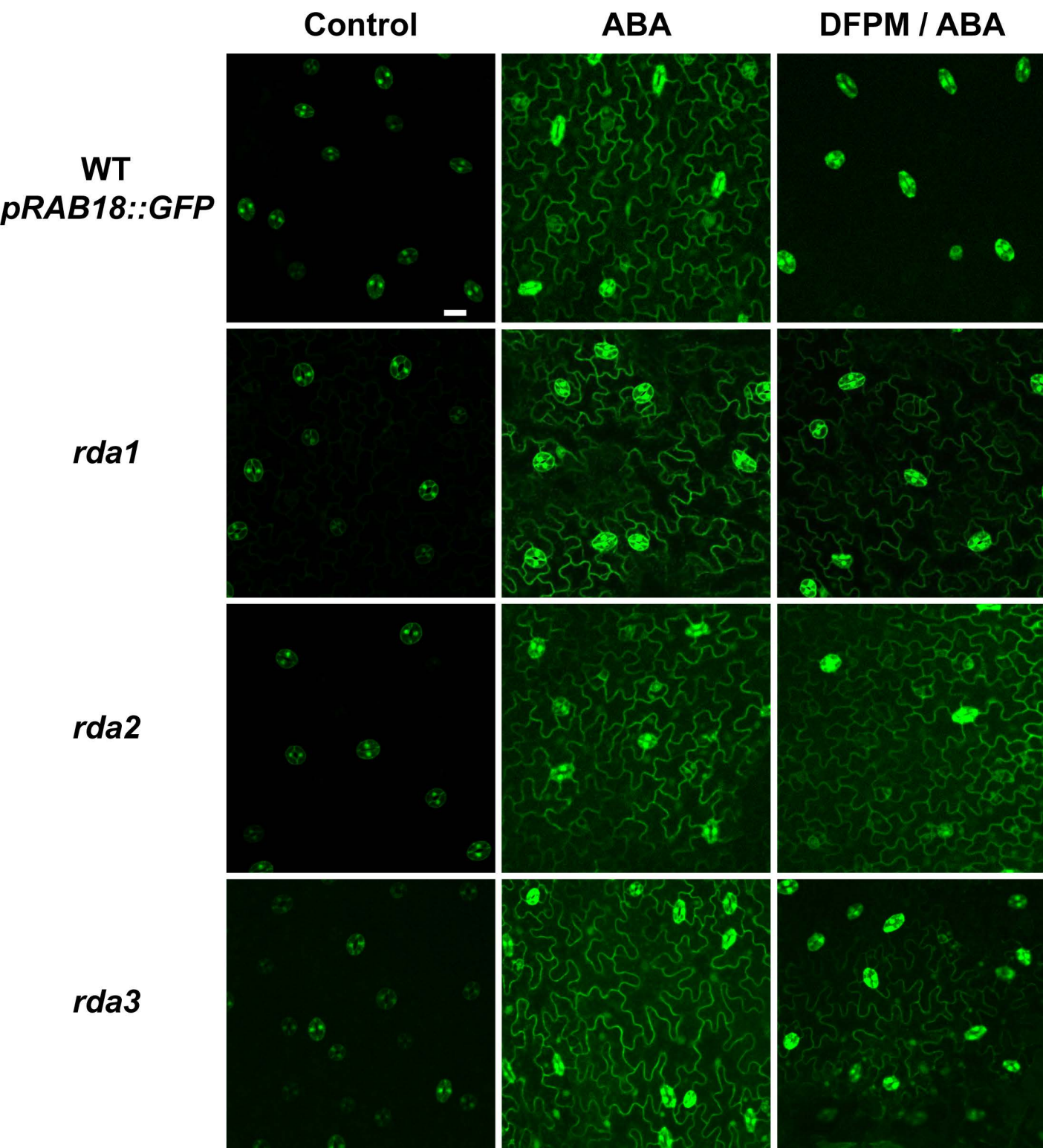
M2 plants
treated with ABA/DFPM

UV lamp
Microplate reader
Microscope



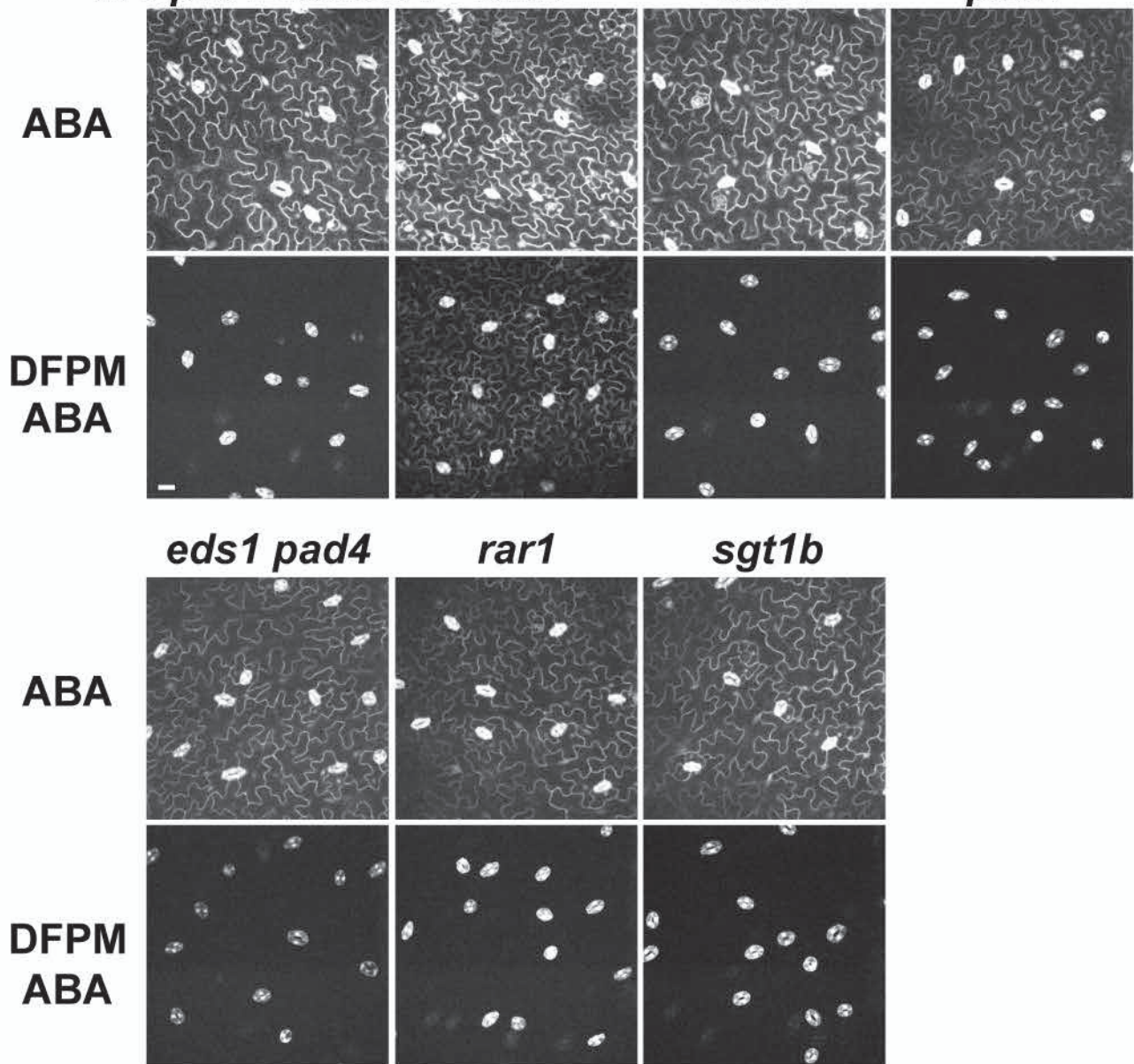
C. *rda* mutants



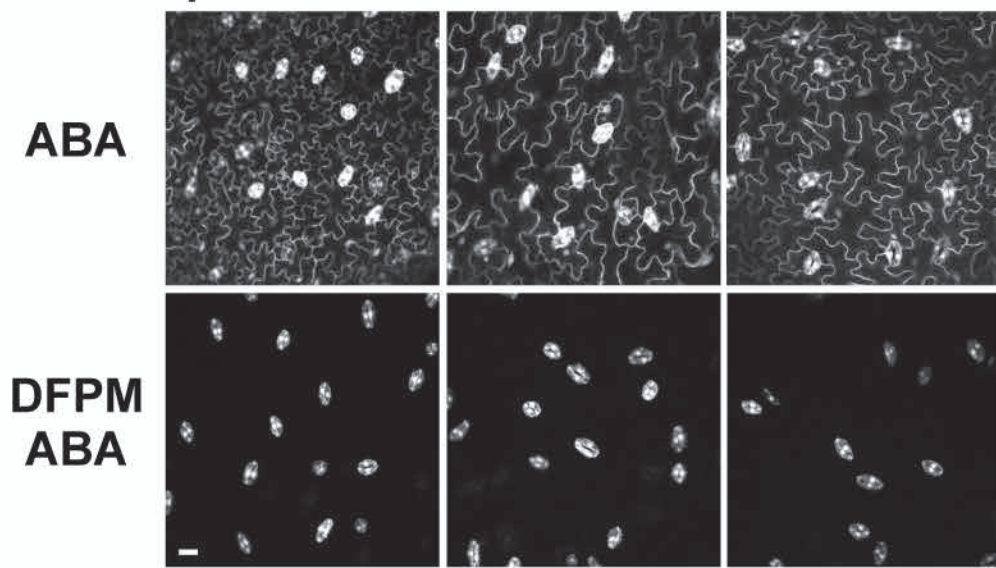


A

WT *pRAB18::GFP* *rda2* *eds1* *pad4*

**B**

WT *pRAB18::GFP* *vict1* *victl1*



A

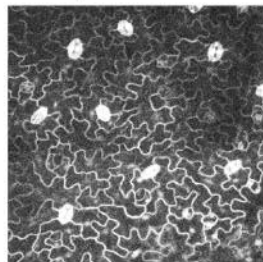
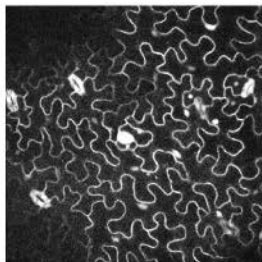
Mutants

At1g11330 (SALK_143489)

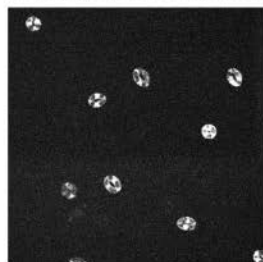
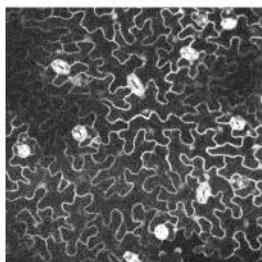
Crossed with

*x rda2**x WT pRAB18::GFP*

ABA



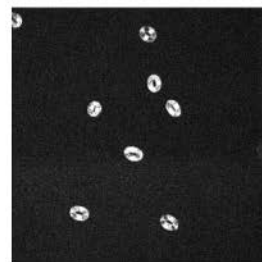
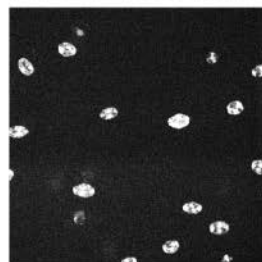
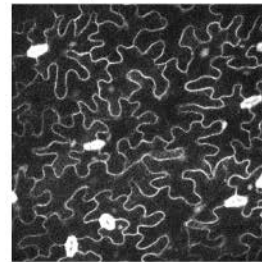
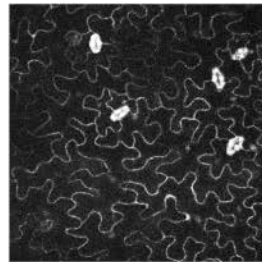
DFPM / ABA



(60/120)

(12/12)

B

At1g09750 (GABI_565C02)*x rda2**x WT pRAB18::GFP*

(30/30)

(4/4)

WT *pRAB18::GFP* ***rda2-1***

DFPM 0 15 30 60 0 15 30 60

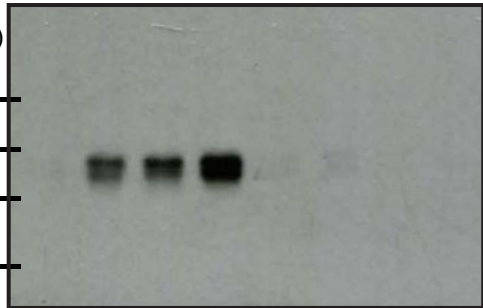
(kD)

75

50

37

25



α -phospho-p44/42 ERK



Membrane blot

WT ***rda2-2***

0 15 30 60 0 15 30 60 min

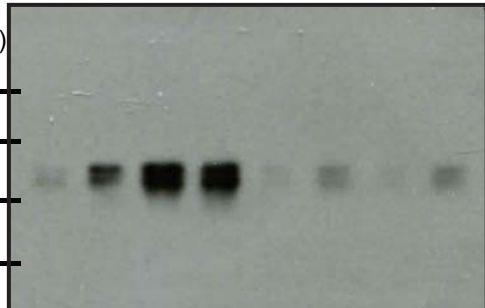
(kD)

75

50

37

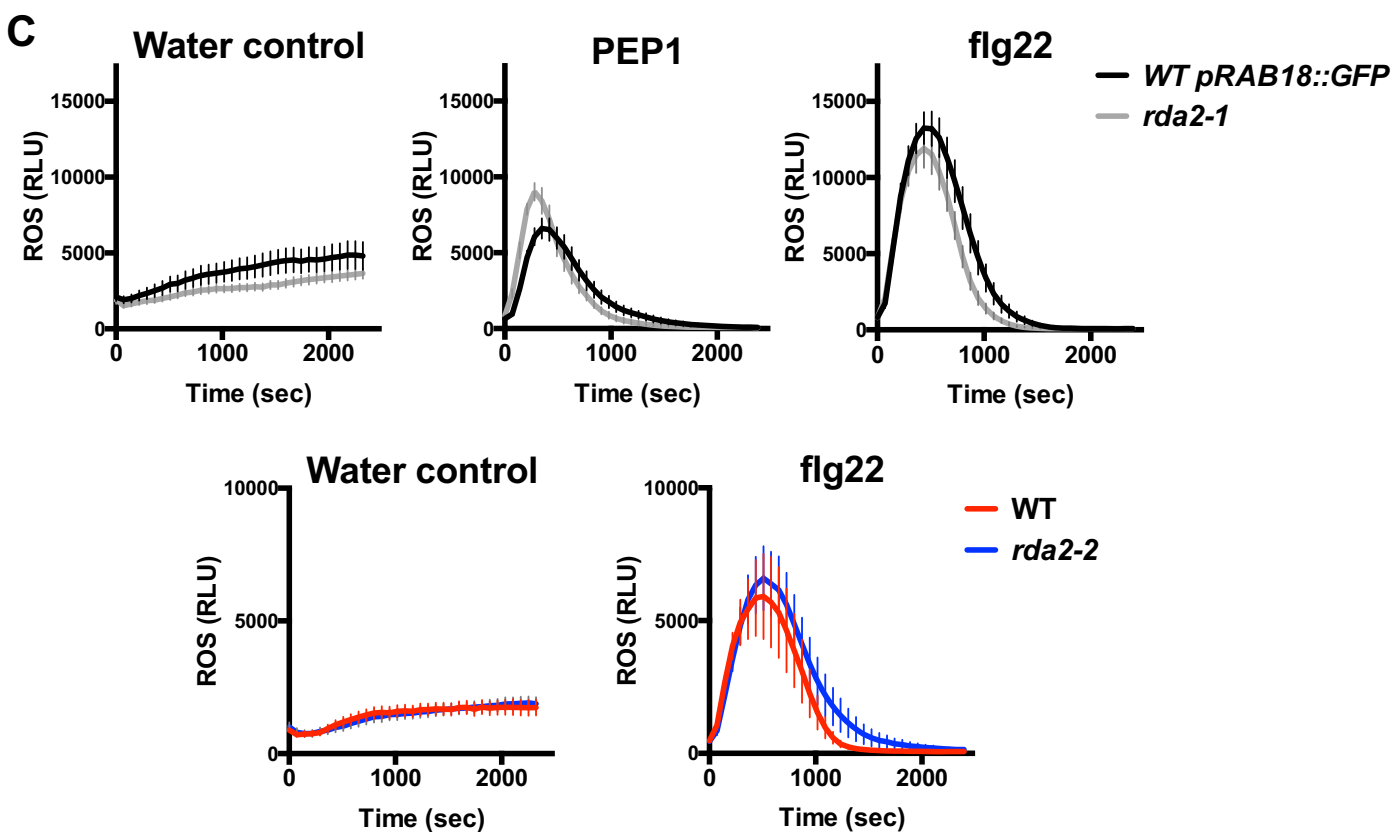
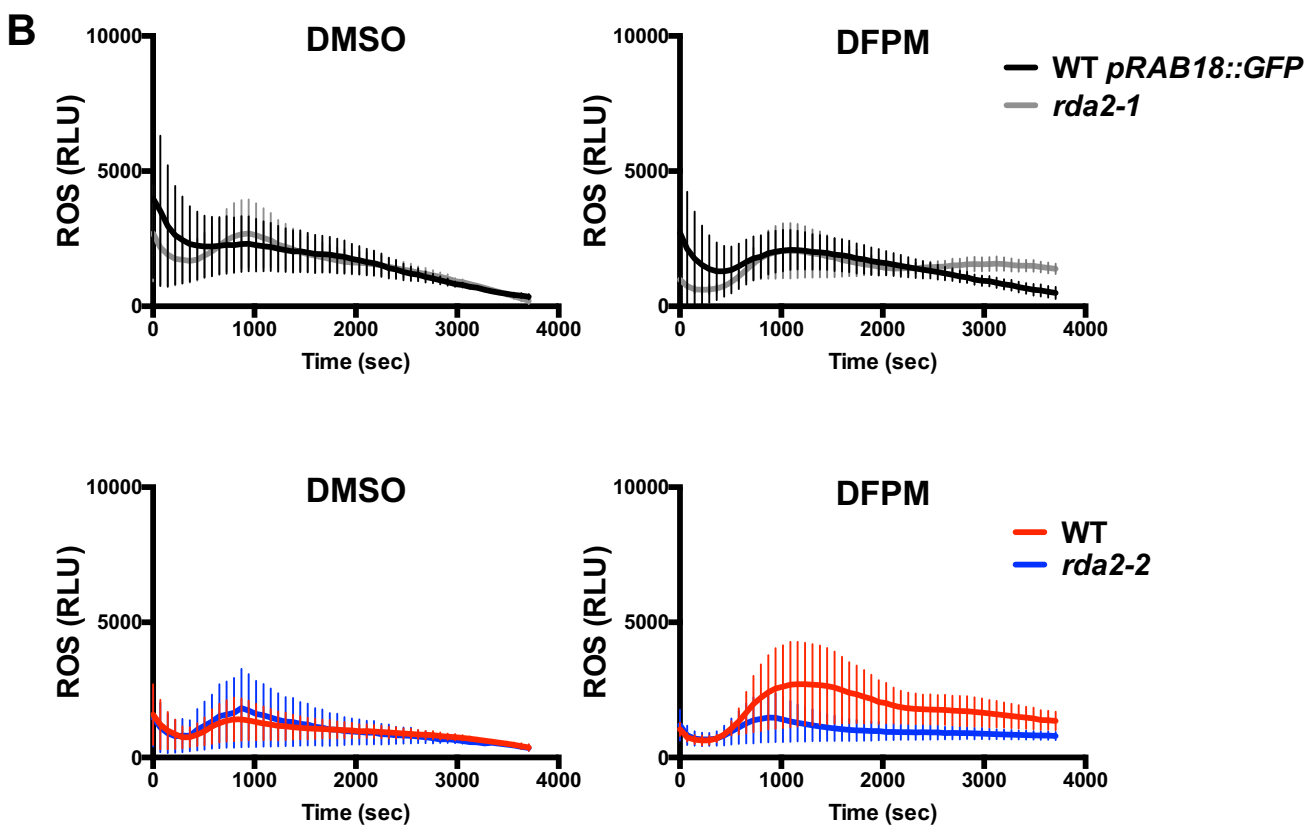
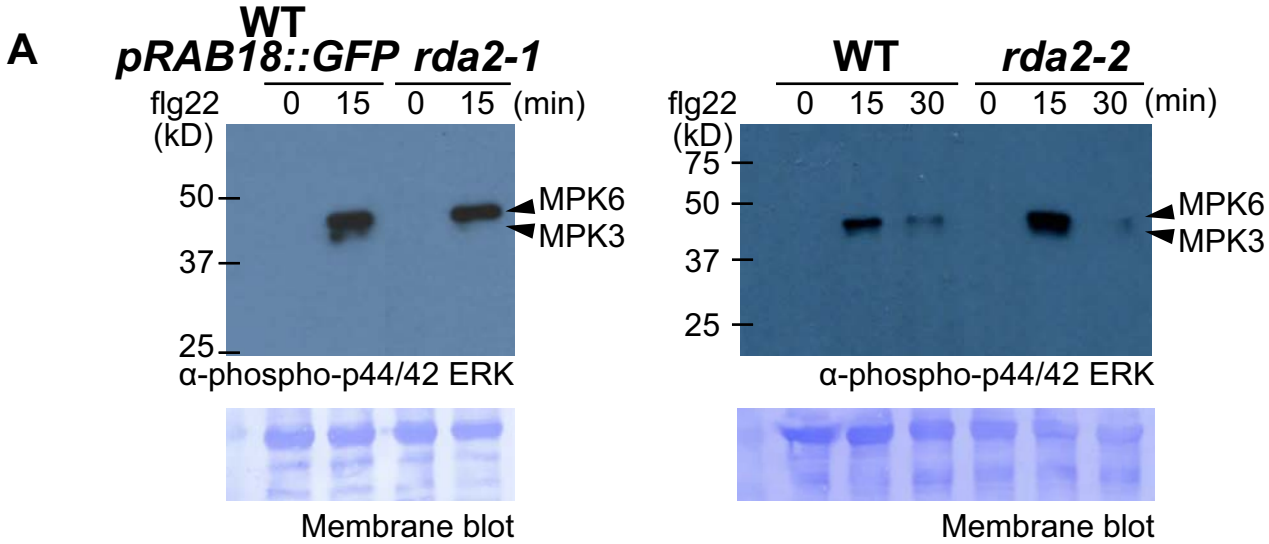
25



α -phospho-p44/42 ERK

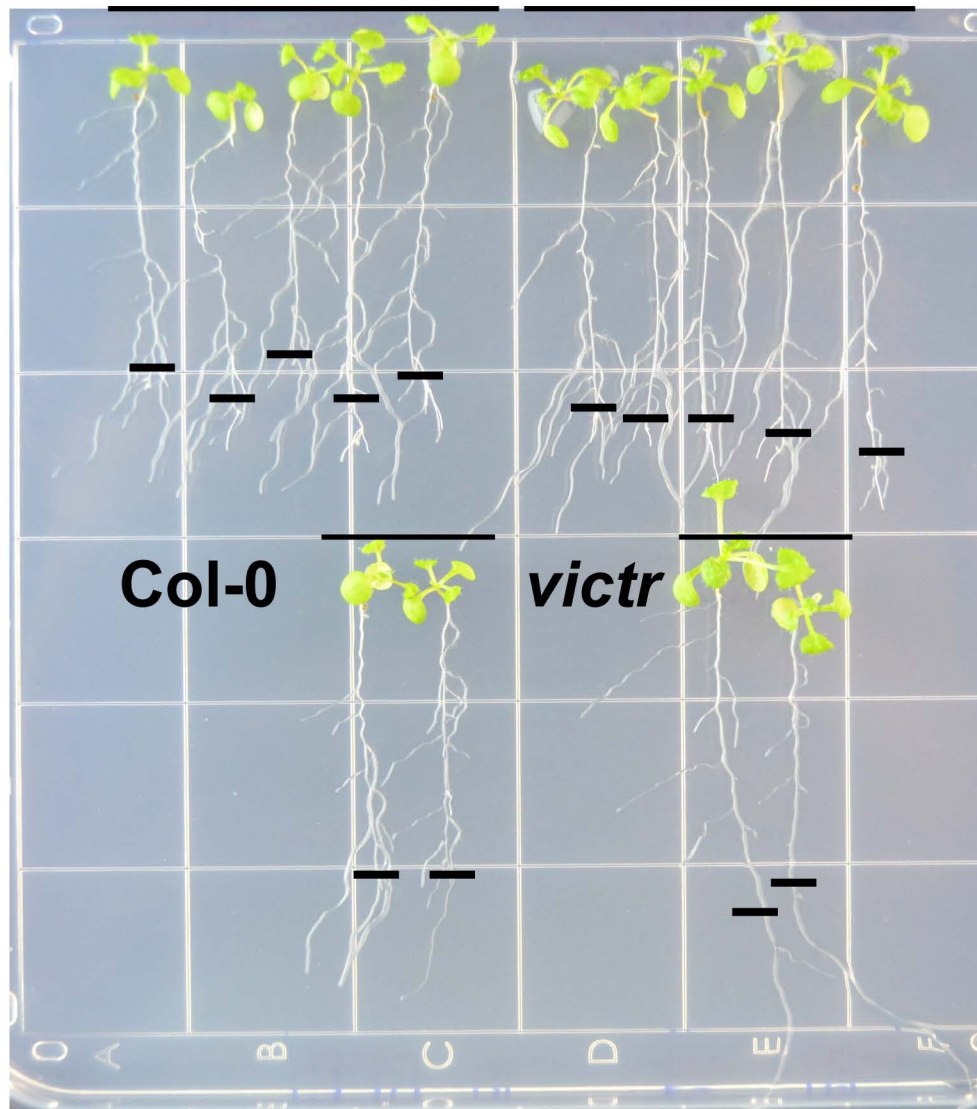


Membrane blot



rda2-1

rda2-2



Col-0

victr