

Supporting Information

Long-term variations in PM_{2.5} concentrations under changing meteorological conditions in Taiwan

Fang-Yi Cheng and Chia-Hua Hsu

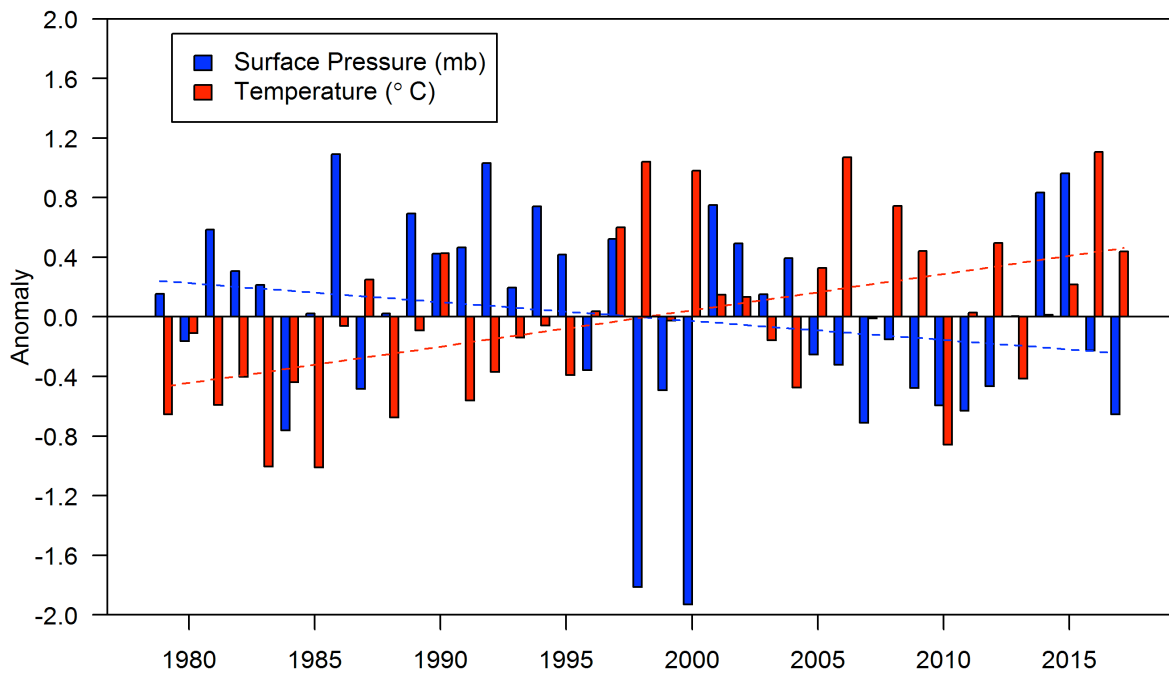


Fig. S1. Long-term variation (1979–2017) of the observed surface temperature and pressure averaged from the surface CWB weather stations in Taiwan.

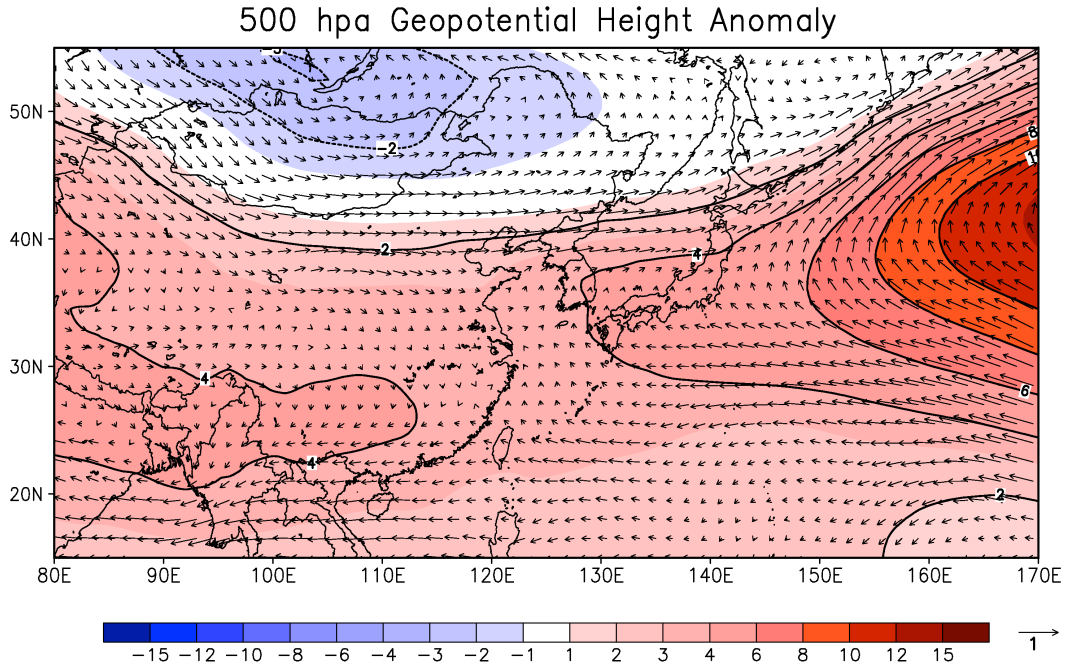


Fig. S2. Distribution of the 500-hPa geopotential height anomaly (m). Shaded colors and wind vectors represent the anomaly of the geopotential height and wind (m s^{-1}) from 1997 to 2017 relative to the 39-year (1979 to 2017) average.