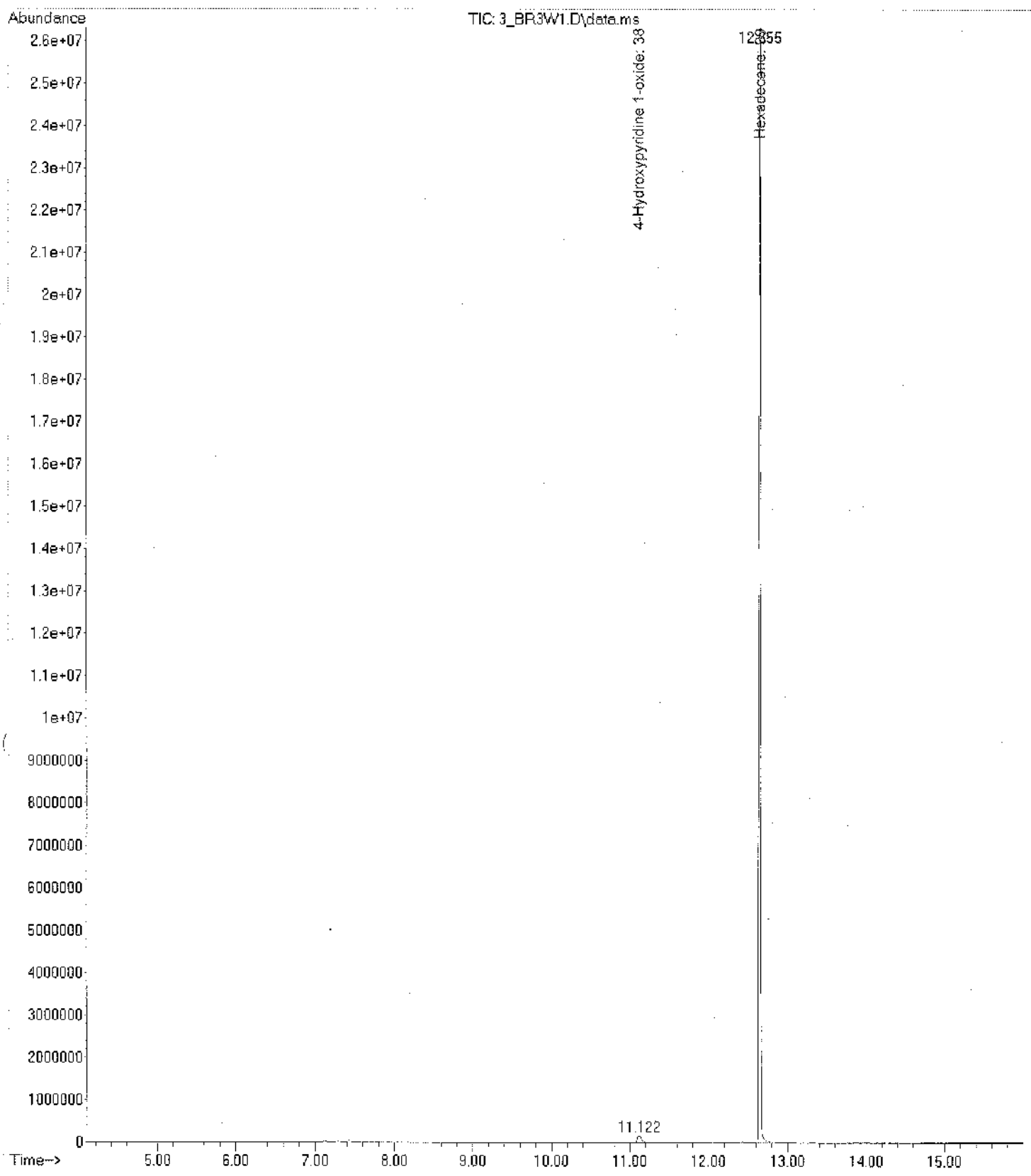


File : C:\msdchem\1\data\Madushika\3_BR3W1.D
Operator :
Acquired : 10 Jun 2016 12:50 using AcqMethod MADUSHIKA.M
Instrument : UOSJP GCMSD
Sample Name : 3_BR3W1
Misc Info : ERR
Vial Number : 3



Area Percent Report

Data Path : C:\msdchem\1\data\Madushika\
 Data File : 3_BR3W1.D
 Acq On : 10 Jun 2016 12:50
 Operator :
 Sample : 3_BR3W1
 Misc :
 ALS Vial : 3 Sample Multiplier: 1

Integration Parameters: autoint1.e
 Integrator: ChemStation

Method : C:\msdchem\1\methods\Calibration plot_Ace.M
 Title : autoint1.e

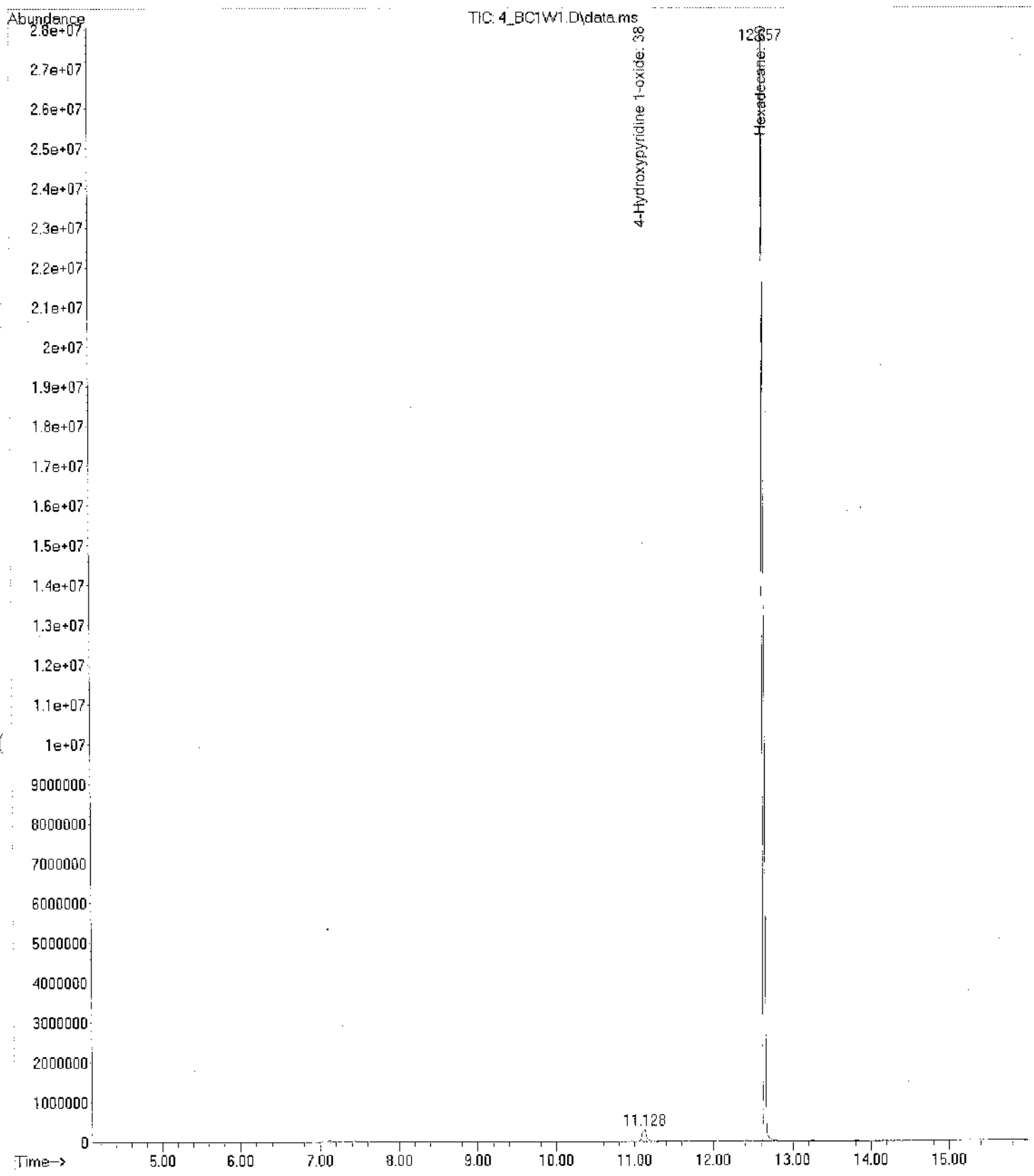
Signal : TIC: 3_BR3W1.D\data.ms

Peak #	R.T. min	first scan	max scan	last scan	PK TY	peak height	corr. area	corr. % max.	% of total
1	11.122	1165	1192	1217	BB 2	140944	5995186	1.65%	1.622%
2	12.655	1406	1451	1483	BB	25829469	363602615	100.00%	98.378%

Sum of corrected areas: 369597801

Calibration plot_Ace.M Mon Jun 13 09:59:50 2016

File : C:\msdchem\1\data\Madushika\4_BC1W1.D
Operator :
Acquired : 10 Jun 2016 13:11 using AcqMethod MADUSHIKA.M
Instrument : UOSJP GCMSD
Sample Name: 4_BC1W1
Misc Info : ERR
Vial Number: 4



Area Percent Report

Data Path : C:\msdchem\1\data\Madushika\
 Data File : 4_BC1W1.D
 Acq On : 10 Jun 2016 13:11
 Operator :
 Sample : 4_BC1W1
 Misc :
 ALS Vial : 4 Sample Multiplier: 1

Integration Parameters: autoint1.e
 Integrator: ChemStation

Method : C:\msdchem\1\methods\Calibration plot_Ace.M
 Title : autoint1.e

Signal : TIC: 4_BC1W1.D\data.ms

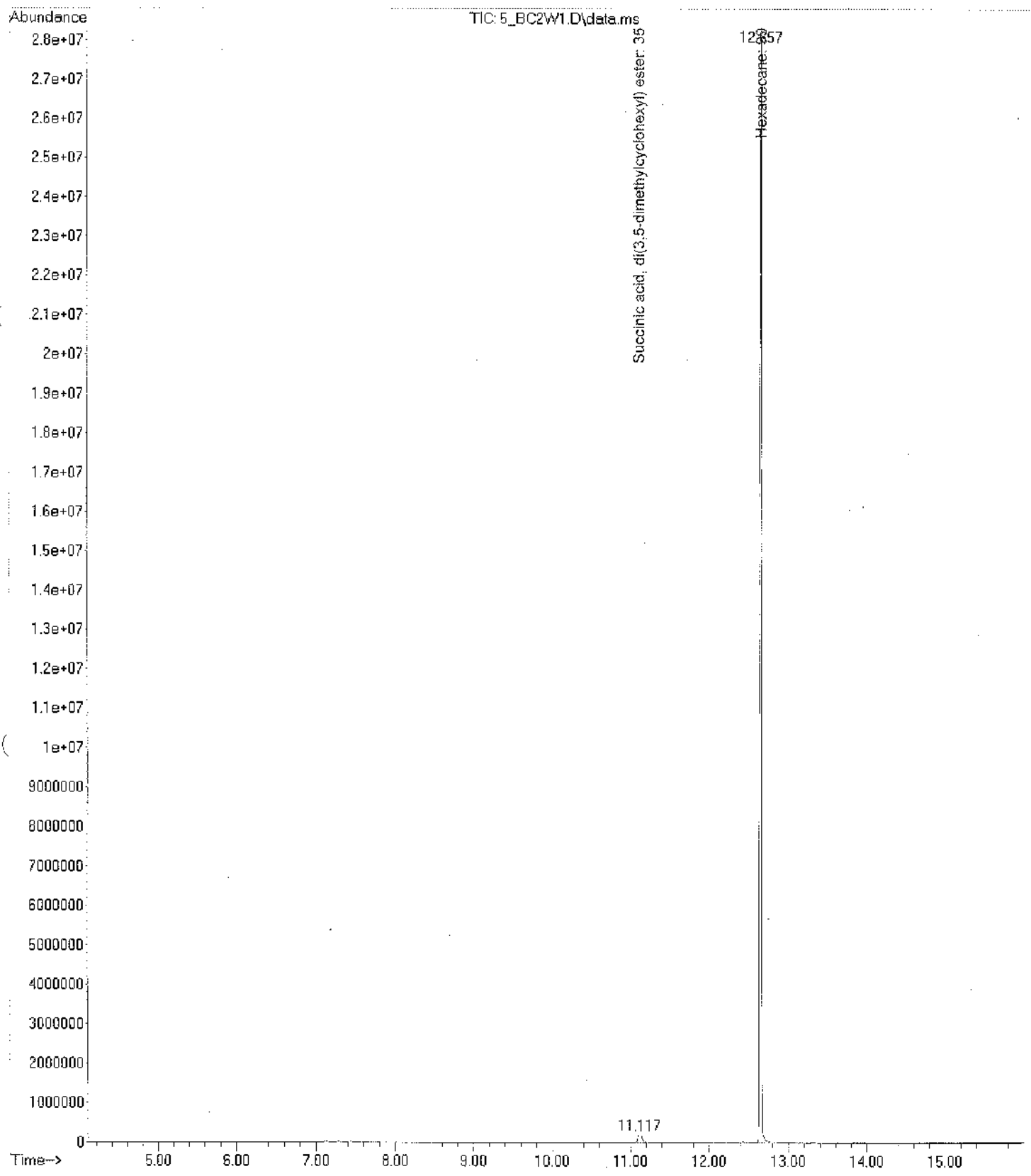
Peak #	R.T. min	first scan	max scan	last scan	PK TY	peak height	corr. area	corr. % max.	% of total
1	11.128	1165	1193	1220	BB	276851	10738763	2.70%	2.626%
2	12.657	1406	1452	1484	BB	26653306	398233417	100.00%	97.374%

Sum of corrected areas: 408972180

Calibration plot_Ace.M Mon Jun 13 10:01:06 2016

MMI Bae Control

File : C:\msdchem\1\data\Madushika\5_BC2W1.D
Operator :
Acquired : 10 Jun 2016 13:32 using AcqMethod MADUSHIKA.M
Instrument : UOSJP GCMSD
Sample Name : 5_BC2W1
Misc Info : ERR
Vial Number : 5



Area Percent Report

Data Path : C:\msdchem\1\data\Madushika\
 Data File : 5_BC2W1.D
 Acq On : 10 Jun 2016 13:32
 Operator :
 Sample : 5_BC2W1
 Misc :
 ALS Vial : 5 Sample Multiplier: 1

Integration Parameters: autoint1.e
 Integrator: ChemStation

Method : C:\msdchem\1\methods\Calibration plot_Ace.M
 Title : autoint1.e

Signal : TIC: 5_BC2W1.D\data.ms

Peak #	R.T. min	first scan	max scan	last scan	PK TY	peak height	corr. area	corr. % max.	% of total
1	11.117	1165	1191	1217	BB	192504	8276993	2.01%	1.970%
2	12.657	1405	1452	1484	BB	26848778	411770923	100.00%	98.030%

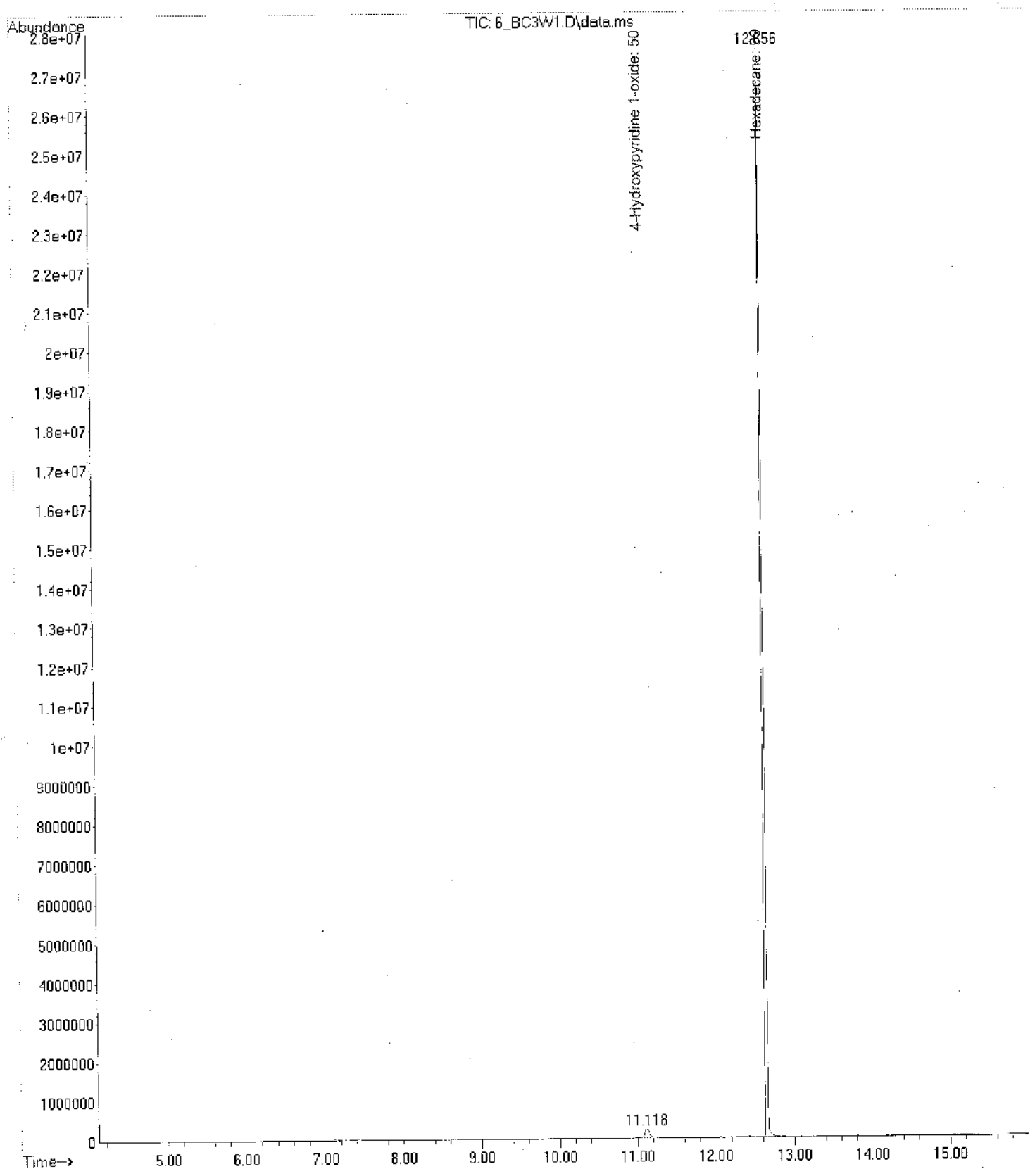
Sum of corrected areas: 420047916

Calibration plot_Ace.M Mon Jun 13 10:02:24 2016

MM1 Bac Control after
2 weeks

File : C:\msdchem\1\data\Madushika\6_BC3W1.D
Operator :
Acquired : 10 Jun 2016 13:53 using AcqMethod MADUSHIKA.M
Instrument : UOSJP GCMSD
Sample Name : 6_BC3W1
Misc Info : ERR
Vial Number : 6

BC3W1



Area Percent Report

Data Path : C:\msdchem\1\data\Madushika\
 Data File : 6_BC3W1.D
 Acq On : 10 Jun 2016 13:53
 Operator :
 Sample : 6_BC3W1
 Misc :
 ALS Vial : 6 Sample Multiplier: 1

Integration Parameters: autoint1.e
 Integrator: ChemStation

Method : C:\msdchem\1\methods\Calibration plot_Ace.M
 Title : autoint1.e

Signal : TIC: 6_BC3W1.D\data.ms

peak #	R.T. min	first scan	max scan	last scan	PK TY	peak height	corr. area	corr. % max.	% of total
1	11.118	1164	1191	1216	BB 2	212590	8656772	2.33%	2.280%
2	12.656	1406	1452	1482	BB	26477338	370955490	100.00%	97.720%

Sum of corrected areas: 379612262

Calibration plot_Ace.M Mon Jun 13 10:03:25 2016