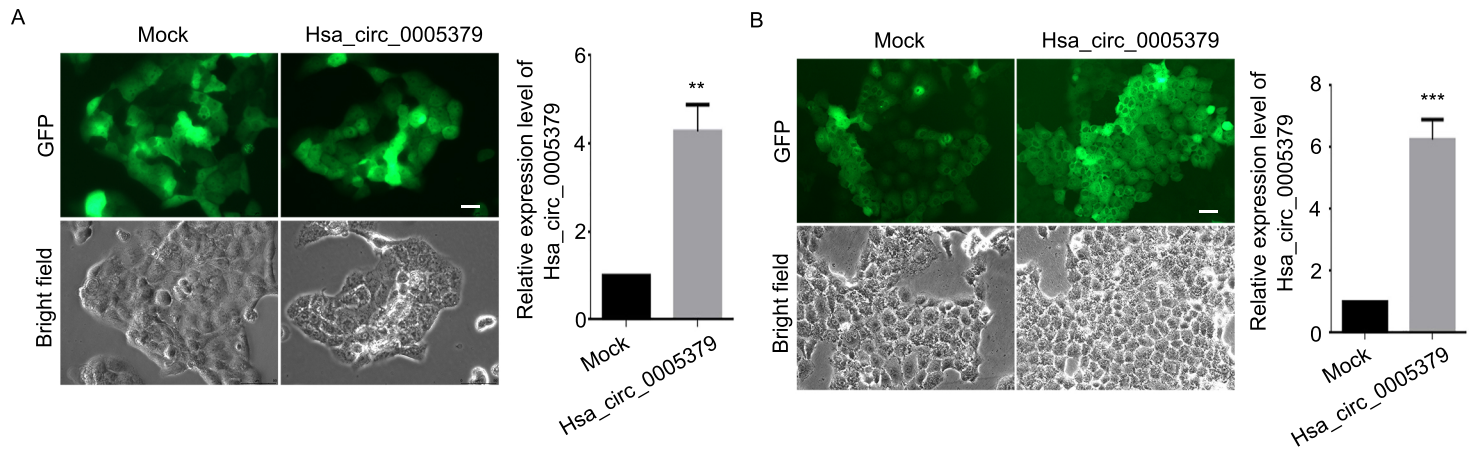


Supplementary Figure 1

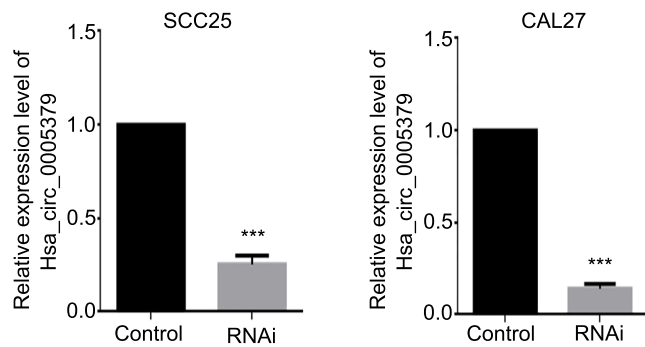


Supplementary Figure 1. Generation of SCC25 and CaL27 stable cell lines.

(A, B) GFP expression was examined under a fluorescence microscope. Hsa\_circ\_0005379 expression level in stable SCC25 (A) and CAL27 (B) cell lines was quantified using qRT-PCR.

Data are presented as means  $\pm$  SEM of three independent experiments. Student's t-test, \*\*P < 0.01, \*\*\*P < 0.001. Scale bar, 20  $\mu$ m.

Supplementary Figure 2

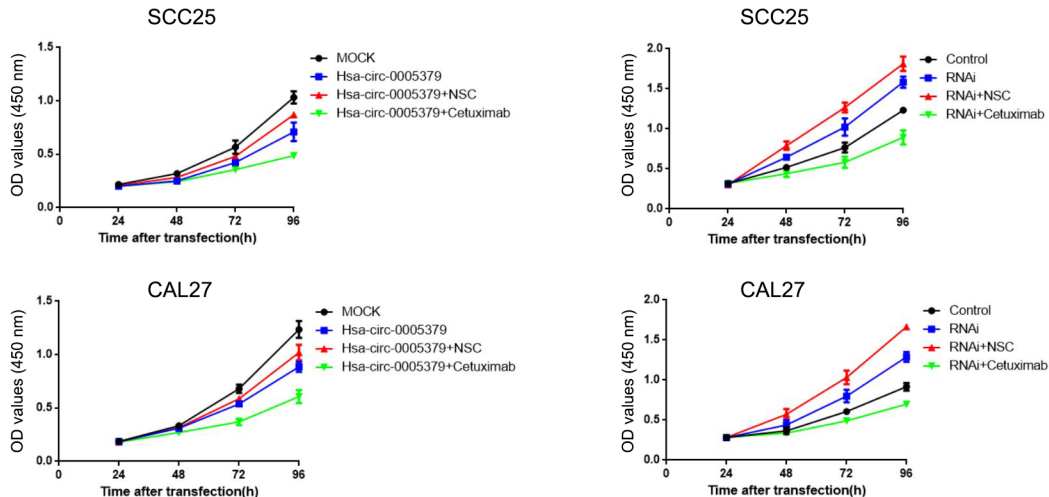


Supplementary Figure 2. The knockdown efficiency of siRNA against hsa\_circ\_0005379.

The knockdown efficiency of hsa\_circ\_0005379 levels in SCC25 and CAL27 cells after siRNA knockdown was quantified by qRT-PCR.

Data are presented as means  $\pm$  SEM of three independent experiments. Student's t-test, \*\*\*P < 0.001.

Figure S3



**Figure S3. Up- or downregulation of hsa\_circ\_0005379 affects cell proliferation.**

SCC25 and CAL27 cells were overexpressing or knockdown hsa\_circ\_0005379 and treated with EGFR inhibitor cetuximab or agonist NSC. The CCK-8 assay was used to measure cell proliferation at different times.

Data are presented as means  $\pm$  SEM of three independent experiments. Student's *t*-test.