

# RehabWeek 2017 - Survey on sensorimotor assessments

This is a fully anonymized questionnaire and your email will only be collected if you provide it at the end of the survey.

\* Required

## We need your opinion on how to advance technology-aided assessments

---

It is often said that "technology-aided assessments can provide more objective, sensitive and reliable measurements than traditional clinical scales". However, a significant amount of resources (time, money, man power) is often spent in developing tools that are rarely used in everyday clinical practice.

This survey is intended for all stakeholders in the field of neurorehabilitation (clinicians, therapists, engineers, manufacturers, patients, etc.), to help the community understand each point of view, align efforts, and close the gap between research and everyday clinical practice - specifically in regards to technology-aided sensorimotor assessments.

Thank you for participating in this survey!

After RehabWeek 2017, we will publish the results of this survey. We hope you find this valuable to guide your efforts!

## Get familiar with our definitions

The following image illustrates what we mean by 'standard clinical scales' and 'technology-aided assessments'.

### Examples of

(\* these are not exhaustive lists)

#### Standard clinical assessments



Box & blocks test



Two-point discrimination



Fugl-Meyer

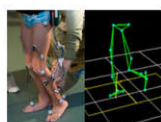


Disabilities of the Arm, Shoulder, and Hand Questionnaire

#### Technology-aided assessments



Virtual setups that resemble clinical assessments



Advanced movement analysis



Analysis of brain activity related to specific movements or sensory stimuli



Analysis of reflexes and muscle properties



Scores from robotic tasks



Analysis of data from activity trackers

## Tell us about you

**1. What is your gender? \***

*Mark only one oval.*

- Male
- Female
- Prefer not to say

2. What country do you live/work in? \*

Mark only one oval.

- Afghanistan
- Albania
- Algeria
- Andorra
- Angola
- Antigua and Barbuda
- Argentina
- Armenia
- Aruba
- Australia
- Austria
- Azerbaijan
- Bahamas, The
- Bahrain
- Bangladesh
- Barbados
- Belarus
- Belgium
- Belize
- Benin
- Bhutan
- Bolivia
- Bosnia and Herzegovina
- Botswana
- Brazil
- Brunei
- Bulgaria
- Burkina Faso
- Burma
- Burundi
- Cambodia
- Cameroon
- Canada
- Cabo Verde
- Central African Republic
- Chad
- Chile
- China
- Colombia
- Comoros
- Congo, Democratic Republic of the
- Congo, Republic of the
- Costa Rica
- Cote d'Ivoire
- Croatia
- Cuba
- Curacao
- Cyprus
- Czechia
- Denmark
- Djibouti
- Dominica
- Dominican Republic
- East Timor
- Ecuador

- Egypt
- El Salvador
- Equatorial Guinea
- Eritrea
- Estonia
- Ethiopia
- Fiji
- Finland
- France
- Gabon
- Gambia, The
- Georgia
- Germany
- Ghana
- Greece
- Grenada
- Guatemala
- Guinea
- Guinea-Bissau
- Guyana
- Haiti
- Holy See
- Honduras
- Hong Kong
- Hungary
- Iceland
- India
- Indonesia
- Iran
- Iraq
- Ireland
- Israel
- Italy
- Jamaica
- Japan
- Jordan
- Kazakhstan
- Kenya
- Kiribati
- Korea, North
- Korea, South
- Kosovo
- Kuwait
- Kyrgyzstan
- Laos
- Latvia
- Lebanon
- Lesotho
- Liberia
- Libya
- Liechtenstein
- Lithuania
- Luxembourg
- Macau
- Macedonia
- Madagascar
- Malawi

- Malaysia
- Maldives
- Mali
- Malta
- Marshall Islands
- Mauritania
- Mauritius
- Mexico
- Micronesia
- Moldova
- Monaco
- Mongolia
- Montenegro
- Morocco
- Mozambique
- Namibia
- Nauru
- Nepal
- Netherlands
- New Zealand
- Nicaragua
- Niger
- Nigeria
- North Korea
- Norway
- Oman
- Pakistan
- Palau
- Palestinian Territories
- Panama
- Papua New Guinea
- Paraguay
- Peru
- Philippines
- Poland
- Portugal
- Qatar
- Romania
- Russia
- Rwanda
- Saint Kitts and Nevis
- Saint Lucia
- Saint Vincent and the Grenadines
- Samoa
- San Marino
- Sao Tome and Principe
- Saudi Arabia
- Senegal
- Serbia
- Seychelles
- Sierra Leone
- Singapore
- Sint Maarten
- Slovakia
- Slovenia
- Solomon Islands
- Somalia

- South Africa
- South Korea
- South Sudan
- Spain
- Sri Lanka
- Sudan
- Suriname
- Swaziland
- Sweden
- Switzerland
- Syria
- Taiwan
- Tajikistan
- Tanzania
- Thailand
- Timor-Leste
- Togo
- Tonga
- Trinidad and Tobago
- Tunisia
- Turkey
- Turkmenistan
- Tuvalu
- Uganda
- Ukraine
- United Arab Emirates
- United Kingdom
- Uruguay
- Uzbekistan
- Vanuatu
- Venezuela
- Vietnam
- Yemen
- Zambia
- Zimbabwe

**3. Do you currently receive therapy due to a neuromuscular disorder? \***

*Mark only one oval.*

- Yes *Skip to question 17.*
- No *Skip to question 4.*

## Tell us about you

**4. How many years of professional experience do you have in the field of rehabilitation?\***

*\* Including: clinical work, research, technology development, sales, policy making, etc.*

*Mark only one oval.*

- < 1 Year
- 1 to 5 Years
- 6 to 10 Years
- > 10 Years

**5. What kind of exposure have you had with technology-aided assessments? \***

*Check all that apply.*

- I have developed technology
- I have used technology
- I have observed technology being used
- I have no experience
- Other: \_\_\_\_\_

**6. What is your profession? \***

If you have more than one profession, select the one you most identify with. If you are a student, select your field of study.  
 Mark only one oval.

- Therapist (research-focused) *Skip to question 7.*
- Therapist (clinic-focused) *Skip to question 7.*
- Medical doctor *Skip to question 7.*
- Hospital / clinic administrator *Skip to question 29.*
- Engineer (academic or non-profit institution research) *Skip to question 13.*
- Engineer (medical industry) *Skip to question 13.*
- Neuroscientist *Skip to question 24.*
- Manager (medical industry) *Skip to question 32.*
- Other (medical industry) *Skip to question 32.*
- Sales representative of medical technologies *Skip to question 32.*
- Policy maker (e.g., work for a government organization) *Skip to question 37.*
- Insurance representative *Skip to question 37.*
- Other: \_\_\_\_\_ *Skip to question 37.*

**Tell us about your experience [Clinician]**

**7. What kind of unit do you work in? \***

If you work in more than one, select the place where you spend most of your time.  
 Mark only one oval.

- Acute-care unit
- Inpatient unit ("small", < 50 beds)
- Inpatient unit ("large", > 50 beds)
- Outpatient unit ("small", < 50 patients)
- Outpatient unit ("large", > 50 patients)
- Skilled nursing facility
- Home care
- Other: \_\_\_\_\_

**8. How often are these technologies used in your work (not restricted to assessments)? \***

Mark only one oval per row.

	Never	Very rarely / only in select cases	At least once a month	At least once a week	Everyday
Robotic devices (i.e., with motors)	<input type="radio"/>	<input type="radio"/>	<input type="radio"/>	<input type="radio"/>	<input type="radio"/>
Motion sensors (e.g., IMUs, activity trackers, electrogoniometers, cameras)	<input type="radio"/>	<input type="radio"/>	<input type="radio"/>	<input type="radio"/>	<input type="radio"/>
Devices to measure brain activity (e.g., EEG, MRI scanners)	<input type="radio"/>	<input type="radio"/>	<input type="radio"/>	<input type="radio"/>	<input type="radio"/>
Devices to measure muscle activity (e.g., EMG)	<input type="radio"/>	<input type="radio"/>	<input type="radio"/>	<input type="radio"/>	<input type="radio"/>
Virtual reality / gaming environments (e.g., Nintendo Wii)	<input type="radio"/>	<input type="radio"/>	<input type="radio"/>	<input type="radio"/>	<input type="radio"/>
Force/pressure sensors (e.g., dynamometers, force plates, pressure insoles)	<input type="radio"/>	<input type="radio"/>	<input type="radio"/>	<input type="radio"/>	<input type="radio"/>
Non-robotic devices with sensors (e.g., ergometers)	<input type="radio"/>	<input type="radio"/>	<input type="radio"/>	<input type="radio"/>	<input type="radio"/>

**9. How do you assess the sensorimotor ability of your patients? \***

Rank the following options in your order of preference.  
Mark only one oval per row.

	1: Least preferred	2	3	4	5	6	7: Most preferred
Standard clinical assessments (scales or questionnaires)	<input type="radio"/>	<input type="radio"/>	<input type="radio"/>	<input type="radio"/>	<input type="radio"/>	<input type="radio"/>	<input type="radio"/>
Low-tech measurement tools (e.g., goniometer)	<input type="radio"/>	<input type="radio"/>	<input type="radio"/>	<input type="radio"/>	<input type="radio"/>	<input type="radio"/>	<input type="radio"/>
Verbal communication	<input type="radio"/>	<input type="radio"/>	<input type="radio"/>	<input type="radio"/>	<input type="radio"/>	<input type="radio"/>	<input type="radio"/>
Visual inspection / observation	<input type="radio"/>	<input type="radio"/>	<input type="radio"/>	<input type="radio"/>	<input type="radio"/>	<input type="radio"/>	<input type="radio"/>
Using technology	<input type="radio"/>	<input type="radio"/>	<input type="radio"/>	<input type="radio"/>	<input type="radio"/>	<input type="radio"/>	<input type="radio"/>
Physical manipulation	<input type="radio"/>	<input type="radio"/>	<input type="radio"/>	<input type="radio"/>	<input type="radio"/>	<input type="radio"/>	<input type="radio"/>
Non-standardized tasks or questionnaires	<input type="radio"/>	<input type="radio"/>	<input type="radio"/>	<input type="radio"/>	<input type="radio"/>	<input type="radio"/>	<input type="radio"/>

**10. How often do you (or your personnel) perform standard clinical assessments on a given patient during routine clinical practice? \***

Mark only one oval.

- Never
- Very rarely / only in select cases
- Only during entry and/or discharge
- At least one a month
- At least once a week

**11. How often do you (or your personnel) use any kind of technology to perform assessments on a given patient during routine clinical practice? \***

Mark only one oval.

- Never
- Very rarely / only in select cases
- Only during entry and/or discharge
- At least one a month
- At least once a week

**12. In your work, what kind of interactions have you had with technology developers? \***

Mark only one oval per row.

	Never	1 case	2-5 different cases	>5 different cases
Direct interaction for technology development	<input type="radio"/>	<input type="radio"/>	<input type="radio"/>	<input type="radio"/>
Direct interaction for clinical validation of technology-aided assessments	<input type="radio"/>	<input type="radio"/>	<input type="radio"/>	<input type="radio"/>

Skip to question 37.

**Tell us about your experience [Engineer]**

**13. How often are these technologies used in your work environment? \***

Mark only one oval per row.

	Never	Very rarely / only in select cases	At least once a month	At least once a week	Everyday
Devices to measure muscle activity (e.g., EMG)	<input type="radio"/>	<input type="radio"/>	<input type="radio"/>	<input type="radio"/>	<input type="radio"/>
Robotic devices (i.e., with motors)	<input type="radio"/>	<input type="radio"/>	<input type="radio"/>	<input type="radio"/>	<input type="radio"/>
Non-robotic devices with sensors (e.g., ergometers)	<input type="radio"/>	<input type="radio"/>	<input type="radio"/>	<input type="radio"/>	<input type="radio"/>
Force/pressure sensors (e.g., dynamometers, force plates, pressure insdes)	<input type="radio"/>	<input type="radio"/>	<input type="radio"/>	<input type="radio"/>	<input type="radio"/>
Virtual reality / gaming environments (e.g., Nintendo Wii)	<input type="radio"/>	<input type="radio"/>	<input type="radio"/>	<input type="radio"/>	<input type="radio"/>
Devices to measure brain activity (e.g., EEG, MRI scanners)	<input type="radio"/>	<input type="radio"/>	<input type="radio"/>	<input type="radio"/>	<input type="radio"/>
Motion sensors (e.g., IMUs, activity trackers, electrogoniometers, cameras)	<input type="radio"/>	<input type="radio"/>	<input type="radio"/>	<input type="radio"/>	<input type="radio"/>



**14. In your work, what kind of interactions have you had with patients? \***

Mark only one oval per row.

	Never	1-5 patients	5-10 patients	>10 patients
Observed during therapy sessions	<input type="radio"/>	<input type="radio"/>	<input type="radio"/>	<input type="radio"/>
Direct interaction for technology development	<input type="radio"/>	<input type="radio"/>	<input type="radio"/>	<input type="radio"/>
Direct interaction through clinical studies	<input type="radio"/>	<input type="radio"/>	<input type="radio"/>	<input type="radio"/>

**15. In your work, what kind of interactions have you had with therapists? \***

Mark only one oval per row.

	Never	1-5 therapists	5-10 therapists	>10 therapists
Observed during therapy sessions	<input type="radio"/>	<input type="radio"/>	<input type="radio"/>	<input type="radio"/>
Direct interaction through clinical studies	<input type="radio"/>	<input type="radio"/>	<input type="radio"/>	<input type="radio"/>
Direct interaction for technology development	<input type="radio"/>	<input type="radio"/>	<input type="radio"/>	<input type="radio"/>

**16. How often do you think therapists perform standard clinical assessments on a given patient during routine clinical practice? \***

Mark only one oval.

- Never
- Very rarely / only in select cases
- Only during entry and/or discharge
- At least one a month
- At least once a week

Skip to question 37.

## Tell us about your experience [Patient]

**17. In what kind of unit are you being treated? \***

Mark only one oval.

- Acute-care unit
- Inpatient unit ("small", < 50 beds)
- Inpatient unit ("large", > 50 beds)
- Outpatient unit ("small", < 50 patients)
- Outpatient unit ("large", > 50 patients)
- Skilled nursing facility
- Home care
- Other: \_\_\_\_\_

**18. How often do you do clinical assessments during your therapy sessions? \***

Mark only one oval.

- Never
- Very rarely /only in select cases
- Only during entry and/or discharge
- At least one a month
- At least once a week

**19. How often do your therapists use technological tools to assess you during therapy sessions? \***

Mark only one oval.

- Never
- Very rarely / only in select cases
- Only during entry and/or discharge
- At least one a month
- At least once a week

**20. Do you see any value in having your abilities assessed by a professional?**

Mark only one oval.

- Yes
- No
- Maybe



**28. How? \***

Please elaborate on your previous answer.

---

---

---

---

---

Skip to question 37.

**Tell us about your experience [Clinical Administrator]**

**29. How often are these technologies used in your work (not restricted to assessments)? \***

Mark only one oval per row.

	Never	Very rarely / only in select cases	At least once a month	At least once a week	Everyday
Virtual reality / gaming environments (e.g., Nintendo Wii)	<input type="radio"/>	<input type="radio"/>	<input type="radio"/>	<input type="radio"/>	<input type="radio"/>
Robotic devices (i.e. with motors)	<input type="radio"/>	<input type="radio"/>	<input type="radio"/>	<input type="radio"/>	<input type="radio"/>
Force/presure sensors (e.g. dynamometers, force plates, pressure insoles)	<input type="radio"/>	<input type="radio"/>	<input type="radio"/>	<input type="radio"/>	<input type="radio"/>
Motion sensors (e.g. IMUs, activity trackers, electrogoniometers, cameras)	<input type="radio"/>	<input type="radio"/>	<input type="radio"/>	<input type="radio"/>	<input type="radio"/>
Devices to measure muscle activity (e.g. EMG)	<input type="radio"/>	<input type="radio"/>	<input type="radio"/>	<input type="radio"/>	<input type="radio"/>
Devices to measure brain activity (e.g. EEG, MRI scanners)	<input type="radio"/>	<input type="radio"/>	<input type="radio"/>	<input type="radio"/>	<input type="radio"/>
Non-robotic devices with sensors (e.g. ergometers)	<input type="radio"/>	<input type="radio"/>	<input type="radio"/>	<input type="radio"/>	<input type="radio"/>

**30. How often are these technologies used in your work (for assessments only)? \***

Mark only one oval per row.

	Never	Very rarely / only in select cases	At least once a month	At least once a week	Everyday
Devices to measure muscle activity (e.g. EMG)	<input type="radio"/>	<input type="radio"/>	<input type="radio"/>	<input type="radio"/>	<input type="radio"/>
Robotic devices (i.e. with motors)	<input type="radio"/>	<input type="radio"/>	<input type="radio"/>	<input type="radio"/>	<input type="radio"/>
Devices to measure brain activity (e.g. EEG, MRI scanners)	<input type="radio"/>	<input type="radio"/>	<input type="radio"/>	<input type="radio"/>	<input type="radio"/>
Motion sensors (e.g. IMUs, activity trackers, electrogoniometers, cameras)	<input type="radio"/>	<input type="radio"/>	<input type="radio"/>	<input type="radio"/>	<input type="radio"/>
Force/presure sensors (e.g. dynamometers, force plates, pressure insoles)	<input type="radio"/>	<input type="radio"/>	<input type="radio"/>	<input type="radio"/>	<input type="radio"/>
Virtual reality / gaming environments (e.g., Nintendo Wii)	<input type="radio"/>	<input type="radio"/>	<input type="radio"/>	<input type="radio"/>	<input type="radio"/>
Non-robotic devices with sensors (e.g. ergometers)	<input type="radio"/>	<input type="radio"/>	<input type="radio"/>	<input type="radio"/>	<input type="radio"/>

**31. How often does your personnel perform standard clinical assessments on a given patient during routine clinical practice? \***

Mark only one oval.

- Never
- Very rarely /only in select cases
- Only during entry and/or discharge
- At least one a month
- At least once a week

Skip to question 37.

## Tell us about your experience [Medical industry]

### 32. What kind of technologies do you provide? \*

Check all that apply.

- Motion sensors (e.g., IMUs, activity trackers, electrogoniometers, cameras)
- Devices to measure muscle activity (e.g., EMG)
- Devices to measure brain activity (e.g., EEG, MRI scanners)
- Virtual reality /gaming environments
- Robotic devices (i.e., with motors)
- Non-robotic devices with sensors (e.g., ergometers)
- Force/presure sensors (e.g., dynamometers, force plates, pressure insoles)
- Other: \_\_\_\_\_

### 33. What is the current interest in assessment tools? \*

Mark only one oval per row.

	I do not know	0: No interest	1	2	3	4	5: Everyone shows interest
From regulatory bodies	<input type="radio"/>	<input type="radio"/>	<input type="radio"/>	<input type="radio"/>	<input type="radio"/>	<input type="radio"/>	<input type="radio"/>
From therapists	<input type="radio"/>	<input type="radio"/>	<input type="radio"/>	<input type="radio"/>	<input type="radio"/>	<input type="radio"/>	<input type="radio"/>
From medical doctors	<input type="radio"/>	<input type="radio"/>	<input type="radio"/>	<input type="radio"/>	<input type="radio"/>	<input type="radio"/>	<input type="radio"/>
From hospital administrators	<input type="radio"/>	<input type="radio"/>	<input type="radio"/>	<input type="radio"/>	<input type="radio"/>	<input type="radio"/>	<input type="radio"/>
From insurance companies	<input type="radio"/>	<input type="radio"/>	<input type="radio"/>	<input type="radio"/>	<input type="radio"/>	<input type="radio"/>	<input type="radio"/>
From researchers	<input type="radio"/>	<input type="radio"/>	<input type="radio"/>	<input type="radio"/>	<input type="radio"/>	<input type="radio"/>	<input type="radio"/>
From patients	<input type="radio"/>	<input type="radio"/>	<input type="radio"/>	<input type="radio"/>	<input type="radio"/>	<input type="radio"/>	<input type="radio"/>

### 34. How much resource (time, money, personnel, etc.) do you allocate on developing (if you are a producer) or on highlighting (if you are a distributor) assessment capabilities of the devices you provide? \*

Mark only one oval per row.

	0: Zero resources	1	2: Same	3	4: Double	5: More than double	I only produce / sell assessment devices
Relative to resources spent in therapeutic capabilities	<input type="radio"/>	<input type="radio"/>	<input type="radio"/>	<input type="radio"/>	<input type="radio"/>	<input type="radio"/>	<input type="radio"/>

### 35. How much of a selling point are the assessment capabilities of a device? \*

Mark only one oval.

	1	2	3	4	5
Do not make any difference	<input type="radio"/>	<input type="radio"/>	<input type="radio"/>	<input type="radio"/>	<input type="radio"/>
Determining factor	<input type="radio"/>	<input type="radio"/>	<input type="radio"/>	<input type="radio"/>	<input type="radio"/>

### 36. Do you foresee any changes in market demand for assessment tools in the coming years? \*

Mark only one oval.

- Yes, I foresee an INCREASE in demand
- Yes, I foresee a DECREASE in demand
- No

## Tell us your opinion [general]

### 37. What is a reasonable amount of time for a sensorimotor assessment that has to be performed at least once a week (per patient) - from beginning of setup to end of undoing setup?

Mark only one oval.

- Less than 1 minute
- 1-5 minutes
- 6-15 minutes
- 16-30 minutes
- 31-60 minutes
- More than 60 minutes

**38. What are the main motivators to perform and document results from routine assessments (standard clinical or technology-aided)? \***

While multiple levels may be equally important, please rank the options.

**Individual level**

- Understand function, impairment, etc. of a specific patient
- Individual treatment planning
- Individualized evaluation of treatment / intervention
- Communication among medical team to discuss individual case

**Institutional level**

- Resource planning (e.g. allocation of therapist to different patients)
- Indicators of quality assurance inside the clinic / hospital
- Evaluation of services that are provided by the clinic / hospital
- Evaluation of health care delivery models

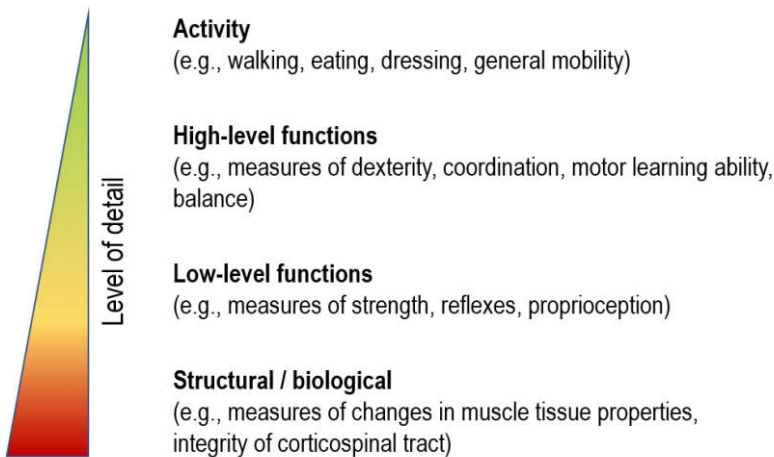
**Social level**

- Eligibility criteria for social security benefits, disability pensions, insurance, etc.
- Development of guidelines, legislations, policies
- Understand needs of different persons with various levels of disability

Mark only one oval per row.

	1: Least important	2	3: Most important
Institutional level reasons	<input type="radio"/>	<input type="radio"/>	<input type="radio"/>
Individual level reasons	<input type="radio"/>	<input type="radio"/>	<input type="radio"/>
Social level reasons	<input type="radio"/>	<input type="radio"/>	<input type="radio"/>

**39. In your opinion, which is the minimum level of detail needed in the quantification of sensorimotor problems for the following objectives: \***



Mark only one oval per row.

	Activity (lowest level of detail)	High-level functions	Low-level functions	Structural / biological (highest level of detail)
To determine medications or invasive interventions (e.g., surgery)	<input type="radio"/>	<input type="radio"/>	<input type="radio"/>	<input type="radio"/>
To discuss progress (therapist/clinician with patient)	<input type="radio"/>	<input type="radio"/>	<input type="radio"/>	<input type="radio"/>
To determine physical therapy interventions	<input type="radio"/>	<input type="radio"/>	<input type="radio"/>	<input type="radio"/>
To monitor progress of patients at home	<input type="radio"/>	<input type="radio"/>	<input type="radio"/>	<input type="radio"/>
For patients to monitor their own progress	<input type="radio"/>	<input type="radio"/>	<input type="radio"/>	<input type="radio"/>
To report progress to government bodies / insurance companies	<input type="radio"/>	<input type="radio"/>	<input type="radio"/>	<input type="radio"/>
To discuss patient progress (therapist with clinician)	<input type="radio"/>	<input type="radio"/>	<input type="radio"/>	<input type="radio"/>
To gather evidence of effectiveness of interventions	<input type="radio"/>	<input type="radio"/>	<input type="radio"/>	<input type="radio"/>



**42. What type of activities should we do in the next 5 years to facilitate the use of new technologies and methodologies in clinical practice? \***

Rank in order of importance.  
Mark only one oval per row.

	1: Lowest priority	2	3	4	5: Highest priority
Promotion of cross-disciplinary education and communication	<input type="radio"/>	<input type="radio"/>	<input type="radio"/>	<input type="radio"/>	<input type="radio"/>
Better understand the link between different levels of assessment (i.e., activity, high-level function, low-level function, and structural/biological)	<input type="radio"/>	<input type="radio"/>	<input type="radio"/>	<input type="radio"/>	<input type="radio"/>
Proper definition of taxonomies and terms used in the field	<input type="radio"/>	<input type="radio"/>	<input type="radio"/>	<input type="radio"/>	<input type="radio"/>
Standardization of technology-aided assessments (outcome measures and protocols)	<input type="radio"/>	<input type="radio"/>	<input type="radio"/>	<input type="radio"/>	<input type="radio"/>
Make routine assessment procedures reimbursable or economically feasible	<input type="radio"/>	<input type="radio"/>	<input type="radio"/>	<input type="radio"/>	<input type="radio"/>

## Final questions

**43. Will you be attending RehabWeek 2017? \***

Mark only one oval.

- Yes  
 No

**44. Are there any specific questions you would like us to raise during the expert panel discussion at the workshop "What do we want from technology-aided sensorimotor assessments? –a multi-stakeholder discussion" at RehabWeek 2017?**

---

---

---

---

---

**45. Do you have any further comments?**

---

---

---

---

---

**46. If you would like to be informed of the results of the survey, please enter your email below.**

We only collect your email address if you enter it below.

---